



MULLION MATE®
Adjustable Partition Closure/Series 20

Installation Instructions



PART 1 - STORAGE AND HANDLING

1. After receiving materials, transfer material immediately to a safe, dry, climate-controlled place where it will not be damaged during storage.
 - a. Do not store Gordon, Inc. product or components outdoors.
 - b. Store Crates and / or Cartons flat in a dry location away from activity.
 - c. Do not store near corrosive material such as acids, salt, fertilizer, etc.
 - d. All materials should be protected during site storage to prevent damage to the finished work from other trades.
 - e. Store materials inside a well-insulated area, away from concrete and masonry and protected from the weather, moisture, soiling, abrasion, extreme temperatures and humidity.
 - f. Protect the strippable protective covering on metal panels from exposure to sunlight, heat, and high humidity.
 - g. Store product in Gordon's unopened packaging until installation of product.
 - h. Prevent contact with material that may cause discoloration, staining, or corrosion.
 - i. Store in flat, fully supported position.
 - j. Store to prevent twisting, bending, abrasion, scratching, and denting.
 - k. Do not drop or stand containers on edges or corners.
 - l. Gordon, Inc. components and systems are not packaged to receive the load of any other material stored or stacked upon it. Therefore, **DO NOT DOUBLE STACK OR STORE OTHER MATERIAL** on top of the packages or crates.
2. Inspect all material prior to installation. Do not install any substandard or unacceptable material. Gordon, Inc. will not be responsible for the cost of repair or removal, or costs resulting from removal of rejected material, or the installation of replacement material.
3. Material should be cleaned thoroughly prior to installation.

PART 2 - INSTALLATION

Mullion Mate® Series 20 is designed to be easily field cut and installed to fit varying jobsite conditions. This partition gap enclosure fits between the curtain wall mullion and partition wall, or between a partition wall and perpendicular wall. The Installation Instructions are written for a finished partition wall with Mullion Mate® End Caps installed. (For more information on the End Caps contact a Gordon, Inc. service representative - 800-747-8954).

2.01 - APPLICABLE CODES AND STANDARDS FOR INSTALLATION

1. Project Specifications
2. Architect approved Shop Drawings

2.02 - SPECIAL TOOLS REQUIRED

If field cutting is required:

- Fine tooth saw with a blade recommended for cutting aluminum or metal.
- Wax stick or similar lubricant.
- Painters tape/masking applied tape to prevent scratches or damage to area of cut.
- Tape Measure
- Marker

2.03 - INSTALLATION OF MULLION MATE® SERIES 20 (STEPS 1-4 ARE INSTALLATION INSTRUCTIONS IF FIELD CUTTING IS REQUIRED. IF NOT, START AT STEP 5.)

Step 1:

Use a fine-tooth metal cutting saw blade on a chop saw capable of turning 4,000 rpm. Use a wax stick or similar lubricant on the blade prior to cutting.

Step 2:

To reduce finish damage due to the saw blade, apply masking tape to the Mullion Mate® Series 20 at the approximate location where you are cutting and draw the cut line on the tape.

Step 3:

If spring clip is located at cut location, adjust/move spring to area outside of cut zone. Make the cut and remove the masking tape.

Step 4:

Use optional touch-up kit as needed if the material is painted.

Step 5:

Mullion Mate® Series 20 is shipped with a factory-applied gasket on one side of the component.

Step 6:

Move Mullion Mate® Series 20 to the opening with gasket side facing the partition wall and spring side facing the window mullion. The spring side has a flange leg that will overlap the window mullion.

Note: If installing Mullion Mate® Series 20 between a partition wall and perpendicular wall, the flange leg will overlap the partition wall.

Step 7:

Once Mullion Mate® Series 20 is properly oriented (see Step 6 above), apply pressure directly towards the center of the gap. The spring will flex against the window mullion which applies pressure to compress the gasket against the partition wall. Continue to

apply pressure across the part (top-to-bottom or bottom-to-top) until Mullion Mate® Series 20 is fully installed with flanges touching outside walls of the window mullion.

Step 8:

When installing Mullion Mate® Series 20 at a partition wall that separates two rooms, you will need to install Mullion Mate® Series 20 to both sides of the window mullion or partition wall. Follow Steps 6 and 7 above for the second side of the wall. Note: Ensure that springs on second Mullion Mate® Series 20 are staggered (not at same location) from that of the first Mullion Mate® Series 20 installed to ensure no interference between pairs.

2.04 - FIELD NOTCHING MULLION MATE® SERIES 20 (IF NEEDED)

Step 1:

To reduce finish damage due to the saw blade, apply masking tape to the Mullion Mate® Series 20 at the approximate location where you are cutting the notch and draw the cut line on the tape.

Step 2:

If spring clip is located at notch location, adjust/move spring to area outside of cut zone.

Step 3:

Use a jig saw with a fine tooth blade for cutting metal. Make the notch following the layout lines. A relief cut or several relief cuts will be required for the vertical cut (arching the blade path to the straight layout line before making the straight cut).

Step 4:

Remove masking tape after notch is cut.

Step 5:

Use optional touch-up kit as needed if the material is painted.

PART 3 – ILLUSTRATIONS

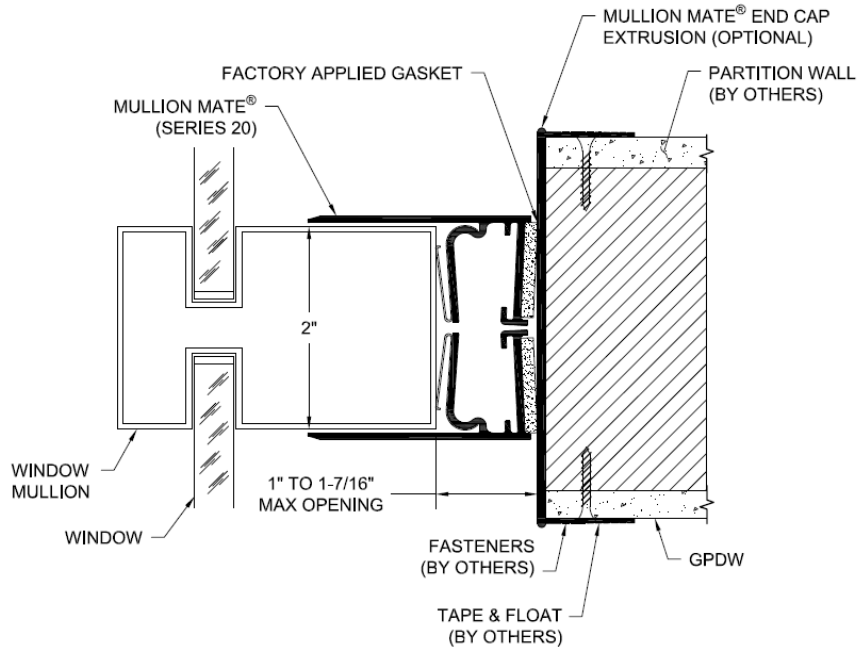


Figure A: Mullion Mate® Series 20 --- MM 1 Section

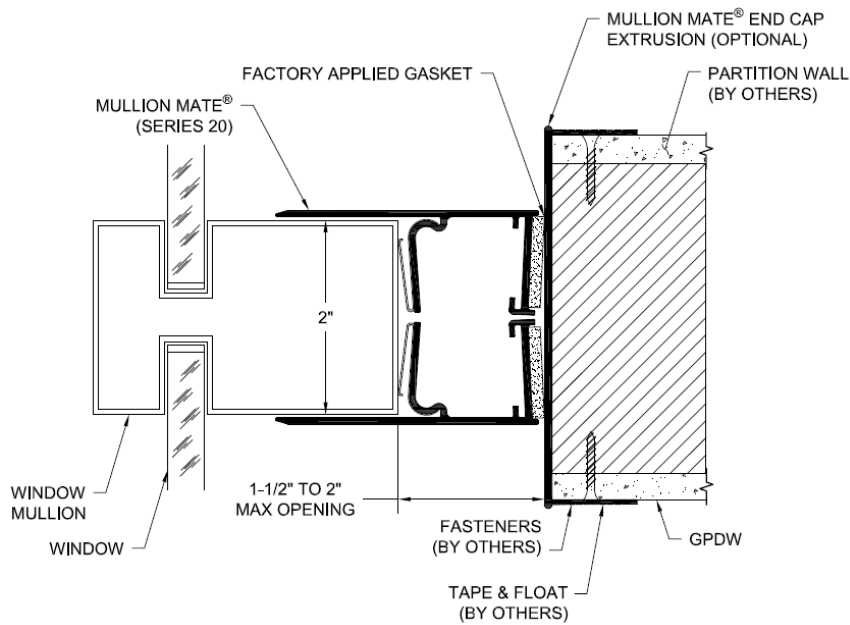


Figure B: Mullion Mate® Series 20 --- MM 1.5 Section

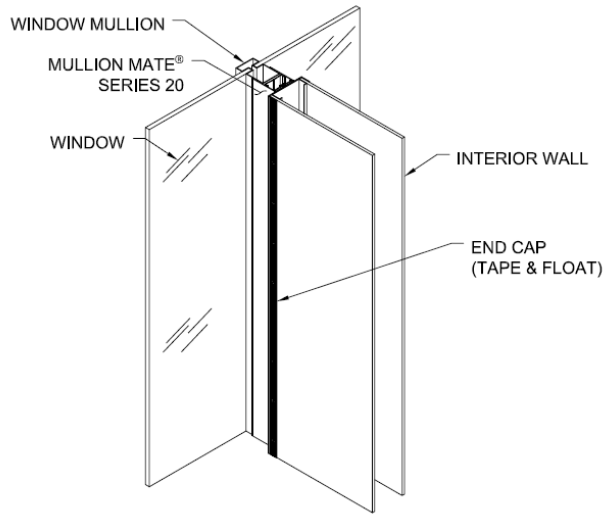


Figure C: Installed Mullion Mate® Series 20 against Mullion and Partition

EXTRUDED MULLION MATE® END CAPS	
PART #	"A"
MMEC-375	3-3/4"
MMEC-487	4-7/8"
MMEC-600	6"
MMEC-725	7-1/4"

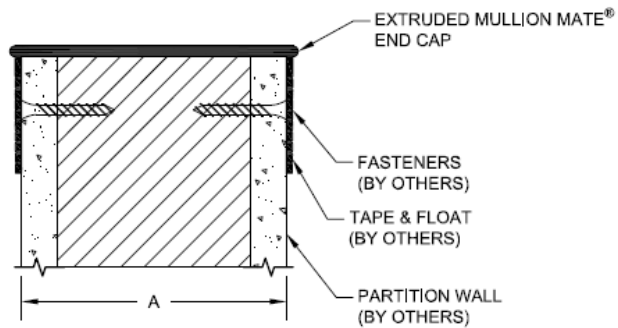
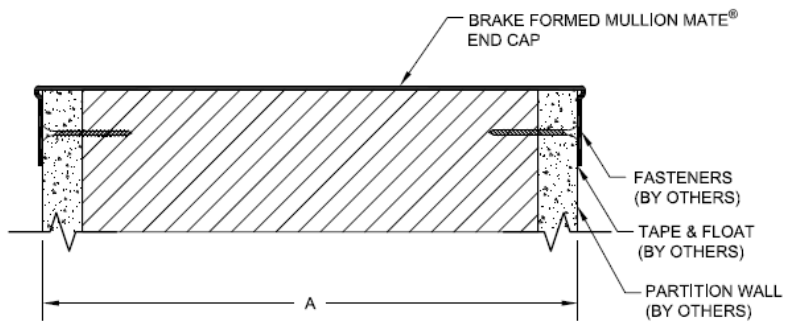


Figure D: Extruded Mullion Mate® End Caps for Partion Walls

BRAKE FORMED MULLION MATE® END CAPS	
PART #	"A"
MMECBF-518	5-1/8"
MMECBF-514	5-1/4"
MMECBF-512	5-1/2"
MMECBF-618	6-1/8"
MMECBF-812	8-1/2"



NOTE: BRAKE FORMED END CAPS CAN BE SIZED TO FIT YOUR WALL. PLEASE PROVIDE WALL THICKNESS TO FACTORY.

Figure E: Brake Formed Mullion Mate® End Caps for Partion Walls

