



MULLION MATE®

Extruded Aluminum Partition Gap Closure
Mullion Mate® Pro FR (Patent Pending)

Installation Instructions



PART 1 - STORAGE AND HANDLING

1. After receiving materials, transfer material immediately to a safe, dry, climate-controlled place where it will not be damaged during storage.
 - a. Do not store Gordon, Inc. product or components outdoors.
 - b. Store Crates and / or Cartons flat in a dry location away from activity.
 - c. Do not store near corrosive material such as acids, salt, fertilizer, etc.
 - d. All materials should be protected during site storage to prevent damage to the finished work from other trades.
 - e. Store materials inside a well-insulated area, away from concrete and masonry and protected from the weather, moisture, soiling, abrasion, extreme temperatures and humidity.
 - f. Protect the strippable protective covering on metal panels from exposure to sunlight, heat, and high humidity.
 - g. Store product in Gordon's unopened packaging until installation of product.
 - h. Prevent contact with material that may cause discoloration, staining, or corrosion.
 - i. Store in flat, fully supported position.
 - j. Store to prevent twisting, bending, abrasion, scratching, and denting.
 - k. Do not drop or stand containers on edges or corners.
 - l. Gordon, Inc. components and systems are not packaged to receive the load of any other material stored or stacked upon it. Therefore, **DO NOT DOUBLE STACK OR STORE OTHER MATERIAL** on top of the packages or crates.
2. Inspect all material prior to installation. Do not install any substandard or unacceptable material. Gordon, Inc. will not be responsible for the cost of repair or removal, or costs resulting from removal of rejected material, or the installation of replacement material.
3. To avoid lasting deformation of the Mullion Mate® Pro FR components when exposed to temperature and humidity extremes, store this material at or near room temperature. Allow a minimum of 48 hours for the product to adjust to internal room temperature and humidity conditions before installing the Mullion Mate® Pro, Fire Rated.
4. Material should be cleaned thoroughly prior to installation.

PART 2 - INSTALLATION

Mullion Mate® Pro FR has been tested in accordance with UL 2079 Standard for Safety, Test for Fire Resistance of Building Joint Systems, Fifth Edition. This assembly is designed to be easily installed and field cut to fit varying job conditions between curtain wall glazing and a partition wall. The Mullion Mate® Pro FR assembly is installed adjacent to a vertical mullion and all components must be installed as described herein. Contact Gordon, Inc. at 318-747-8954 with any questions related to the installation.

2.01 - APPLICABLE CODES AND STANDARDS FOR INSTALLATION

1. Project Specifications
2. Architect approved Shop Drawings

2.02 - SPECIAL TOOLS REQUIRED

If field cutting is required:

- Sharp Scissors or sharp Box Cutting Knife.
- Fine Tooth Saw with a blade recommended for cutting aluminum or metal.

- Wax Stick or similar lubricant.
- Painters Tape/masking applied tape to prevent scratches or damage to area of cut.
- A soft cloth with a 50-50 mixture of water and Isopropyl Alcohol.

2.03 - **INSTALLATION OF MULLION MATE® PRO FR**

Prior to installation: For best results, store this material at or near room temperature. This is strongly recommended to avoid lasting deformation of the internal components when exposed to temperature and humidity extremes. Allow a minimum of 48 hours for product to adjust to internal room temperature and humidity conditions before installing.

Step 1:

Do not remove restraining straps prior to cutting. Do not make cuts at the locations of the restraining straps. The straps also designate the spring locations.

Step 2:

Measure the gap size to confirm a 1/2" gap is present between the wall assembly and the Mullion. See Figure A below.

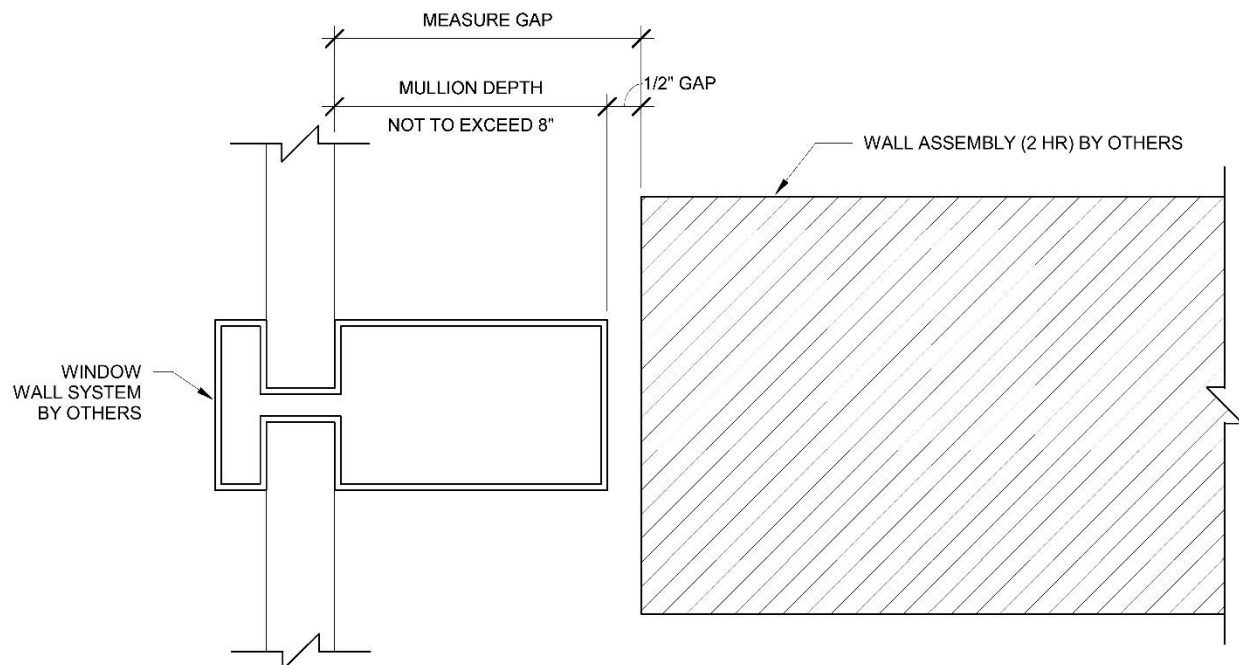


Figure A: *Mullion Mate® Pro FR Gap Preparation*

Step 3:

A loose piece of Insulation was shipped with the order. Stuff this strip of Insulation between the face of the mullion and the face of the wall as illustrated in [Figure B](#) below.

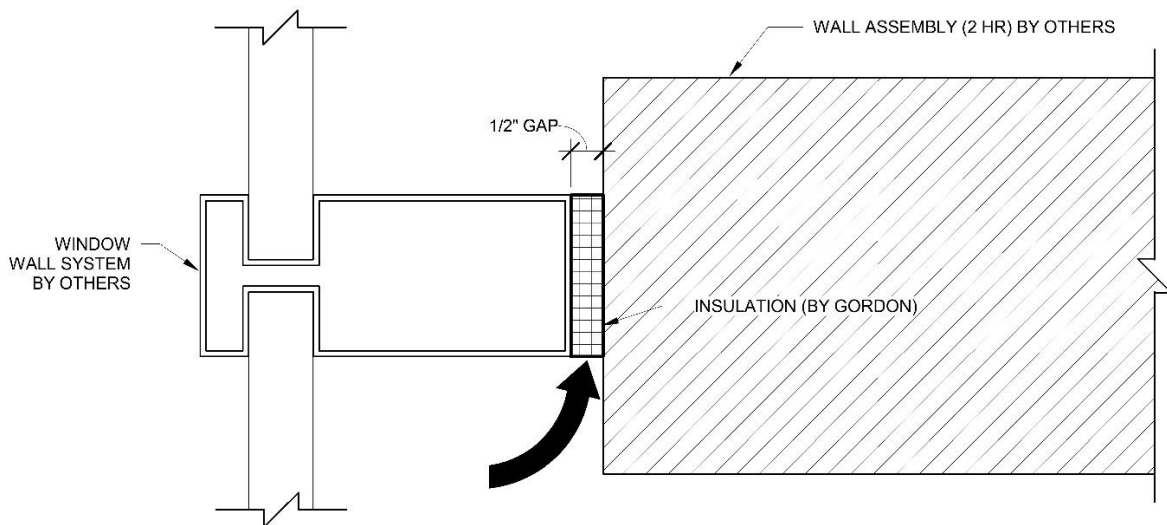


Figure B: *Mullion Mate® Pro FR Insulation Filler in Gap*

Step 4:

Measure the gap size and trim the Insulation Strips to width if necessary. See [Figure C](#) below. The Insulation Strips are manufactured at the maximum gap size to be field cut to friction fit into each individual opening. It can be cut with a bandsaw or even a sharp box cutter.

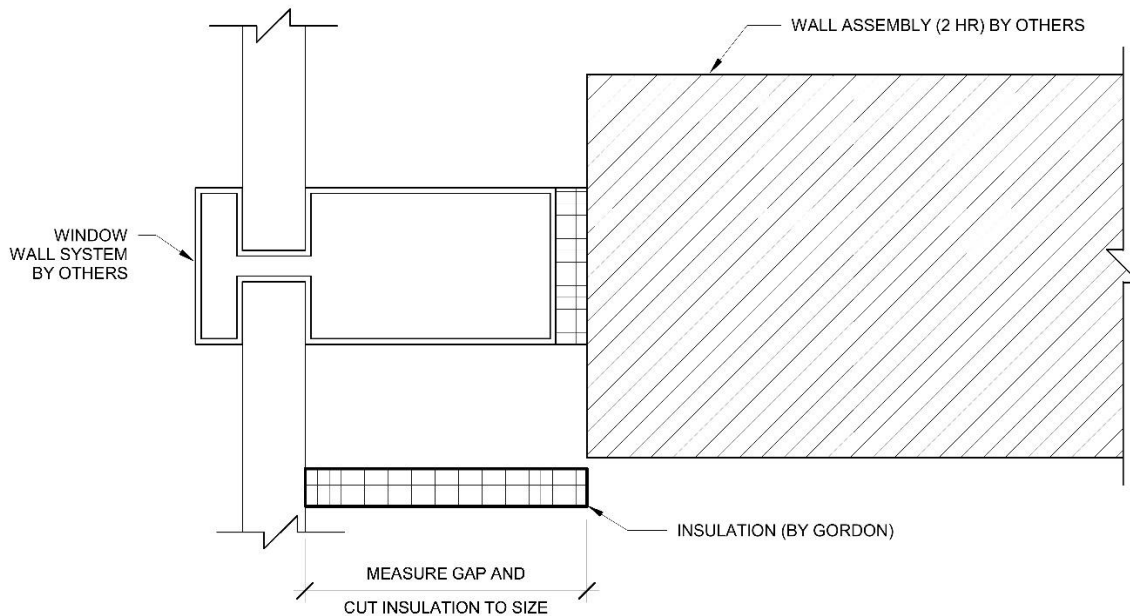


Figure C: *Mullion Mate® Pro FR Fire Blanket Sizing*

Starting from one end of the opening, gently apply pressure to the Insulation towards the mullion, allowing the Insulation to friction fit into place. Work toward the opposite end of the opening.

If the Insulation Strip is too long for the joint, it can be cut using scissors or a sharp knife. Ensure that the assembly contacts the floor and does not curl out away from the mullion. Cut the assembly again if it is not flush with the floor, as a bulge could affect the installation of the Mullion Mate® Pro FR in a later step. See [Figure D](#) below.

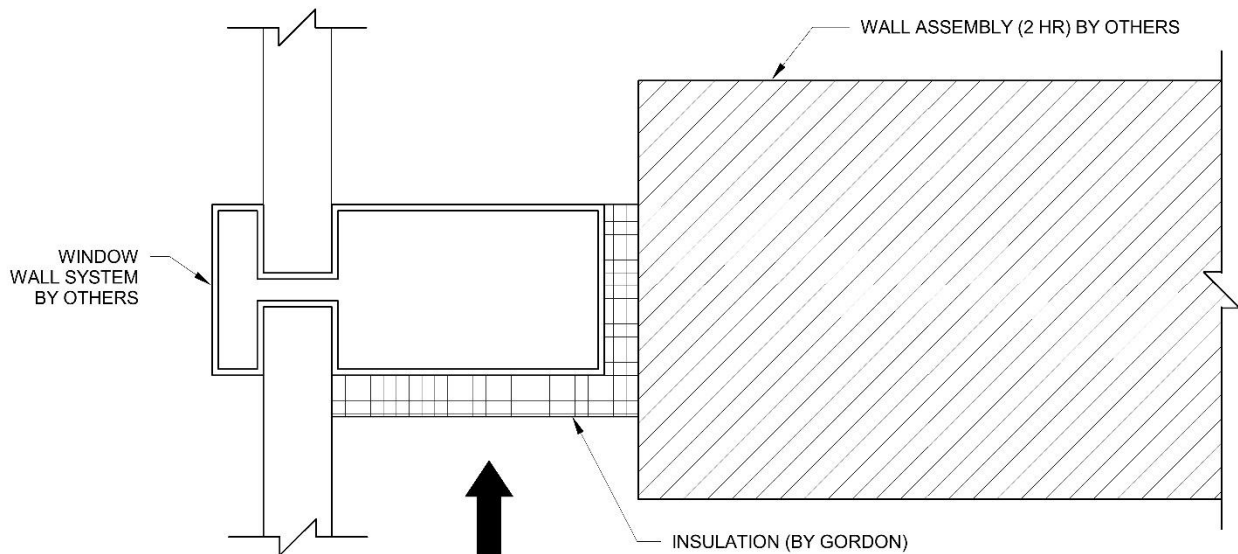


Figure D: *Mullion Mate® Pro FR Installation of Fire Block onto Mullion*

Step 5:

Install the steel corner trim on the corner of the partition wall. Ensure screws (not supplied by Gordon, Inc.) are installed every 10" and that each screw is securely screwed through the steel stud beyond the gypsum. See [Figure E](#) on Page 6.

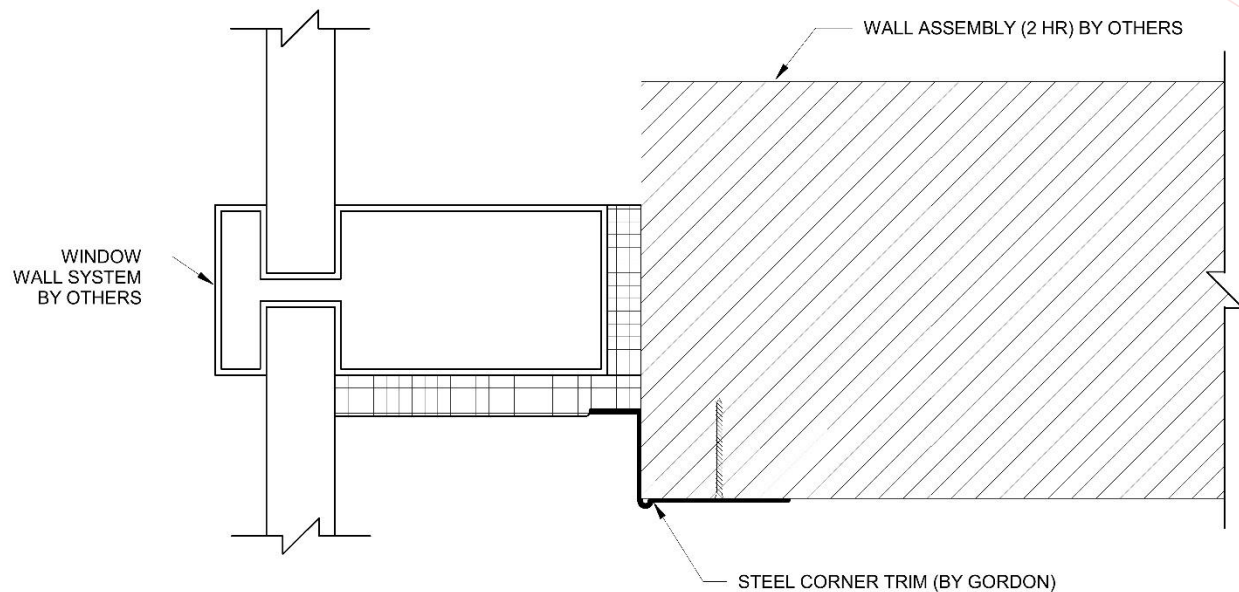


Figure E: *Mullion Mate® Pro FR Corner Trim Installation*

Step 6:

Repeat Steps 4 and 5 on the opposite side of the wall. Tape and float the steel corner beads into place and then paint.

Step 7:

Measure the height of the gap and cut the Mullion Mate® Pro FR to the proper length, if required. Use a fine-tooth metal cutting saw blade on a Chop Saw capable of turning 4,000 rpm. Use a Wax Stick or similar lubricant on the blade prior to cutting.

To reduce finish damage due to the saw blade, apply masking tape to the Mullion Mate® Pro FR at the approximate location where you are cutting and draw the cut line on the tape.

Make the cut and remove the masking tape.

Use optional touch-up kit as needed if the material is painted.

Step 8:

Mullion Mate® Pro FR is shipped with factory applied gasket on each side of the component. The gasket has a release sheet on one side that must be removed to secure Mullion Mate® Pro FR to the adjacent building components. This provides a plumb and firmly secured closure. Peel back several inches of the release sheet. Bend release sheet downward and toward the installer. See [Figure J](#) on the Page 10.

Step 9:

Move Mullion Mate® Pro FR to the outside of the window mullion and align the edge of the Mullion Mate® Pro FR with the edge of the partition wall corner trim. See [Figure F](#) below.

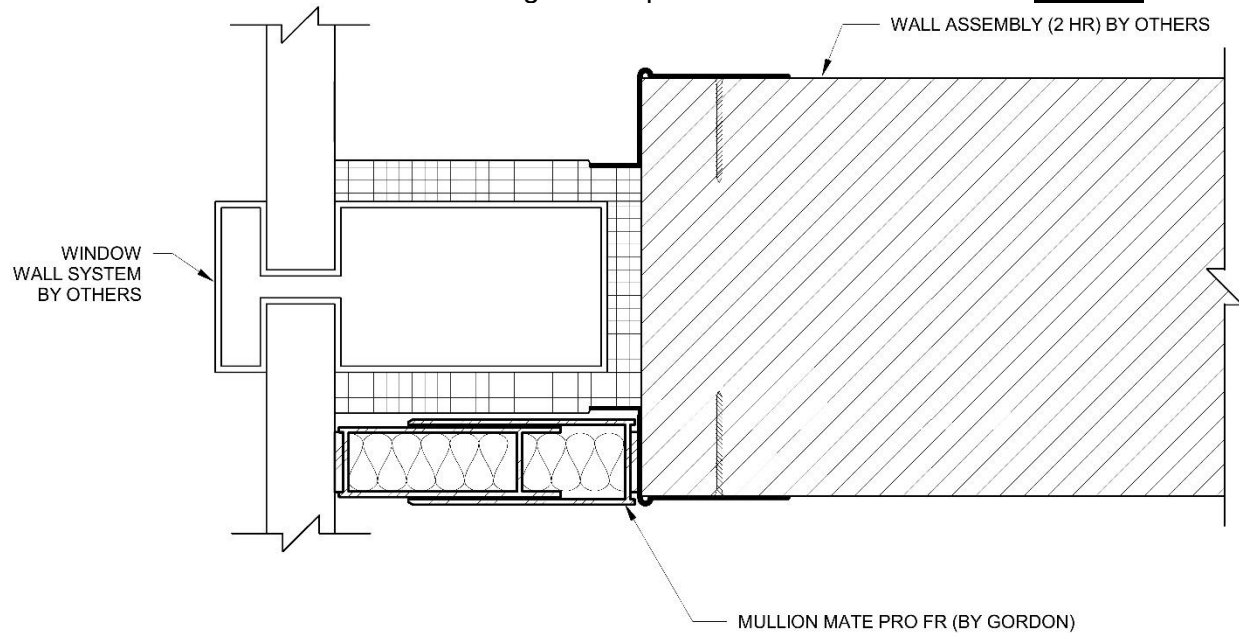


Figure F: *Mullion Mate® Pro FR Installation*

Step 10:

Starting at the top, peel the gasket release sheet away until the first paper restraining strap is reached. Cut through the top paper restraining strap and discard. Continue peeling away the release sheets on the gaskets until the next paper restraining strap is reached. Again, cut through the paper restraining strap and discard. Continue in this sequence until the Mullion Mate® Pro FR fills the void. All paper restraining straps and release sheets can be discarded. Make sure the Mullion Mate® Pro FR remains aligned with the edge of the partition wall while removing the release sheets and straps.

Step 11:

Repeat Steps 7 through 10 on the other side of the window mullion and align with the other side's edge of partition wall when installing. Proper assembly should appear as shown in [Figure G](#) on the next page.

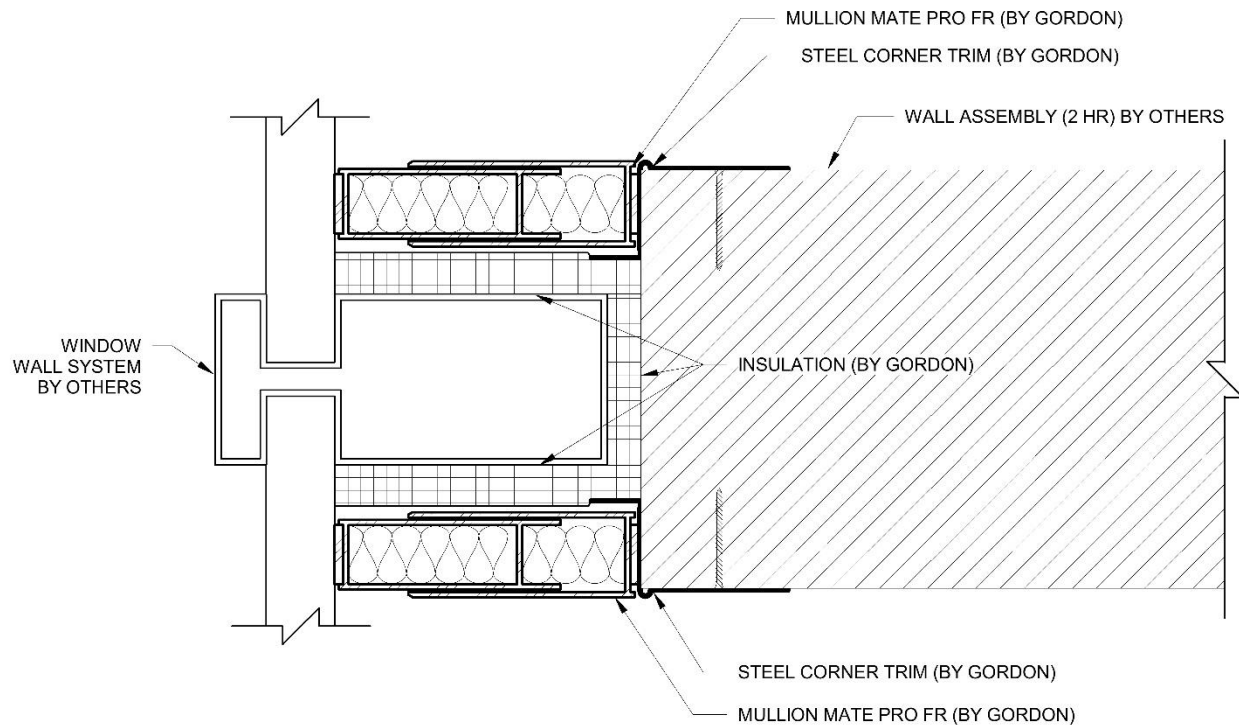


Figure G: Mullion Mate® Pro FR Final Installation (Two sides)

2.04 - FIELD NOTCHING MULLION MATE® PRO FR (IF NEEDED)

Step 1:

When unwrapping the supplied parts, the locations of the springs are defined by tape that reads "NO CUT ZONE!" Disassemble the male and female halves.

Step 2:

Mark the notch to be cut using a Sharpie Ultra Fine Point marker.

Step 3:

Use a jig saw with a fine-tooth blade for cutting metal. Make the cut following the layout lines. A relief cut or several relief cuts will be required for the vertical cut (arching the blade path to the straight layout line before making the straight cut).

Step 4:

Reassemble the two halves after making the required cuts.

Step 5:

Compress to a width narrower than the opening size. Wrap paper around the Mullion Mate® PRO, Fire-Rated at center and close to the ends. Wrap masking tape around the Mullion Mate® Pro FR at the paper locations.

2.06 - REMOVAL AND REINSTALLATION OF MULLION MATE® PRO FR (IF NEEDED)

Step 1:

In order to remove your installed Mullion Mate® Pro FR, you must cut through the gasket on both ends of the Mullion Mate® Pro FR since the gasket has an adhesive that attaches it to the Mullion Mate® Pro FR and the wall/window.

Step 2:

Once the gasket has been cut, compress the Mullion Mate® Pro FR to disengage. Care should be given to ensure that the Mullion Mate® Pro FR does not spring open.

Step 3:

Once removed, tape the Mullion Mate® Pro FR together in order to keep it from springing open.

Step 4:

Use a blade to remove the gasket residue from the window/wall as well as the Mullion Mate® Pro FR.

Step 5:

Reapply a new gasket to the Mullion Mate® Pro FR prior to reinstalling. Contact the factory for new gasket if needed.

PART 3 – ILLUSTRATIONS

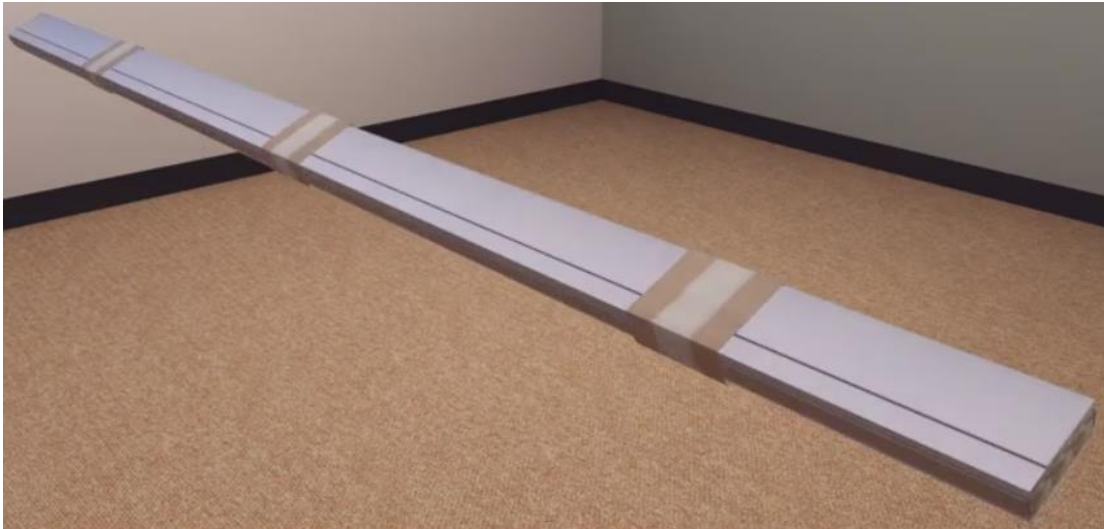


Figure H: *Mullion Mate® Pro FR as shipped with retaining straps*



Figure J: *Mullion Mate® Pro FR in location removing gasket release sheet and straps*

Gordon, Inc.

MULLION MATE® PRO FR



Intertek

CONTROL NO. 5028293

CERTIFIED TO:
UL 2079
CAN/ULC - S115

Refer to the Intertek Directory of Building Products
(<https://bpdirectory.intertek.com>) for detailed information.



5023 HAZEL JONES ROAD
BOSSIER CITY, LA 71111
800-747-8954

WWW.GORDON-INC.COM
SALES@MULLIONMATE.COM

