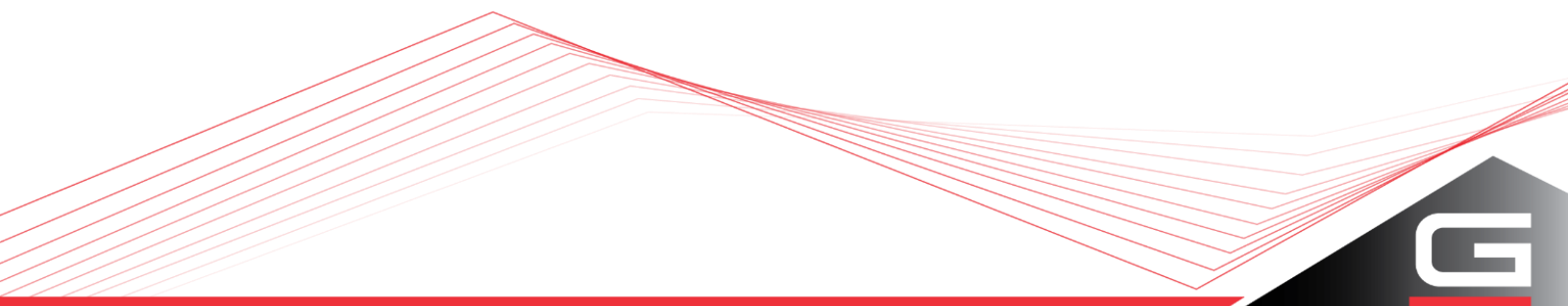


# Light Cove

## Installation Instructions



## **PART 1 - STORAGE AND HANDLING**

1. After receiving materials, transfer material immediately to a safe, dry, climate-controlled place where it will not be damaged during storage.
  - a. Do not store Gordon, Inc. product or components outdoors.
  - b. Store Crates and / or Cartons flat in a dry location away from activity.
  - c. Do not store near corrosive material such as acids, salt, fertilizer, etc.
  - d. All materials should be protected during site storage to prevent damage to the finished work from other trades.
  - e. Store materials inside a well-insulated area, away from concrete and masonry and protected from the weather, moisture, soiling, abrasion, extreme temperatures and humidity.
  - f. Protect the strippable protective covering on metal panels from exposure to sunlight, heat, and high humidity.
  - g. Store product in Gordon's unopened packaging until installation of product.
  - h. Prevent contact with material that may cause discoloration, staining, or corrosion.
  - i. Store in flat, fully supported position.
  - j. Store to prevent twisting, bending, abrasion, scratching, and denting.
  - k. Do not drop or stand containers on edges or corners.
  - l. Gordon, Inc. components and systems are not packaged to receive the load of any other material stored or stacked upon it. Therefore, **DO NOT DOUBLE STACK OR STORE OTHER MATERIAL** on top of the packages or crates.
2. Inspect all material prior to installation. Do not install any substandard or unacceptable material. Gordon, Inc. will not be responsible for the cost of repair or removal, or costs resulting from removal of rejected material, or the installation of replacement material.
3. Material should be cleaned thoroughly prior to installation.

## **PART 2 - INSTALLATION**

### **2.01 - APPLICABLE CODES AND STANDARDS FOR INSTALLATION**

1. Project Specifications
2. Architect approved Shop Drawings

### **2.02 - SPECIAL TOOLS REQUIRED**

- If field cutting is required:
- Radial Arm Saw capable of 3,450 RPM
  - 14" Diameter Blade (Minimum Diameter) with Carbide Tipped "Ply-Teeth"
  - Metal Cutting Wax Stick as a Lubricant
  - 12' Run-Out Table aligned with the Saw to assure square cuts

### **2.03 - Step 1:**

Install drywall as specified and in accordance with Light Cove Shop Drawings or Architectural/Contract Drawings. Care should be taken to locate a continuous drywall

stud directly above the serrated taping flange of the Light Cove to support both the Light Cove and the Light Cove Mounting Bracket.

### **Step 2:**

After determining the height of the bottom of the Light Cove, start the installation of the Light Cove at a factory pre-welded corner. Two (2) Mounting Brackets are provided for each corner and they should be located centered on the joint between the corner and the next Light Cove piece over-hanging at the edges of the corner. This location is approximately 12" from the drywall corner. Be certain that the bottom of the vertical web of the Mounting Bracket is located at the specified distance above the Light Cove ceiling height, as indicated on the Shop Drawings. Use three (3) drywall bugle head screws to fasten the Mounting Bracket into the drywall and stud. The over-sized hole in the center position of the Mounting Bracket allows for both the bugle head screw and extended bit of the screw gun to fit.

### **Step 3:**

On Series 1066 Light Cove, it is critical that the Light Cove be positioned laterally on the drywall soffit to fit both of the Mounting Brackets previously installed. After this is verified and the Light Cove is securely engaged onto the Mounting Bracket, fasten the corner with a minimum of two (2) bugle head screws per side. There will be a total of four (4) screws per corner. The screws go through the round holes on the serrated taping flange.

### **Step 4:**

Proceeding clockwise around the area: If the space between the edge of the installed corner and the opposite drywall corner is less than 11', it will be necessary to install another corner at this time by following the instructions from Steps 2 and 3 above.

### **Step 5:**

Insert three (3) Splice Plates with thumb screws into the bosses of both edges of the corner(s). Slide the Splices beyond the edges and do not lock in place.

### **Step 6:**

Bring up the first full 10' Light Cove segment by holding it just below the corners and determine if any field cutting will be required. If so, Gordon, Inc. suggests using the list of "Special Tools Required" shown in Section 2.02.

### **Step 7:**

Carefully measure the opening to be filled with a field cut segment and measure both the front and back edges of the opening making certain that the cut is to be square. Remember that you will be cutting only one end (so you will have one factory cut end).

### **Step 8:**

After field cutting, or if fitting a full 10' Light Cove segment into position, follow the instructions above for locating the Mounting Brackets approximately 4' on center and straddling the joints between corners and segments. Hang the Light Cove on the Mounting Brackets and align with the previously installed corners or segments. Slide the three (3) Splice Plates into the bosses of the newly installed segment, making sure that a thumb screw is over each piece to be spliced. Fasten the newly installed segment into the drywall following the instructions above, and space the screws a minimum of 8" on center. Make sure to also fasten the top of the Light Cove into the top of the Mounting Bracket.

### **Step 9:**

Proceed around the area until all corners and segments are installed.

### **Step 10:**

It may be necessary to fill slight gaps that may have been caused during the installation. A paintable, elastic silicon caulk on a fingertip that is carefully applied over the gap should be adequate for this task. This same paintable, elastic silicon caulk can be used at all joints to prevent the light leak as well.

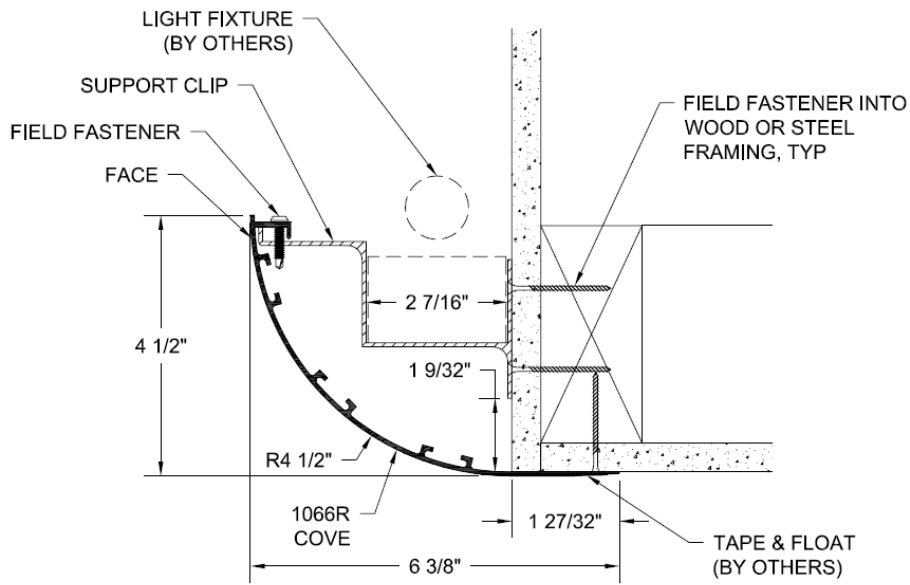
### **Step 11:**

Clean the Light Cove prior to taping and floating, by removing all cutting wax, surface oils, and grease.

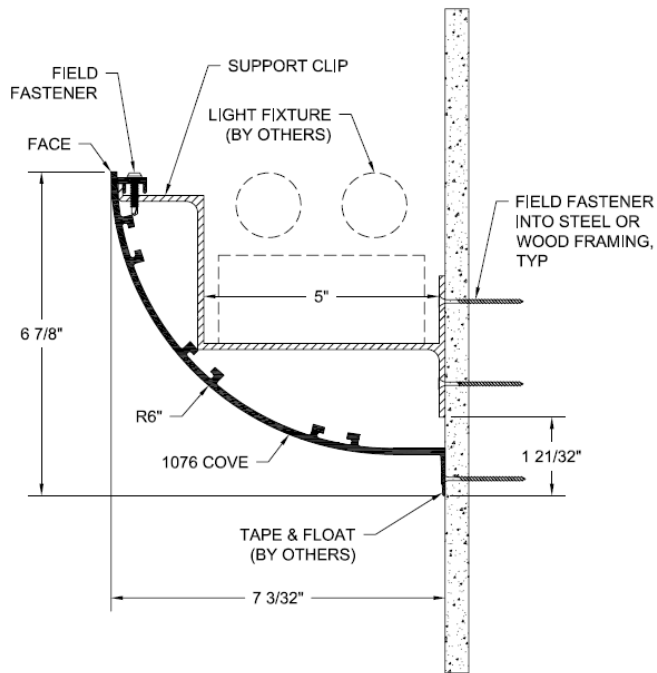
### **Step 12:**

Follow Final Forms I Installation Instructions for proper tape and float procedures.

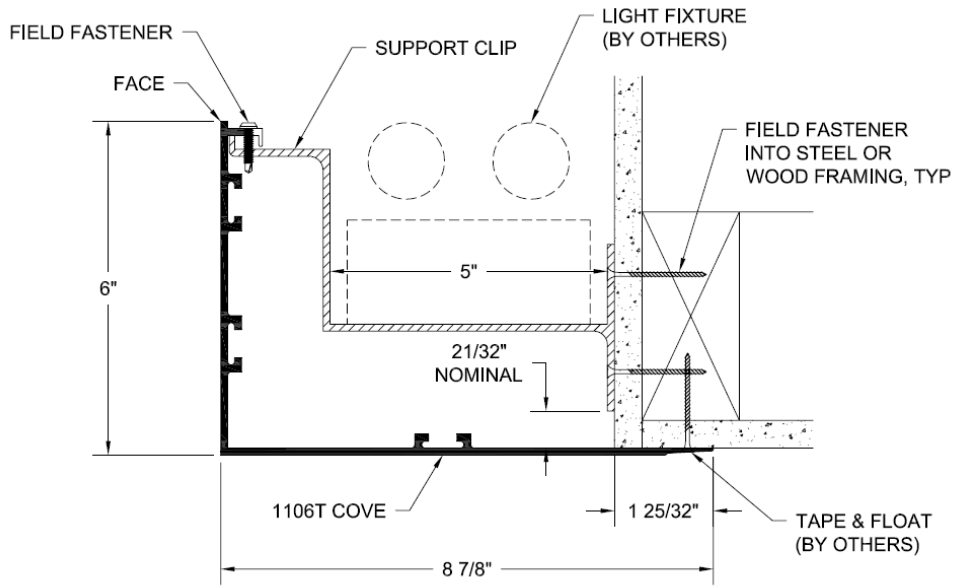
**PART 3 – ILLUSTRATIONS**



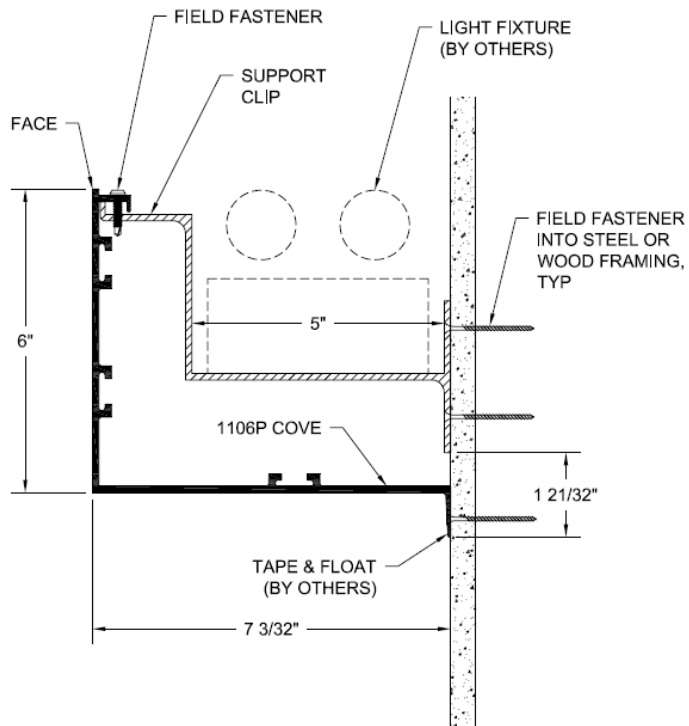
**Figure A:** Light Cove 1066R



**Figure B:** Light Cove 1076



**Figure C:** *Light Cove 1106T*



**Figure D:** *Light Cove 1106P*

**GORDON**<sup>®</sup>  
ARCHITECTURAL+ENGINEERED SOLUTIONS

5023 HAZEL JONES ROAD  
BOSSIER CITY, LA 71111  
800-747-8954

WWW.GORDON-INC.COM  
SALES@GORDON-INC.COM

