



CEL·LINE[®]

SECURITY ACOUSTICAL CEILING

INSTALLATION INSTRUCTIONS

GORDON[®]
ARCHITECTURAL+ENGINEERED SOLUTIONS



PART 1 - STORAGE AND HANDLING

1. After receiving materials, transfer material immediately to a safe, dry, climate-controlled place where it will not be damaged during storage.
 - a. Do not store Gordon, Inc. product or components outdoors.
 - b. Store Crates and / or Cartons flat in a dry location away from activity.
 - c. Do not store near corrosive material such as acids, salt, fertilizer, etc.
 - d. All materials should be protected during site storage to prevent damage to the finished work from other trades.
 - e. Store materials inside a well-insulated area, away from concrete and masonry and protected from the weather, moisture, soiling, abrasion, extreme temperatures and humidity.
 - f. Protect the strippable protective covering on metal panels from exposure to sunlight, heat, and high humidity.
 - g. Store product in Gordon's unopened packaging until installation of product.
 - h. Prevent contact with material that may cause discoloration, staining, or corrosion.
 - i. Store in flat, fully supported position.
 - j. Store to prevent twisting, bending, abrasion, scratching, and denting.
 - k. Do not drop or stand containers on edges or corners.
 - l. Gordon, Inc. components and systems are not packaged to receive the load of any other material stored or stacked upon it. Therefore, **DO NOT DOUBLE STACK OR STORE OTHER MATERIAL** on top of the packages or crates.
2. Inspect all material prior to installation. Do not install any substandard or unacceptable material. Gordon, Inc. will not be responsible for the cost of repair or removal, or costs resulting from removal of rejected material, or the installation of replacement material.
3. Material should be cleaned thoroughly prior to installation.

PART 2 - INSTALLATION

Acoustical materials and Suspension System shall conform to the latest edition of reference standards or construction documents listed below, and to applicable codes and requirements of local authorities having jurisdiction. Whenever a conflict occurs, consult the project Architect as to which requirements shall apply.

2.01 –APPLICABLE CODES AND STANDARDS FOR INSTALLATION

1. Project Specifications
2. Architect approved Shop Drawings
3. American Society for Testing and Materials:
 - ASTM C634: Definition of terms relative to environmental acoustics
 - ASTM C635: Specifications for metal suspension systems
 - ASTM C636: Recommended practice for installation of metal ceiling suspension systems.
4. Ceilings and Interior Systems Construction Association (CISCA)
 - Ceiling Systems Handbook

2.02 – INSTALLATION SEQUENCE

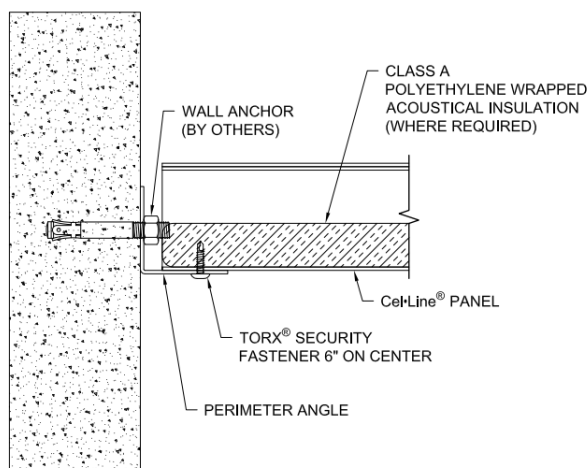
NOTE: Instructions for both the Exposed Fastener System and Concealed Fastener System are shown below. Ensure you follow the appropriate steps for the system used with your project.

Step 1:

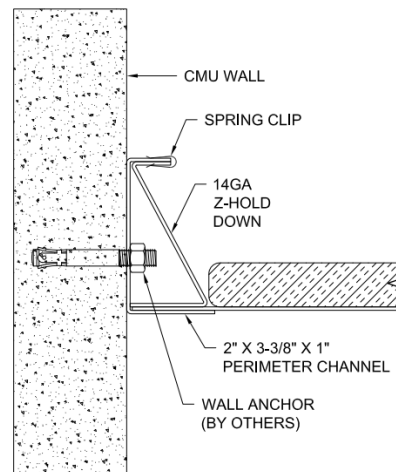
Review completely and comply with the Contract Documents, the approved Shop Drawings, and Gordon, Inc.'s CEL•LINE® Installation Instructions.

Step 2:

Perimeter (Wall Angle or Perimeter Channel) shall be installed level and anchored to the wall in accordance with the Contract Documents and the approved Shop Drawings. A Wall Angle is used with the Exposed Fastener System, and a Perimeter Channel is used with the Concealed Fastener System. Each Wall Anchor must be checked to ensure proper engagement with the wall. Properly installed Anchors must compress the Wall Angle or Perimeter Channel against the wall to the greatest extent possible. Physically apply an upward and downward load to the exposed Flange to verify secure attachment.



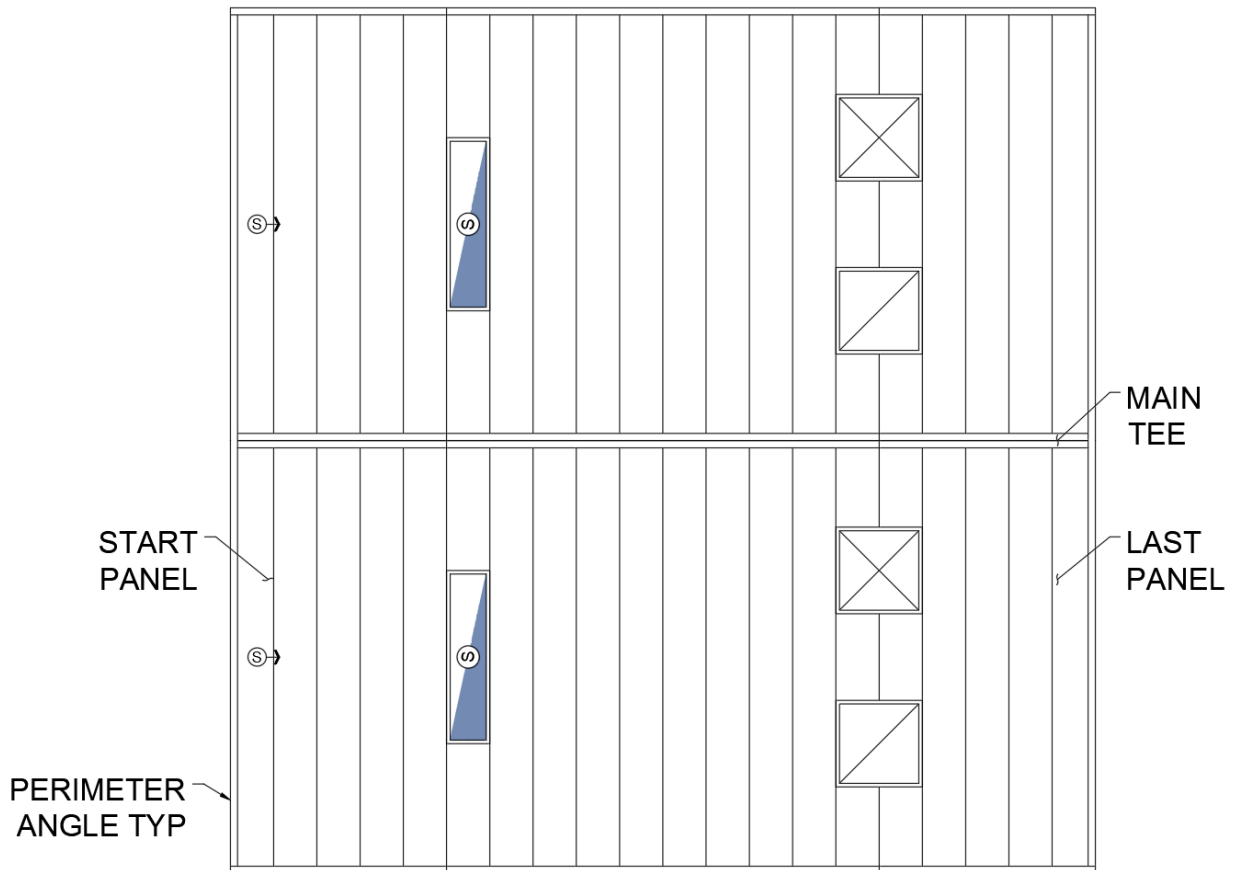
Exposed Fastener System



Concealed Fastener System

Step 3:

When constructing multiple bay Ceiling Systems, take care to align Panel joints between adjoining bays to maintain an acceptable linear layout appearance.

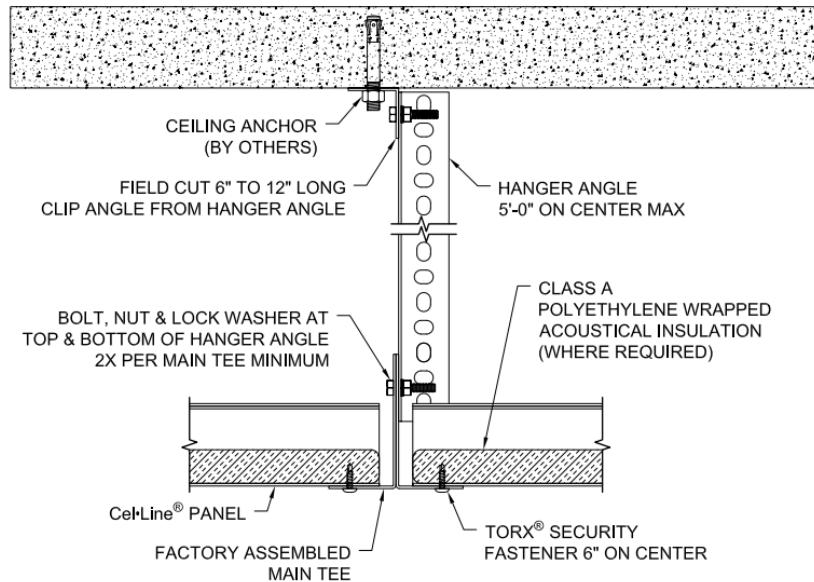


Step 4:

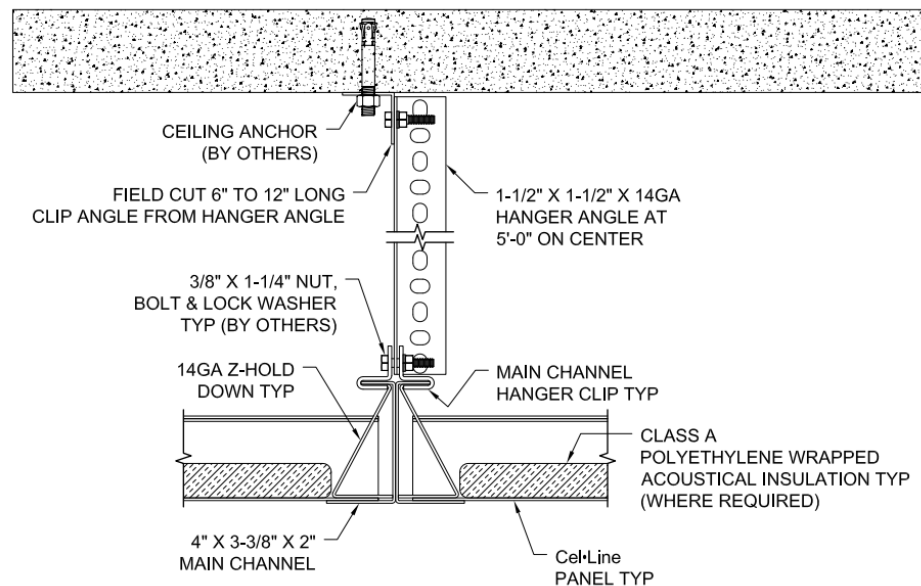
Wall Angles/Perimeter Channels and Main Tees must be butted tightly together.

Step 5:

Review Main Tee hangers and ensure they are properly attached to the structure above and placed in accordance with approved Shop Drawings. Impose a minimum 150-pound load on each hanger to verify positive engagement.



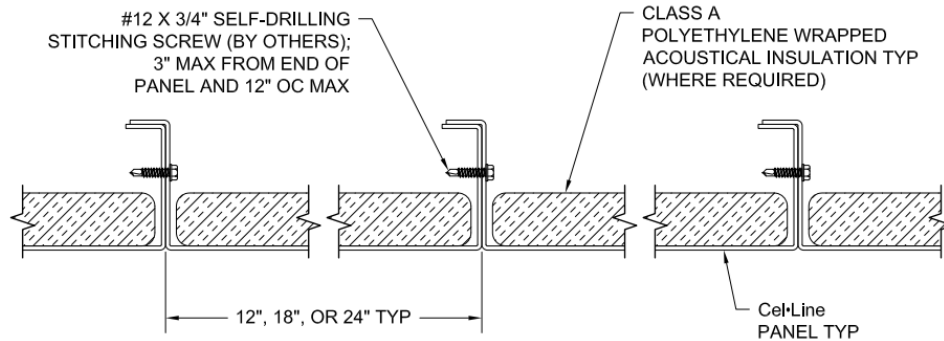
Exposed Fastener System



Concealed Fastener System

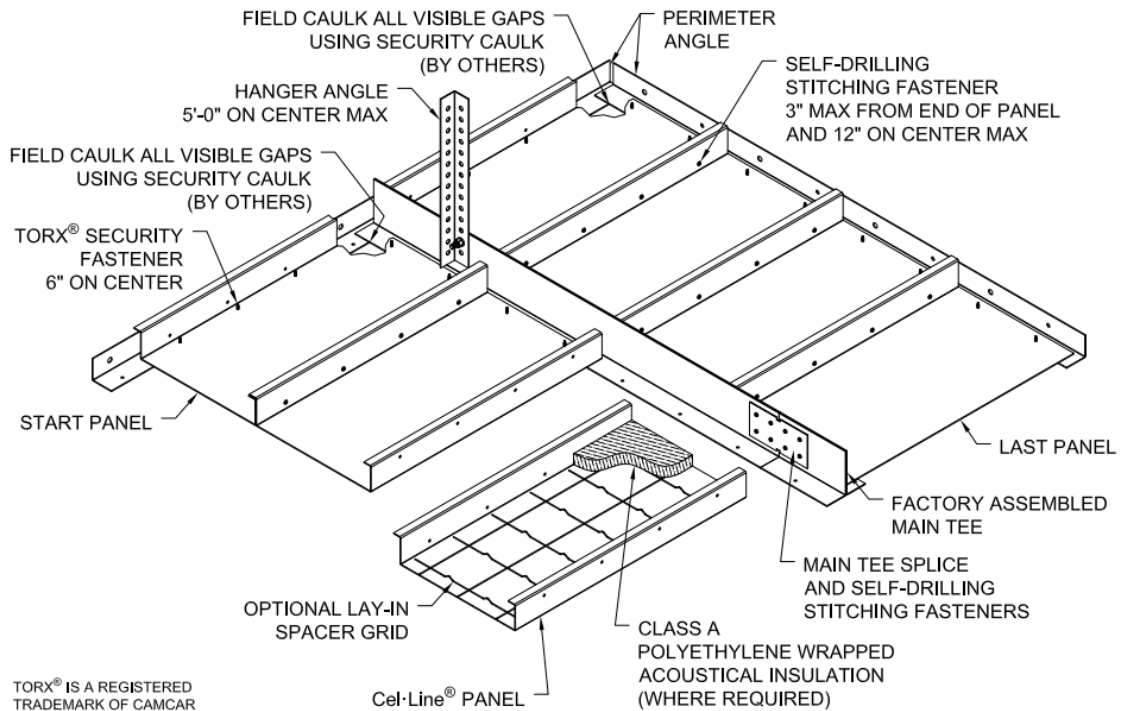
Step 6:

CEL•LINE® Planks shall sit flush on the support system and shall be securely attached. Side stitch shi lap Panel joints in accordance with approved Shop Drawings and Contract Documents. Tightly fasten Panel joints to prevent penetration.



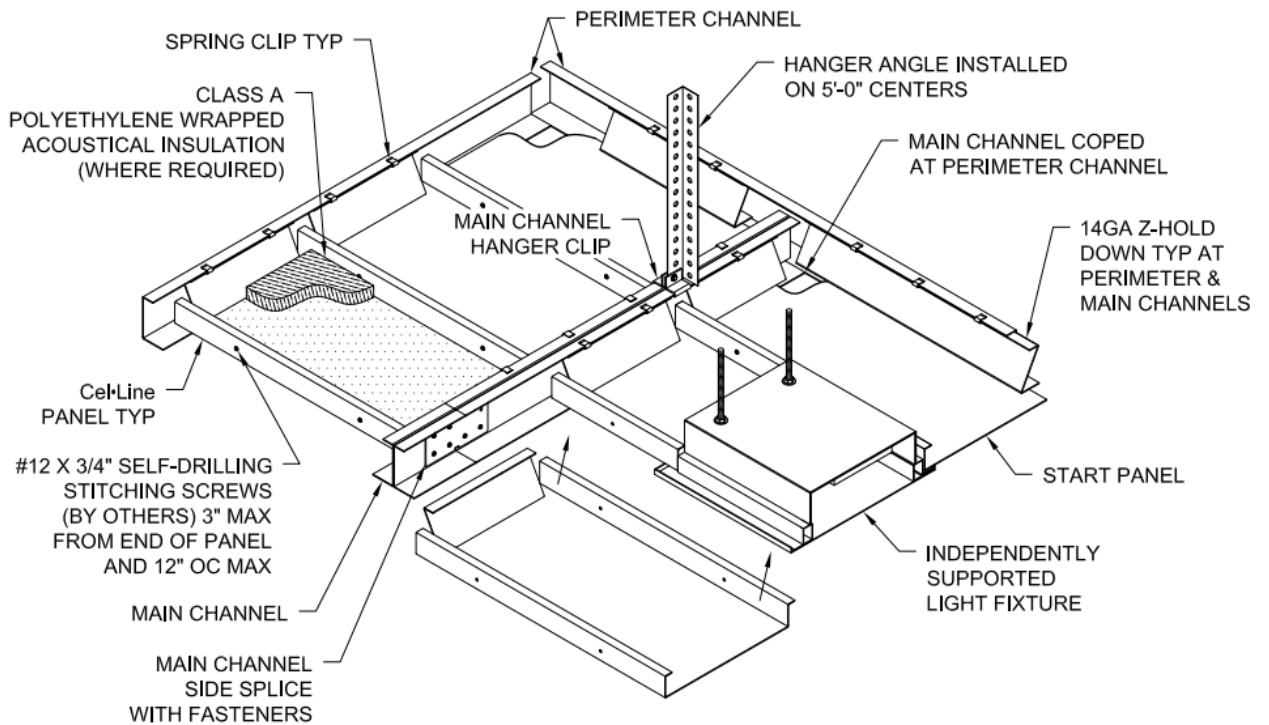
Step 7:

For the Exposed Fastener System, ensure exposed Torx® fastening holes on Wall Angle (typically 6" O.C.) are properly aligned to provide symmetric spacing across the Panel width. Use two (2) screws per 12" wide Plank; three (3) screws per 18" wide Plank; and four (4) screws per 24" wide Plank.



Exposed Fastener System

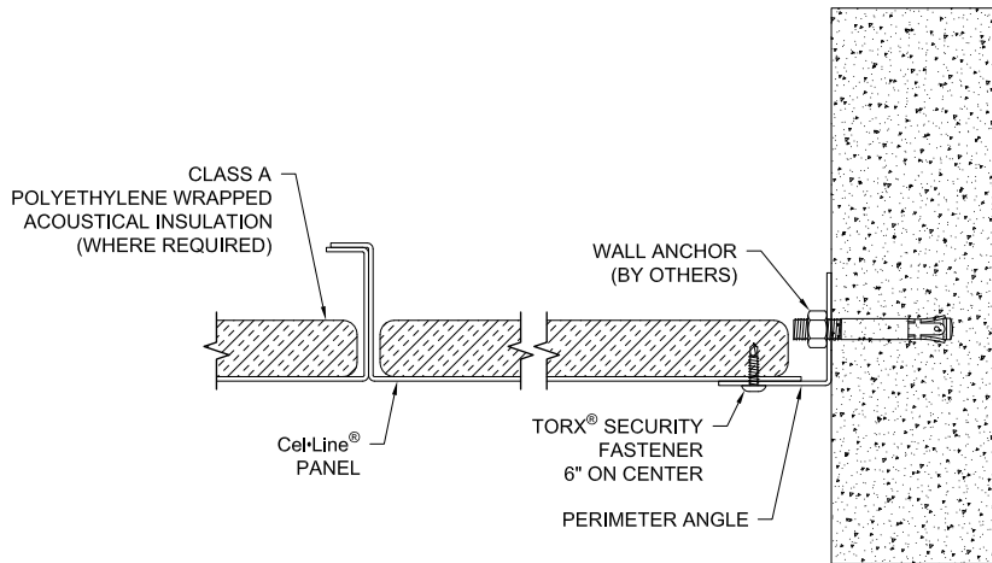
For Concealed Fastener System, ensure Hold-Down “Spreader Zees” are properly engaged within the Perimeter Channel and Clips are properly installed.



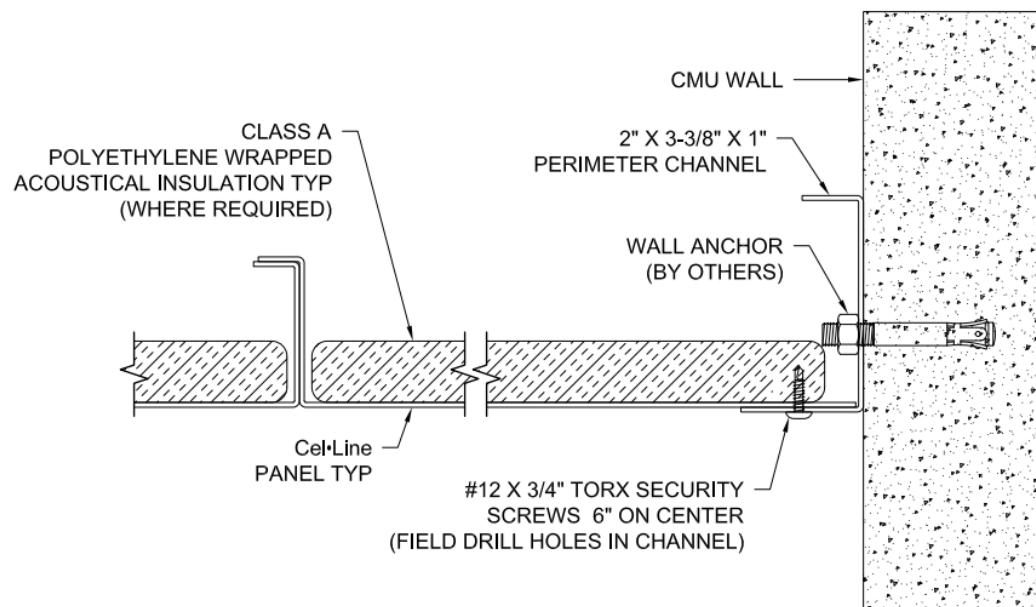
Concealed Fastener System

Step 8:

Regardless of system used, the Last Panel is attached at the perimeter with exposed fasteners.



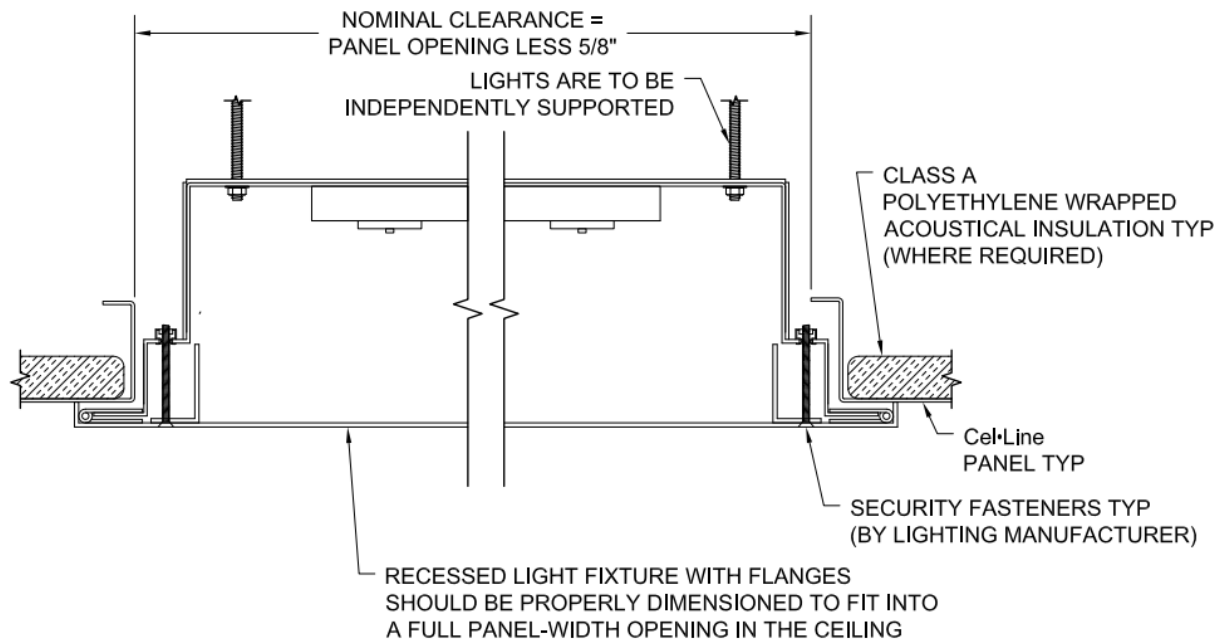
Exposed Fastener System



Concealed Fastener System

Step 9:

Cut out all rough openings to the proper dimensions to allow for coverage by a flanged fixture.



Step 10:

Caulk all joints and crevices using tamper-proof or tamper-resistant security caulk as required by the Contract Documents. Clean and touch-up finished material as required.

2.03 – CUTTING AND SHEARING

CEL•LINE® Security Acoustical Ceiling can be cut with the use of the following tools:

- Industrial use circular saw with metal cutting wheel
- “Port-a-band” saw
- Plasma cutter
- 11-16 Gauge hand-held nibblers
- 11-16 Gauge hand-held shears

SAFETY PRECAUTIONS:

- Refer to tool manufacturer’s detailed guides for proper selection and safe operation of all tools and equipment.
- Gloves should be worn to prevent injury while handling Panels.
- Safety glasses should be worn to prevent eye injury when cutting or drilling steel Panels.

2.03 – ESTIMATING SCREWS

Wall Angle	=	Two (2) per linear foot of Wall Angle
Main Tee	=	Four (4) per linear foot of Main Tee
Waste Factor	=	5% (typical)

2.03 – TOUCH-UP PAINT

Touch-up paint is available by request to Gordon, Inc. Security Systems Division at 866-733-3851.

Use of touch-up paint on powder coated CEL•LINE® should be limited and avoided where possible, as this air-dry paint is not as durable, and may appear slightly different in color and gloss level than the original finish.

CAUTION:

FAILURE TO FULLY AND COMPLETELY ADHERE TO THESE INSTALLATION INSTRUCTIONS MAY RESULT IN SERIOUS INJURY TO THE INSTALLER OR ALLOW A FUTURE SECURITY BREECH THAT COULD ENDANGER THE LIFE SAFETY OF OFFICERS AND INMATES.



5023 HAZEL JONES ROAD
BOSSIER CITY, LA 71111
800-747-8954

WWW.GORDON-INC.COM
SALES@GORDON-INC.COM

