



TRUFORM™
Extruded Aluminum Architectural Profiles

Wallcovering Profiles

Installation Instructions



PART 1 - STORAGE AND HANDLING

1. After receiving materials, transfer material immediately to a safe, dry, climate-controlled place where it will not be damaged during storage.
 - a. Do not store Gordon, Inc. product or components outdoors.
 - b. Store Crates and / or Cartons flat in a dry location away from activity.
 - c. Do not store near corrosive material such as acids, salt, fertilizer, etc.
 - d. All materials should be protected during site storage to prevent damage to the finished work from other trades.
 - e. Store materials inside a well-insulated area, away from concrete and masonry and protected from the weather, moisture, soiling, abrasion, extreme temperatures and humidity.
 - f. Protect the strippable protective covering on metal panels from exposure to sunlight, heat, and high humidity.
 - g. Store product in Gordon, Inc.'s unopened packaging until installation of product.
 - h. Prevent contact with material that may cause discoloration, staining, or corrosion.
 - i. Store in flat, fully supported position.
 - j. Store to prevent twisting, bending, abrasion, scratching, and denting.
 - k. Do not drop or stand containers on edges or corners.
 - l. Gordon, Inc. components and systems are not packaged to receive the load of any other material stored or stacked upon it. Therefore, **DO NOT DOUBLE STACK OR STORE OTHER MATERIAL** on top of the packages or crates.
2. Inspect all material prior to installation. Do not install any substandard or unacceptable material. Gordon, Inc. will not be responsible for the cost of repair or removal, or costs resulting from removal of rejected material, or the installation of replacement material.
3. To avoid lasting deformation of the Truform™ Architectural Profiles when exposed to temperature and humidity extremes, store this material at or near room temperature. Allow a minimum of 48 hours before installation for the product to adjust to internal room temperature and humidity conditions before installing the Truform™ Architectural Profiles.
4. Material should be cleaned thoroughly prior to installation.

PART 2 - INSTALLATION

Truform™ Architectural Profiles are designed to be easily installed and field cut to fit varying job conditions. Truform™ Wallcovering Profiles feature a factory punched, tapered, and grooved flange for bonding of joint tape, drywall compound and wallcovering adhesive. Installed onto a gypsum board surface, they provide a smooth transition between the drywall surface and the decorative profile, including a pocket to insert and protect the edge of the wallcovering. (For more information on the Truform™ product offering contact a Truform™ service representative at 800-747-8954).

2.01 - APPLICABLE CODES AND STANDARDS FOR INSTALLATION

1. Project Specifications
2. Architect approved Shop Drawings

2.02 - SPECIAL TOOLS REQUIRED

If field cutting is required:

- Fine tooth saw with a blade recommended for cutting aluminum or metal.
- Wax stick or similar lubricant.

2.03 - INSTALLATION OF TRUFORM™ WALLCOVERING PROFILES

Prior to installation: For best results, store this material at or near room temperature. This is strongly recommended to avoid lasting deformation of the internal components when exposed to temperature and humidity extremes. Allow a minimum of 48 hours before installation for product to adjust to internal room temperature and humidity conditions.

Step 1:

Select the Truform Wallcovering Profile based on intended use on the drywall partition or ceiling

Step 2:

Layout drywall surface with chalk lines.

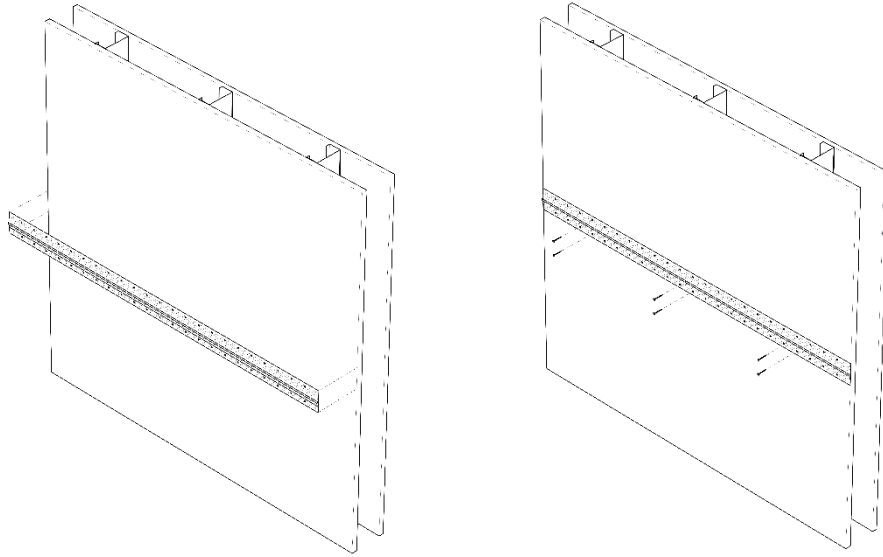
Cut Truform™ Wallcovering Profile to the proper length. Corners should be mitered. Butt joints should be tight and fastened within 3" of ends.

Use a fine-tooth metal cutting saw blade on a chop saw capable of turning 4,000 rpm. Use a wax stick or similar lubricant on the blade prior to cutting.

Step 3:

Screw the profile through the factory-punched, round holes 8" to 24" O.C. with #6 bugle head drywall screws. Screws should sit flush with the taping flange and tap studs where possible. Ensure screw length is a minimum of 5/8" longer than the thickness of the GPDW. Heavy duty staples may also be used.

Check for protrusion of screw heads by drawing a finishing knife across the entire surface length.



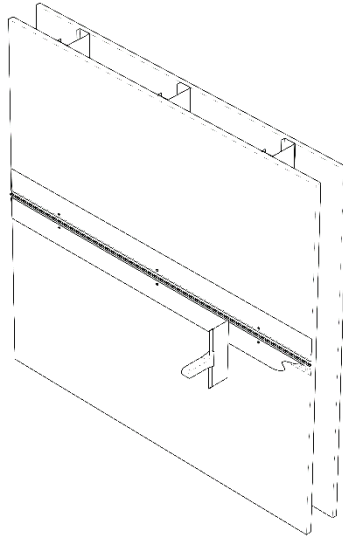
Step 4:

Prior to taping, mudding and painting, wipe metal with dry cloth or thinner to remove dust, dirt or oils picked up during transit, handling, or installation.

Use paper or fiberglass joint tape and bed with standard drywall joint compound per Gypsum Association GA 216. Take care to assure the tape and joint compound do not overlap the upper flange intended for wallcovering adhesive.

Step 5:

After proper curing of initial coat (usually 24 hours), apply final skim coat with an 8" wide flexible metal trowel. Run one edge of the trowel along the shoulder of the profile and the other edge along the gypsum board surface to obtain a flat appearance. Three (3) separate coats of joint compound is generally recommended, per GA 216

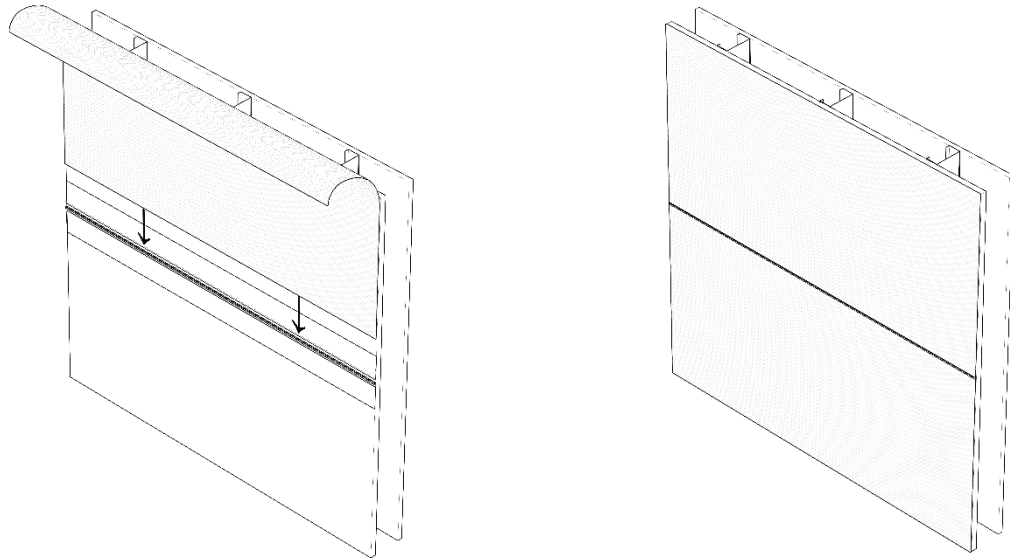


Step 6:

Clean excess compound from exposed portion of trim. Finish sand and “feather” joint with fine grit sandpaper or equivalent abrasive. Apply wall covering with adhesive in accordance to manufacturers’ instructions over the upper flange closest to the wallcovering pocket. Field paintable finished trim is coated with a chemical conversion coating for bonding of joint compound and paint or supplied as clear or color anodized for the final finish.

Step 7:

When installing Wallcovering, tuck the end of the Wallcovering under the lip of the protruded feature on the Truform™ Wallcovering Profile. The lip is designed to hide and protect the cut edge of the Wallcovering.



2.04 – FACTORY FABRICATED INTERSECTIONS

Factory fabricated intersections are available for Truform™ Wallcovering Profiles. Intersections are available for both four-way and three-way intersections as well as inside corners, outside corners, and “L” intersections. The joints are mitered and factory welded. Custom length legs and custom angles are available. For more information, contact a Truform™ service representative at 800-747-8954.

2.05 – FACTORY CURVING

Truform™ Wallcovering Profiles can be factory curved. Factory curving is available for most profiles in the form of inside curve, outside curve, arch, and reverse arch. For more information, contact a Truform™ service representative at 800-747-8954.

GORDON[®]
ARCHITECTURAL+ENGINEERED SOLUTIONS

5023 HAZEL JONES ROAD
BOSSIER CITY, LA 71111
800-747-8954

WWW.GORDON-INC.COM
SALES@MULLIONMATE.COM

