



# **CleanCove**

## **Cleanroom**

# **Installation Instructions**



## **PART 1 - STORAGE AND HANDLING**

1. After receiving materials, transfer material immediately to a safe, dry, climate-controlled place where it will not be damaged during storage.
  - a. Do not store Gordon, Inc. product or components outdoors.
  - b. Store Crates and / or Cartons flat in a dry location away from activity.
  - c. Do not store near corrosive material such as acids, salt, fertilizer, etc.
  - d. All materials should be protected during site storage to prevent damage to the finished work from other trades.
  - e. Store materials inside a well-insulated area, away from concrete and masonry and protected from the weather, moisture, soiling, abrasion, extreme temperatures and humidity.
  - f. Store product in Gordon's unopened packaging until installation of product.
  - g. Prevent contact with material that may cause discoloration, staining, or corrosion.
  - h. Store in flat, fully supported position.
  - i. Store in a manner to prevent twisting, bending, abrasion, scratching, and denting.
  - j. Do not drop or stand containers on edges or corners.
  - k. Gordon, Inc. components and systems are not packaged to receive the load of any other material stored or stacked upon it. Therefore, **DO NOT DOUBLE STACK OR STORE OTHER MATERIAL** on top of the packages or crates.
2. Inspect all material prior to installation. Do not install any substandard or unacceptable material. Gordon, Inc. will not be responsible for the cost of repair or removal, or costs resulting from removal of rejected material, or the installation of replacement material.
3. Material should be cleaned thoroughly prior to installation.

## **PART 2 - INSTALLATION**

CleanCove shall be installed to wall and suspension ceiling system. Suspension ceiling system to be installed in accordance with ASTM C-636, "Installation of Metal Ceiling Suspension Systems for Acoustical Tile and Lay-In Ceilings". Below is recommended installation sequence.

### **2.01 - APPLICABLE CODES AND STANDARDS FOR INSTALLATION**

1. Project specifications
2. Architect approved shop drawings

### **2.02 - SPECIAL TOOLS REQUIRED**

- Cordless drill and #2 Phillips head bit.
- Fine tooth carbide tip blade/saw.
- Painters tape/masking applied tape to prevent scratches or damage to area of cut.
- Caulk Gun, owner approved white caulk.

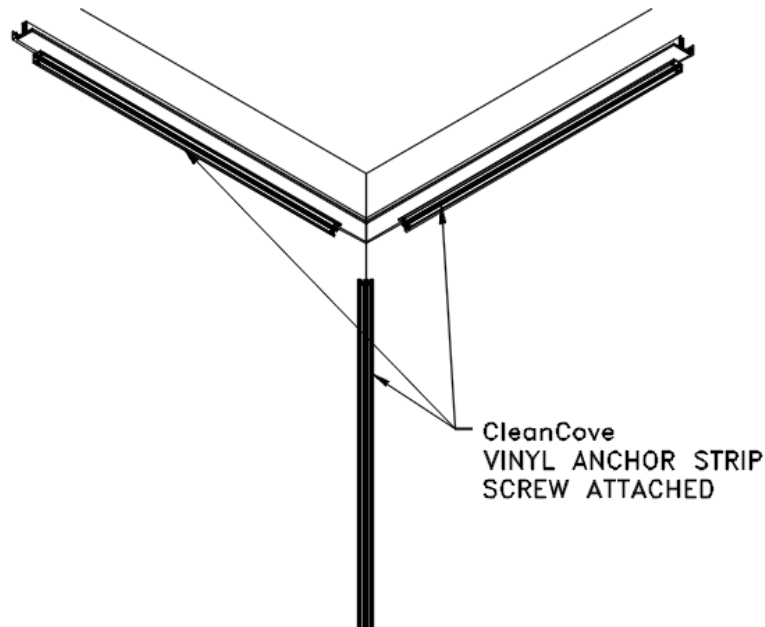
### **2.03 - INSTALLATION SEQUENCE**

**Note: When installing CleanCove with a Gordon cleanroom ceiling, refer to Figures B – G (pages 6-9) for proper suspension installation.**

**Step 1:**

Install vinyl anchor strip securely in the wall corner or wall to ceiling corner, beginning approximately 4 inches from the inside corner intersection where walls and ceilings meet.

Anchor strips may be attached to the wall 4" from wall-ceiling corner using flat head screws.



**Step 2:**

Apply a bead of white, owner-approved caulk sealant to the surface on the back edge of the 3 arms inside corners of the CleanCove 3 way casting that meet the wall and ceiling. **See Fig A. (page 4)**

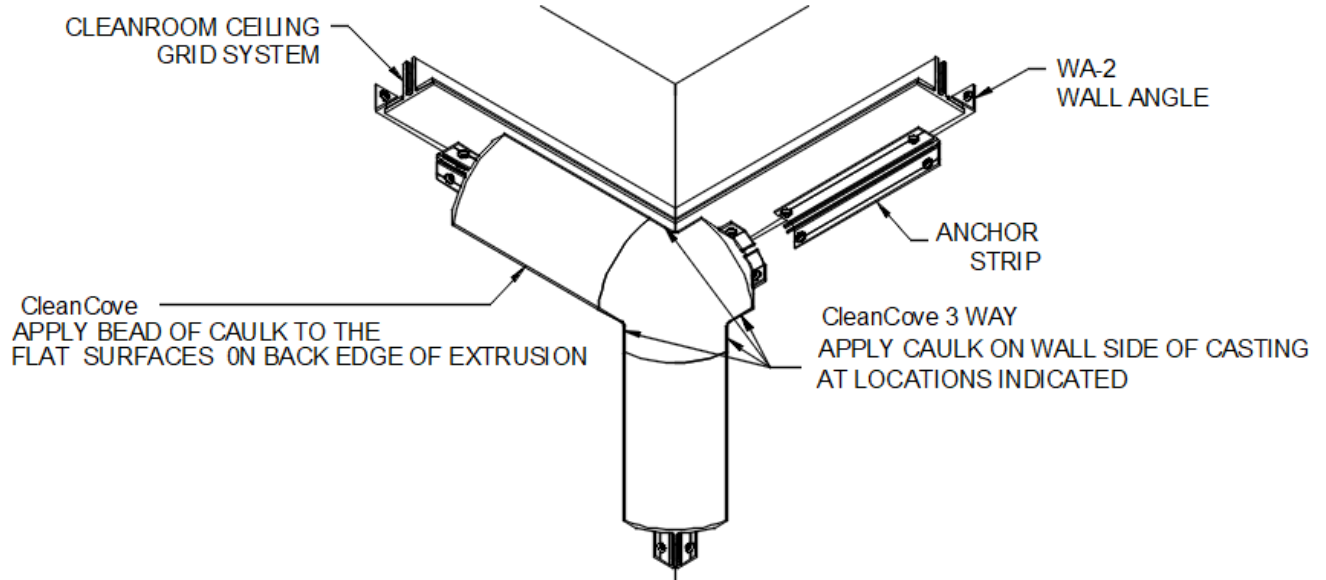
**Step 3:**

Position the CleanCove 3-way inside corner in the wall to ceiling corner. Attach CleanCove corner to the wall by using flat head screws through the holes in the tabs (2 per leg).

**Step 4:**

Wipe off excess caulk from edges of installed corner assembly. Install all corner assemblies in the room.

**Figure A:**



**Step: 5**

Measure the distance between finished corners to determine cut length of straight pieces.

**Step: 6**

Mask area to be cut with masking or painters tape to protect finish before cutting. Use a saw with fine tooth carbide tip blade. Cut-to-fit CleanCove extrusions to the appropriate length to form a continuous cove, abutting the ends of the 3-way corner assembly legs.

**Step 7:**

Apply caulk to the flat surfaces on the back edge and ends of the straight CleanCove extrusions.

**Step 8:**

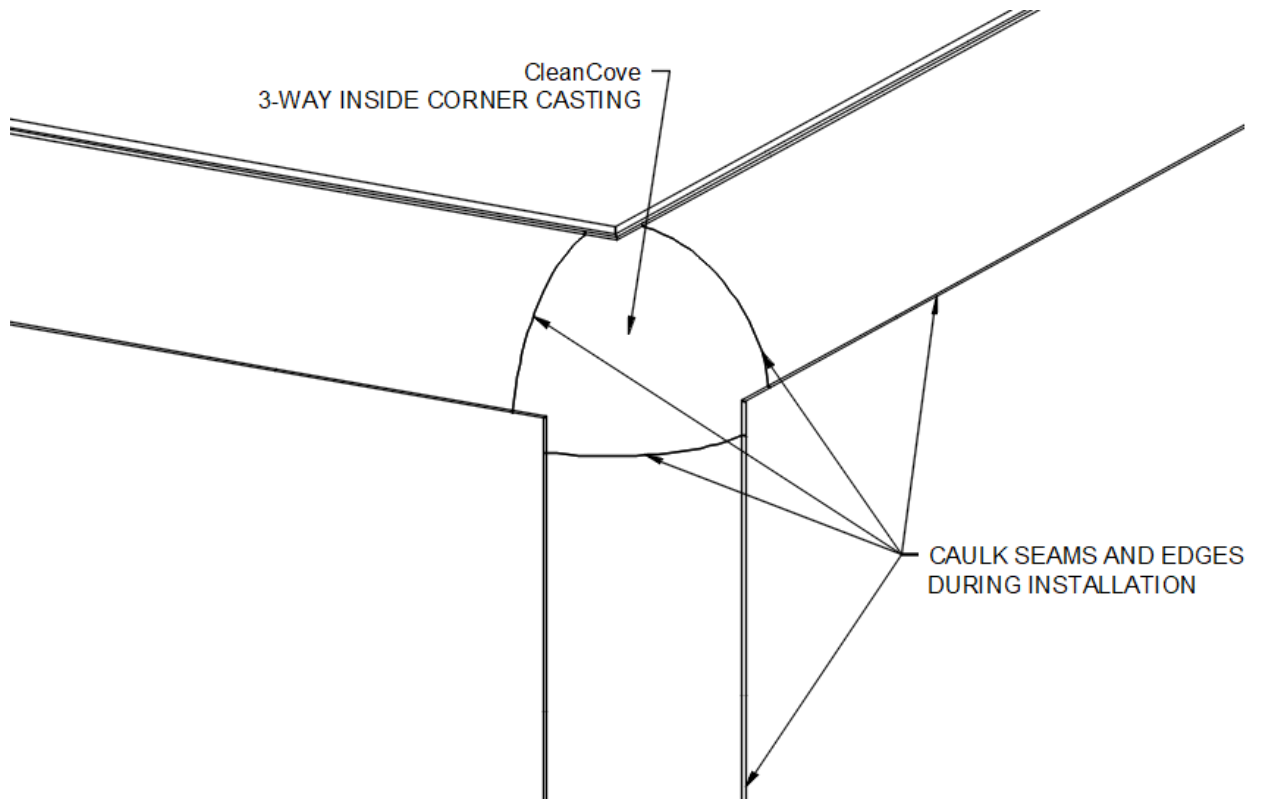
Position the CleanCove so that the ribbed spines on the back of the extrusion can snap into the serrated boss on the anchor strips.

### **Step 9:**

Press the CleanCove firmly and securely into the vinyl anchor strip serrated boss.

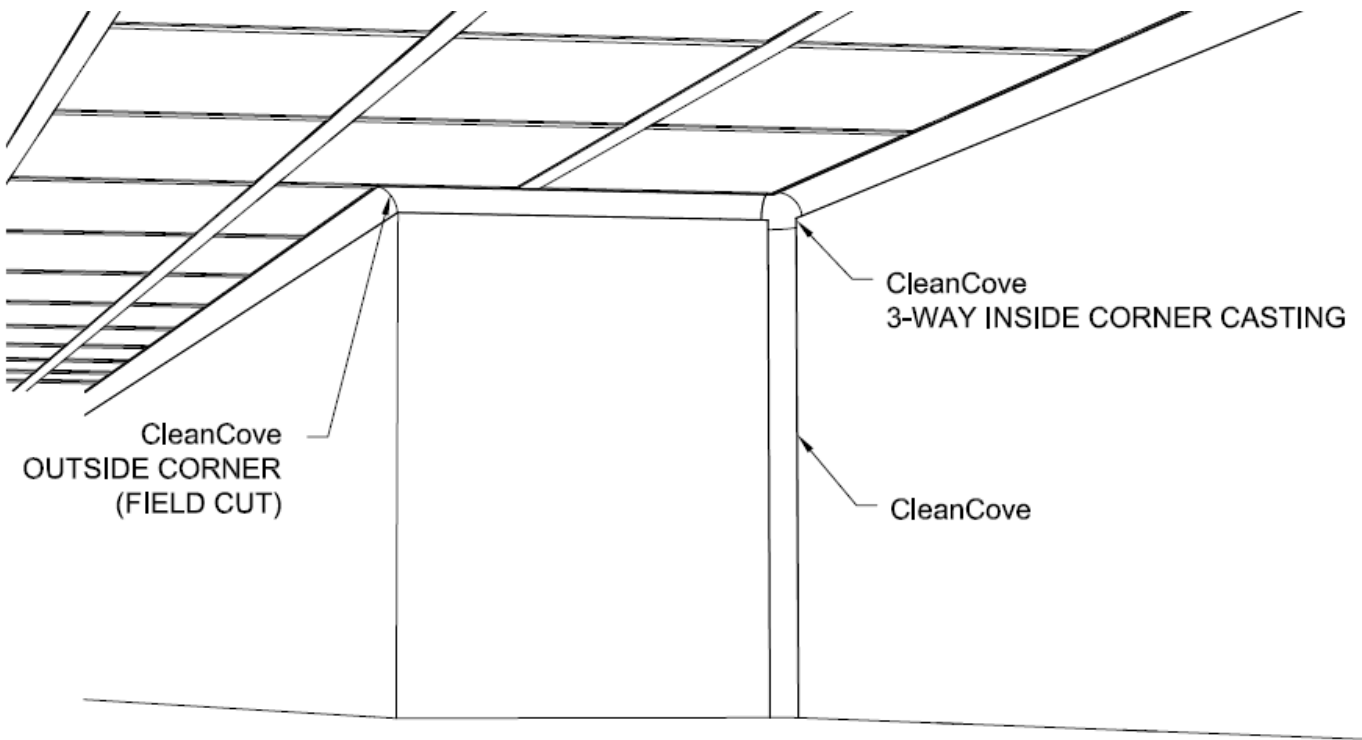
### **Step 10:**

Caulk the butt splice seam and wipe off excess caulk from the CleanCove edges, taking care to leave a smooth seam, free of imperfections.

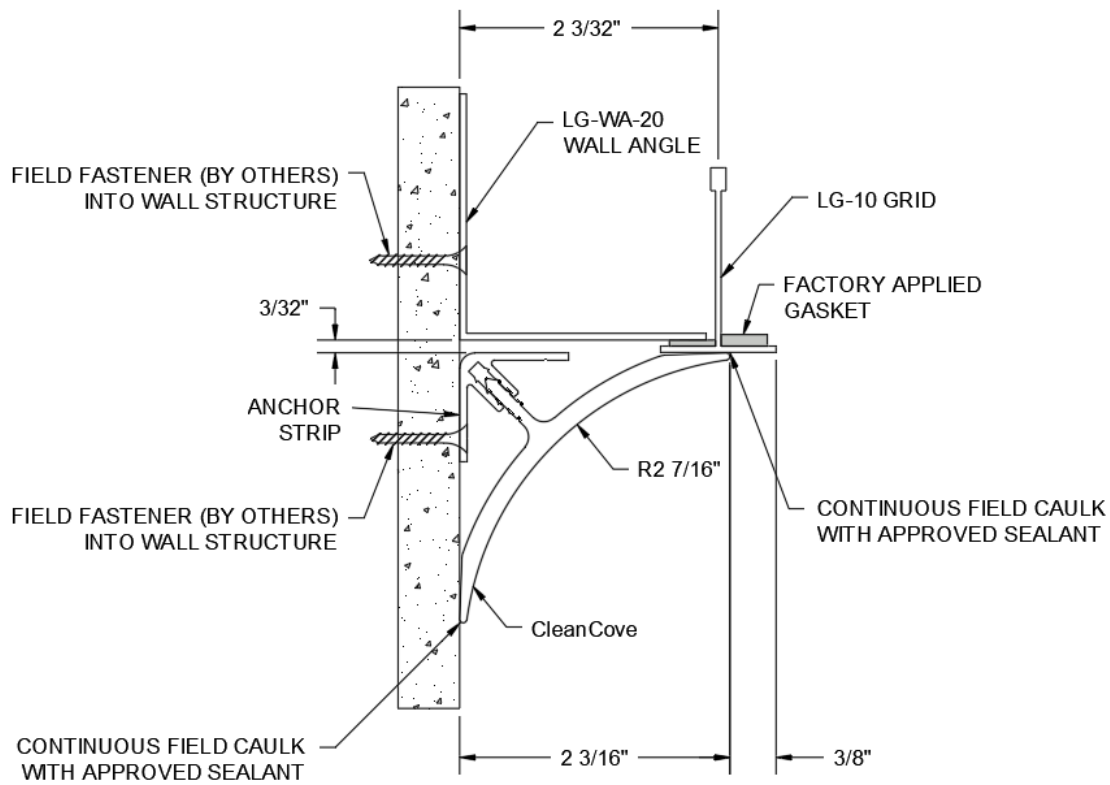


## **PART 3 - ILLUSTRATIONS**

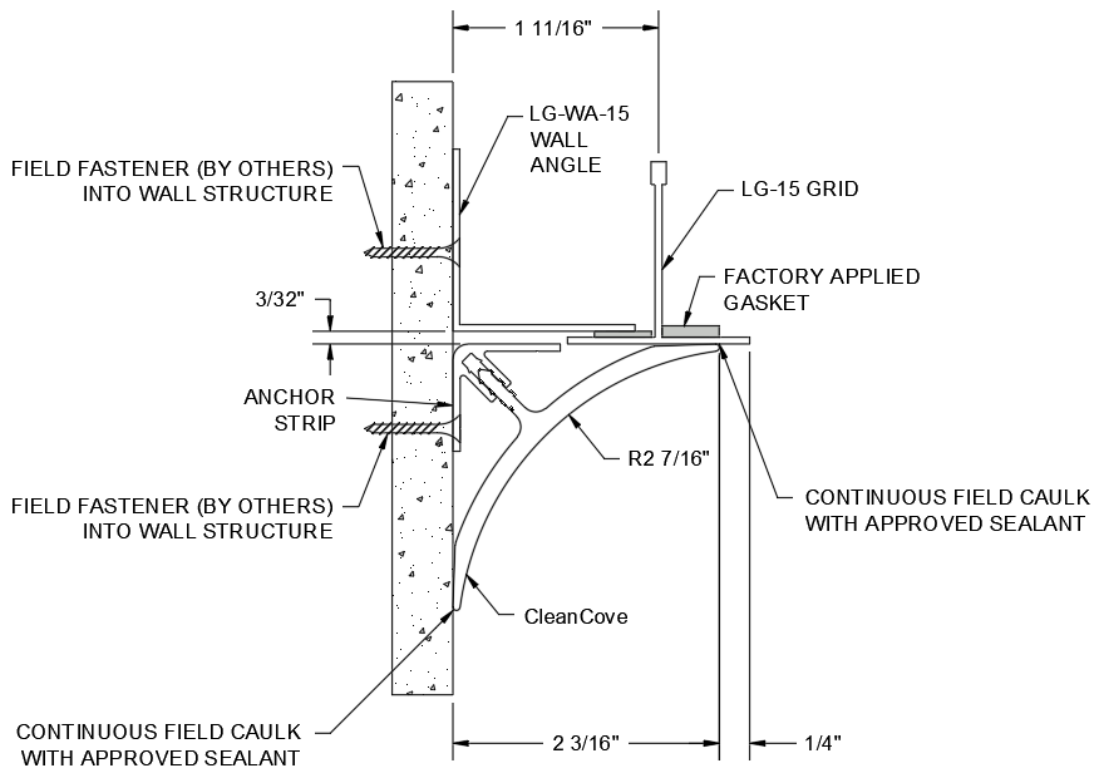
**Figure B:** *TYPICAL CEILING TRANSITION (DS-20 shown)*



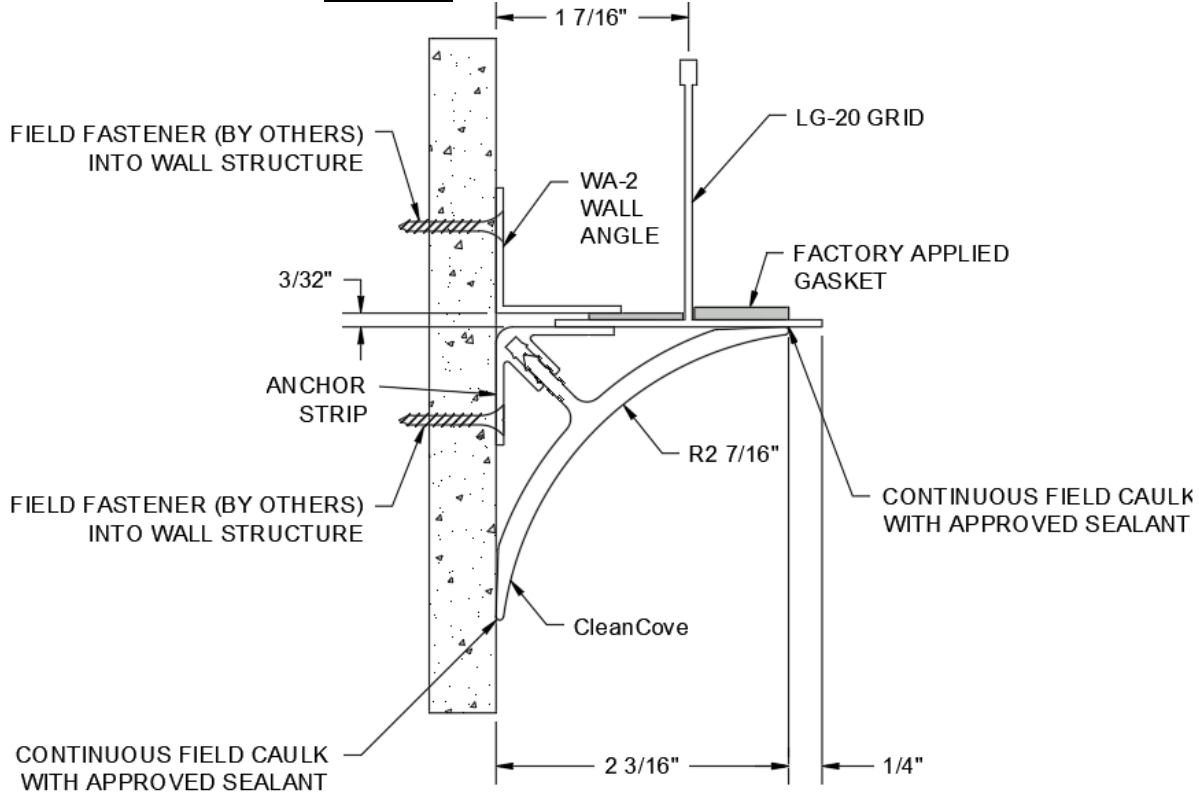
**Figure C: LG10 CEILING TRANSITION**



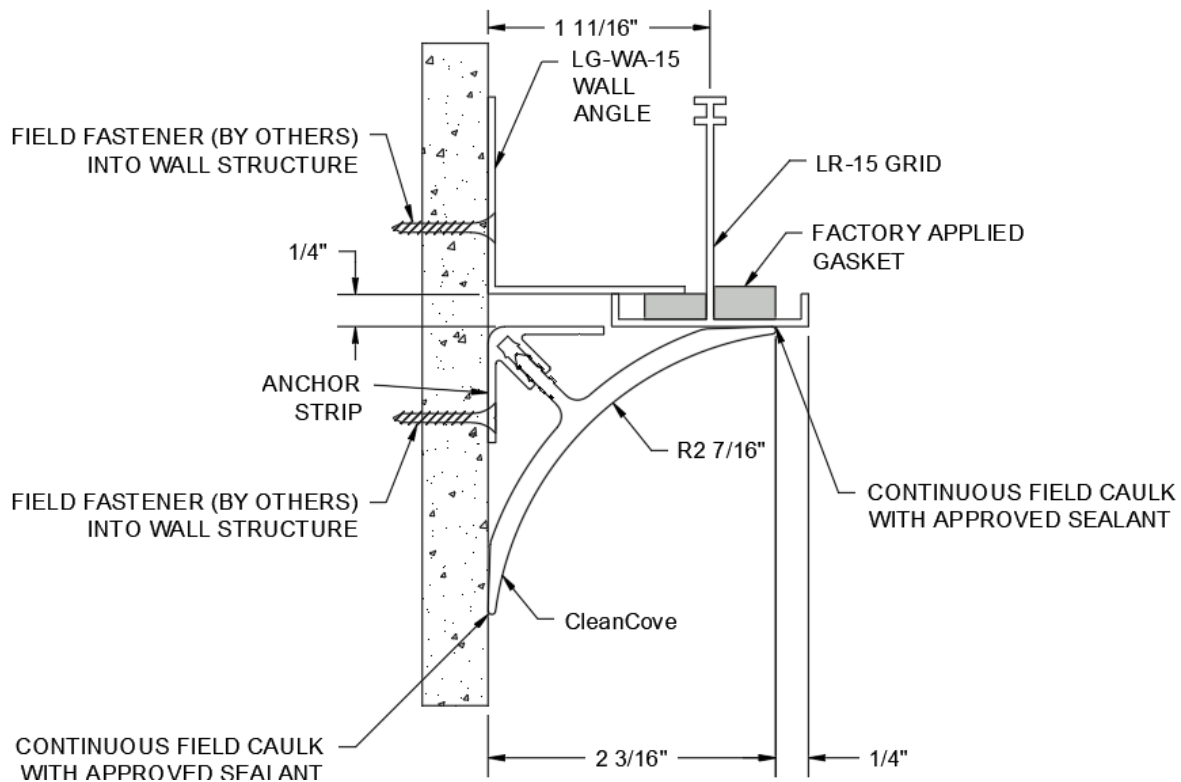
**Figure D: LG15 CEILING TRANSITION**



**Figure E: LG20CEILING TRANSITION**

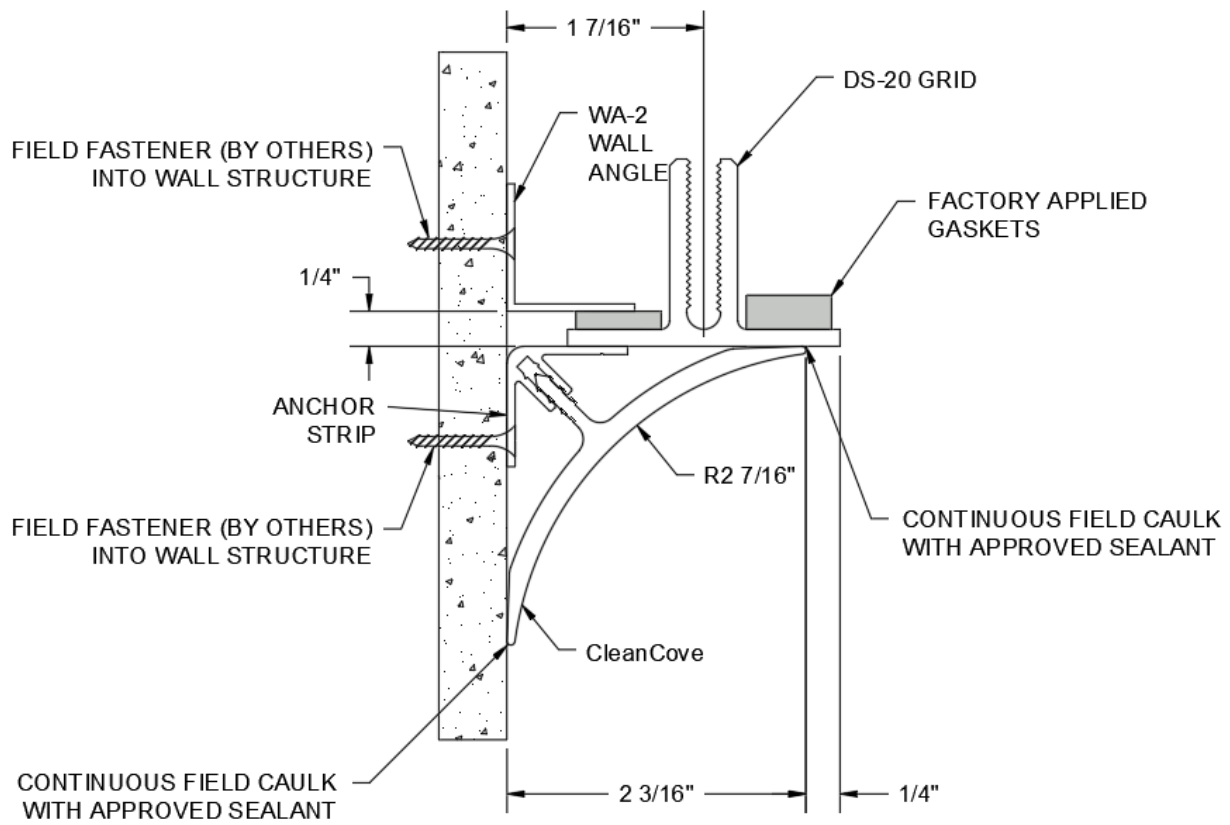


**Figure F: LR CEILING TRANSITION**





**Figure G: DS20 CEILING TRANSITION**





5023 HAZEL JONES ROAD  
BOSSIER CITY, LA 71111  
800-747-8954

WWW.GORDON-INC.COM  
SALES@GORDON-INC.COM

