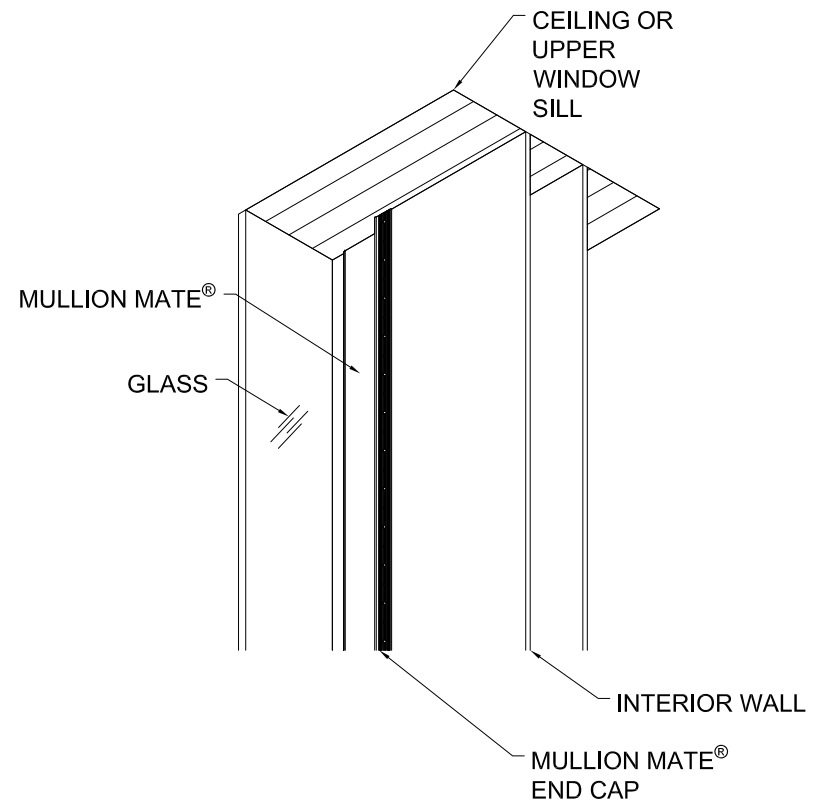
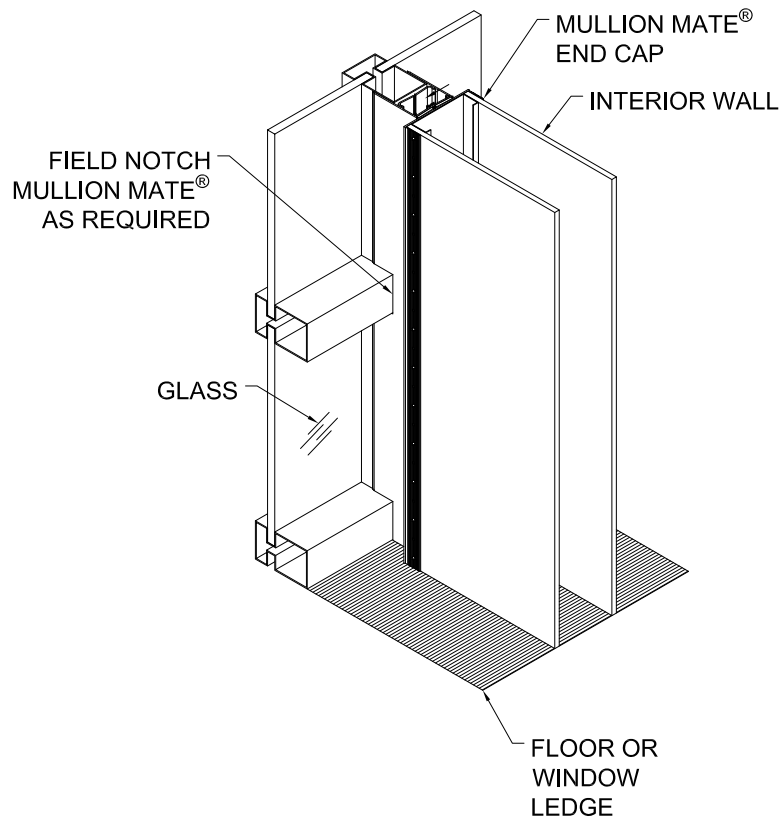


DETAIL AT FLOOR

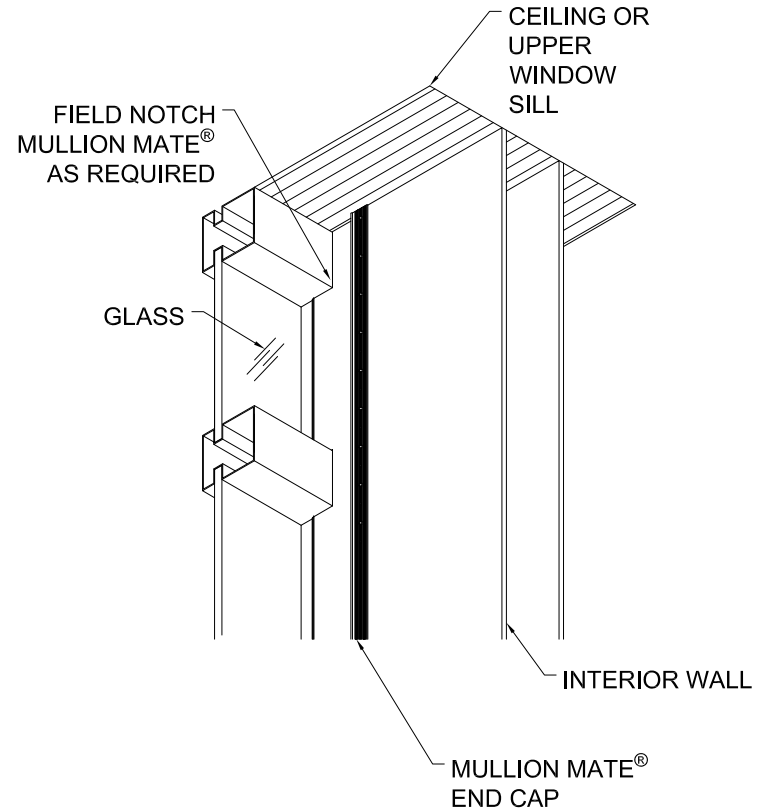


DETAIL AT CEILING

MULLION MATE SERIES 20 IS PATENT PENDING



DETAIL AT FLOOR



DETAIL AT CEILING

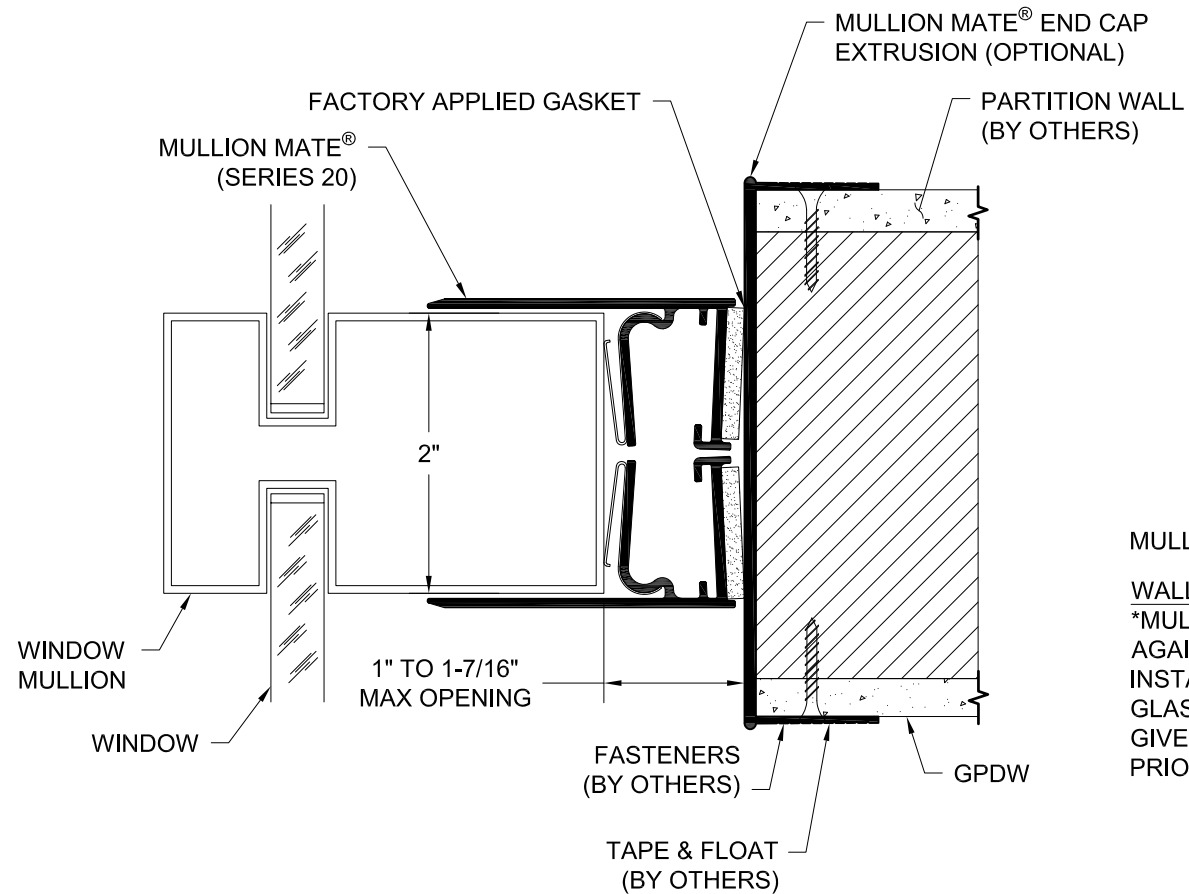
NOTE: FACTORY NOTCHING IS AVAILABLE.
(CONTACT FACTORY)

MULLION MATE SERIES 20 IS PATENT PENDING

GORDON®
ARCHITECTURAL+ENGINEERED SOLUTIONS

5023 Hazel Jones Rd.
Bossier City, LA 71111
800.747.8954
MULLIONMATE.COM
sales@mullionmate.com

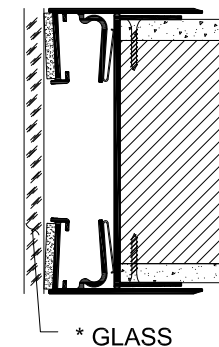
**PARTITION GAP CLOSURES
MULLION MATE - SERIES 20
WALL-TO-GLASS (NOTCHED) ISO VIEW**

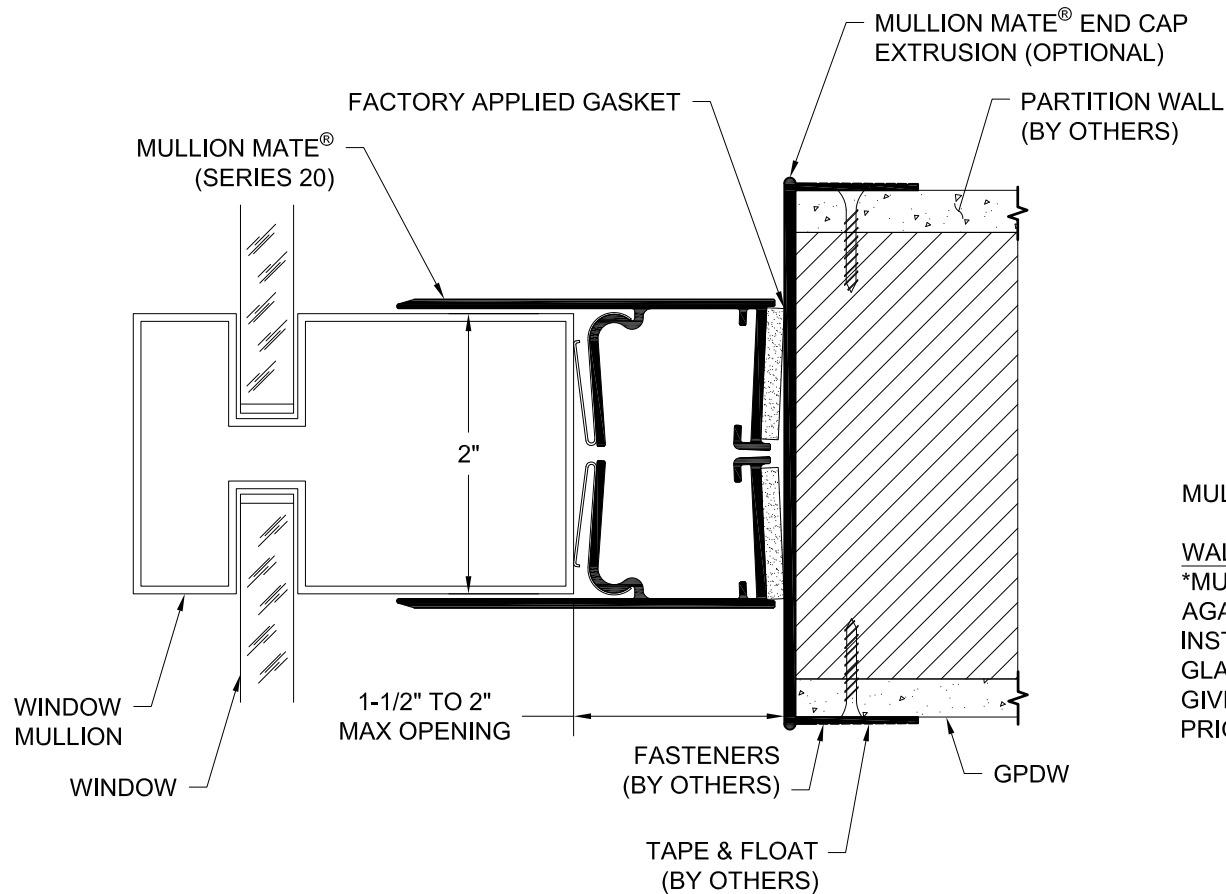


MULLION MATE SERIES 20 IS PATENT PENDING

WALL-TO-GLASS APPLICATION

*MULLION MATE® CAN BE INSTALLED AGAINST MINIMUM 1/8" THICK GLASS. INSTALL THE GASKET AGAINST THE GLASS SIDE FIRST. CARE SHOULD BE GIVEN TO PROPERLY POSITION GASKET PRIOR TO CONTACTING GLASS.

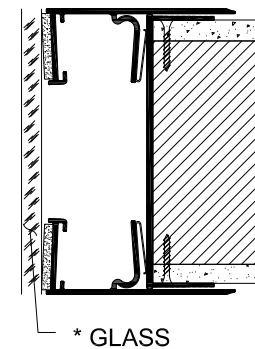




MULLION MATE SERIES 20 IS PATENT PENDING

WALL-TO-GLASS APPLICATION

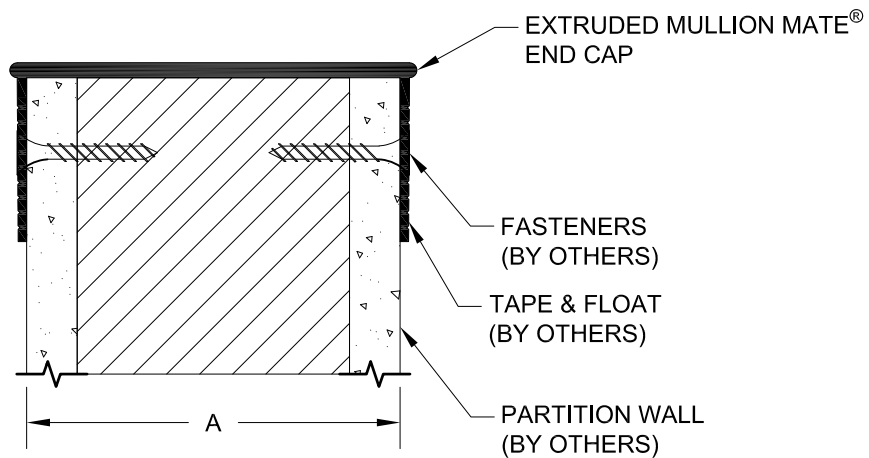
*MULLION MATE® CAN BE INSTALLED AGAINST MINIMUM 1/8" THICK GLASS. INSTALL THE GASKET AGAINST THE GLASS SIDE FIRST. CARE SHOULD BE GIVEN TO PROPERLY POSITION GASKET PRIOR TO CONTACTING GLASS.



GORDON®
ARCHITECTURAL+ENGINEERED SOLUTIONS

5023 Hazel Jones Rd.
Bossier City, LA 71111
800.747.8954
MULLIONMATE.COM
sales@mullionmate.com

PARTITION GAP CLOSURES
MULLION MATE - SERIES 20
MM1.5 SECTION



ALUMINUM MULLION MATE® END CAPS

PART #	"A"
MMEC-375	3-3/4"
MMEC-487	4-7/8"
MMECBF-518	5-1/8"
MMECBF-514	5-1/4"
MMECBF-512	5-1/2"
MMEC-600	6"
MMECBF-618	6-1/8"
MMEC-725	7-1/4"
MMECBF-812	8-1/2"

* CONTACT FACTORY FOR OTHER SIZE OPTIONS