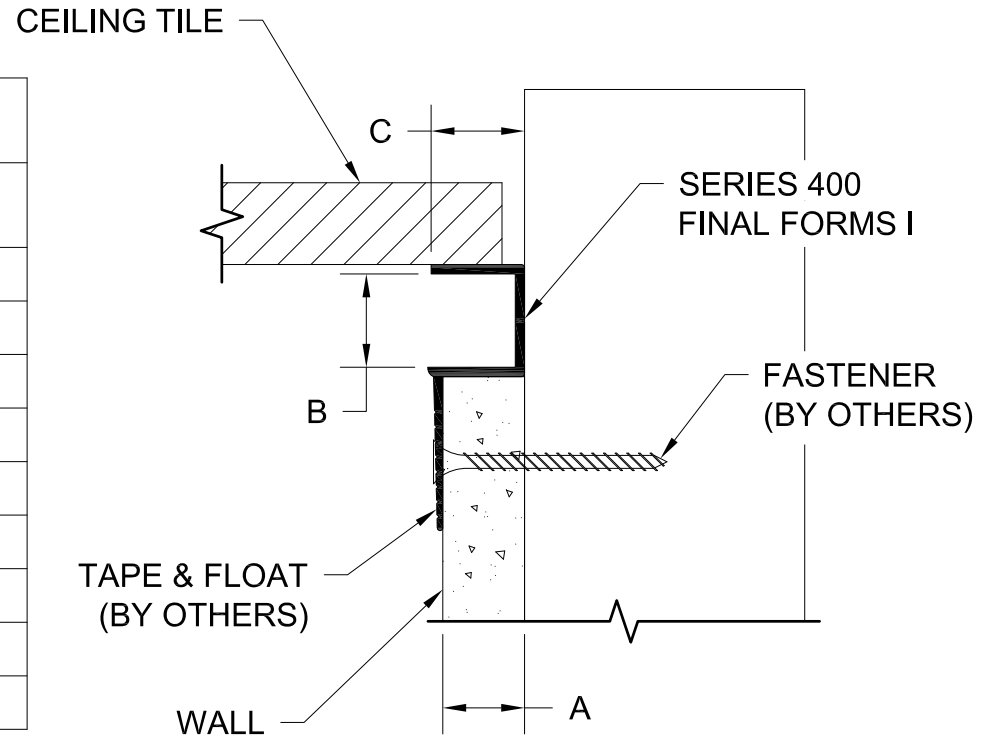


| SERIES 400 | | | |
|----------------------------|-------|--------|-------|
| PART # | "A" | "B" | "C" |
| 412-1/2* | 7/16" | 1/2" | 1/2" |
| 434-1/2 | 7/16" | 3/4" | 3/4"* |
| 410-1/2 | 7/16" | 1" | 1/2" |
| 412-5/8* | 5/8" | 1/2" | 5/8" |
| 458-5/8 | 5/8" | 5/8" | 5/8" |
| 434-5/8* | 5/8" | 3/4" | 5/8" |
| 410-5/8 | 5/8" | 1" | 5/8" |
| 415-5/8 | 5/8" | 1-1/2" | 5/8" |
| *EXTRUDED INSERT AVAILABLE | | | |



GORDON[®]
ARCHITECTURAL+ENGINEERED SOLUTIONS

5023 Hazel Jones Rd.
Bossier City, LA 71111
800.747.8954
GORDON-INC.COM
sales@gordon-inc.com

TRIMS & ESSENTIALS
DRYWALL - FINAL FORMS I
SERIES 400