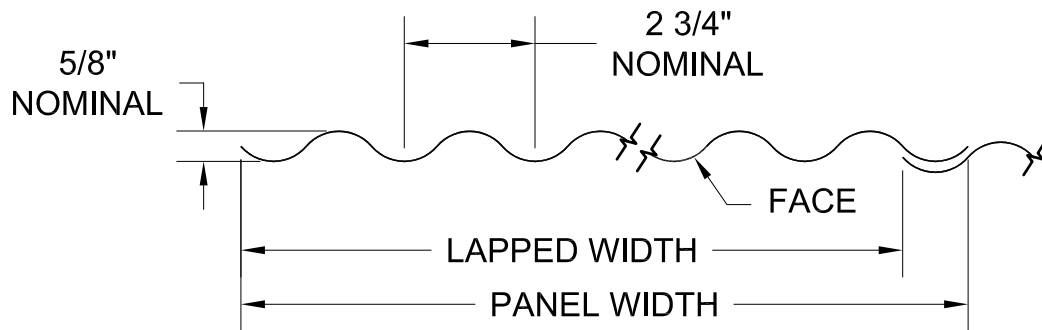


GORDON®
ARCHITECTURAL+ENGINEERED SOLUTIONS

5023 Hazel Jones Rd.
Bossier City, LA 71111
800.747.8954
GORDON-INC.COM
sales@gordon-inc.com

INDUSTRIAL WALL SYSTEMS
CORRUGATED - PANELS - VERTICAL
ISOMETRIC VIEW



NOMINAL DIMENSIONS	
LAPPED WIDTH	PANEL WIDTH
40 3/8"	42"
51 5/8"	52 3/4"

ALUMINUM

.032" ALUMINUM MAXIMUM LENGTH: 144"

STEEL

MAXIMUM LENGTH: 144"

AVAILABLE MATERIAL	
ALUMINUM	STEEL
.032"	22 GAUGE
	24 GAUGE
	26 GAUGE

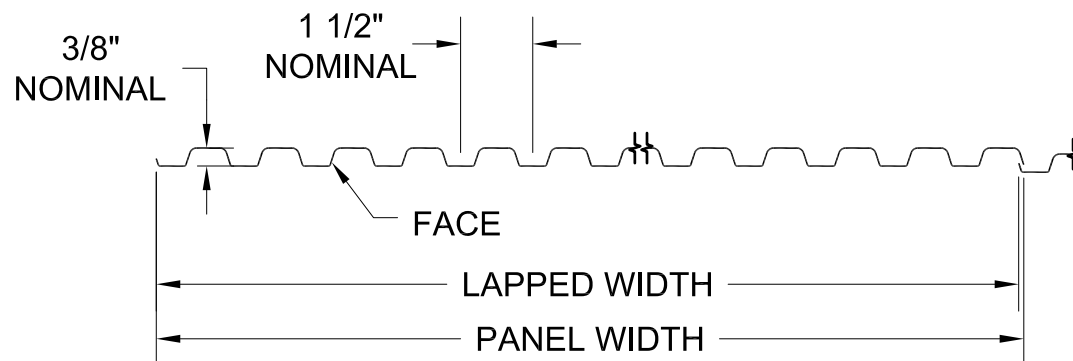
NOTE: ALL DIMENSIONS ARE NOMINAL AND WILL VARY WITH DIFFERENT THICKNESSES AND TYPES OF MATERIAL.

STANDARD FACTORY TOLERANCES:

LENGTH: $\pm 5/32$ "

WIDTH: $\pm 3/16$ "

DIAGONAL: $\pm 3/16$ "



ALUMINUM / STEEL

MAXIMUM LENGTH: 120" (SIDE LAP CONDITIONS)

MAXIMUM LENGTH: 96" (END LAP CONDITIONS)

NOMINAL DIMENSIONS	
LAPPED WIDTH	PANEL WIDTH
39"	39 1/4"
49 7/8"	50"

AVAILABLE MATERIAL	
ALUMINUM	STEEL
.032"	24 GAUGE
	26 GAUGE

NOTE: ALL DIMENSIONS ARE NOMINAL AND WILL VARY WITH DIFFERENT THICKNESSES AND TYPES OF MATERIAL.

STANDARD FACTORY TOLERANCES:

LENGTH: $\pm 5/32$ "

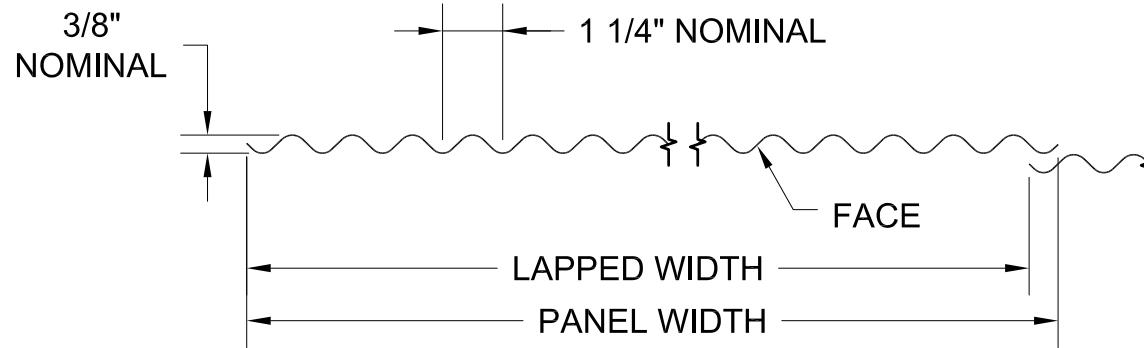
WIDTH: $\pm 3/16$ "

DIAGONAL: $\pm 3/16$ "

GORDON®
ARCHITECTURAL+ENGINEERED SOLUTIONS

5023 Hazel Jones Rd.
Bossier City, LA 71111
800.747.8954
GORDON-INC.COM
sales@gordon-inc.com

INDUSTRIAL WALL SYSTEMS
CORRUGATED - PANELS - VERTICAL
PATTERN "F" PANELS



ALUMINUM / STEEL
 MAXIMUM LENGTH: 144" (SIDE LAP CONDITIONS)
 MAXIMUM LENGTH: 96" (END LAP CONDITIONS)

NOMINAL DIMENSIONS	
LAPPED WIDTH	PANEL WIDTH
40 1/2"	41 5/8"
51"	52"

AVAILABLE MATERIAL	
ALUMINUM	STEEL
.032"	22 GAUGE
	24 GAUGE
	26 GAUGE

NOTE: ALL DIMENSIONS ARE NOMINAL AND WILL VARY WITH
 DIFFERENT THICKNESSES AND TYPES OF MATERIAL.

STANDARD FACTORY TOLERANCES:

LENGTH: $\pm 5/32$ "
 WIDTH: $\pm 3/16$ "
 DIAGONAL: $\pm 3/16$ "

