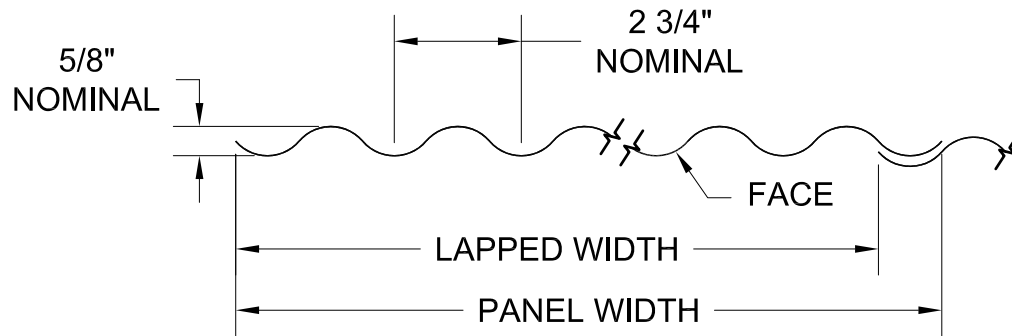


**GORDON**<sup>®</sup>  
ARCHITECTURAL+ENGINEERED SOLUTIONS

5023 Hazel Jones Rd.  
Bossier City, LA 71111  
800.747.8954  
GORDON-INC.COM  
sales@gordon-inc.com

INDUSTRIAL WALL SYSTEMS  
CORRUGATED - PANELS - HORIZONTAL  
ISOMETRIC VIEW



NOMINAL DIMENSIONS	
LAPPED WIDTH	PANEL WIDTH
40 3/8"	42"
51 5/8"	52 3/4"

**ALUMINUM**  
 .032" ALUMINUM MAXIMUM LENGTH: 144"

**STEEL**  
 MAXIMUM LENGTH: 144"

AVAILABLE MATERIAL	
ALUMINUM	STEEL
.032"	22 GAUGE
	24 GAUGE
	26 GAUGE

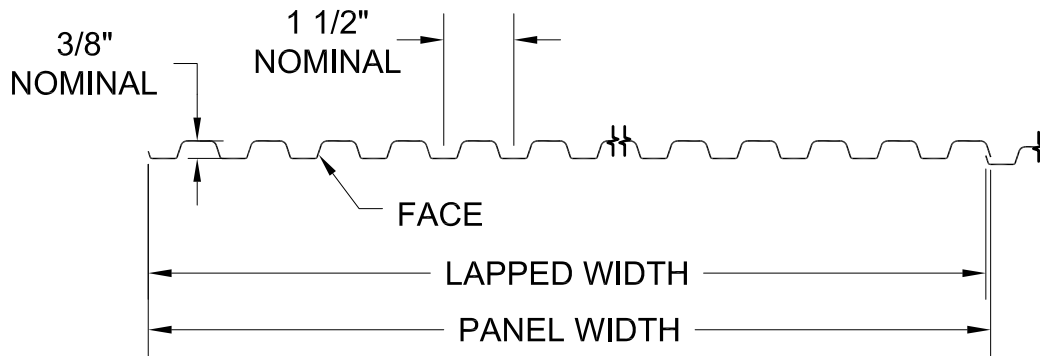
NOTE: ALL DIMENSIONS ARE NOMINAL AND WILL VARY WITH DIFFERENT THICKNESSES AND TYPES OF MATERIAL.

STANDARD FACTORY TOLERANCES:

LENGTH: ± 5/32"

WIDTH: ± 3/16"

DIAGONAL: ± 3/16"



**ALUMINUM / STEEL**

MAXIMUM LENGTH: 144" (SIDE LAP CONDITIONS)

MAXIMUM LENGTH: 96" (END LAP CONDITIONS)

NOMINAL DIMENSIONS	
LAPPED WIDTH	PANEL WIDTH
39"	39 1/4"
49 7/8"	50"

AVAILABLE MATERIAL	
ALUMINUM	STEEL
.032"	24 GAUGE
	26 GAUGE

NOTE: ALL DIMENSIONS ARE NOMINAL AND WILL VARY WITH DIFFERENT THICKNESSES AND TYPES OF MATERIAL.

STANDARD FACTORY TOLERANCES:

LENGTH:  $\pm 5/32$ "

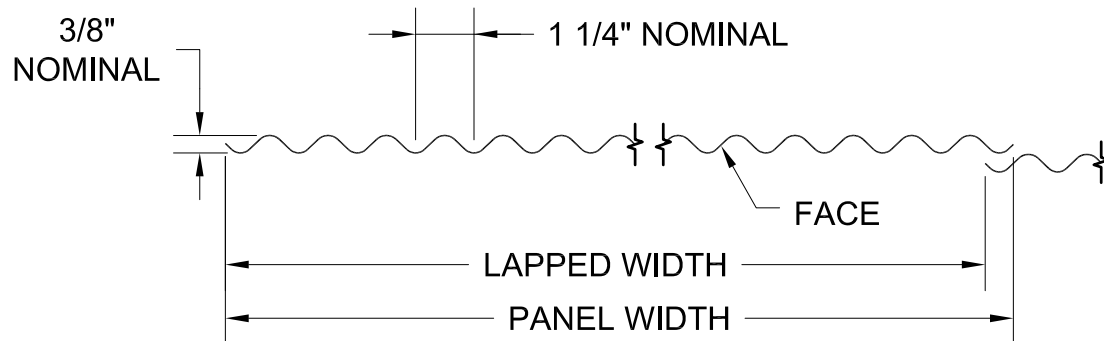
WIDTH:  $\pm 3/16$ "

DIAGONAL:  $\pm 3/16$ "

**GORDON**<sup>®</sup>  
ARCHITECTURAL+ENGINEERED SOLUTIONS

5023 Hazel Jones Rd.  
Bossier City, LA 71111  
800.747.8954  
GORDON-INC.COM  
sales@gordon-inc.com

**INDUSTRIAL WALL SYSTEMS  
CORRUGATED - PANELS - HORIZONTAL  
PATTERN "F" PANELS**



NOMINAL DIMENSIONS	
LAPPED WIDTH	PANEL WIDTH
40 1/2"	41 5/8"
51"	52"

AVAILABLE MATERIAL	
ALUMINUM	STEEL
.032"	22 GAUGE
	24 GAUGE
	26 GAUGE

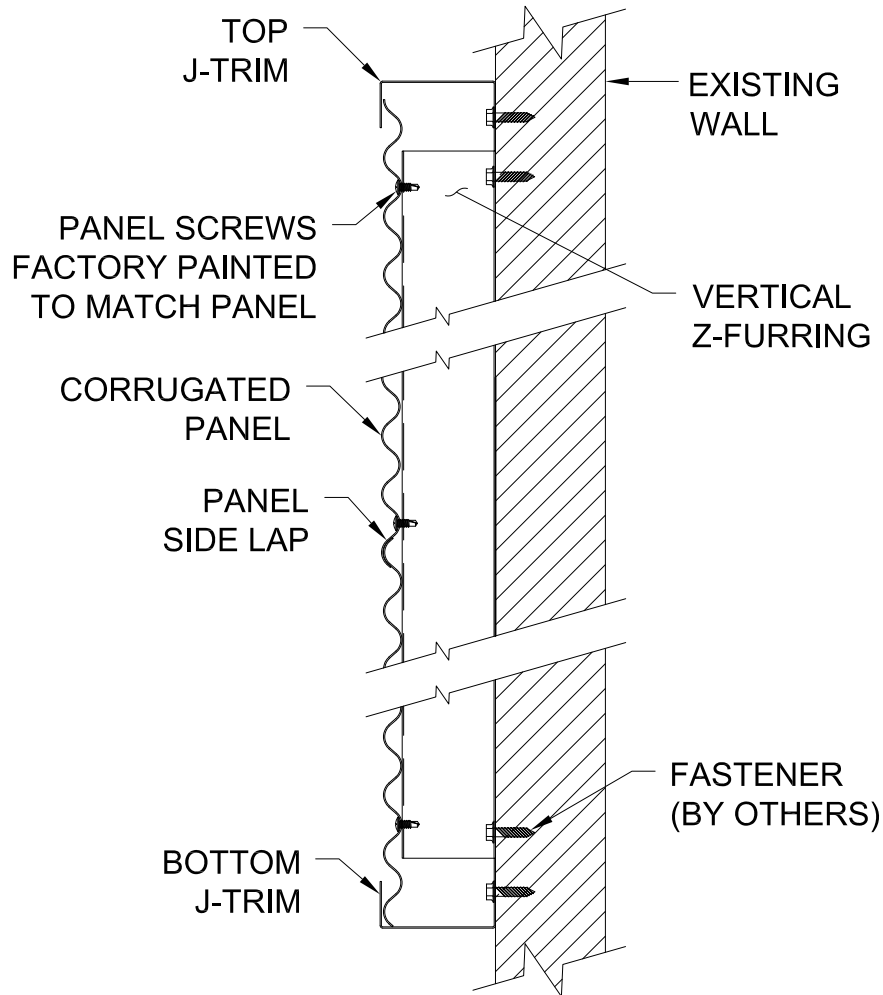
**ALUMINUM / STEEL**

MAXIMUM LENGTH: 144" (SIDE LAP CONDITIONS)  
 MAXIMUM LENGTH: 96" (END LAP CONDITIONS)

NOTE: ALL DIMENSIONS ARE NOMINAL AND WILL VARY WITH DIFFERENT THICKNESSES AND TYPES OF MATERIAL.

STANDARD FACTORY TOLERANCES:

- LENGTH: ± 5/32"
- WIDTH: ± 3/16"
- DIAGONAL: ± 3/16"



INDUSTRIAL WALL SYSTEMS  
 CORRUGATED - PANELS - HORIZONTAL  
 WALL SECTION

