

PATTERN
"A"

PATTERN
"B"

PATTERN
"C"

PATTERN
"D"

PATTERN
"E"

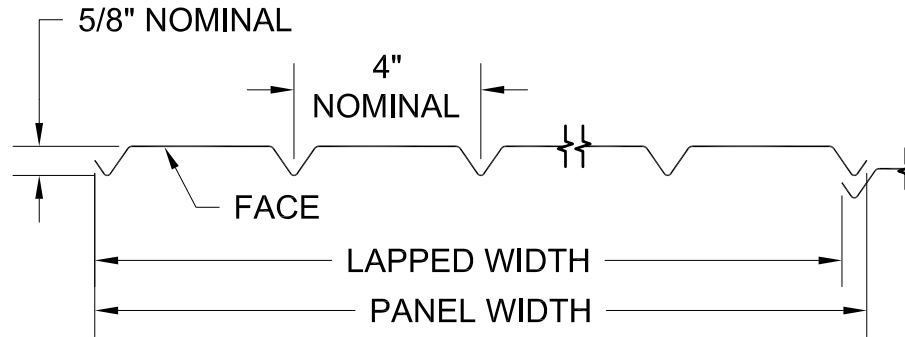
PATTERN
"F"

PATTERN
"J"

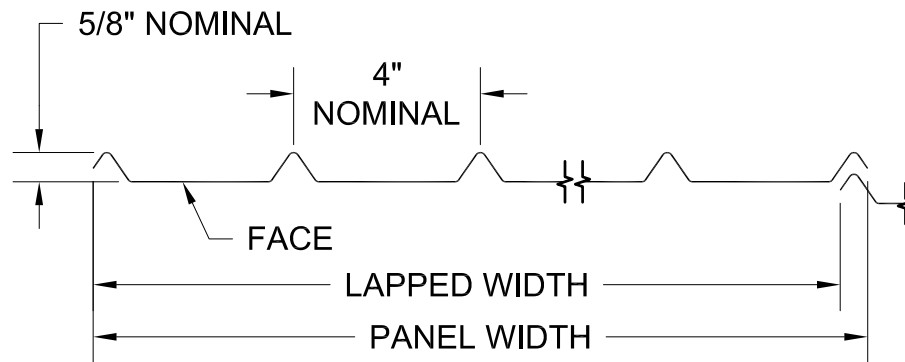
GORDON[®]
ARCHITECTURAL+ENGINEERED SOLUTIONS

5023 Hazel Jones Rd.
Bossier City, LA 71111
800.747.8954
GORDON-INC.COM
sales@gordon-inc.com

WALLS / CLADDINGS
CORRUGATED - PANELS - HORIZONTAL
ISOMETRIC VIEW



AO - ALUMINUM / STEEL
 MAXIMUM LENGTH: 120"



AI - ALUMINUM / STEEL
 MAXIMUM LENGTH: 120"

NOMINAL DIMENSIONS	
LAPPED WIDTH	PANEL WIDTH
40 3/4"	41 1/2"
51 1/4"	52"

AVAILABLE MATERIAL	
ALUMINUM	STEEL
.032"	24 GAUGE
	26 GAUGE

NOTE: ALL DIMENSIONS ARE NOMINAL AND WILL VARY WITH DIFFERENT THICKNESSES AND TYPES OF MATERIAL.

STANDARD FACTORY TOLERANCES:

LENGTH: ± 5/32"

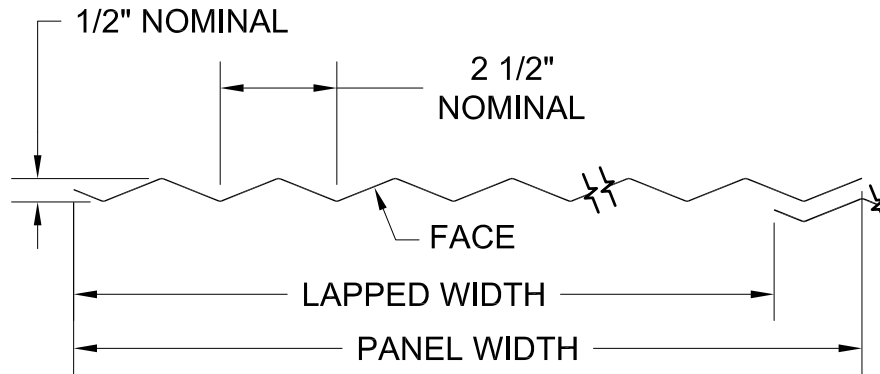
WIDTH: ± 3/16"

DIAGONAL: ± 3/16"

GORDON[®]
 ARCHITECTURAL+ENGINEERED SOLUTIONS

5023 Hazel Jones Rd.
 Bossier City, LA 71111
 800.747.8954
 GORDON-INC.COM
 sales@gordon-inc.com

WALLS / CLADDINGS
CORRUGATED - PANELS - HORIZONTAL
PATTERN "A" PANELS



ALUMINUM / STEEL
 MAXIMUM LENGTH: 120"

NOMINAL DIMENSIONS	
LAPPED WIDTH	PANEL WIDTH
42 3/4"	44 3/4"
54 3/4"	55 3/4"

AVAILABLE MATERIAL	
ALUMINUM	STEEL
.032"	22 GAUGE
	24 GAUGE
	26 GAUGE

NOTE: ALL DIMENSIONS ARE NOMINAL AND WILL VARY WITH DIFFERENT THICKNESSES AND TYPES OF MATERIAL.

STANDARD FACTORY TOLERANCES:

LENGTH: ± 5/32"

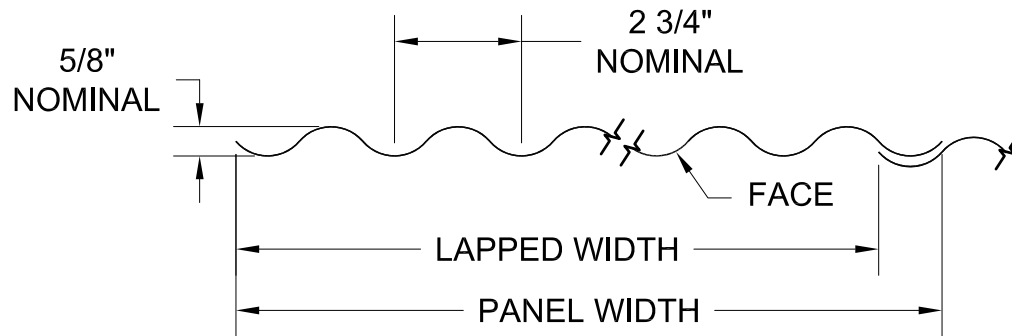
WIDTH: ± 3/16"

DIAGONAL: ± 3/16"

GORDON®
 ARCHITECTURAL+ENGINEERED SOLUTIONS

5023 Hazel Jones Rd.
 Bossier City, LA 71111
 800.747.8954
 GORDON-INC.COM
 sales@gordon-inc.com

WALLS / CLADDINGS
CORRUGATED - PANELS - HORIZONTAL
PATTERN "B" PANELS



NOMINAL DIMENSIONS	
LAPPED WIDTH	PANEL WIDTH
40 3/8"	42"
51 5/8"	52 3/4"

ALUMINUM

.032" ALUMINUM MAXIMUM LENGTH: 144"
 .063" ALUMINUM MAXIMUM LENGTH: 120"

STEEL

MAXIMUM LENGTH: 144"

AVAILABLE MATERIAL	
ALUMINUM	STEEL
.032"	22 GAUGE
.063"	24 GAUGE
	26 GAUGE

NOTE: ALL DIMENSIONS ARE NOMINAL AND WILL VARY WITH DIFFERENT THICKNESSES AND TYPES OF MATERIAL.

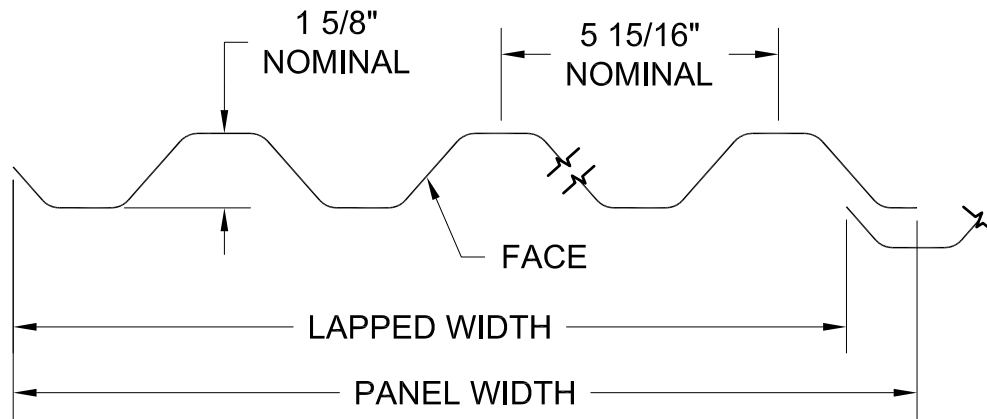
STANDARD FACTORY TOLERANCES:

- LENGTH: ± 5/32"
- WIDTH: ± 3/16"
- DIAGONAL: ± 3/16"



5023 Hazel Jones Rd.
 Bossier City, LA 71111
 800.747.8954
 GORDON-INC.COM
 sales@gordon-inc.com

**WALLS / CLADDINGS
 CORRUGATED - PANELS - HORIZONTAL
 PATTERN "C" PANELS**



ALUMINUM / STEEL
 MAXIMUM LENGTH: 120"

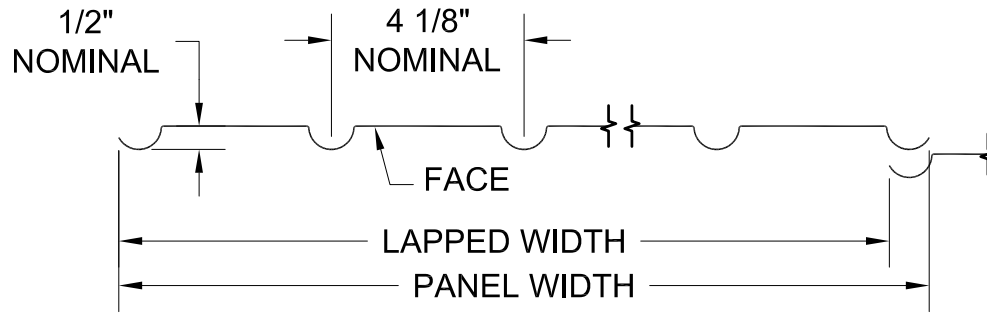
NOMINAL DIMENSIONS	
LAPPED WIDTH	PANEL WIDTH
47 1/2"	49 1/2"
38 5/8"	39 1/2"

AVAILABLE MATERIAL	
ALUMINUM	STEEL
.032"	22 GAUGE
	24 GAUGE
	26 GAUGE

NOTE: ALL DIMENSIONS ARE NOMINAL AND WILL VARY WITH DIFFERENT THICKNESSES AND TYPES OF MATERIAL.

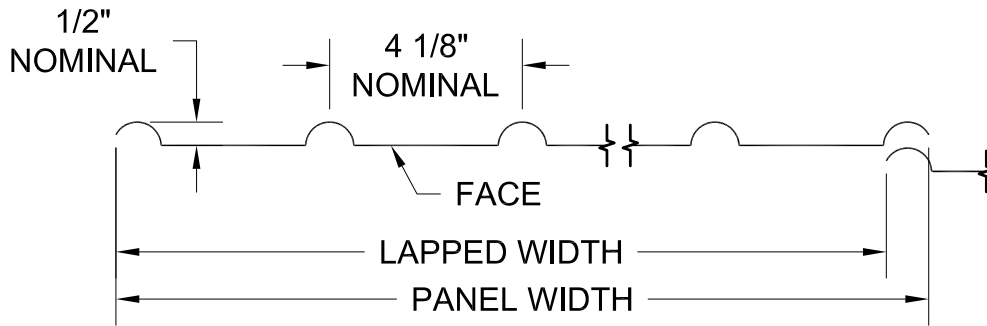
STANDARD FACTORY TOLERANCES:

- LENGTH: ± 5/32"
- WIDTH: ± 3/16"
- DIAGONAL: ± 3/16"



EO - ALUMINUM / STEEL
 MAXIMUM LENGTH: 120"

NOMINAL DIMENSIONS	
LAPPED WIDTH	PANEL WIDTH
53 3/4"	54 3/4"



EI - ALUMINUM / STEEL
 MAXIMUM LENGTH: 120"

AVAILABLE MATERIAL	
ALUMINUM	STEEL
.032"	24 GAUGE
	26 GAUGE

NOTE: ALL DIMENSIONS ARE NOMINAL AND WILL VARY WITH DIFFERENT THICKNESSES AND TYPES OF MATERIAL.

STANDARD FACTORY TOLERANCES:

LENGTH: $\pm 5/32$ "

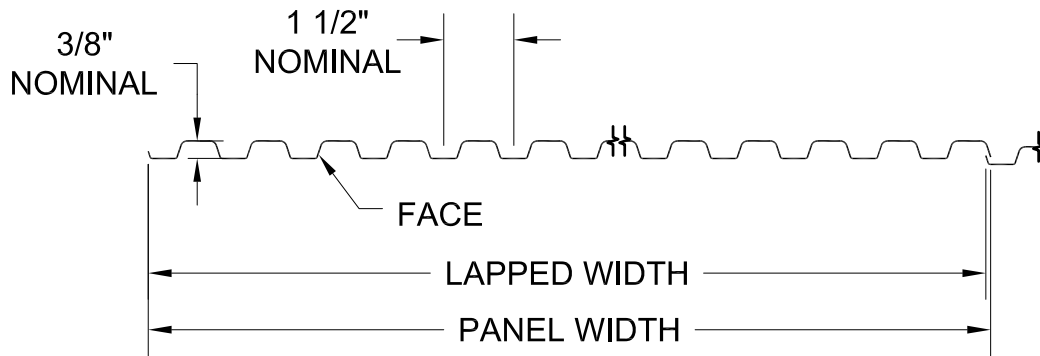
WIDTH: $\pm 3/16$ "

DIAGONAL: $\pm 3/16$ "



5023 Hazel Jones Rd.
 Bossier City, LA 71111
 800.747.8954
 GORDON-INC.COM
 sales@gordon-inc.com

WALLS / CLADDINGS
CORRUGATED - PANELS - HORIZONTAL
PATTERN "E" PANELS



ALUMINUM / STEEL
 MAXIMUM LENGTH: 144"

NOMINAL DIMENSIONS	
LAPPED WIDTH	PANEL WIDTH
39"	39 1/4"
49 7/8"	50"

AVAILABLE MATERIAL	
ALUMINUM	STEEL
.032"	24 GAUGE
	26 GAUGE

NOTE: ALL DIMENSIONS ARE NOMINAL AND WILL VARY WITH DIFFERENT THICKNESSES AND TYPES OF MATERIAL.

STANDARD FACTORY TOLERANCES:

LENGTH: $\pm 5/32$ "

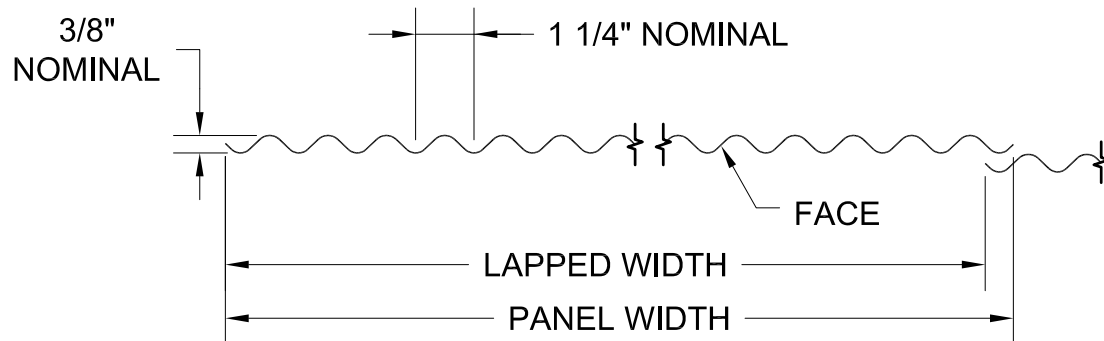
WIDTH: $\pm 3/16$ "

DIAGONAL: $\pm 3/16$ "

GORDON[®]
 ARCHITECTURAL+ENGINEERED SOLUTIONS

5023 Hazel Jones Rd.
 Bossier City, LA 71111
 800.747.8954
 GORDON-INC.COM
 sales@gordon-inc.com

WALLS / CLADDINGS
CORRUGATED - PANELS - HORIZONTAL
PATTERN "F" PANELS



ALUMINUM / STEEL
 MAXIMUM LENGTH: 144"

NOMINAL DIMENSIONS	
LAPPED WIDTH	PANEL WIDTH
40 1/2"	41 5/8"
51"	52"

AVAILABLE MATERIAL	
ALUMINUM	STEEL
.032"	22 GAUGE
	24 GAUGE
	26 GAUGE

NOTE: ALL DIMENSIONS ARE NOMINAL AND WILL VARY WITH DIFFERENT THICKNESSES AND TYPES OF MATERIAL.

STANDARD FACTORY TOLERANCES:

LENGTH: ± 5/32"

WIDTH: ± 3/16"

DIAGONAL: ± 3/16"

