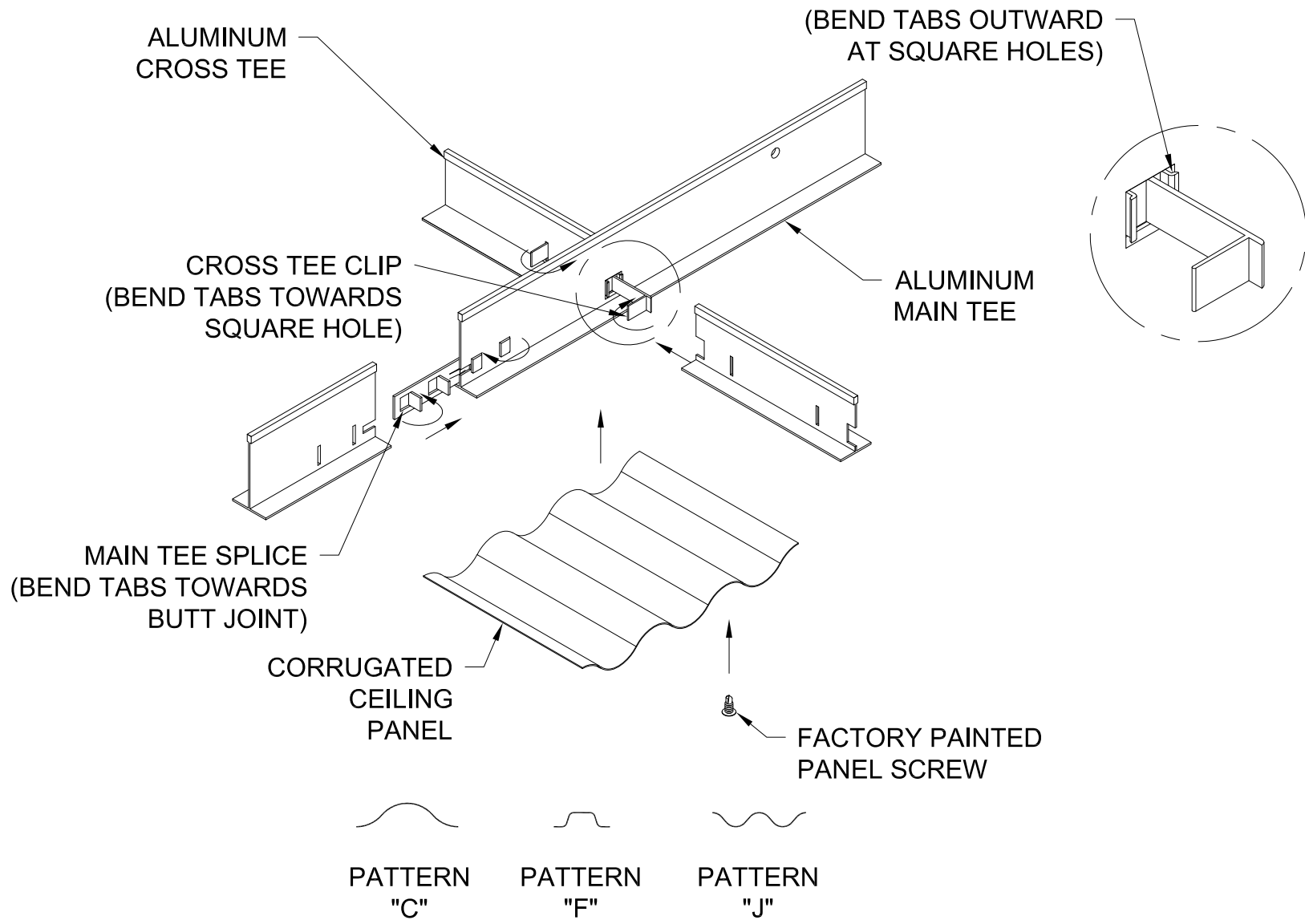


**GORDON**®  
ARCHITECTURAL+ENGINEERED SOLUTIONS

5023 Hazel Jones Rd.  
Bossier City, LA 71111  
800.747.8954  
GORDON-INC.COM  
sales@gordon-inc.com

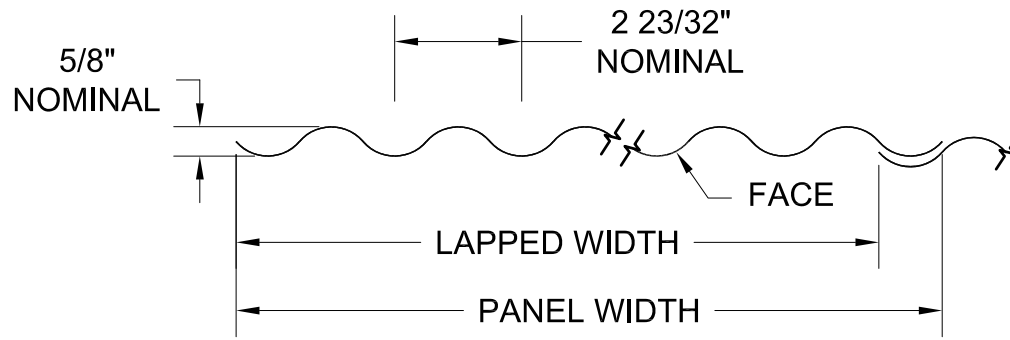
INDUSTRIAL CEILING SYSTEMS  
CORRUGATED - PANELS - FACE ATTACHED  
STEEL SUSPENSION - ISOMETRIC



**GORDON**<sup>®</sup>  
ARCHITECTURAL+ENGINEERED SOLUTIONS

5023 Hazel Jones Rd.  
Bossier City, LA 71111  
800.747.8954  
GORDON-INC.COM  
sales@gordon-inc.com

**INDUSTRIAL CEILING SYSTEMS  
CORRUGATED - PANELS - FACE ATTACHED  
ALUMINUM SUSPENSION - ISOMETRIC**



NOMINAL DIMENSIONS	
LAPPED WIDTH	PANEL WIDTH
40 3/8"	42"
51 5/8"	52 3/4"

**ALUMINUM**

.032" ALUMINUM MAXIMUM LENGTH: 144"

**STEEL**

MAXIMUM LENGTH: 144"

AVAILABLE MATERIAL	
ALUMINUM	STEEL
.032"	22 GAUGE
	24 GAUGE
	26 GAUGE

NOTE: ALL DIMENSIONS ARE NOMINAL AND WILL VARY WITH DIFFERENT THICKNESSES AND TYPES OF MATERIAL.

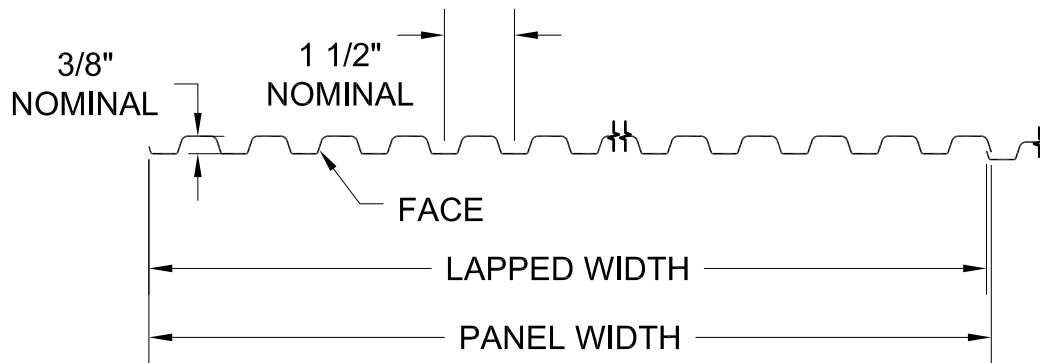
STANDARD FACTORY TOLERANCES:

- LENGTH: ± 5/32"
- WIDTH: ± 3/16"
- DIAGONAL: ± 3/16"



5023 Hazel Jones Rd.  
Bossier City, LA 71111  
800.747.8954  
GORDON-INC.COM  
sales@gordon-inc.com

**INDUSTRIAL CEILING SYSTEMS  
CORRUGATED - PANELS - FACE ATTACHED  
PATTERN "C" PANELS**



**ALUMINUM / STEEL**  
 MAXIMUM LENGTH: 144" (SIDE LAP CONDITIONS)  
 MAXIMUM LENGTH: 96" (END LAP CONDITIONS)

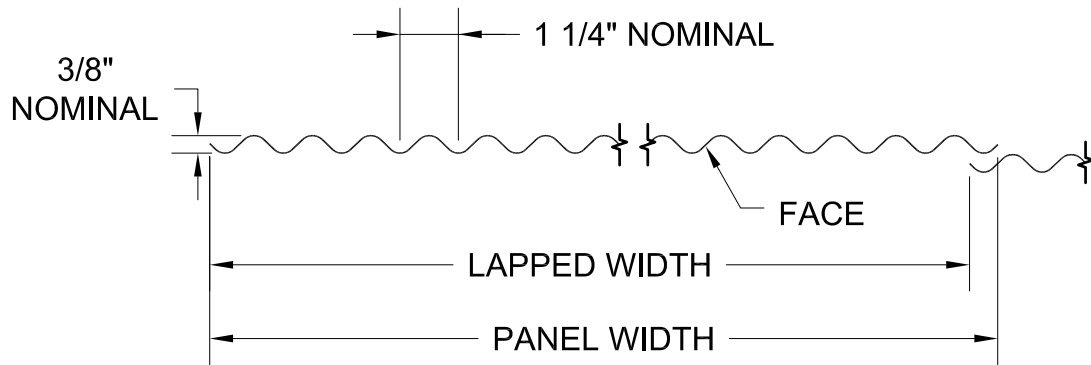
NOMINAL DIMENSIONS	
LAPPED WIDTH	PANEL WIDTH
39"	39 1/4"
49 7/8"	50"

AVAILABLE MATERIAL	
ALUMINUM	STEEL
.032"	24 GAUGE
	26 GAUGE

NOTE: ALL DIMENSIONS ARE NOMINAL AND WILL VARY WITH DIFFERENT THICKNESSES AND TYPES OF MATERIAL.

STANDARD FACTORY TOLERANCES:

- LENGTH: ± 5/32"
- WIDTH: ± 3/16"
- DIAGONAL: ± 3/16"



NOMINAL DIMENSIONS	
LAPPED WIDTH	PANEL WIDTH
40 1/2"	41 5/8"
51"	52"

AVAILABLE MATERIAL	
ALUMINUM	STEEL
.032"	22 GAUGE
	24 GAUGE
	26 GAUGE

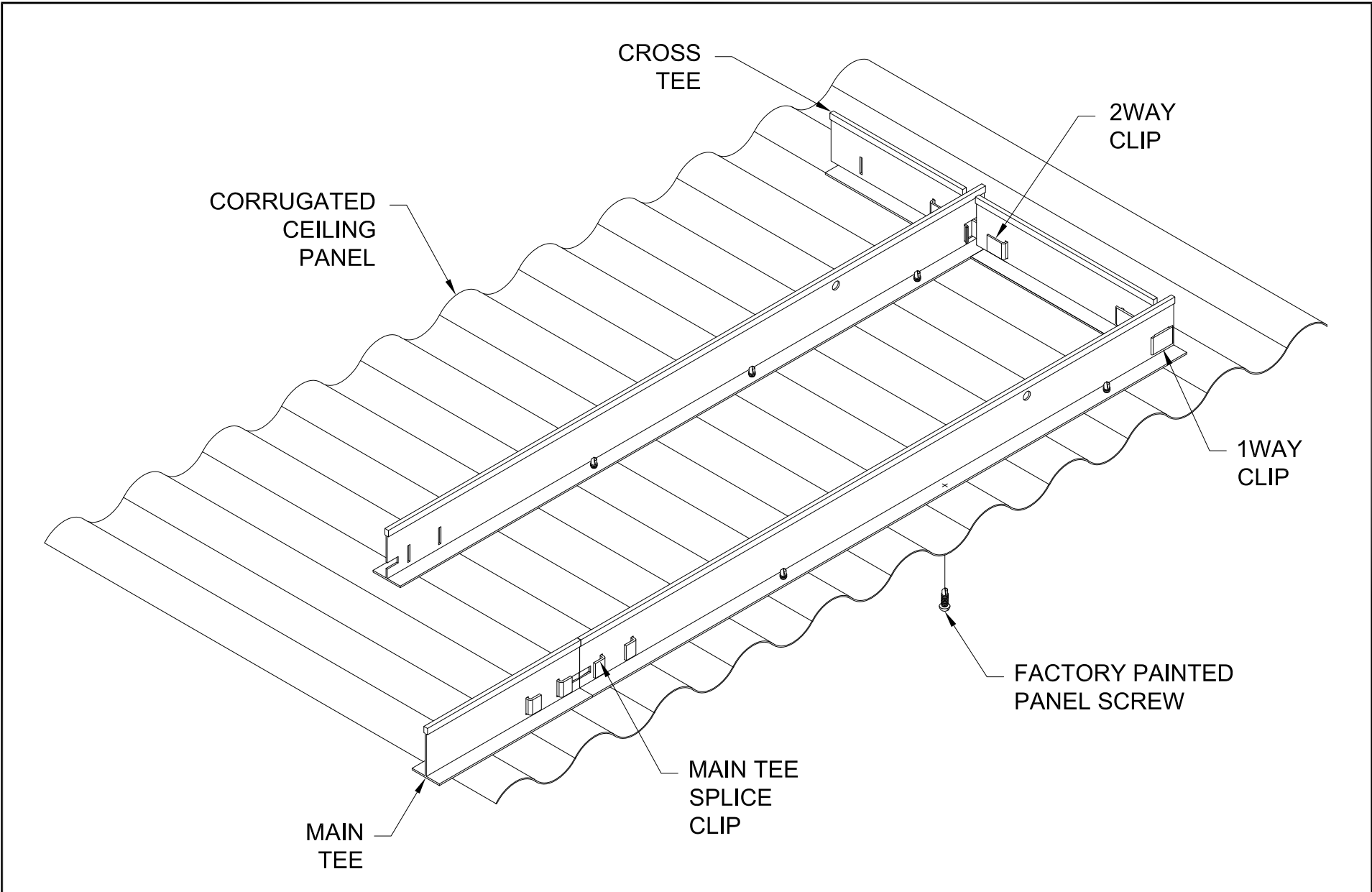
**ALUMINUM / STEEL**

MAXIMUM LENGTH: 144" (SIDE LAP CONDITIONS)  
 MAXIMUM LENGTH: 96" (END LAP CONDITIONS)

NOTE: ALL DIMENSIONS ARE NOMINAL AND WILL VARY WITH DIFFERENT THICKNESSES AND TYPES OF MATERIAL.

STANDARD FACTORY TOLERANCES:

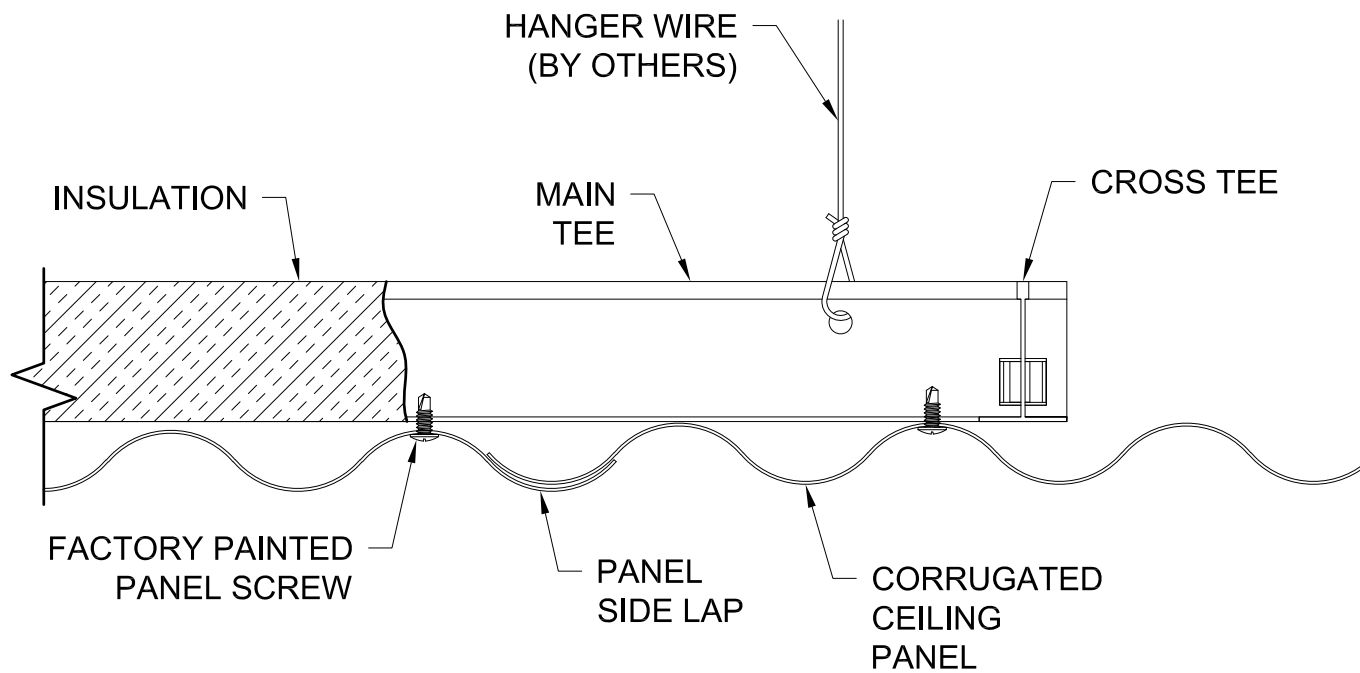
- LENGTH: ± 5/32"
- WIDTH: ± 3/16"
- DIAGONAL: ± 3/16"



**GORDON**<sup>®</sup>  
 ARCHITECTURAL+ENGINEERED SOLUTIONS

5023 Hazel Jones Rd.  
 Bossier City, LA 71111  
 800.747.8954  
 GORDON-INC.COM  
 sales@gordon-inc.com

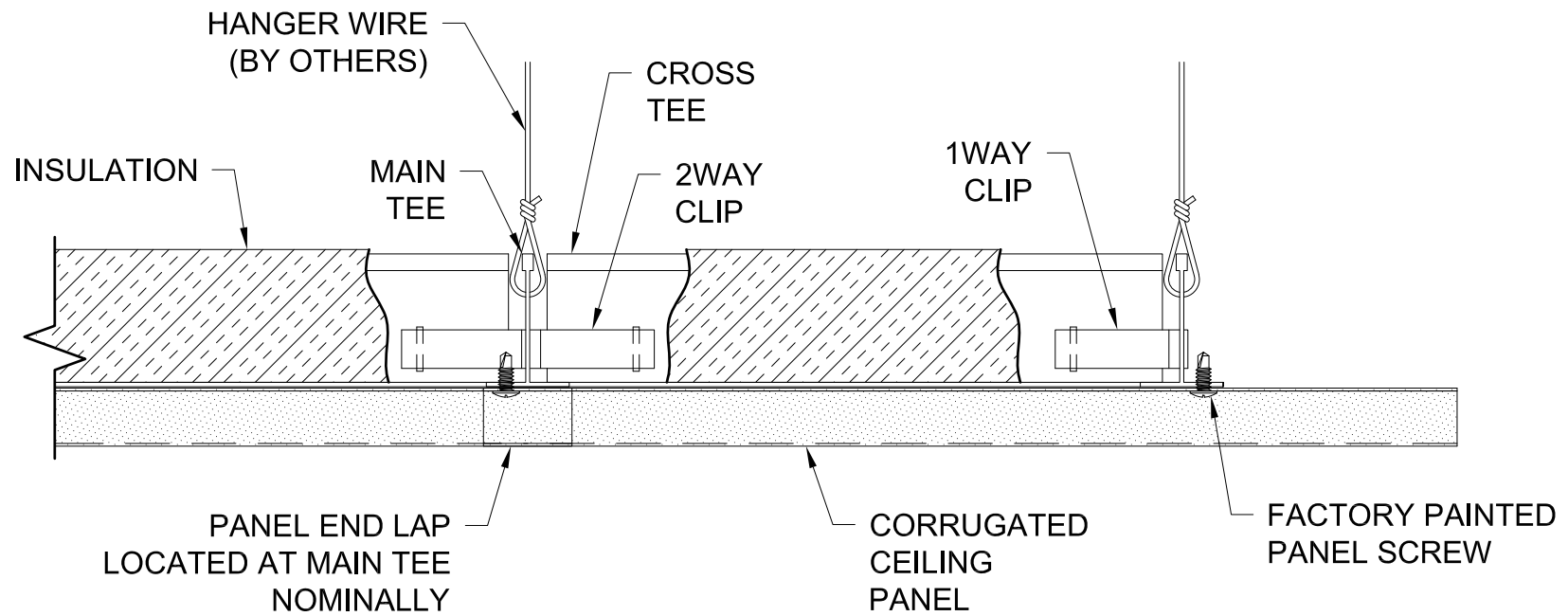
**INDUSTRIAL CEILING SYSTEMS**  
**CORRUGATED - PANELS - FACE ATTACHED**  
**WITHOUT PERIMETER TRIM**



**GORDON**<sup>®</sup>  
 ARCHITECTURAL+ENGINEERED SOLUTIONS

5023 Hazel Jones Rd.  
 Bossier City, LA 71111  
 800.747.8954  
 GORDON-INC.COM  
 sales@gordon-inc.com

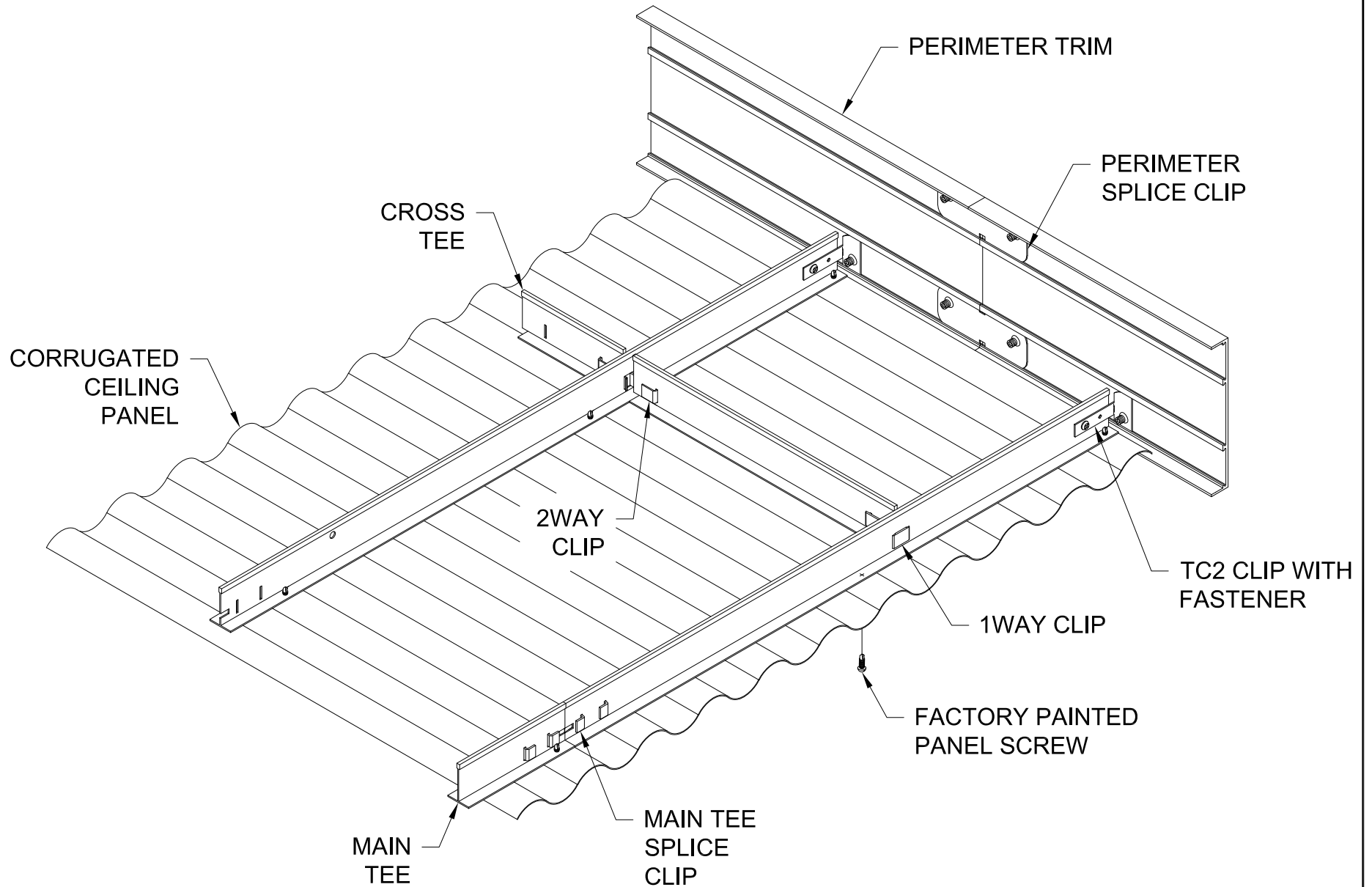
INDUSTRIAL CEILING SYSTEMS  
 CORRUGATED - PANELS - FACE ATTACHED  
 SIDE SECTION



**GORDON**<sup>®</sup>  
 ARCHITECTURAL+ENGINEERED SOLUTIONS  
 5023 Hazel Jones Rd.  
 Bossier City, LA 71111  
 800.747.8954  
 GORDON-INC.COM  
 sales@gordon-inc.com

INDUSTRIAL CEILING SYSTEMS  
 CORRUGATED - PANELS - FACE ATTACHED  
 END SECTION

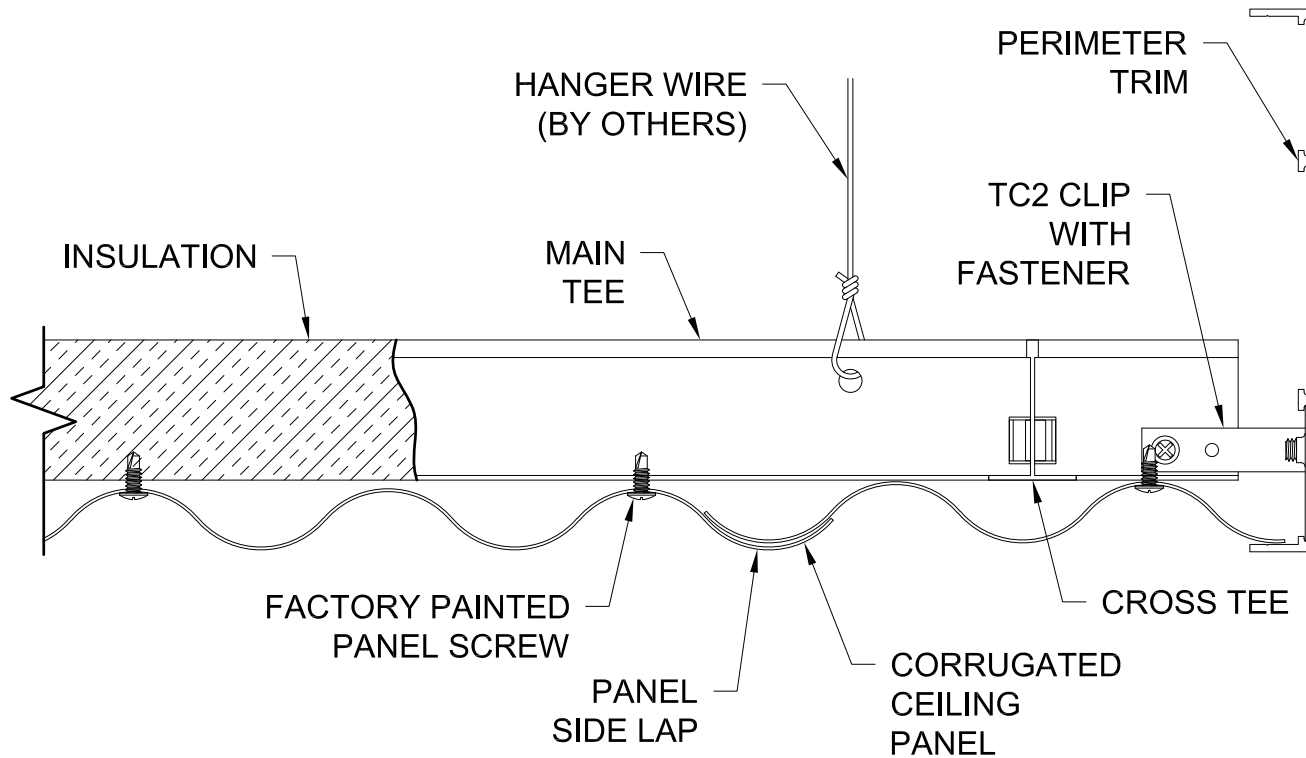




**GORDON**<sup>®</sup>  
 ARCHITECTURAL+ENGINEERED SOLUTIONS

5023 Hazel Jones Rd.  
 Bossier City, LA 71111  
 800.747.8954  
 GORDON-INC.COM  
 sales@gordon-inc.com

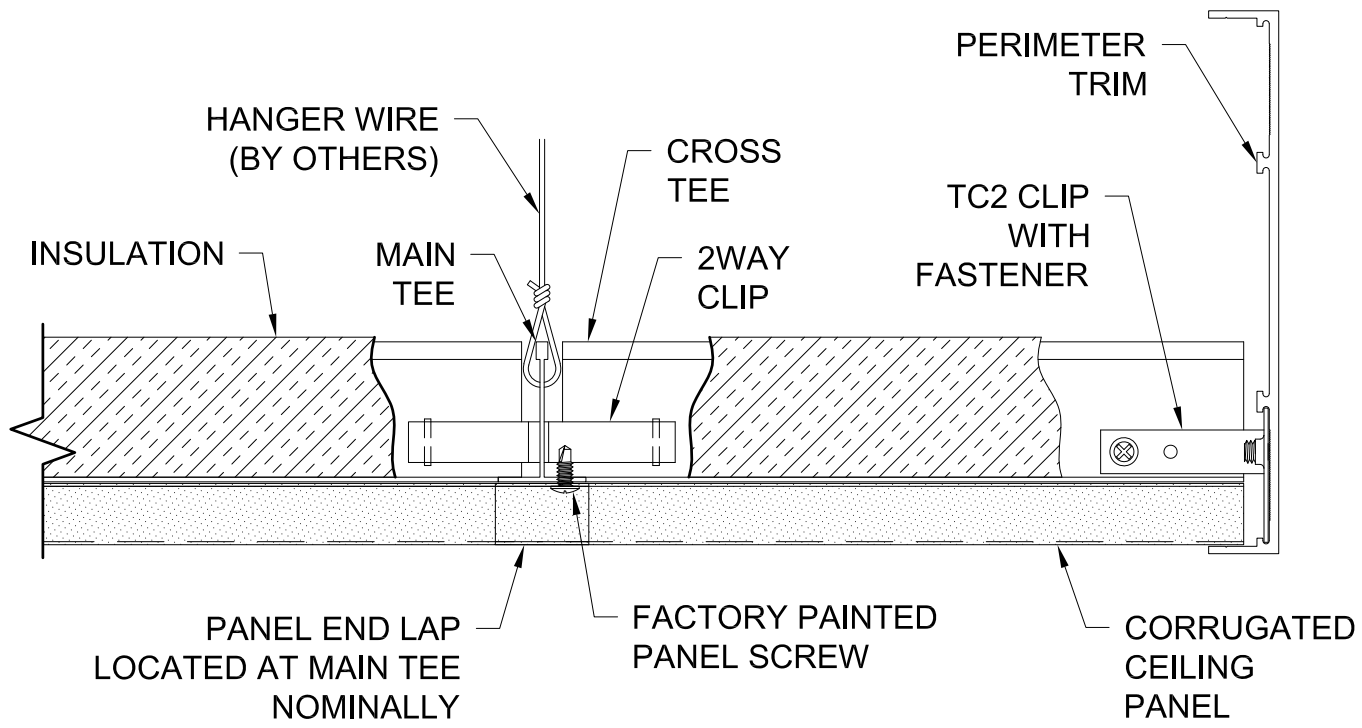
INDUSTRIAL CEILING SYSTEMS  
 CORRUGATED - PANELS - FACE ATTACHED  
 PERIMETER TRIM ISOMETRIC VIEW



**GORDON**<sup>®</sup>  
ARCHITECTURAL+ENGINEERED SOLUTIONS

5023 Hazel Jones Rd.  
Bossier City, LA 71111  
800.747.8954  
GORDON-INC.COM  
sales@gordon-inc.com

**INDUSTRIAL CEILING SYSTEMS  
CORRUGATED - PANELS - FACE ATTACHED  
PERIMETER TRIM SIDE SECTION**



**GORDON**®  
 ARCHITECTURAL+ENGINEERED SOLUTIONS

5023 Hazel Jones Rd.  
 Bossier City, LA 71111  
 800.747.8954  
 GORDON-INC.COM  
 sales@gordon-inc.com

**INDUSTRIAL CEILING SYSTEMS  
 CORRUGATED - PANELS - FACE ATTACHED  
 PERIMETER TRIM END SECTION**