

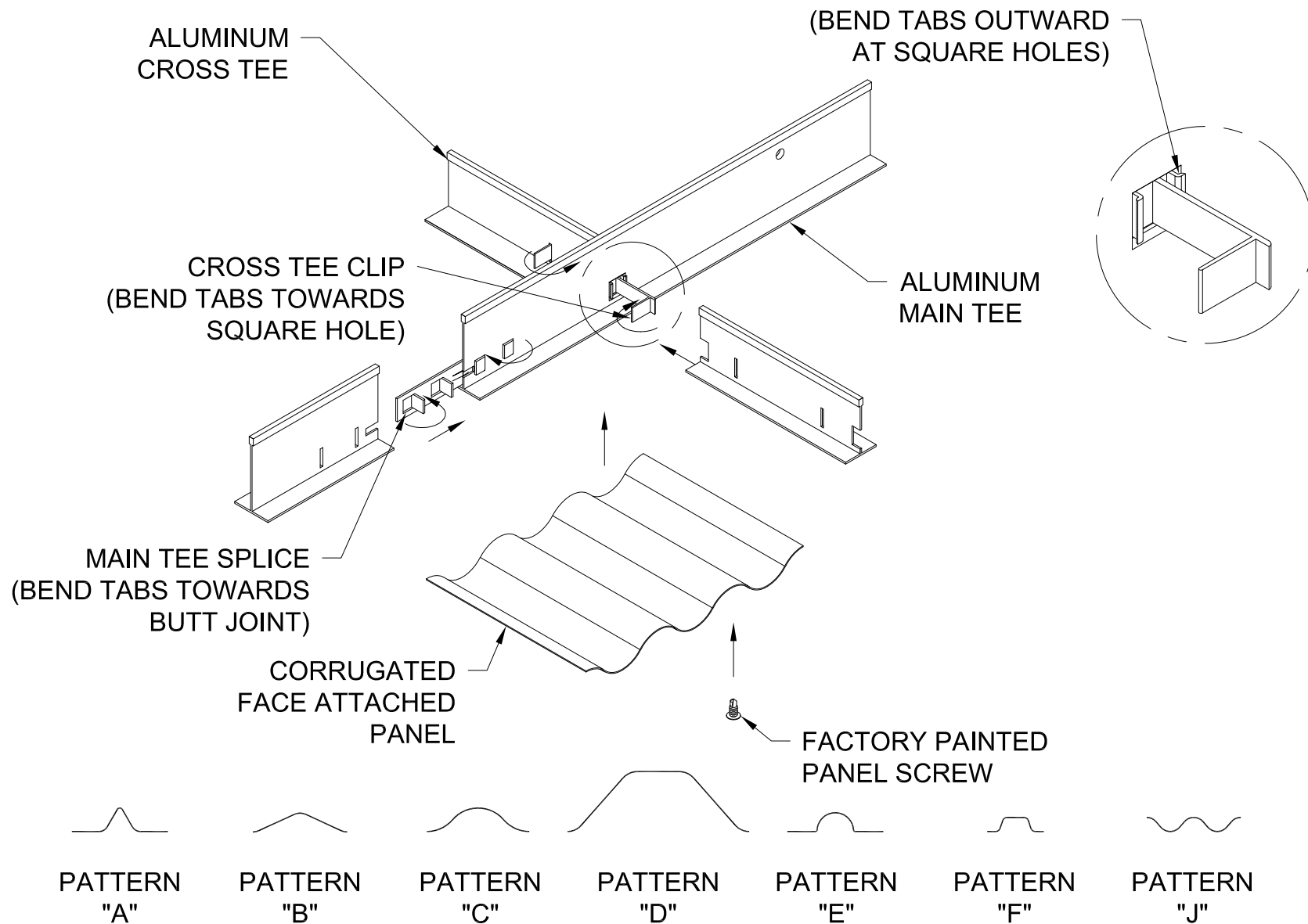
GORDON
ARCHITECTURAL+ENGINEERED SOLUTIONS

5023 Hazel Jones Rd.
Bossier City, LA 71111
800.747.8954
GORDON-INC.COM
sales@gordon-inc.com

CEILINGS

CORRUGATED - PANELS - FACE ATTACHED

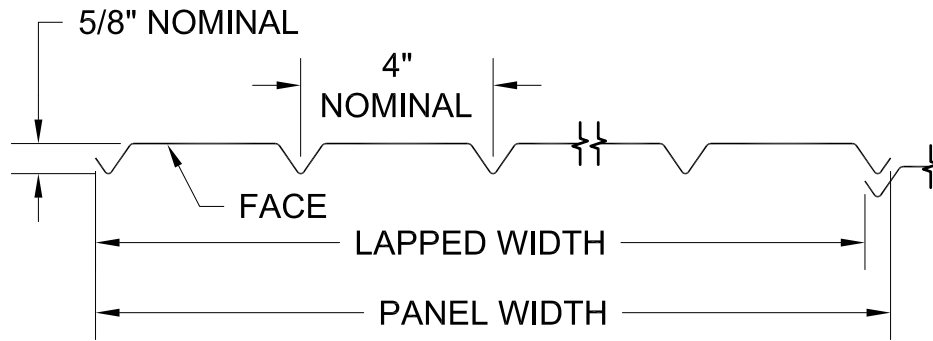
STEEL SUSPENSION - ISOMETRIC



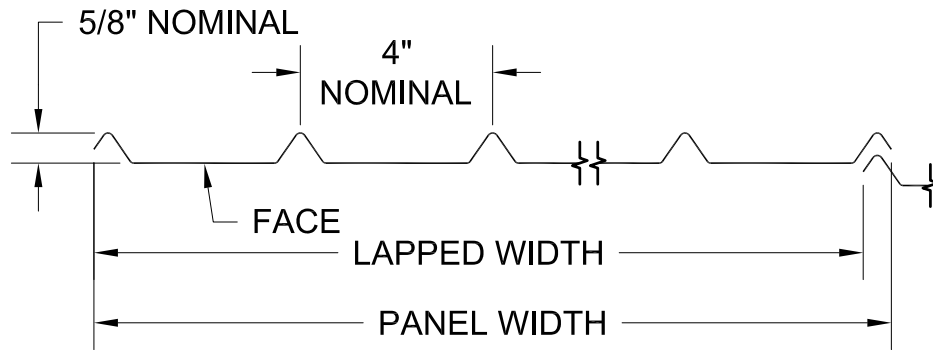
GORDON®
ARCHITECTURAL+ENGINEERED SOLUTIONS

5023 Hazel Jones Rd.
Bossier City, LA 71111
800.747.8954
GORDON-INC.COM
sales@gordon-inc.com

CEILING
CORRUGATED - PANELS - FACE ATTACHED
ALUMINUM SUSPENSION - ISOMETRIC



AO - ALUMINUM / STEEL
MAXIMUM LENGTH: 120"



AI - ALUMINUM / STEEL
MAXIMUM LENGTH: 120"

NOMINAL DIMENSIONS	
LAPPED WIDTH	PANEL WIDTH
40 3/4"	41 1/2"
51 1/4"	52"

AVAILABLE MATERIAL	
ALUMINUM	STEEL
.032"	24 GAUGE
	26 GAUGE

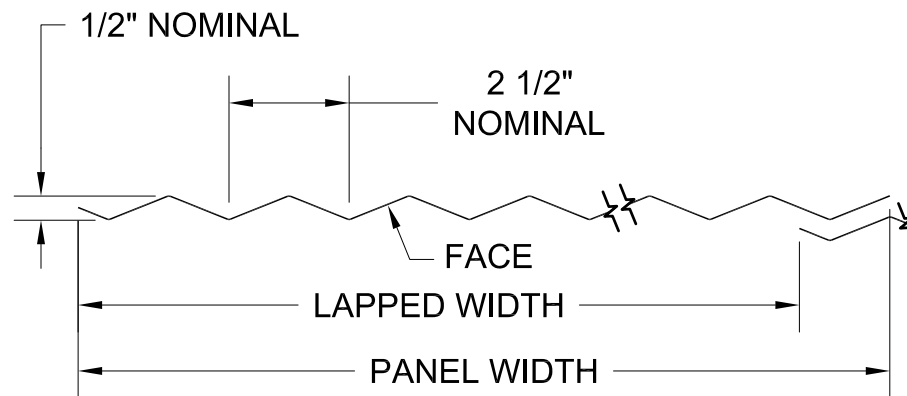
NOTE: ALL DIMENSIONS ARE NOMINAL AND WILL VARY WITH DIFFERENT THICKNESSES AND TYPES OF MATERIAL.

STANDARD FACTORY TOLERANCES:

LENGTH: $\pm 5/32$ "

WIDTH: $\pm 3/16$ "

DIAGONAL: $\pm 3/16$ "



ALUMINUM / STEEL

MAXIMUM LENGTH: 120"

NOMINAL DIMENSIONS	
LAPPED WIDTH	PANEL WIDTH
42 3/4"	44 3/4"
54 3/4"	55 3/4"

AVAILABLE MATERIAL	
ALUMINUM	STEEL
.032"	22 GAUGE
	24 GAUGE
	26 GAUGE

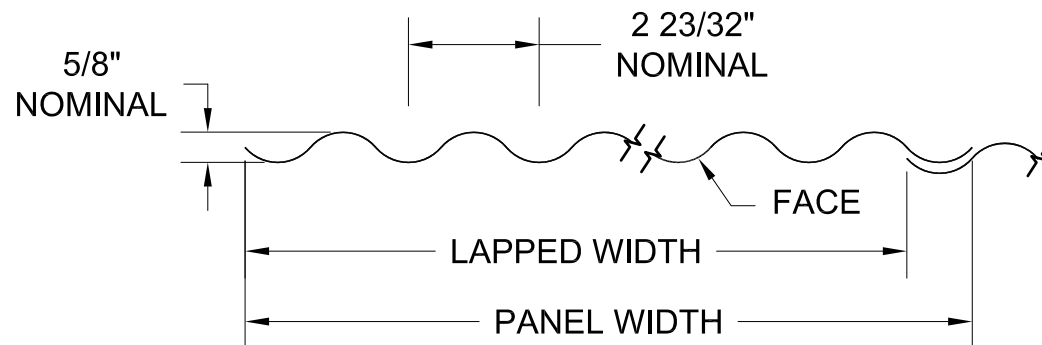
NOTE: ALL DIMENSIONS ARE NOMINAL AND WILL VARY WITH DIFFERENT THICKNESSES AND TYPES OF MATERIAL.

STANDARD FACTORY TOLERANCES:

LENGTH: $\pm 5/32$ "

WIDTH: $\pm 3/16$ "

DIAGONAL: $\pm 3/16$ "



NOMINAL DIMENSIONS	
LAPPED WIDTH	PANEL WIDTH
40 3/8"	42"
51 5/8"	52 3/4"

ALUMINUM

.032" ALUMINUM MAXIMUM LENGTH: 144"
 .063" ALUMINUM MAXIMUM LENGTH: 120"

STEEL

MAXIMUM LENGTH: 144"

AVAILABLE MATERIAL	
ALUMINUM	STEEL
.032"	22 GAUGE
.063"	24 GAUGE
	26 GAUGE

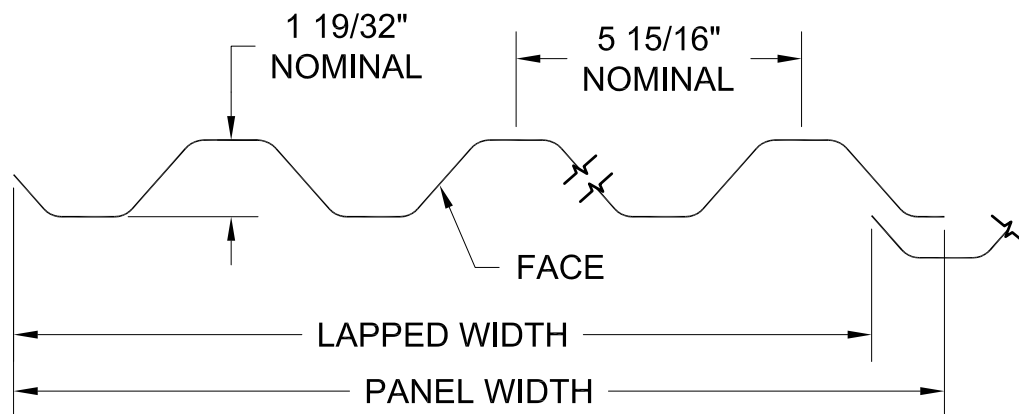
NOTE: ALL DIMENSIONS ARE NOMINAL AND WILL VARY WITH
 DIFFERENT THICKNESSES AND TYPES OF MATERIAL.

STANDARD FACTORY TOLERANCES:

LENGTH: $\pm 5/32$ "

WIDTH: $\pm 3/16$ "

DIAGONAL: $\pm 3/16$ "



ALUMINUM / STEEL
 MAXIMUM LENGTH: 120"

NOMINAL DIMENSIONS	
LAPPED WIDTH	PANEL WIDTH
47 1/2"	49 1/2"
38 5/8"	39 1/2"

AVAILABLE MATERIAL	
ALUMINUM	STEEL
.032"	22 GAUGE
	24 GAUGE
	26 GAUGE

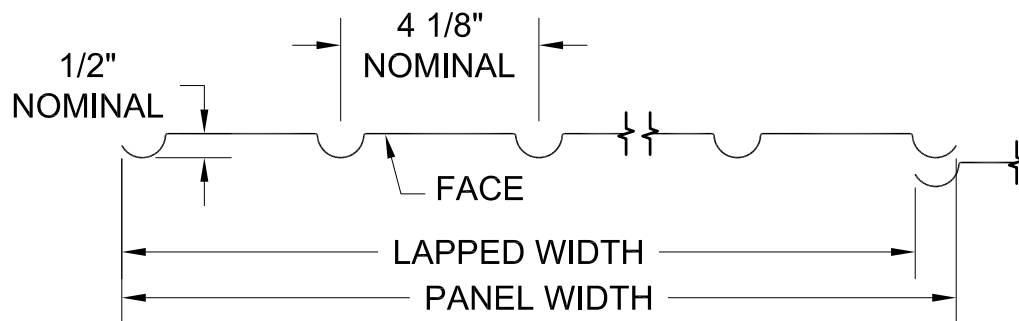
NOTE: ALL DIMENSIONS ARE NOMINAL AND WILL VARY WITH
 DIFFERENT THICKNESSES AND TYPES OF MATERIAL.

STANDARD FACTORY TOLERANCES:

LENGTH: $\pm 5/32"$

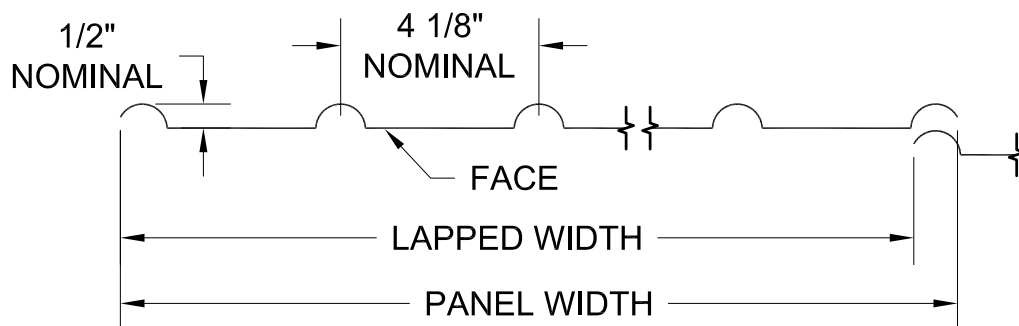
WIDTH: $\pm 3/16"$

DIAGONAL: $\pm 3/16"$



EO - ALUMINUM / STEEL

MAXIMUM LENGTH: 120"



EI - ALUMINUM / STEEL

MAXIMUM LENGTH: 120"

NOMINAL DIMENSIONS	
LAPPED WIDTH	PANEL WIDTH
53 3/4"	54 3/4"

AVAILABLE MATERIAL	
ALUMINUM	STEEL
.032"	24 GAUGE
	26 GAUGE

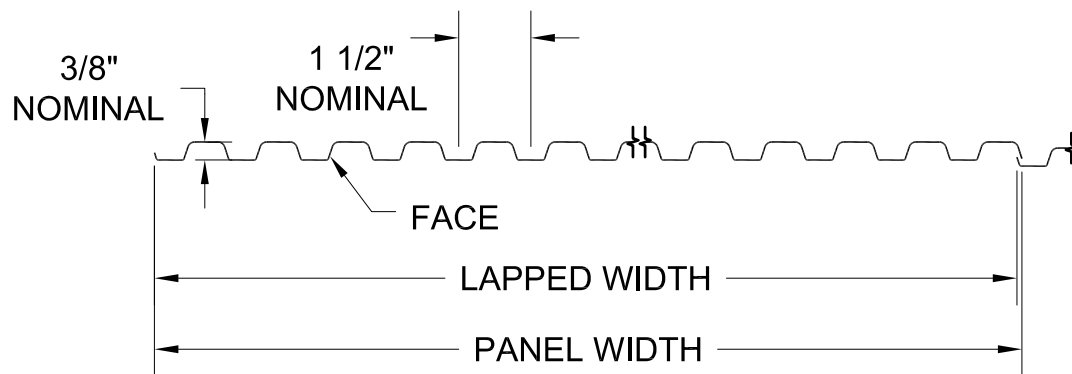
NOTE: ALL DIMENSIONS ARE NOMINAL AND WILL VARY WITH DIFFERENT THICKNESSES AND TYPES OF MATERIAL.

STANDARD FACTORY TOLERANCES:

LENGTH: $\pm 5/32$ "

WIDTH: $\pm 3/16$ "

DIAGONAL: $\pm 3/16$ "



ALUMINUM / STEEL
MAXIMUM LENGTH: 120"

NOMINAL DIMENSIONS	
LAPPED WIDTH	PANEL WIDTH
39"	39 1/4"
49 7/8"	50"

AVAILABLE MATERIAL	
ALUMINUM	STEEL
.032"	24 GAUGE
	26 GAUGE

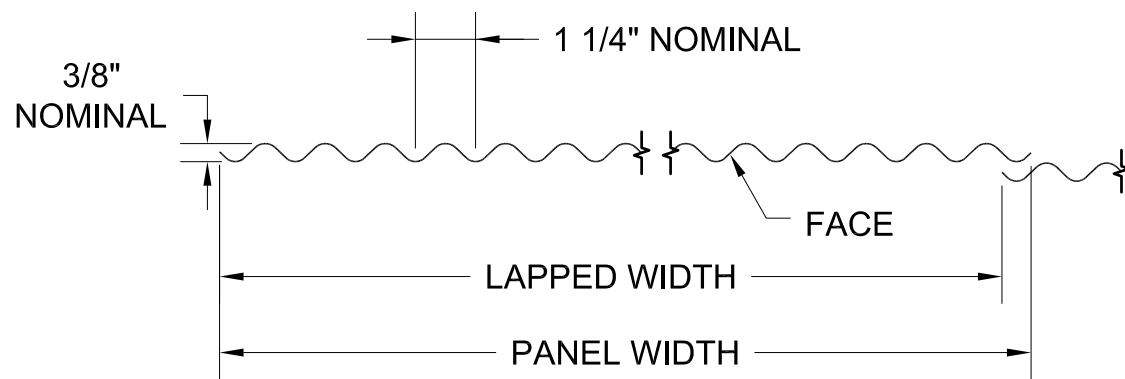
NOTE: ALL DIMENSIONS ARE NOMINAL AND WILL VARY WITH DIFFERENT THICKNESSES AND TYPES OF MATERIAL.

STANDARD FACTORY TOLERANCES:

LENGTH: $\pm 5/32"$

WIDTH: $\pm 3/16"$

DIAGONAL: $\pm 3/16"$



ALUMINUM / STEEL
MAXIMUM LENGTH: 144"

NOMINAL DIMENSIONS	
LAPPED WIDTH	PANEL WIDTH
40 1/2"	41 5/8"
51"	52"

AVAILABLE MATERIAL	
ALUMINUM	STEEL
.032"	22 GAUGE
	24 GAUGE
	26 GAUGE

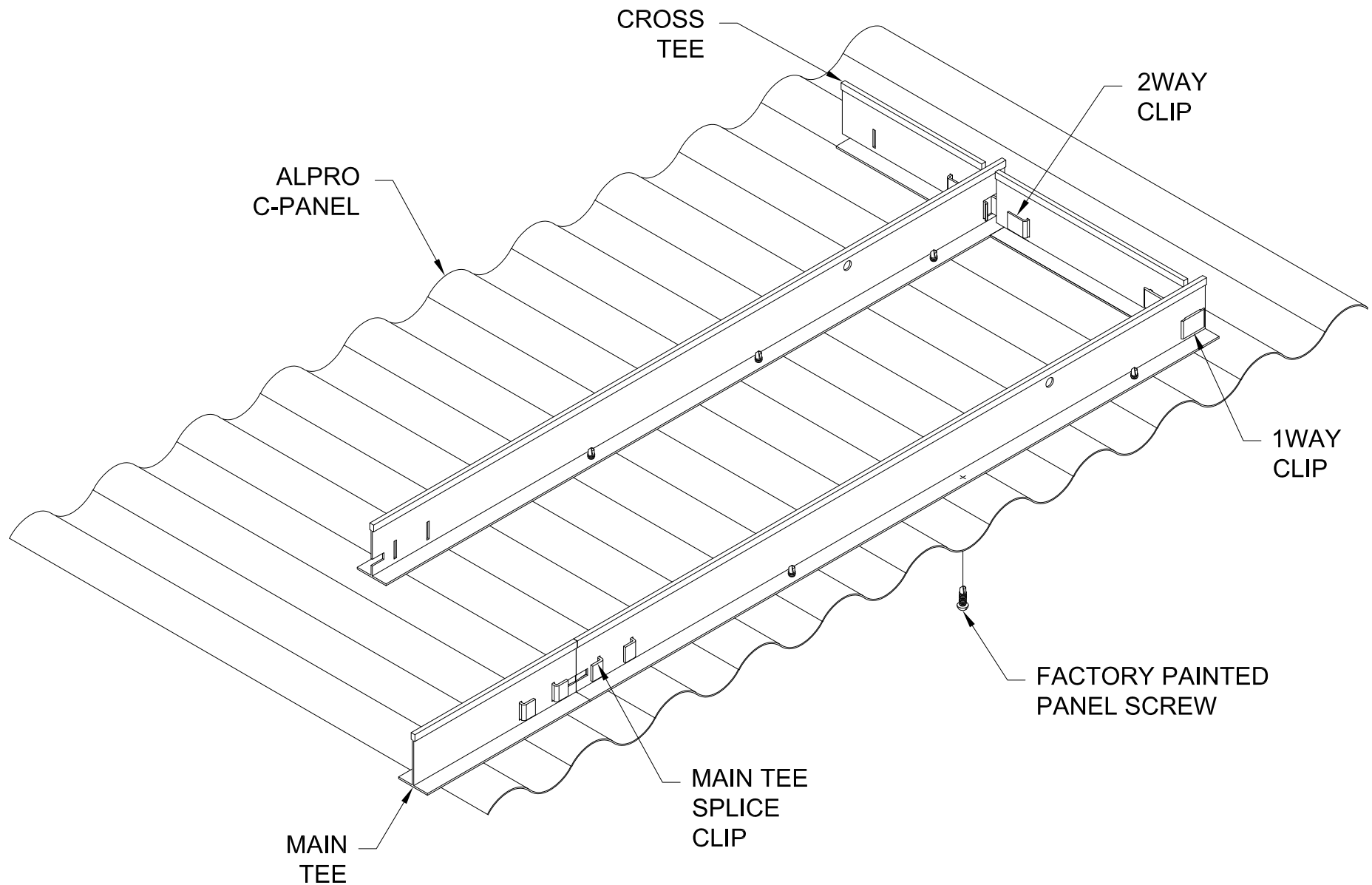
NOTE: ALL DIMENSIONS ARE NOMINAL AND WILL VARY WITH
DIFFERENT THICKNESSES AND TYPES OF MATERIAL.

STANDARD FACTORY TOLERANCES:

LENGTH: $\pm 5/32"$

WIDTH: $\pm 3/16"$

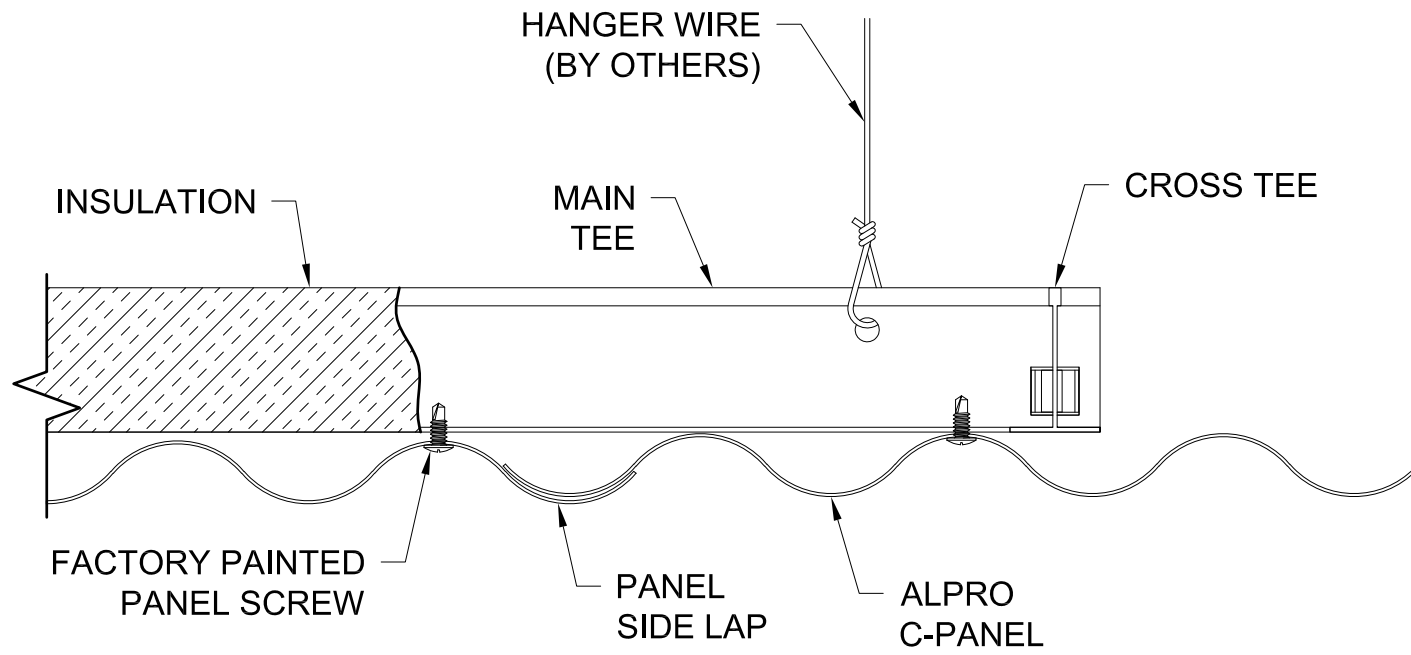
DIAGONAL: $\pm 3/16"$



GORDON®
ARCHITECTURAL+ENGINEERED SOLUTIONS

5023 Hazel Jones Rd.
Bossier City, LA 71111
800.747.8954
GORDON-INC.COM
sales@gordon-inc.com

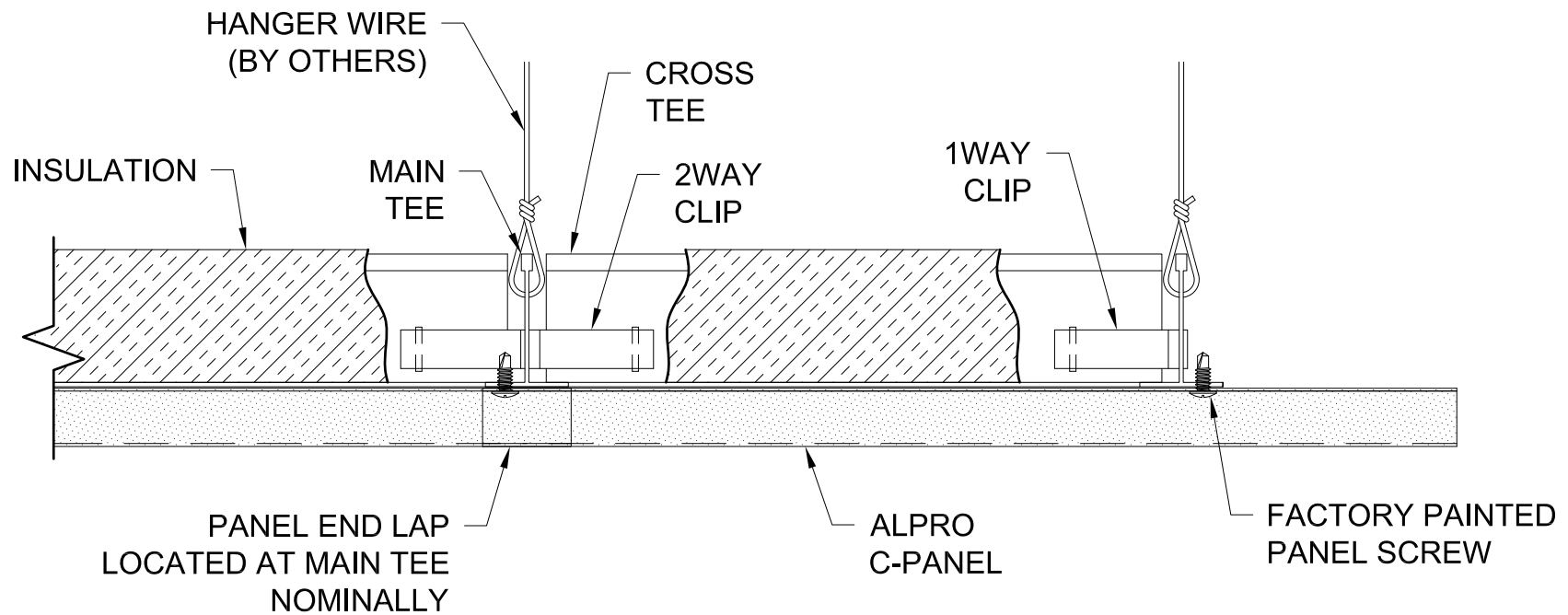
CEILINGS
CORRUGATED - PANELS - FACE ATTACHED
WITHOUT PERIMETER TRIM



GORDON®
ARCHITECTURAL+ENGINEERED SOLUTIONS

5023 Hazel Jones Rd.
Bossier City, LA 71111
800.747.8954
GORDON-INC.COM
sales@gordon-inc.com

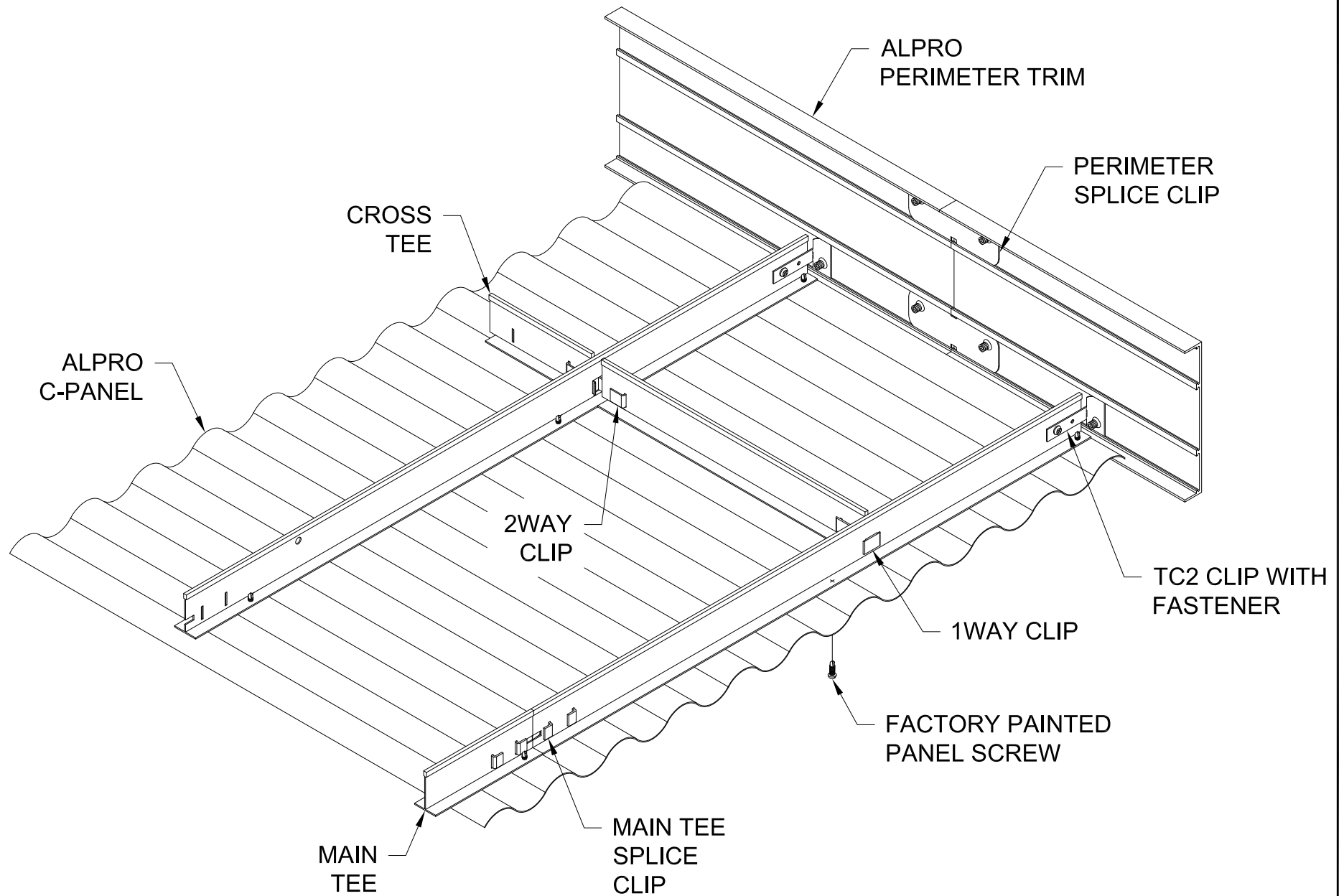
CEILING
CORRUGATED - PANELS - FACE ATTACHED
SIDE SECTION



CEILINGS CORRUGATED - PANELS - FACE ATTACHED END SECTION

GORDON
ARCHITECTURAL+ENGINEERED SOLUTIONS

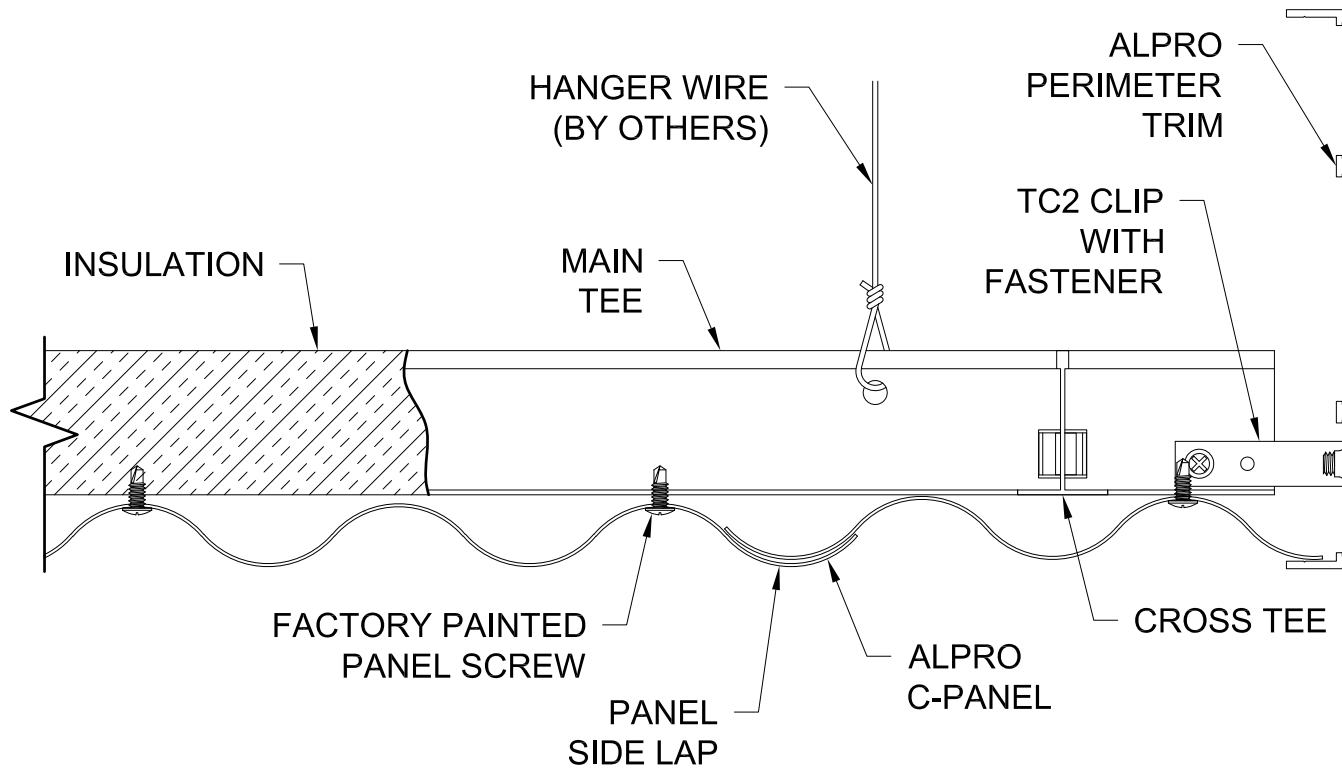
5023 Hazel Jones Rd.
Bossier City, LA 71111
800.747.8954
GORDON-INC.COM
sales@gordon-inc.com



GORDON®
ARCHITECTURAL+ENGINEERED SOLUTIONS

5023 Hazel Jones Rd.
Bossier City, LA 71111
800.747.8954
GORDON-INC.COM
sales@gordon-inc.com

CEILINGS
CORRUGATED - PANELS - FACE ATTACHED
PERIMETER TRIM ISOMETRIC VIEW



GORDON®
ARCHITECTURAL+ENGINEERED SOLUTIONS

5023 Hazel Jones Rd.
Bossier City, LA 71111
800.747.8954
GORDON-INC.COM
sales@gordon-inc.com

CEILING
CORRUGATED - PANELS - FACE ATTACHED
PERIMETER TRIM SIDE SECTION