

**AMHS CLIPS  
For Slotted Tee  
Cleanroom Suspension Systems**

**Installation Instructions**

**GORDON**  
ARCHITECTURAL+ENGINEERED SOLUTIONS

## **PART 1 - STORAGE AND HANDLING**

1. After receiving materials, transfer material immediately to a safe, dry, climate-controlled place where it will not be damaged during storage.
  - a. Do not store Gordon, Inc. product or components outdoors.
  - b. Store Crates and / or Cartons flat in a dry location away from activity.
  - c. Do not store near corrosive material such as acids, salt, fertilizer, etc.
  - d. All materials should be protected during site storage to prevent damage to the finished work from other trades.
  - e. Store materials inside a well-insulated area, away from concrete and masonry and protected from the weather, moisture, soiling, abrasion, extreme temperatures and humidity.
  - f. Protect the strippable protective covering on metal panels from exposure to sunlight, heat, and high humidity.
  - g. Store product in Gordon's unopened packaging until installation of product.
  - h. Prevent contact with material that may cause discoloration, staining, or corrosion.
  - i. Store in flat, fully supported position.
  - j. Store to prevent twisting, bending, abrasion, scratching, and denting.
  - k. Do not drop or stand containers on edges or corners.
  - l. Gordon, Inc. components and systems are not packaged to receive the load of any other material stored or stacked upon it. Therefore, **DO NOT DOUBLE STACK OR STORE OTHER MATERIAL** on top of the packages or crates.
2. Inspect all material prior to installation. Do not install any substandard or unacceptable material. Gordon, Inc. will not be responsible for the cost of repair or removal, or costs resulting from removal of rejected material, or the installation of replacement material.
3. Material should be cleaned thoroughly prior to installation.

## **PART 2 - INSTALLATION**

### **2.01 - APPLICABLE CODES AND STANDARDS FOR INSTALLATION**

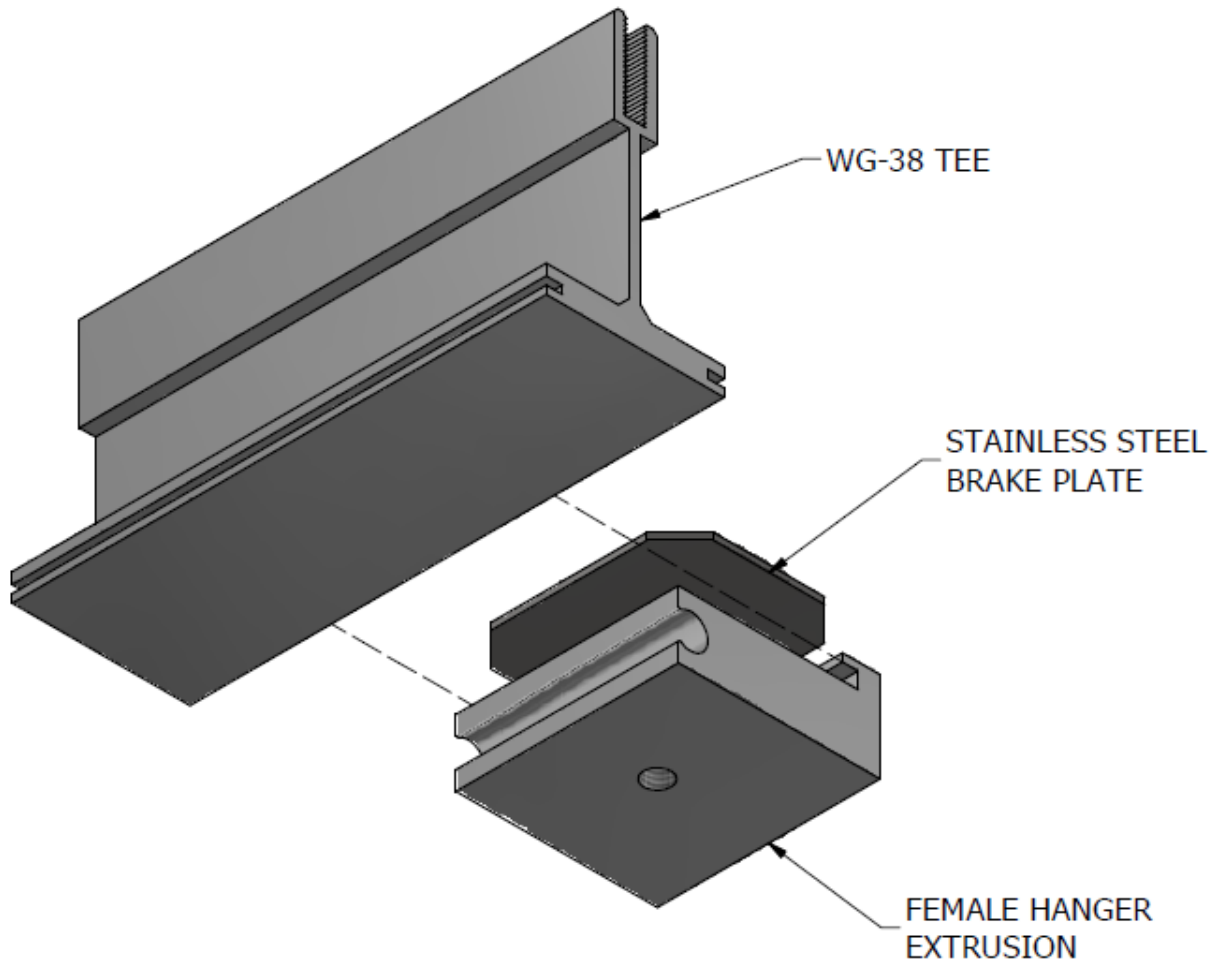
1. Project Specifications
2. Architect approved Shop Drawings

### **2.02 - SPECIAL TOOLS / MATERIALS REQUIRED**

- Cordless Screw Driver
- 1/8" Allen Head Driver
- Vice / Locking Grip Pliers

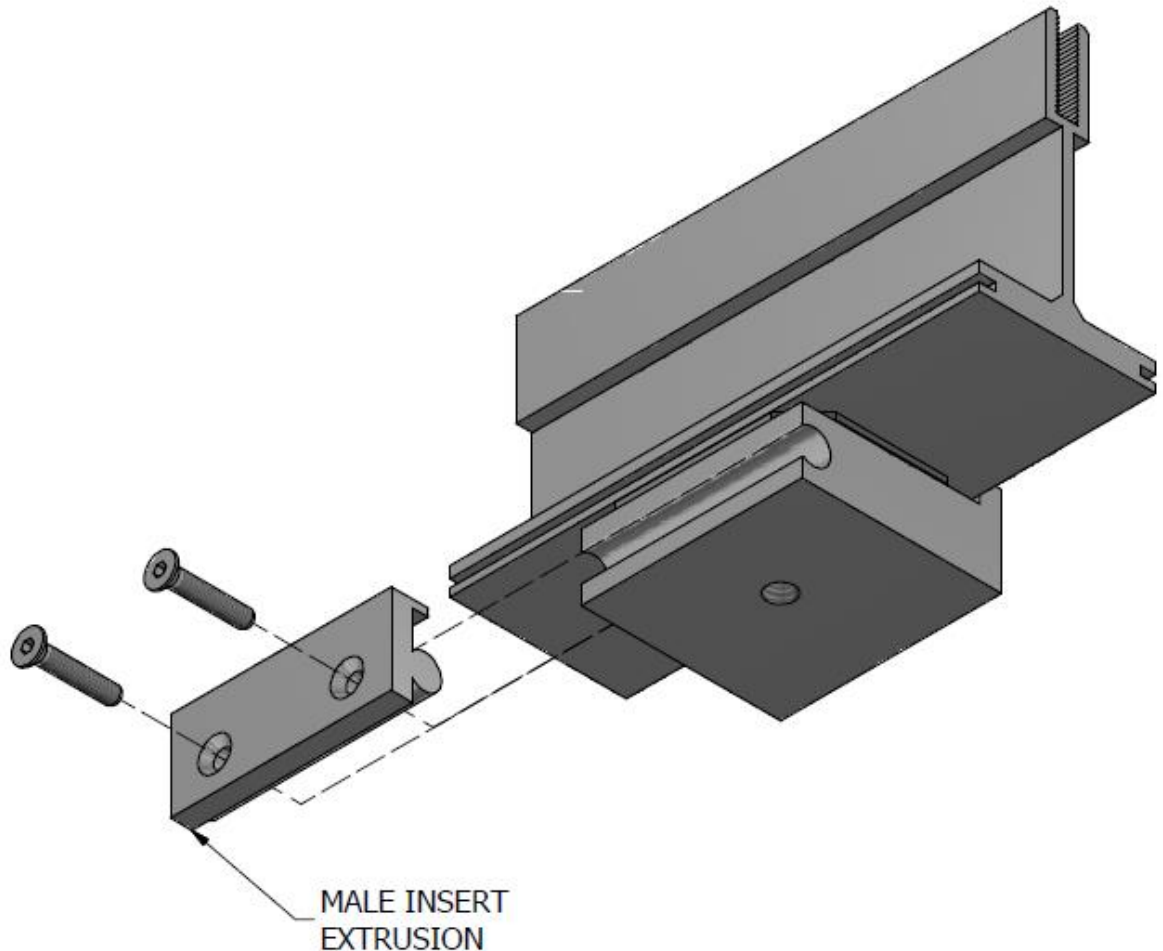
**2.03 - Step 1:**

Identify location for AMHS Clip. While holding Stainless Steel Brake Plate to bottom of the Tee Flange, slide the Female Hanger Extrusion under the Tee until the top return leg on this extrusion engages the Tee edge slot.



## **Step 2:**

While holding the Brake Plate and Female Hanger Extrusion in place, insert the top return leg of the Male Insert Extrusion into the Tee edge slot beside the Female Hanger Extrusion. Align the radius bulb on the Male Insert Extrusion with the radius boss on the Female Hanger Extrusion and slide together to engage.



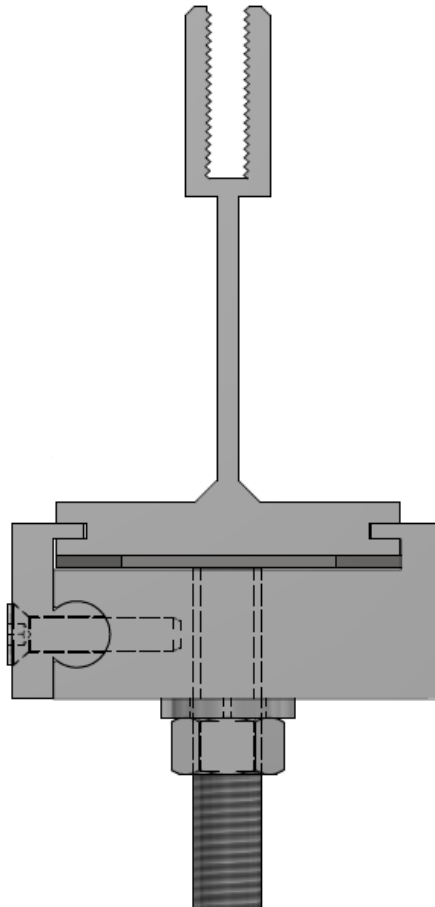
## **Step 3:**

Mechanically connect the Male Insert Extrusion to the Female Hanger Extrusion using the manufacturer's provided Socket Flat Head #10-32 X 1" SS Screws. Tighten screws until Screw Heads are flush.

**Step 4:**

To secure AHMS Clip to the Suspension Tee and prevent AMHS Clip from sliding, thread Hanger Rod until it fully contacts the Brake Plate. Once Hanger Rod is hand tight, use a pair of vice / locking grip pliers to apply an additional ½ turn to lock in place.

To prevent the Hanger Rod from loosening due to movement / vibrations, a Lock Washer and Nut should be tightened against the AMHS Clip until Lock Washer is flat.



**GORDON**<sup>®</sup>  
ARCHITECTURAL+ENGINEERED SOLUTIONS

5023 HAZEL JONES ROAD  
BOSSIER CITY, LA 71111  
800-747-8954

WWW.GORDON-INC.COM  
SALES@GORDON-INC.COM

