



**AcoustiLine™**  
**Acoustical Walls**

**Installation Instructions**

**GORDON**  
ARCHITECTURAL+ENGINEERED SOLUTIONS



## **PART 1 - STORAGE AND HANDLING**

1. After receiving materials, transfer material immediately to a safe, dry, climate-controlled place where it will not be damaged during storage.
  - a. Do not store Gordon, Inc. product or components outdoors.
  - b. Store Crates and / or Cartons flat in a dry location away from activity.
  - c. Do not store near corrosive material such as acids, salt, fertilizer, etc.
  - d. All materials should be protected during site storage to prevent damage to the finished work from other trades.
  - e. Store materials inside a well-insulated area, away from concrete and masonry and protected from the weather, moisture, soiling, abrasion, extreme temperatures and humidity.
  - f. Protect the strippable protective covering on metal panels from exposure to sunlight, heat, and high humidity.
  - g. Store product in Gordon's unopened packaging until installation of product.
  - h. Prevent contact with material that may cause discoloration, staining, or corrosion.
  - i. Store in flat, fully supported position.
  - j. Store to prevent twisting, bending, abrasion, scratching, and denting.
  - k. Do not drop or stand containers on edges or corners.
  - l. Gordon, Inc. components and systems are not packaged to receive the load of any other material stored or stacked upon it. Therefore, **DO NOT DOUBLE STACK OR STORE OTHER MATERIAL** on top of the packages or crates.
2. Inspect all material prior to installation. Do not install any substandard or unacceptable material. Gordon, Inc. will not be responsible for the cost of repair or removal, or costs resulting from removal of rejected material, or the installation of replacement material.
3. Material should be cleaned thoroughly prior to installation.

## **PART 2 - INSTALLATION**

AcoustiLine™ materials shall conform to the latest edition of reference standards or construction documents listed below, and to applicable codes and requirements of local authorities having jurisdiction. Whenever a conflict occurs, consult the project architect as to which requirements shall apply.

### **2.01 - APPLICABLE CODES AND STANDARDS FOR INSTALLATION**

1. Project specifications
2. Architect approved shop drawings

### **2.02 - FIELD CUTTING**

AcoustiLine™ can be cut with the use of the following tools:

- Industrial use circular saw with metal cutting wheel
- "Port-a-band" saw
- Hand-held nibblers or shears

### **SAFETY PRECAUTIONS:**

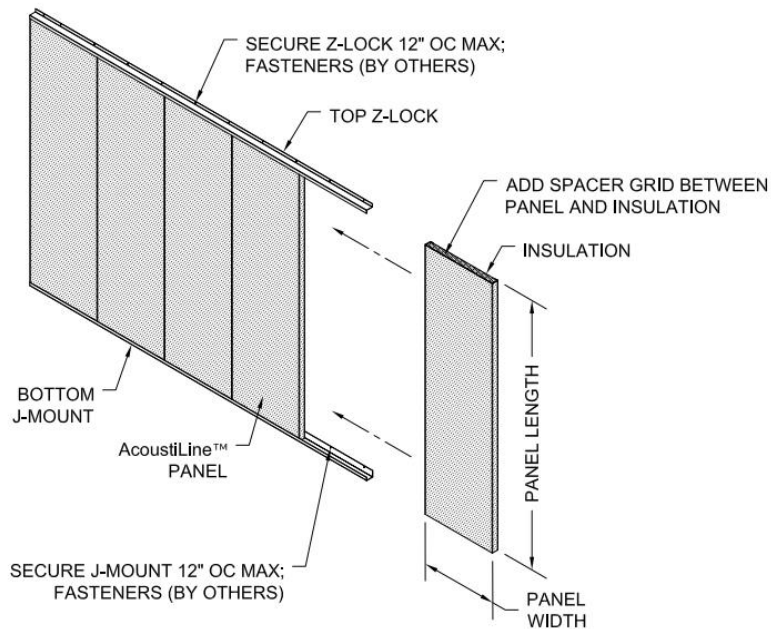
- Refer to tool manufacturer's detailed guides for proper selection and safe operation of all tools and equipment.
- Gloves should be worn to prevent injury while handling panels.
- Safety glasses should be worn to prevent eye injury when cutting or drilling steel or aluminum panels.

### **2.03 - TOUCH-UP PAINT**

- Touch-up paint is available by request to Gordon, Inc. at 800-747-8954.
- Use of touch-up paint on powder coated AcoustiLine™ materials should be limited and avoided where possible, as this air-dry, water-based paint is not as durable, and may appear slightly different in color and gloss level than the original finish.

### **2.04 - Modules with open end condition:**

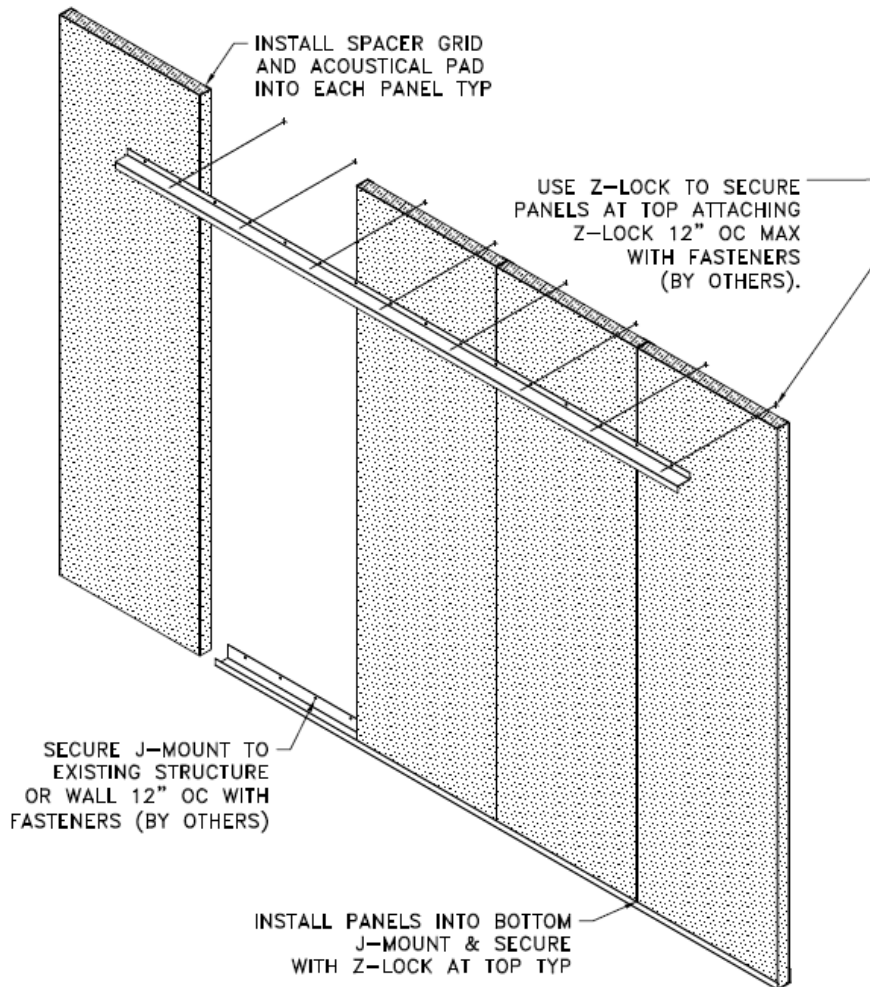
1. Review completely and comply with the contract documents, the approved shop drawings, and Gordon, Inc.'s AcoustiLine™ Installation Instructions.
2. Secure bottom J-Mount and Z-Lock 12" on center using correct fasteners for substrate. Fasteners provided by installing contractor.
3. Place Spacer Grids, if required, inside panels so that the flat sides do not touch the backside of the panel.
4. Place Acoustical Pads inside panels, if required, on top of the Spacer Grids.
5. Slide panels consecutively in the wall mounts. (See Figure A).
6. Fasten with one screw through mounts at top and bottom corners of end panels to prevent movement of panels.
7. Clean and touch-up finished material as required.



**Figure A: Modules with open end condition**

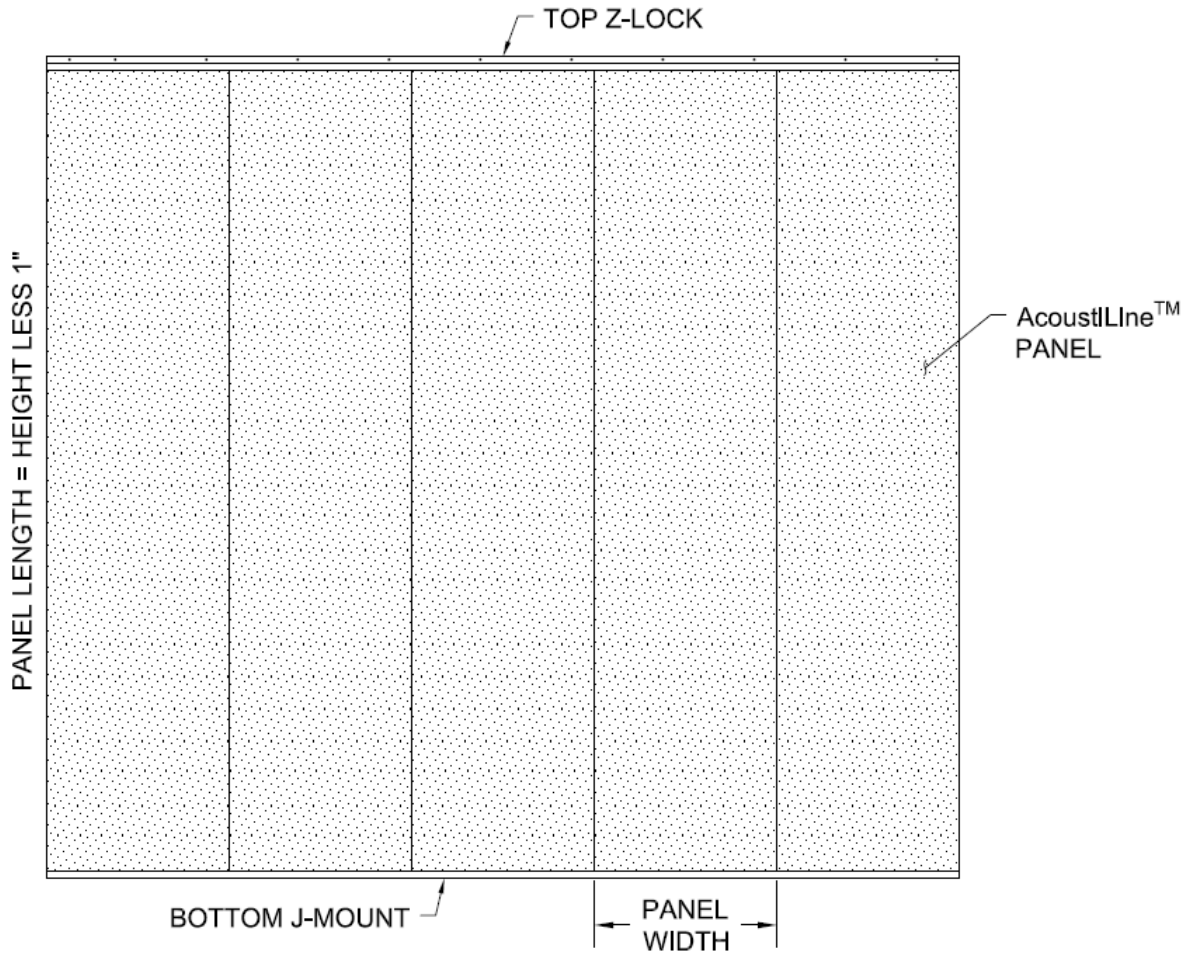
**2.05 - Modules with closed end condition (between walls or ends obstructed):**

1. Review completely and comply with the contract documents, the approved shop drawings, and Gordon, Inc.'s AcoustiLine™ Installation Instructions.
2. Secure bottom J-Mount 12" on center using correct fasteners for substrate. Fasteners provided by installing contractor.
3. Place Spacer Grids, if required, inside panels so that the flat sides do not touch the backside of the panel.
4. Place Acoustical Pads inside panels, if required, on top of the Spacer Grids.
5. Install panels consecutively in bottom J-Mount. Panels must be temporarily held in place using strapping, bracing or other means.
6. Secure Top Z-Lock 12" on center at top of panels using correct fasteners for substrate. Fasteners provided by installing contractor. (See Figure B).
7. Clean and touch-up finished material as required.

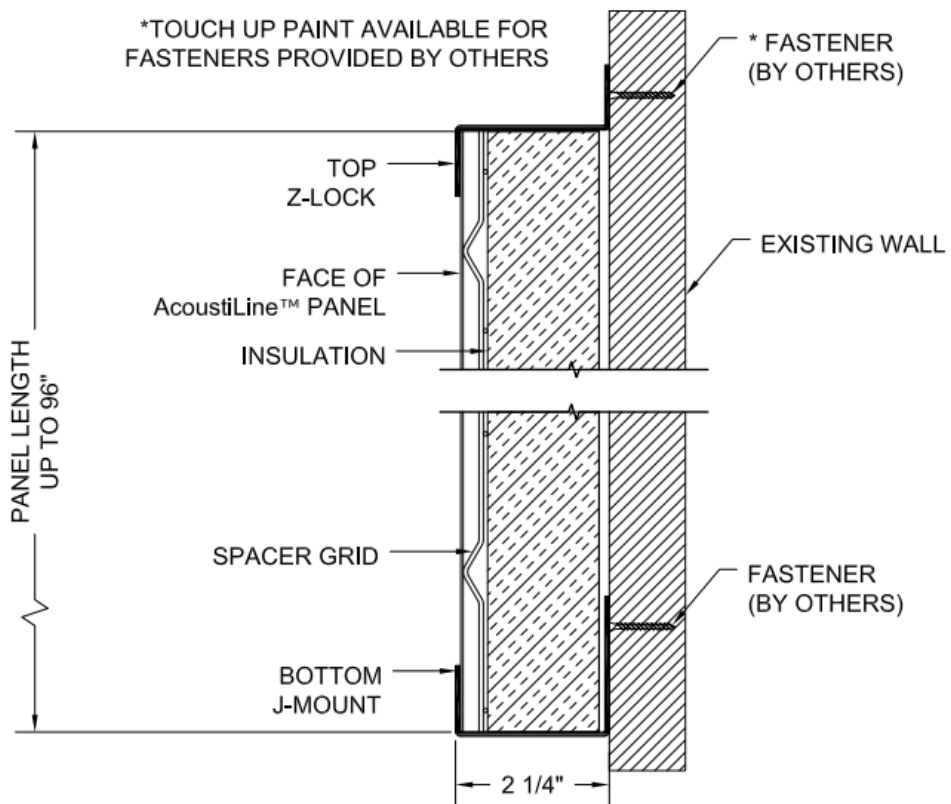


**Figure B: Modules with closed end condition**

**PART 3 – ILLUSTRATIONS:**



**TYPICAL ACOUSTILINE™ ELEVATION**



**TYPICAL ACOUSTILINE™ SECTION**

**GORDON**<sup>®</sup>  
ARCHITECTURAL+ENGINEERED SOLUTIONS

5023 HAZEL JONES ROAD  
BOSSIER CITY, LA 71111  
800-747-8954

WWW.GORDON-INC.COM  
SALES@GORDON-INC.COM

