



# **Alpro Wall Panels**

## **Acoustical Wall Panels**

# **Installation Instructions**



## **PART 1 - STORAGE AND HANDLING**

1. After receiving materials, transfer material immediately to a safe, dry, climate-controlled place where it will not be damaged during storage.
  - a. Do not store Gordon, Inc. product or components outdoors.
  - b. Store Crates and / or Cartons flat in a dry location away from activity.
  - c. Do not store near corrosive material such as acids, salt, fertilizer, etc.
  - d. All materials should be protected during site storage to prevent damage to the finished work from other trades.
  - e. Store materials inside a well-insulated area, away from concrete and masonry and protected from the weather, moisture, soiling, abrasion, extreme temperatures and humidity.
  - f. Protect the strippable protective covering on metal panels from exposure to sunlight, heat, and high humidity.
  - g. Store product in Gordon's unopened packaging until installation of product.
  - h. Prevent contact with material that may cause discoloration, staining, or corrosion.
  - i. Store in flat, fully supported position.
  - j. Store to prevent twisting, bending, abrasion, scratching, and denting.
  - k. Do not drop or stand containers on edges or corners.
  - l. Gordon, Inc. components and systems are not packaged to receive the load of any other material stored or stacked upon it. Therefore, **DO NOT DOUBLE STACK OR STORE OTHER MATERIAL** on top of the packages or crates.
2. Inspect all material prior to installation. Do not install any substandard or unacceptable material. Gordon, Inc. will not be responsible for the cost of repair or removal, or costs resulting from removal of rejected material, or the installation of replacement material.
3. Material should be cleaned thoroughly prior to installation.

## **PART 2 - INSTALLATION**

ALPRO panels shall be installed in accordance with ASTM C-636, "Installation of Metal Ceiling Suspension Systems for Acoustical Tile and Lay-In Ceilings". Below is recommended installation sequence.

### **2.01 - APPLICABLE CODES AND STANDARDS FOR INSTALLATION**

1. Project specifications
2. Architect approved shop drawings
3. American Society for Testing and Materials (ASTM)
  - ASTM E84: Test Method for Surface Burning Characteristics of Building Materials
  - ASTM C-423-90 For Sound Absorption and Sound Absorption Coefficients by the Reverberation Room Method

### **2.02 - SPECIAL TOOLS REQUIRED**

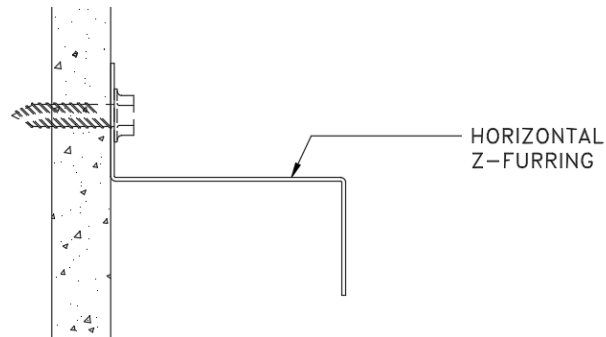
ALPRO Panels can be cut with the use of the following tools:

- Industrial use circular saw with metal cutting wheel
- “Port-a-band” saw
- Hand-held nibblers or shears

## 2.03 - INSTALLATION SEQUENCE

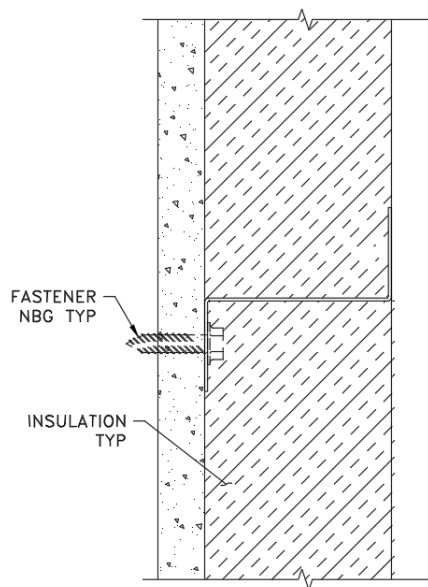
### Step 1:

Typical Alpro Panel installation Z furring installed 24” O.C. to wall using correct fasteners for the wall substrate.



### Step 2:

Sound absorption insulation material is inserted between Z furring.

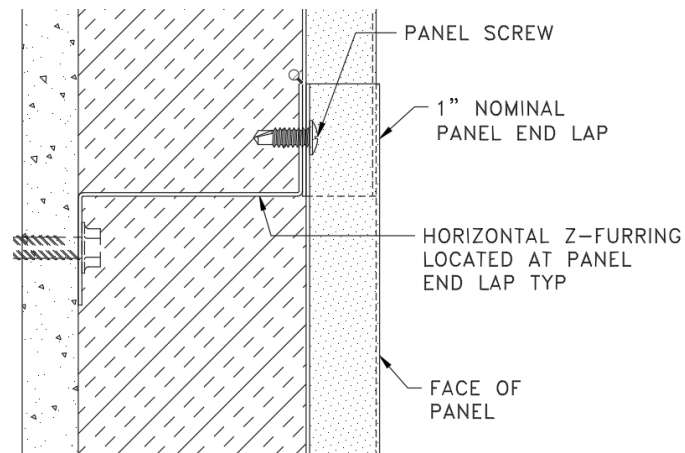


### Step 3:

Continuous J channels are installed at the head and base

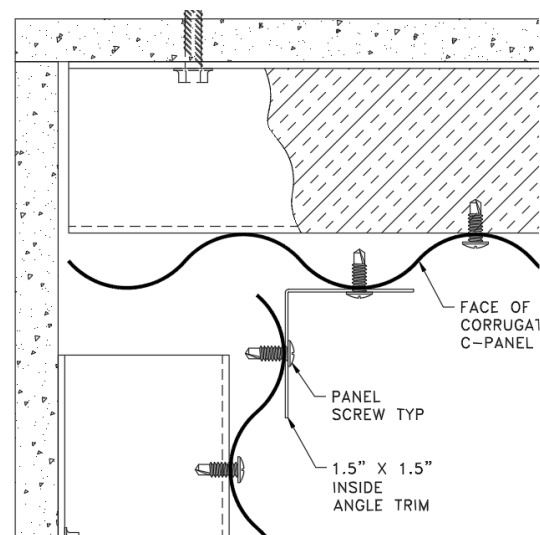
### Step 4:

Perforated metal wall panels are installed vertically, face fastened to Z 12" O.C. Overlap panels 1". Stagger end laps is the suggested method.

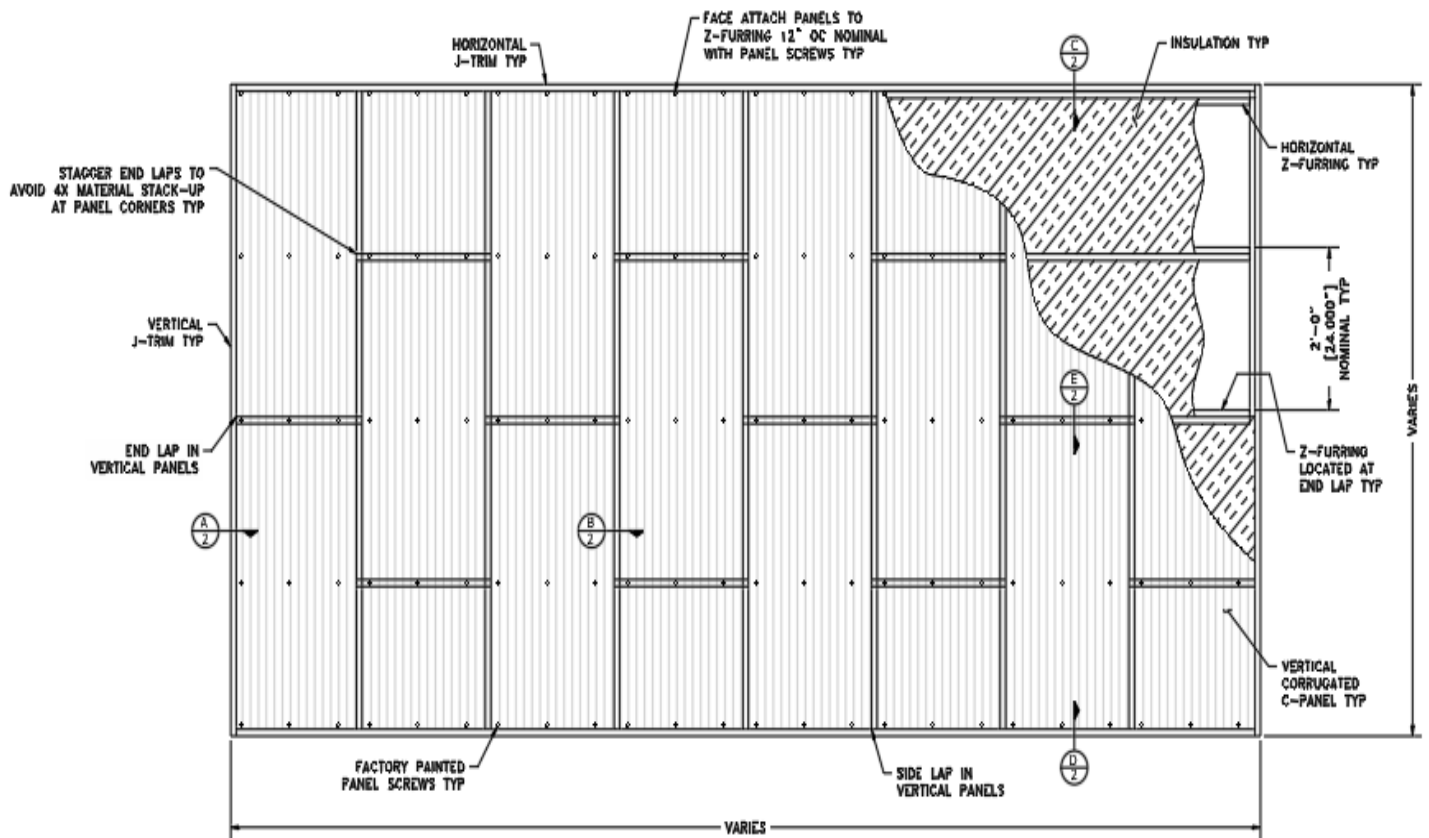


**Step 5:**

Vertical J trims or angles are attached to finish out wall ends or around openings.



## PART 3 - ILLUSTRATIONS



**Figure A:** *Typical Elevation Staggered installation*



5023 HAZEL JONES ROAD  
BOSSIER CITY, LA 71111  
800-747-8954

WWW.GORDON-INC.COM  
SALES@GORDON-INC.COM

