

MILLENNIUM[®]

COLUMN ENCLOSURES

GORDON
INCORPORATED

DESIGN ELEMENTS

MATERIAL:

- .063" aluminum or 18 ga. steel MILLENNIUM[®] expanded to a 1/4" thick tubular design
- Approximately 40% open area

SIZES:

- Minimum diameter = 12"
- Maximum height before stacking is required = 12'-0" above base

CONNECTION SYSTEM:

- N-gage[™] 1

CONFIGURATIONS:

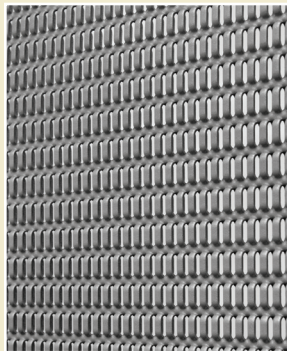
- Quarter Round
- Half Round
- Full Round
- Square
- Custom

LIGHTING:

Backlighting adds stunning visual effects

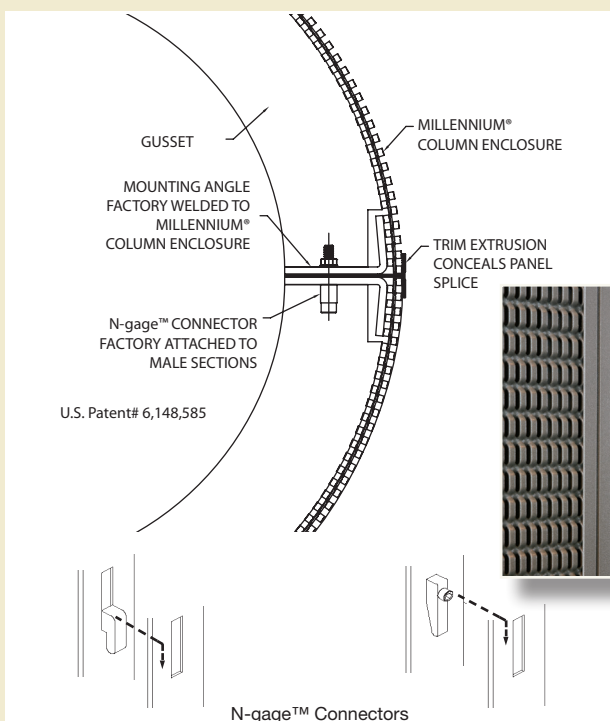
REVEALS:

Horizontal and vertical



PIEDMONT TRIAD INTERNATIONAL AIRPORT
Greensboro, NC

DETAILS



CAPSTAR AT COMPASS PLAZA
Austin, TX



HARRAH'S PHILADELPHIA
Chester, PA



HARPER COLLEGE AVANTE CENTER
Palatine, IL

FINISHES

- Powder Coats
 - Standard
 - ACROGUARD® Enhanced Durability
 - ACROGUARD® Textured
 - ACROGUARD®-UVX Durable Exterior
 - ACROSTAT™ Antimicrobial
- PVDF Organic Coatings
 - 50% Resin-based
 - 70% High Performance Resin-based

GREEN BY DESIGN

- Products contribute to LEED®³ certification
- 30 - 40% recycled aluminum panels
 - 30 - 40% pre-consumer content
 - 0% post-consumer content
- 60% recycled aluminum trims
 - 55% pre-consumer content
 - 5% post-consumer content
- In-House Finishes
 - Biodegradable pre-treatment (No phosphates) powder coat
 - No hazardous waste
 - No VOCs
 - No heavy metals
- Reference website for more information

GORDON
INCORPORATED

5023 HAZEL JONES ROAD, BOSSIER CITY, LA 71111
800.747.8954
800.877.8746 FAX
SALES@GORDON-INC.COM
GORDON-INC.COM
AN EMPLOYEE OWNED COMPANY

¹ Patent #6,148,585

² LEED® is a registered trademark of the U.S. Green Building Council.

