

ACRYLIC COLOR CHART

WATER BASE "WET" PAINTS

GORDON
INCORPORATED

STANDARD FINISHES



FLAT WHITE VX-132
GLOSS 20 +/- 5
LIGHT REFLECTANCE 89



COOL WHITE VX-194
GLOSS 10 +/- 5
LIGHT REFLECTANCE 89



AIRBAR WHITE VX-0208
GLOSS 10 +/- 5
LIGHT REFLECTANCE 88



ULTRA WHITE VX-0211
GLOSS 10 +/- 5
LIGHT REFLECTANCE 88



SILVER SATIN VX-747
GLOSS 40 +/- 5
LIGHT REFLECTANCE 72



NATURAL SATIN VX-802
GLOSS 20 +/- 5
LIGHT REFLECTANCE 73



FLAT ALUMINUM VX-805
GLOSS 10 +/- 5
LIGHT REFLECTANCE 74



BRIGHT SILVER VX-824
GLOSS 10 +/- 5
LIGHT REFLECTANCE 79



DARK BRONZE VX-208
GLOSS 20 +/- 5
LIGHT REFLECTANCE 29

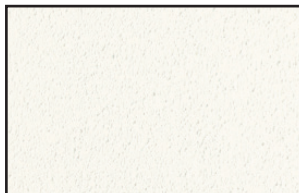


FLAT BLACK VX-401
GLOSS 10 +/- 5
LIGHT REFLECTANCE 15

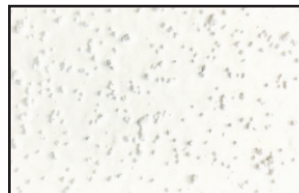
STANDARD TEXTURES (Available on all above colors. Textures provide matte finish.)



LIGHT



MEDIUM



HEAVY

Gordon stocks all standard finishes featured. Finish samples shown on this card are replications of the actual paint finishes and may vary slightly in color and gloss from the actual coating of the substrate. Color samples, supplied on an aluminum panel, provide an actual representation of color, gloss, texture, and hue and are available upon request.

Gloss levels are expressed from measurement on a 60° gloss meter.

ACRYLIC COLOR CHART

TECHNICAL INFORMATION



Gordon acrylic paints are water based, cross-linked coatings and meet USDA, EPA, AAMA and ASTM specifications. Gordon specializes in custom color matching. Please contact Gordon for more information.

TECHNICAL DATA

GLOSS	8 - 75	ASTM D523	TEXTURE RANGE	Wide	
SMOOTHNESS	8 - 10	Ford Scale	ADHESION	5b	ASTM D3359
COLOR RANGE	Wide		IMPACT RESISTANCE	160 /160	ASTM D2794
PENCIL HARDNESS	2H	ASTM D3363	ULTRAVIOLET WEATHERING	700 hrs (50% gloss loss)	ASTM G-53

ENVIRONMENTAL POLICY

Our in-house finishing facility uses only water-soluble materials in our pre-treatment process. All overflow from this process is approved for introduction into our city water treatment plant without adverse impact to the environment. Gordon powder coat finishes are EPA compliant and contribute to the U.S. Green Building initiative.

Gordon's environmental commitment is affirmed within our core *Values, Beliefs, and Principles*. Waste reduction and recycling are key elements of our business culture and are embraced by all Gordon team members.



5023 HAZEL JONES ROAD, BOSSIER CITY, LA 71111
 800.747.8954
 800.877.8746 FAX
 SALES@GORDONINTERIORS.COM
 GORDONINTERIORS.COM
 AN EMPLOYEE OWNED COMPANY

