

EXTERIOR SYSTEMS

GORDON
INCORPORATED



EXTERIOR SYSTEMS

Gordon Exterior Specialties sets the standard for performance-driven, metal products that are attractive, environmentally friendly, and economical.

Gordon provides fully integrated and engineered systems to meet your design criteria. With Gordon, you are assured of perfect fit and finish with consistent color matching of all components.

DESIGN APPLICATIONS

- Soffits
- Column Enclosures
- Wall Panel Systems
- Fascia Systems
- Rain Screens
- Spandrel Panels
- Light Shelves
- Perforated Panels
- Acoustical Treatments
- Porte Cocheres
- Canopies
- Sunscreens
- ALPRO® Corrugated Systems
- MILLENNIUM® Systems
- Screen Walls
- Soffit Vents
- Louvers
- Exterior Accents
- Plaster Trims
- Extruded Aluminum
- Suspension
- Signage
- Sun Shades
- Trellis





CISCA Construction Excellence
Award Winner

L'AUBERGE CASINO & HOTEL
Baton Rouge, LA
Featuring: GreenWood™ Corrugated
Panel and Metal Soffit Systems

PRE-CONSTRUCTION / DESIGN ASSIST SERVICES

Gordon's pre-construction and design assist services help to achieve design objectives without budget compromise. Gordon provides:

- Review of the architect's conceptual design
- Clash detection using 3-D models with drawing review between all participating trades or manufacturers
- Selection of appropriate product(s) to ensure a complete system
- Provide custom product design and finish selection as necessary
- Specification writing assistance
- Design load and wind load requirements and recommended proper suspension and the product necessary to meet specific requirements
- Drawings showing conceptual design details through construction document details
- Budget quotations
- Design for feasibility and fabrication capability
- Engineering calculations and applicable PE stamp for the project location
- Recommend value engineered options
- Project kick-off and coordination meetings available at the manufacturing facility
- Samples and mockups throughout the design process as necessary
- Installation instructions and guidelines for the contractor
- Bill of material reconciliation with the contractor
- LEED¹ documentation



EXTERIOR SYSTEMS

CANOPY SOFFITS



PIER 3
San Francisco, CA
Featuring: Aluma Vault 3000 Ceilings



RIO VISTA RECREATION CENTER
Peoria, AZ
Featuring: ALPRO® Corrugated Panel Canopy



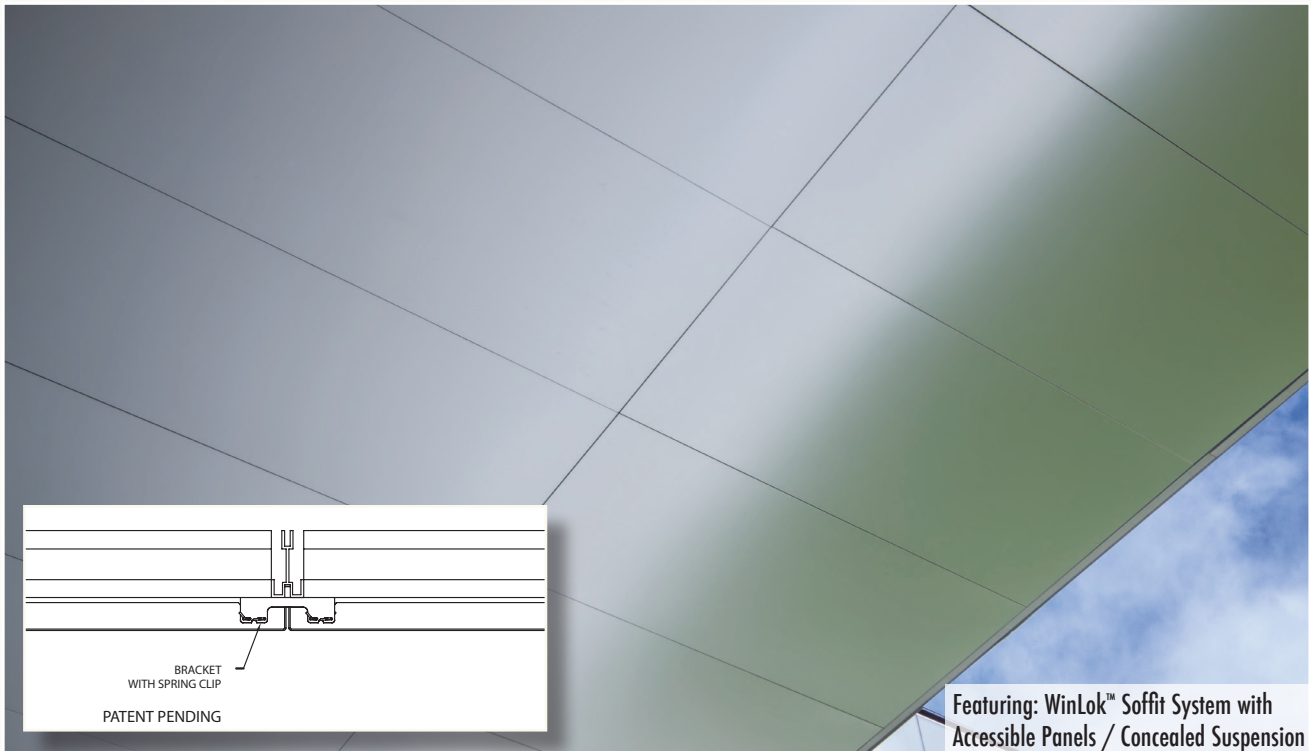
CISCA Construction Excellence
Award Winner

HARMON PLACE AT ARIA RESORT & CASINO, CITYCENTER
Las Vegas, NV
Featuring: Stainless Steel and Aluminum Canopy Soffits



EXTERIOR SYSTEMS

SOFFITS





EXTERIOR SYSTEMS

SOFFIT-SHIELD



WILLIS KNIGHTON SOUTH EMERGENCY ENTRANCE
Shreveport, LA
Featuring: Soffit & Fascia Cladding,
Column Enclosures, & Soffit Vents





Gordon SOFFIT-SHIELD™ is the fascia and soffit solution to protect vertical and horizontal exterior building surfaces at times of devastating environmental events.

- Design Load Performance
- Meets the applicable requirements of Florida Building Code Test Protocols of design loads of +/- 125 psf
 - Large and Small Missile Impact Resistant
 - Hurricane Resistant up to Category 5
 - Tornado Resistant up to F4 (<222 MPH)
- Designed to maintain building integrity
- Sleek and Stable

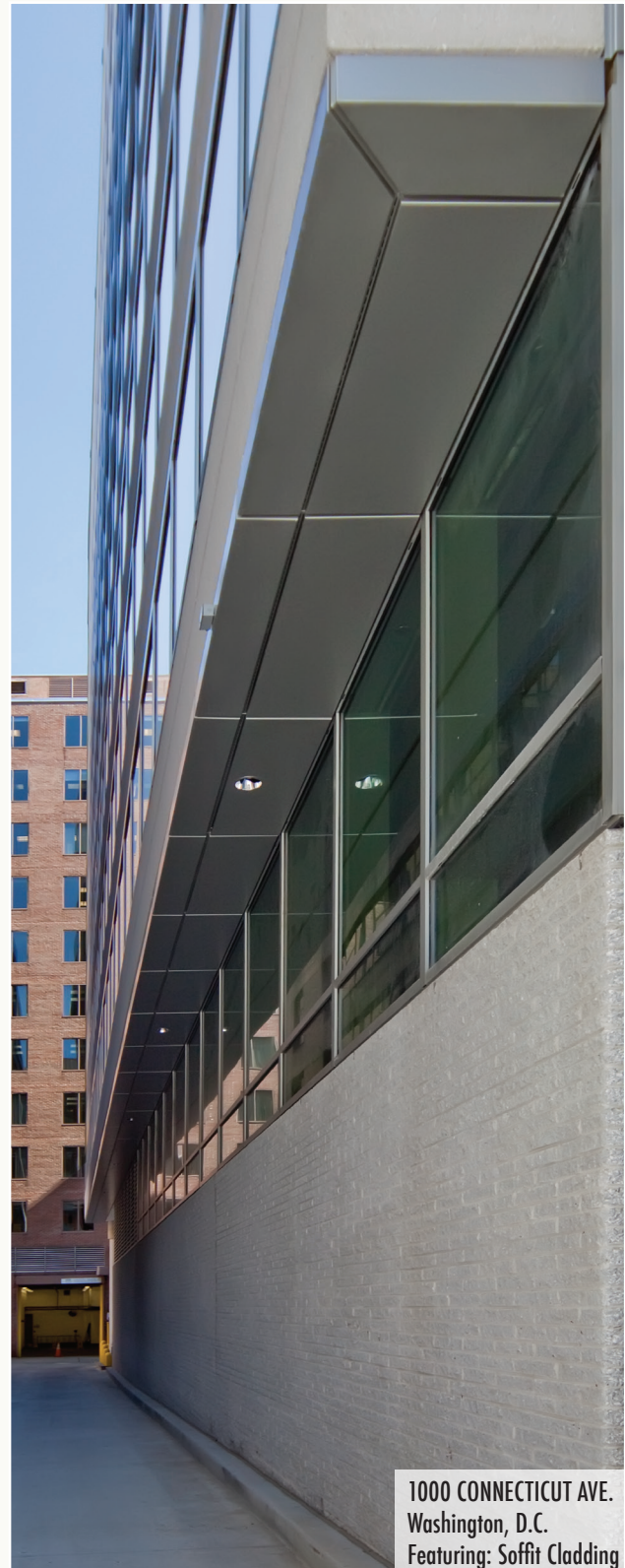
Miami-Dade County, Florida Approved

Notice of Acceptance

N.O.A. No. 13-0813.24

Expiration Date: August 14, 2018

Patent No.: US 8,166,728 B1



1000 CONNECTICUT AVE.
 Washington, D.C.
 Featuring: Soffit Cladding

EXTERIOR SYSTEMS

SCREENWALLS



CAPSTAR AT COMPASS PLAZA
 Austin, TX
 Featuring: MILLENNIUM® Screenwalls
 & MILLENNIUM Column Enclosures



CISCA Construction Excellence
Award Winner

MILLENNIUM® panel systems create the decorative sunscreen facade for the stairwells and walls on the building exterior.



MILLENNIUM has a tubular slit pattern that is 40% open. When viewing the panels directly, the panels appear opaque. At angles, panels appear transparent.



CALIFORNIA STATE UNIVERSITY, GOLDEN EAGLE
Los Angeles, CA
Featuring: MILLENNIUM® Screenwalls

EXTERIOR SYSTEMS

COLUMN ENCLOSURES



U.S. FEDERAL COURTHOUSE
Jackson, MS



BELAMAR HOTEL
Manhattan Beach, CA



CAPSTAR AT COMPASS PLAZA
Austin, TX



FIRST GUARANTY BANK
Ponchatoula, LA



THE COMMUNITY COLLEGE OF BALTIMORE COUNTY, LEARNING CENTER
Catonsville, MD



DR. HENRY WISE HIGH SCHOOL
Upper Marlboro, MD



LOU RUVO CENTER FOR BRAIN HEALTH
Las Vegas, NV

EXTERIOR SYSTEMS

MISCELLANEOUS



PERFORATED SOFFITS



SOFFIT VENTS



PERFORATED SCREENWALLS



PERFORATED SIGNAGE



MILLENNIUM STAIRWELL



CORRUGATED SCREENWALLS



CORRUGATED SHADES



DECORATIVE SHADE ACCENTS



CORRUGATED CANOPY SOFFITS



COLUMN ENCLOSURES WITH METAL CAPITALS & SOFFIT VENTS



NEW ORLEANS CONVENTION CENTER
New Orleans, LA
Featuring: Column Covers

FINISHES

- Powder Coats
 - ACROGUARD®-UVX Durable Exterior
 - ACROGUARD® Patina / Weathered Look Metal
 - ACROGUARD® Textures
- Pre-Coated Paints
 - PVDF Organic Coatings
- Greenwood™ - Wood Grain Films and Paints
- Ceramatech™ Durable Porcelain
- Mechanical & Enhanced Finishes
 - Directional
 - #3 Directional Brushed Finish
 - #4 Directional Brushed Finish
 - #6 Directional Brushed Finish
 - Non-directional
 - #8 Mirror Finish
 - Random Orbital Finish
 - Random Anti-Graffiti Finish
 - Patterned
 - Textured
 - Embossed
 - Anodized and other Color Enhancements

GORDON[®]
INCORPORATED

5023 HAZEL JONES ROAD, BOSSIER CITY, LA 71111
800.747.8954
800.877.8746 FAX
SALES@GORDON-INC.COM
GORDON-INC.COM
AN EMPLOYEE OWNED COMPANY

¹ LEED is a registered trademark of the U.S. Green Building Council.

