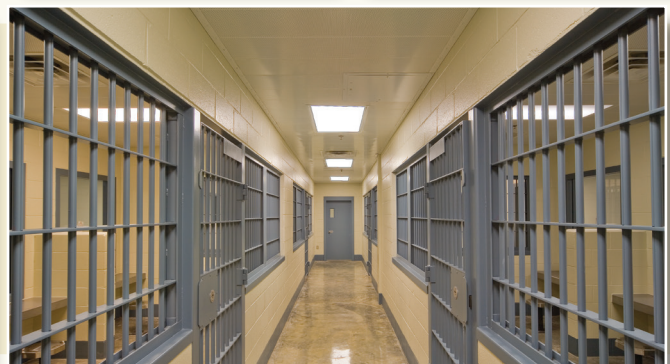
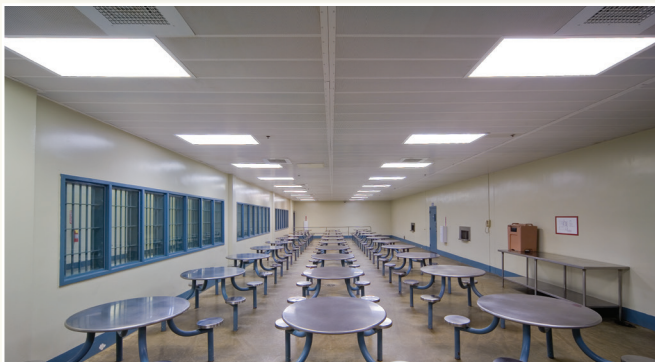


CEL•LINE[®]

METAL PLANK CEILINGS FOR HIGH SECURITY ENVIRONMENTS

GORDON
INCORPORATED



CEL•LINE®

METAL PLANK CEILINGS FOR HIGH SECURITY ENVIRONMENTS

CEL•LINE HIGH SECURITY CEILINGS FEATURE:

- Heavy gauge steel or aluminum planks with matching angle and tee suspension systems for unsupervised areas. Perforated planks with acoustical media provide noise control.
 - Cells
 - Holding Areas
 - Showers / Toilets
 - Visitation Areas
 - Dayrooms
- Shiplap design prohibiting passage of contraband to the plenum
- Factory finished components
- Heavy duty structural performance
- Green Building Compliant and IAQ Friendly
- Specialized systems available for use in:
 - U.S. Marshalls Service Facilities (USMS)
 - State of New York Department of Correctional Service Facilities (OGS)
 - City of New York Department of Corrections Facilities



PRODUCT INFORMATION

SIZE OPTIONS

- 12", 18", or 24" wide, in lengths up to 12'
- Metric sizing also available

PLANK THICKNESS, COMPOSITION AND FINISHES

- Materials:
 - Galvaneal Steel – 12 to 18 ga
 - Aluminum - .040" to .125", 5052 H32 Alloy
 - Stainless Steel – 14 to 18 ga, type 304 - #4 or #2b finish
 - Consult factory for custom gauges and materials
- Perforated (acoustical) or unperforated
- High durability security white powder coat finish
- Custom colors available

PERFORATION PATTERNS

- .125" diameter holes on .336" 45° diagonal centers, 12.5% open area
- Custom patterns available by request

FASTENING OPTIONS

- Exposed Torx^{®1} Tamper Proof security screws
- Concealed hold down system

ACOUSTICAL MEDIA

- Minimum 3 pound density, Class A rated fiberglass sound absorbing pads wrapped in fire retardant black polyethylene
- Non-woven acoustical fabric

ACOUSTICAL RATINGS

- NRC Noise Reduction Coefficient of 0.70-1.00 (varies by perforation pattern & acoustical media)
- STC Sound Transmission Coefficient 14 ga Steel Backing Plate available for a STC of 40-44

FIRE RATINGS

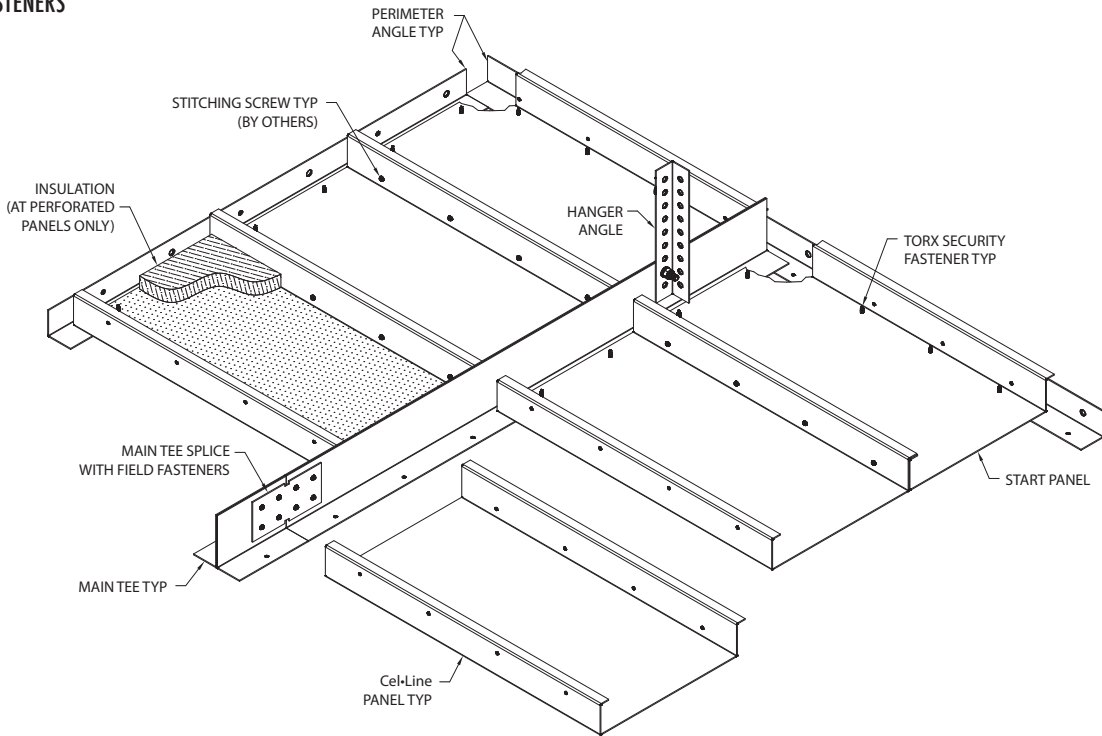
- Panels have a Class A rating when tested in accordance with ASTM E84

SYSTEM COMPATIBLE ACCESSORIES

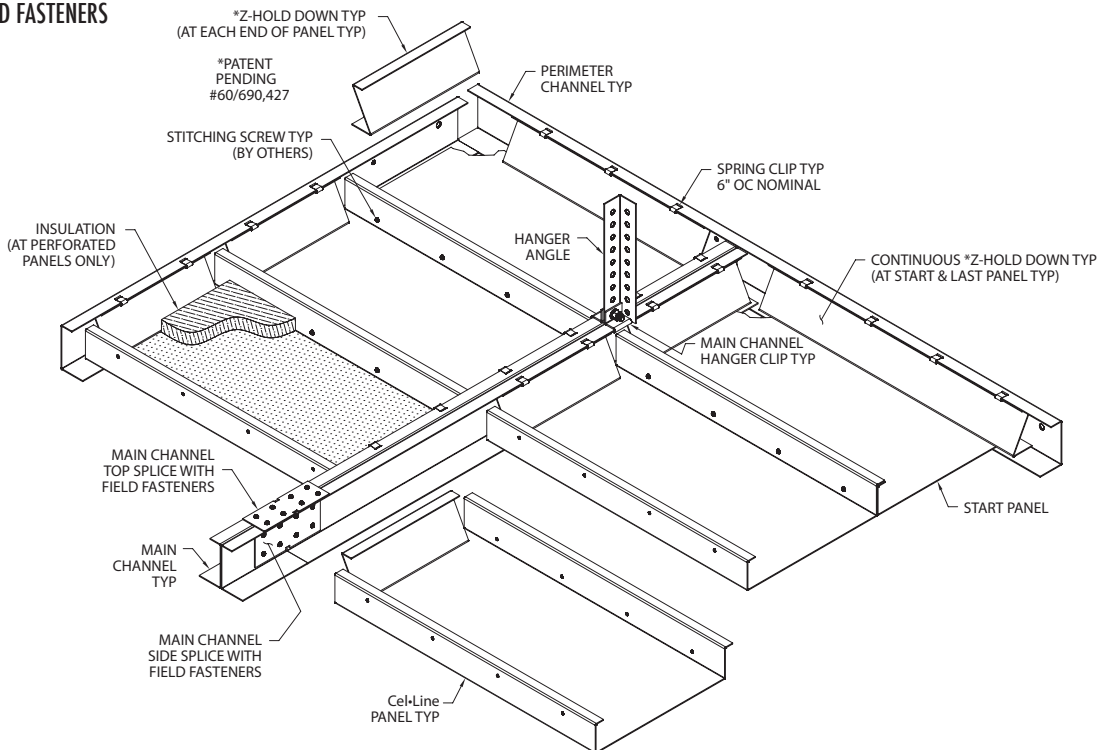
- Cel•Lite light fixtures
- Air diffusers and returns
- Piano hinged, locking access doors
- Security screwed access plates
- 14 ga Steel Backing Plate

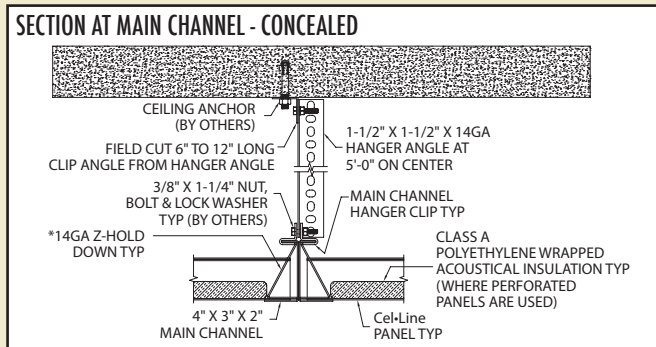
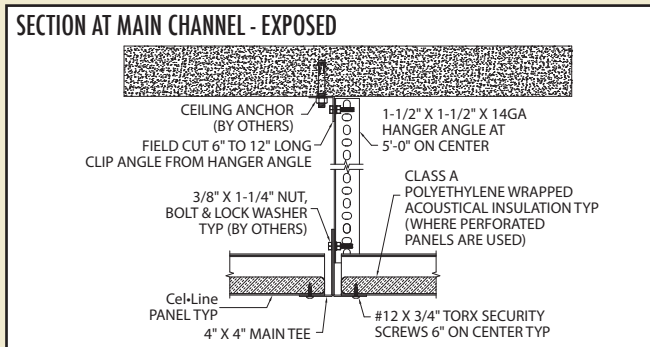
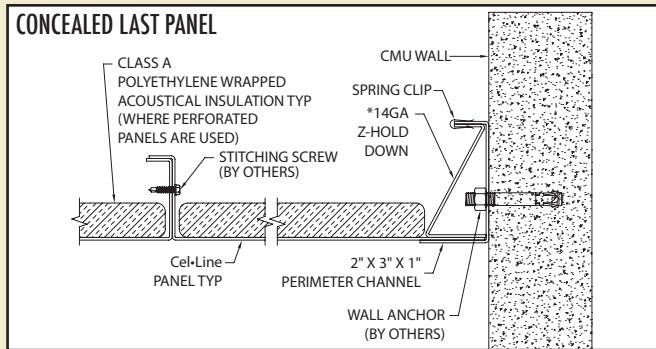
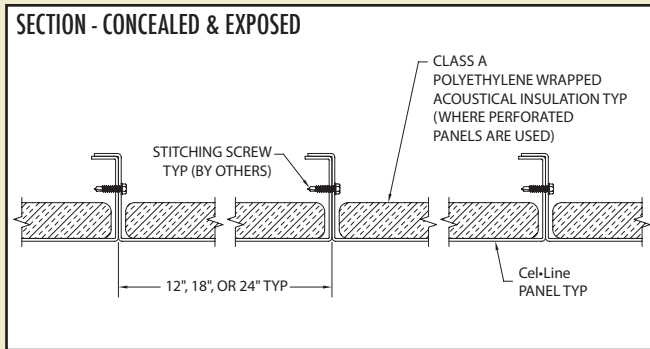
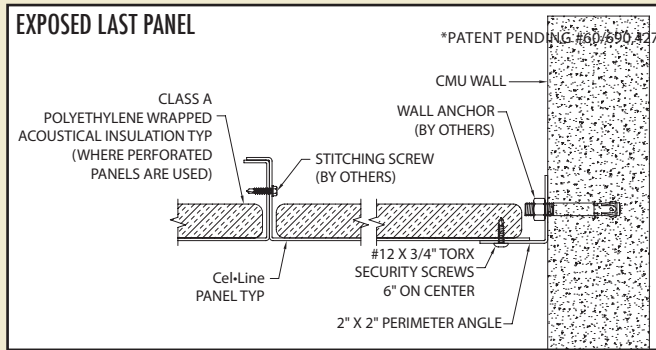
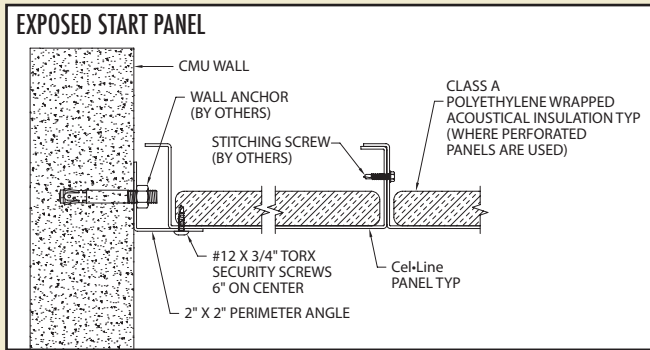
DETAILS

EXPOSED FASTENERS



CONCEALED FASTENERS





GREEN BY DESIGN

- LEED^{®2} credits available
- 57% - 87% recycled steel coil
 - 7% - 14% pre-consumer content
 - 50% - 73% post consumer content
- 96% recycled aluminum coil
 - 48% pre-consumer content
 - 48% post consumer content
- In-House Finishes
 - Biodegradable pre-treatment (No phosphates)
 - No hazardous waste
 - No VOCs
 - No heavy metals
- Reference our sustainable products brochure and website for more information. Recycled content values are subject to change. Contact us for accurate values or job specific requirements.

GORDON[®]
INCORPORATED

5023 HAZEL JONES ROAD, BOSSIER CITY, LA 71111
800.747.8954
800.877.8746 FAX
SALES@GORDON-INC.COM
GORDON-INC.COM
AN EMPLOYEE OWNED COMPANY

