

GORDON

55mm Grid Systems



GORDON
CLEANROOM PRODUCTS DIVISION

55mm Grid

Innovative new design

55mm grids by Gordon were developed to provide all the advantages and premium appearance of fully integrated cleanroom ceiling systems that are an affordable alternative to standard 2" ceiling grids. Suitable for all cleanroom applications, Gordon's 55mm ceilings combine extruded aluminum grid members that join together with an innovative connecting system, factory-installed teardrop style lighting, and fire sprinklers.

Available in gasket-seal or gel-seal versions, the 55mm grids by Gordon install faster than conventional 2-inch cleanroom ceiling grids – *and the lighting and fire sprinklers are already installed!*

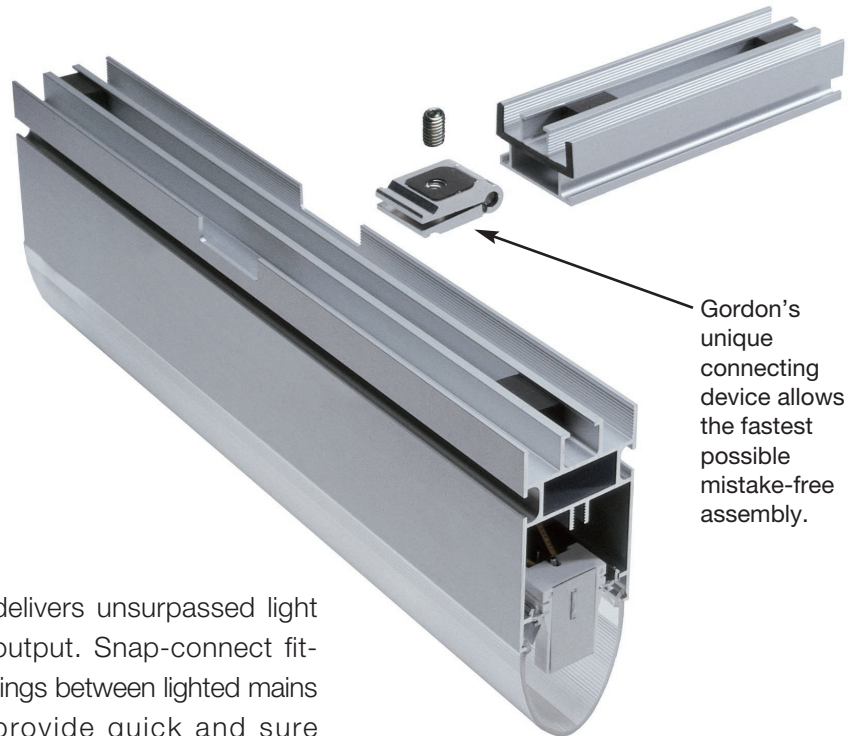
Consider the attributes of the Gordon 55mm ceiling system and the benefits they provide.

■ Rapid, easy installation.

Factory-installed connectors are designed for simple, mistake-free assembly. Tightening one screw engages the unique hinge-lock grid connector, providing self-aligning, rapid assembly. 55mm Systems install in half the time of conventional 2-inch grids, resulting in significant labor savings.

■ Factory installed lighting

is integrated into the 55mm main runners, and



Gordon's unique connecting device allows the fastest possible mistake-free assembly.

delivers unsurpassed light output. Snap-connect fittings between lighted mains provide quick and sure electrical connection.

■ Quick-install fire sprinkler fixtures

by Flexhead are FM approved and feature a 6-foot long stainless steel supply pipe. Minimal installation time and simple relocation pay dividends that outpace the cost.

■ Guaranteed results.

A fully integrated system from a single source assures the most attractive cleanroom ceiling installation without the worry of compatibility between all the various components. Utilize optional, uniquely designed 55mm perforated face screens to achieve an unequalled premium appearance.

■ Safety and reliability

is assured because the Gordon 55mm lighted grid is U.L. approved, and the sprinkler fixtures are Factory Mutual approved.

■ Completely caulk-free

gel-seal design speeds installation time and eliminates the risk of potential contamination from sealant materials.

And it's cost effective!

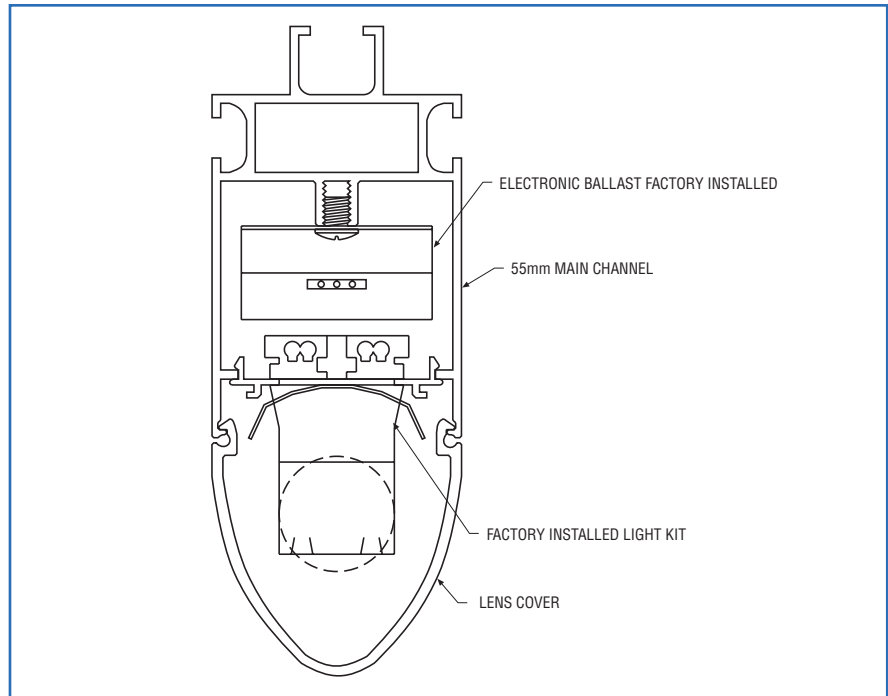
Compare the cost of a 55mm to a conventional 2" ceiling system and its value is apparent. Add the costs of 2" grid materials, light fixtures, sprinkler drops, light fixture installation, sprinkler installation and the more time-consuming grid installation. Then compare that total to the cost of a Gordon 55mm lighted grid, and consider all of the added benefits of a single source ceiling system provider. The combination of all these features and benefits add up to make 55mm ceiling systems by Gordon the best value alternative for your cleanroom.

Lighting

Gordon's 55mm Grids deliver unsurpassed light output. Designed by lighting professionals, 55mm Grids achieve the highest attainable light levels in a cleanroom environment. Typical cleanroom light intensities up to 100 foot/candles can be met by the 55mm with light tracks spaced only 4-feet on center. When greater light levels are desired, we are able to utilize the 2-foot light track spacing to deliver higher light intensity than any other provider.

55mm fluorescent lighting is fully factory installed within the main runners. Gordon's **UL-listed** light tracks feature quick-connect electrical fittings for rapid and clean system installation, electronic ballasts, and specular lamp reflectors. Teardrop lenses are designed for

Lighted main section detail



easy snap-in installation and maximum light diffusion.

Wiring penetrations are factory fabricated and assembled utilizing seal-tight cable fittings to provide leak-proof supply power hook up.



Fire Protection

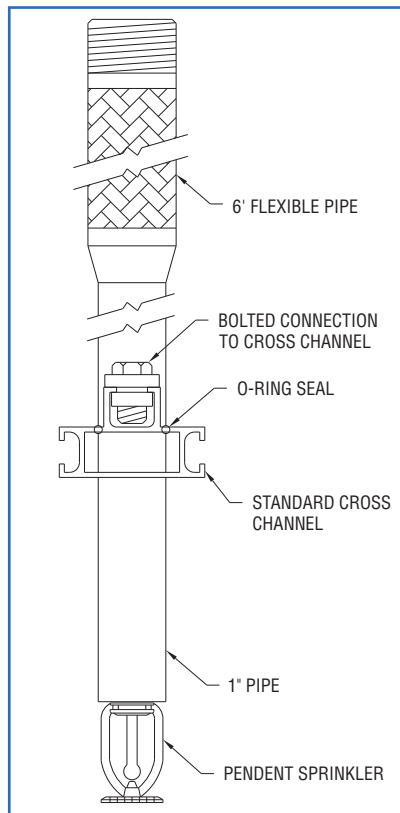


Gordon's design engineers have teamed with Flexhead Industries to incorporate leading edge fire protection into the 55mm Lighted Grid ceiling systems. These custom designed sprinkler fixtures perform the dual functions of providing easy to install FM-approved fire protection and structural reinforcement at grid penetrations.

Each Gordon 55mm sprinkler fixture features:

- a quick response sprinkler head;
- a specially designed, 16-inch long, narrow gauge sprinkler drop to allow for minimal interference with filters or other ceiling insertions;
- a 6 feet long flexible stainless steel supply pipe for optimum ease of original installation and relocation;
- FM (Factory Mutual) approval.

Sprinkler fixtures mount to factory-fabricated sprinkler cross tees through machined penetrations.



System Detail

The **55mm Gel-seal Grid** assembles to form a continuous channel throughout the ceiling to be filled with gel. Employing micro cellular urethane gaskets at every joint seals the system liquid-tight, eliminating the need for time consuming caulking in preparation for the gel pour. The 55mm Gel-seal Grid uses 30% less gel than conventional 2-inch gel grids, reducing both material and installation costs.

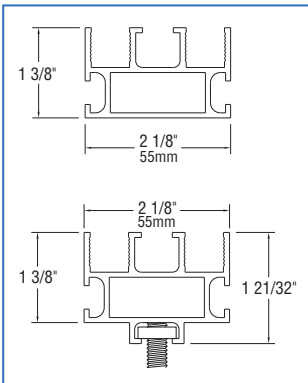
55mm Gasket-seal Grid

utilizes gasket tapes affixed to the grid members to create the seal between filters, blank panels and the grid. As with all Gordon gasketed grids, gasket materials are available to meet any customer-specified performance standards.

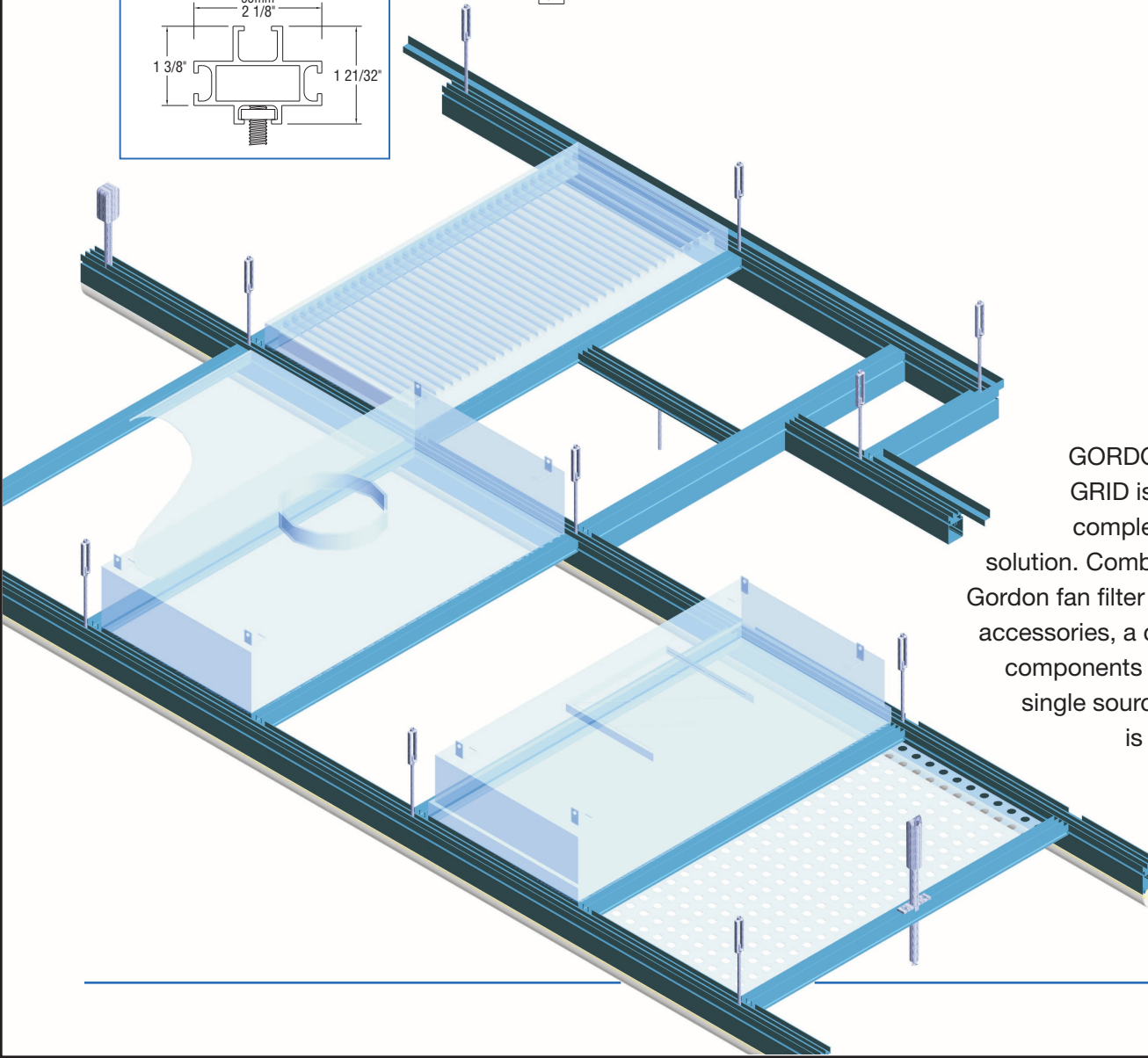
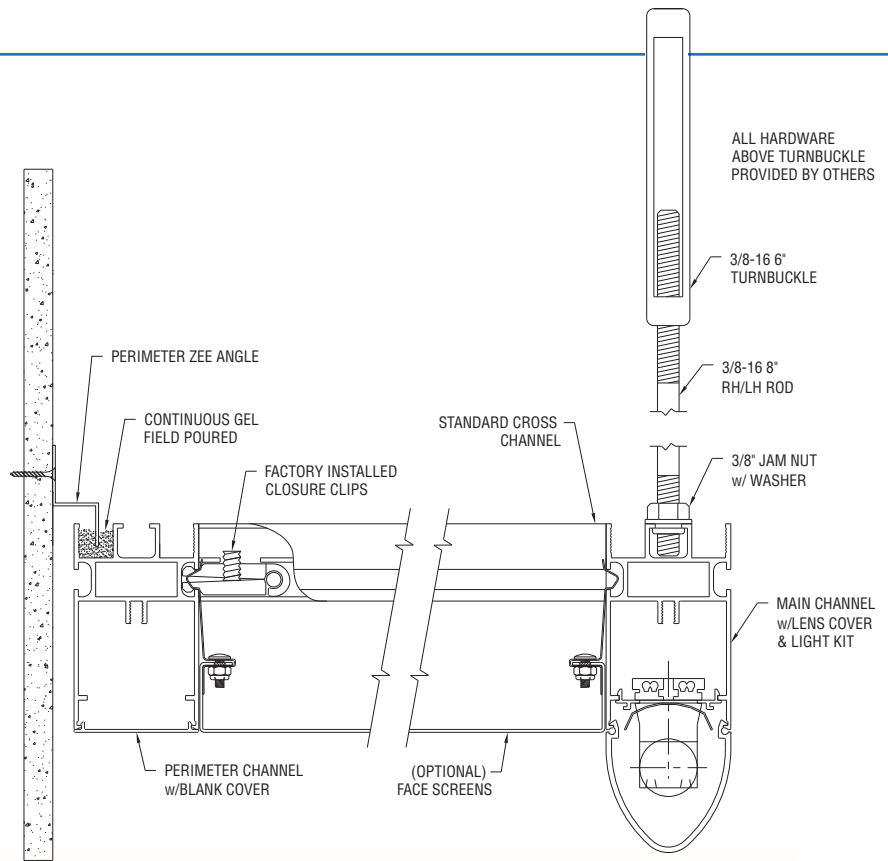
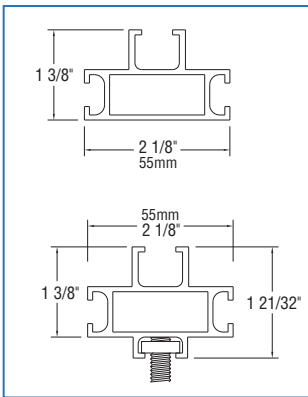
(Cross members shown with threaded rod assembly for Automated Material Handling System (AMHS) and racking support.)

GORDON
CLEANROOM PRODUCTS DIVISION

Gel

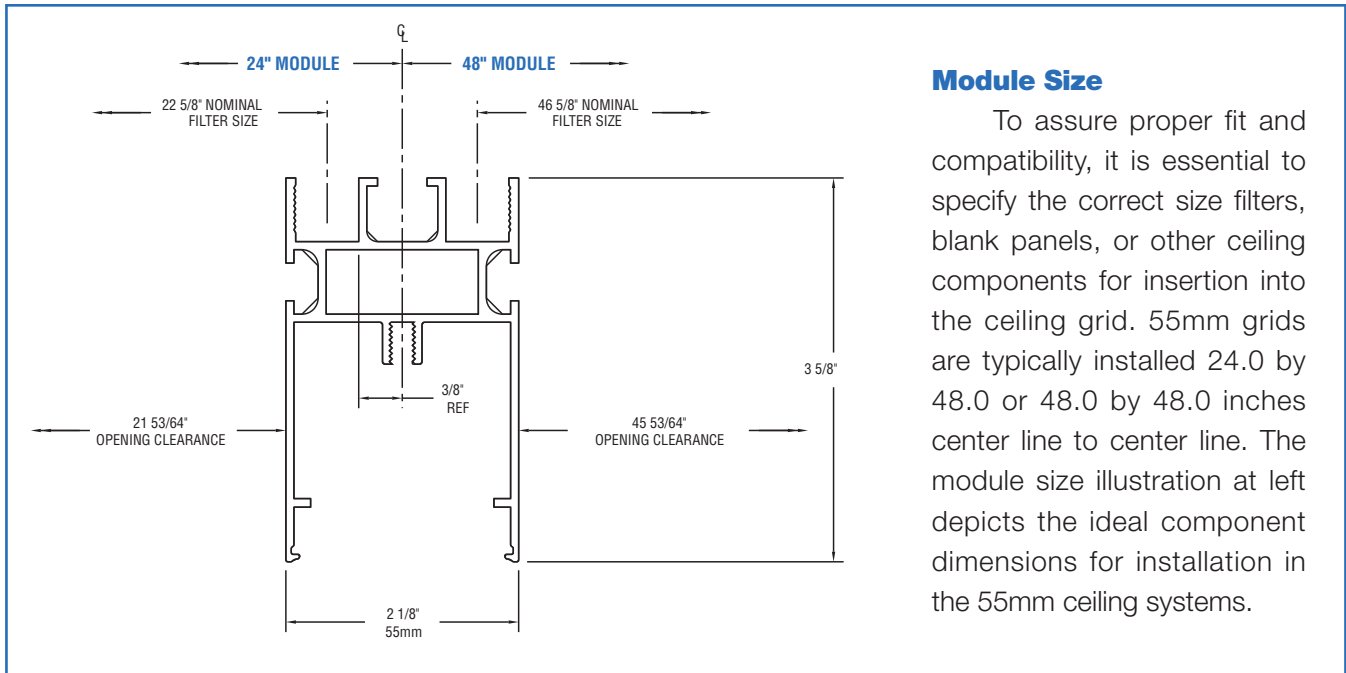


Gasket



GORDON 55mm GRID is part of a complete ceiling solution. Combined with Gordon fan filter units and accessories, a complete, components matched, single source system is available.

Grid module size detail



Module Size

To assure proper fit and compatibility, it is essential to specify the correct size filters, blank panels, or other ceiling components for insertion into the ceiling grid. 55mm grids are typically installed 24.0 by 48.0 or 48.0 by 48.0 inches center line to center line. The module size illustration at left depicts the ideal component dimensions for installation in the 55mm ceiling systems.

**Optional Face Screens
The Finishing Touch**

To achieve the highest aesthetic and optimal airflow uniformity, Gordon recommends our optional perforated air diffuser face screens. Developed utilizing a carefully engineered perforation pattern, our air diffuser face screens contribute just enough backpressure to equalize leaving velocities throughout the ceiling. Installing the face screens also provides a uniquely uniform and attractive roomside finish.

Air diffuser face screens install quickly and easily. Four spring clips allow for rapid insertion and then hold the grilles securely in place. Removal is made easy by retracting the spring clip with a simple tool and drawing the screen down to release.

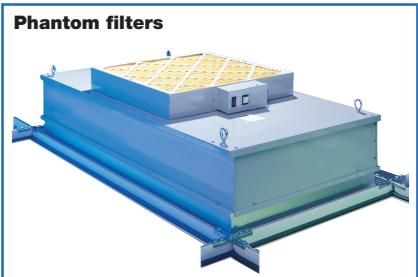
Blank Panels

Gordon offers blank-off panels for use with all types of grid systems. We offer knife edge pans designed for insertion into 55mm Gel Grid. Fabricated of aluminum or steel, these inverted pans have welded corners and are painted and sealed to guarantee air tightness.

For 55mm Gasketed Grid, Gordon offers panels of all types. We feature our exclusive Alpolic™ solid-core aluminum skin panels with fluorocarbon finish. Also available are standard duty or walkable honeycomb core panels with aluminum skins. Specialty panel designs to meet job specific requirements are gladly provided.



Gordon also manufactures compatible wall systems and the ultra-quiet PHANTOM line of fan-powered filter modules. Ask your Gordon Cleanroom Products representative for details.



P.O. Box 4347
Shreveport, Louisiana 71134
5023 Hazel Jones Road
Bossier City, Louisiana 71111

Tel: 888.315.1561
Fax: 800.877.8746
www.gordongrid.com
sales@gordongrid.com