

COLUMN COLLARS



DESIGN ELEMENTS:

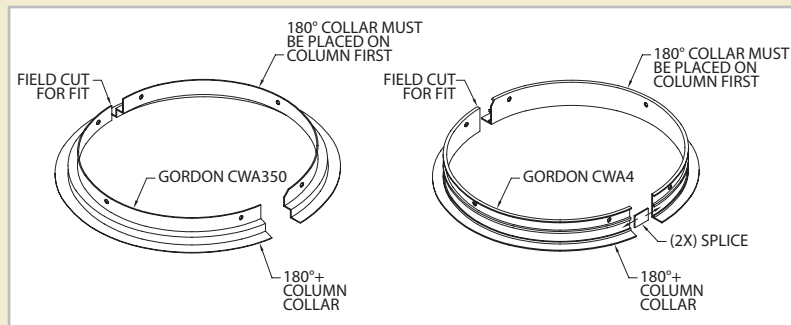
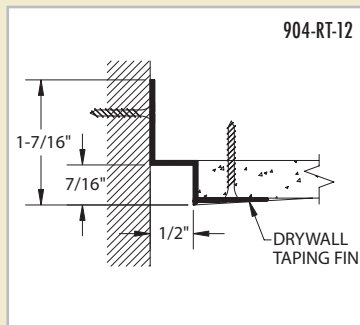
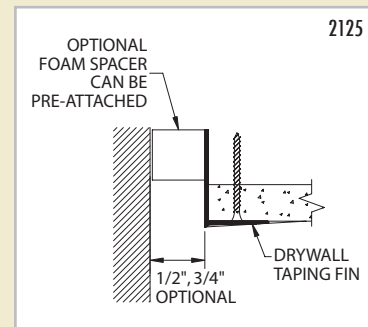
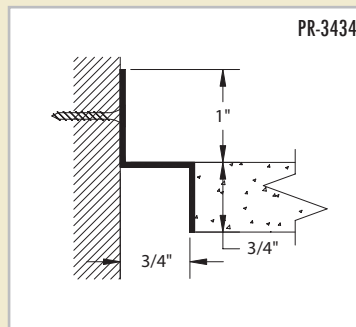
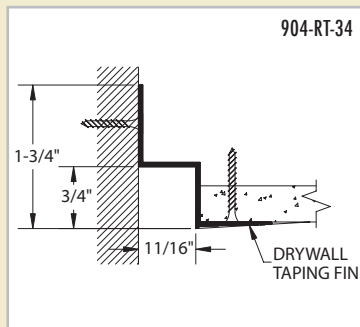
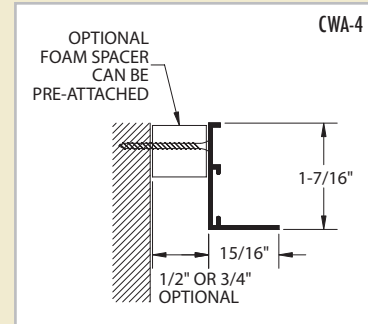
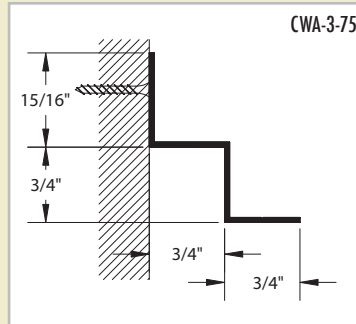
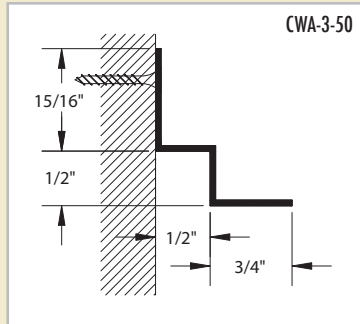
- Column Collars are used to trim out and provide a detailed interface between columns and perimeters for both acoustical and drywall ceiling applications.
- Column Collars are extruded aluminum, which provides a crisp, sharp appearance that articulates attention to detail.
- Available curved or straight
- Reveal or non-reveal details available
- Finished to match the ceilings suspension of your choice
- Custom colors are available
- Contact factory for radius capabilities



COLUMN COLLARS

GORDON
INCORPORATED

PROFILES



FINISHES

- Powder Coats
 - Standard
 - ACROGUARD® Enhanced Durability
 - ACROGUARD® Textured
 - ACROGUARD®-UVX Durable Exterior
 - ACROSTAT™ Antimicrobial
- Acrylic Water Base "Wet" Paints
 - Standard
 - Custom Matched
 - Textured
- PVDF Organic Coatings
 - 50% Resin-based
 - 70% High Performance Resin-based
- Anodized and other Color Enhancements
- Primed

GREEN BY DESIGN

- Products contribute to LEED®¹ certification
- 38.1% recycled aluminum extrusions
 - 29.4% pre-consumer content
 - 8.7% post consumer content
- In-House Finishes
 - Biodegradable pre-treatment (No phosphates)
 - No hazardous waste
 - No VOCs
 - No heavy metals
- Reference our sustainable products brochure and website for more information. Recycled content values are subject to change. Contact us for accurate values or job specific requirements.

¹ LEED® is a registered trademark of the U.S. Green Building Council.