

# FINAL FORMS II

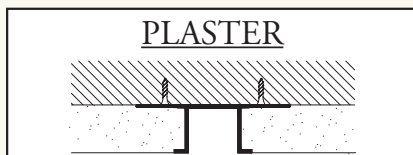
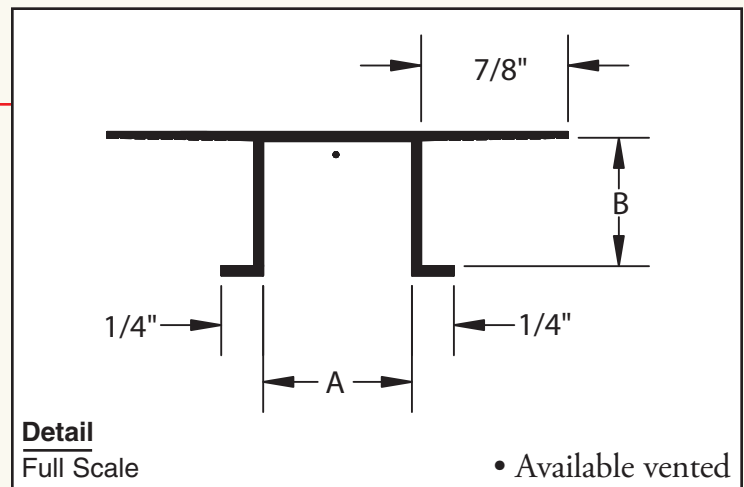
## UNIQUE TRIMS AND SHAPES IN PREFINISHED ALUMINUM

**GORDON**  
INTERIOR SPECIALTIES DIVISION

PURCHASE  
FINAL FORMS  
ON-LINE!

### R REVEAL TRIMS

Trims are available in clear satin anodized or painted finishes.



PART NUMBER	A	B
RH-1434 •	3/4"	1/4"
RH-1415 •	1-1/2"	1/4"
RH-1430 •	3"	1/4"
RH-3812 •	1/2"	3/8"
*RP-3414	1/4"	3/4"
RP-3412 •	1/2"	3/4"
RP-3434 •	3/4"	3/4"
RP-3410 •	1"	3/4"
RP-3415 •	1-1/2"	3/4"
RP-3420 •	2"	3/4"
RP-3425 •	2-1/2"	3/4"
RP-3430 •	3"	3/4"
RP-3440 •	4"	3/4"
RP-3460 •	6"	3/4"
RS-1010 •	1"	1"
RS-1030 •	3"	1-1/8"
RS-12520 •	2"	1-1/4"
RS-12530 •	3"	1-1/4"
RS-12560 •	6"	1-1/4"

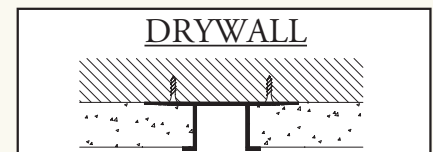
#### PLASTER

Custom trim used to provide various widths feature reveals in ceiling, soffits, and walls. When vented, the reveal will act as an air vent and functions as a plaster screed.

#### DRYWALL

Custom trim to be used as a feature reveal in vertical and horizontal drywall conditions.

\*Appearance of part is different than detail above. See page 3 of the Shapes Catalog.



PART NUMBER	A	B
RD-1212 •	1/2"	1/2"
RD-1234 •	3/4"	1/2"
RD-1210 •	1"	1/2"
RD-1215 •	1-1/2"	1/2"
RD-1220 •	2"	1/2"
RD-1230 •	3"	1/2"
RD-1240 •	4"	1/2"
RD-5812 •	1/2"	5/8"
RD-5834 •	3/4"	5/8"
RD-5810 •	1"	5/8"
RD-5815 •	1-1/2"	5/8"
RD-5820 •	2"	5/8"
RD-5830 •	3"	5/8"
RD-5840 •	4"	5/8"

### GUIDE SPECIFICATION

Wall trims, where indicated on drawings, shall be manufactured by GORDON, INC. #\_\_\_\_\_. Material shall be manufactured of extruded aluminum, alloy 6063-T5, .050" thick with clear anodized 200-R1 finish. Secure 10'-0" lengths of materials to framing with screws (or other approved methods) at 8" o.c. All butt joints are to be neat and tight. All corners are to be mitered. Wipe excess plaster from surfaces immediately.

NOTE: Where trims are used with exterior plaster and perform a "drip" function, lath and felt shall lap over vertical leg of trim to assure water tightness.

# FINAL FORMS II

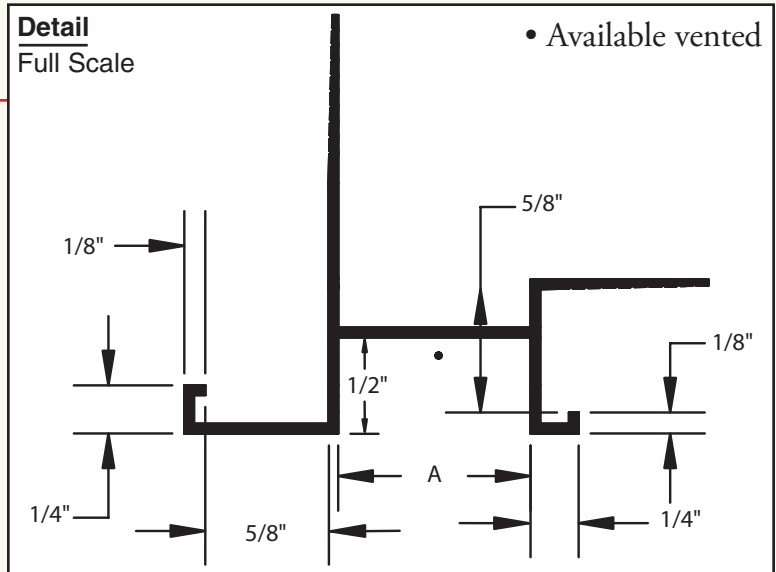
## UNIQUE TRIMS AND SHAPES IN PREFINISHED ALUMINUM

**GORDON**  
INTERIOR SPECIALTIES DIVISION

PURCHASE  
FINAL FORMS  
ON-LINE!

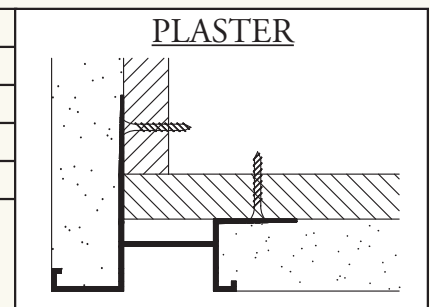
### S REVEAL TRIMS

Trims are available in clear satin anodized or painted finishes.



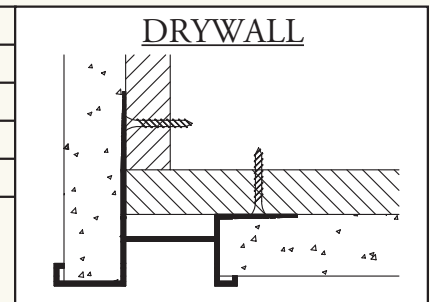
PART NUMBER	A
SP-3434 •	3/4"
SP-3410 •	1"
SP-3420 •	2"
SP-3430 •	3"

Edge trim utilized as exterior drip trim . . . available with various width reveals . . . functions as a screed when used with plaster. When vented, the reveal will act as an air vent.



PART NUMBER	A
SD-5834 •	3/4"
SD-5810 •	1"
SD-5820 •	2"
SD-5830 •	3"

Edge trim utilized as interior fascia/soffit transition . . . creates a recess at soffit line.



### GUIDE SPECIFICATION

Wall trims, where indicated on drawings, shall be manufactured by GORDON, INC. #\_\_\_\_\_. Material shall be manufactured of extruded aluminum, alloy 6063-T5, .050" thick with clear anodized 200-R1 finish. Secure 10'-0" lengths of materials to framing with screws (or other approved methods) at 8" o.c. All butt joints are to be neat and tight. All corners are to be mitered. Wipe excess plaster from surfaces immediately.

NOTE: Where trims are used with exterior plaster and perform a "drip" function, lath and felt shall lap over vertical leg of trim to assure water tightness.