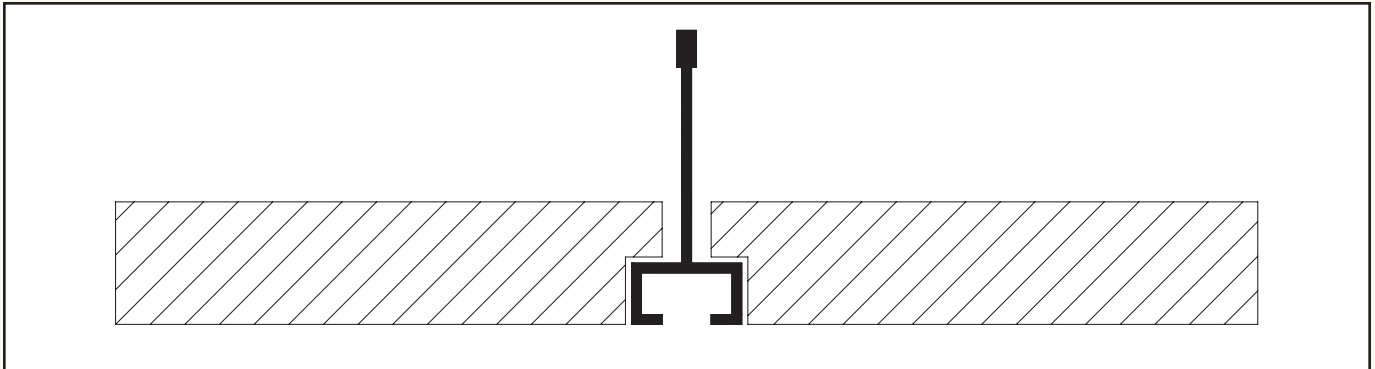


SERIES A

SUSTAINABLE GRIDS IN EXTRUDED ALUMINUM



SERIES A is a narrow line design for use with regular acoustical tile. The grid slot will accept a bolt head permitting unlimited fastening and unfastening of partition headers without defacing grid or acoustical materials.

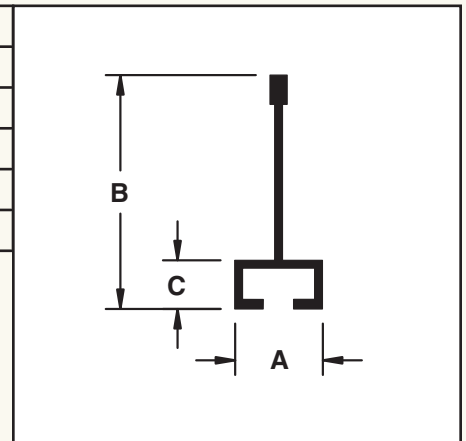


Module size as required.

TYPE	A	B	C	TILE	SLOT
A	9/16"	1-1/2"	5/16"	5/8", 3/4"	1/4"
A-1	9/16"	1-1/2"	7/16"	3/4"	1/4"
A-2	9/16"	1-7/8"	5/16"	5/8", 3/4"	1/4"
A-3	9/16"	2"	5/16"	5/8", 3/4"	1/4"
A-4	9/16"	2-1/4"	5/16"	5/8", 3/4"	1/4"

Intersections can be cross routed, butt cut or mitered.

Series A standard finish: Acrylic "Wet" paint - smooth or textured (light, medium or heavy).

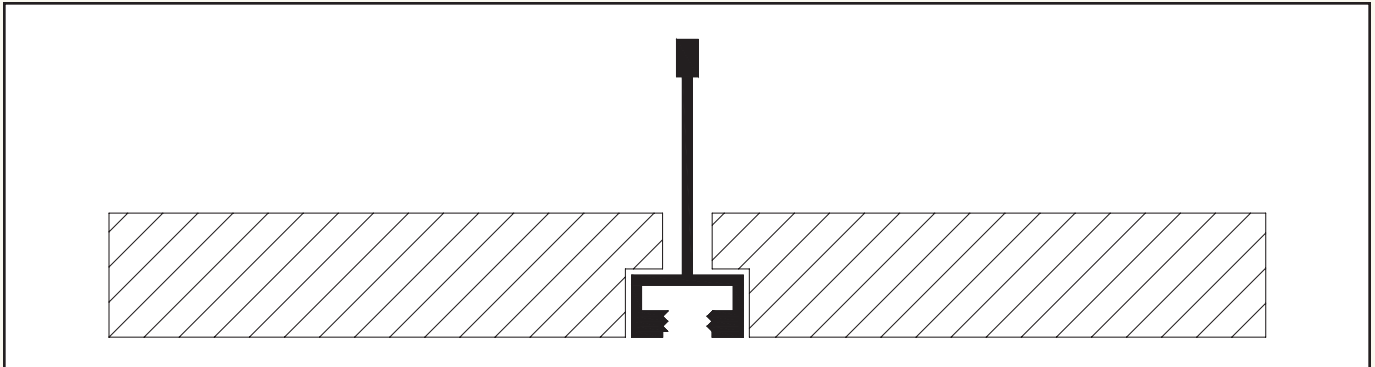


SERIES B

SUSTAINABLE GRIDS IN EXTRUDED ALUMINUM

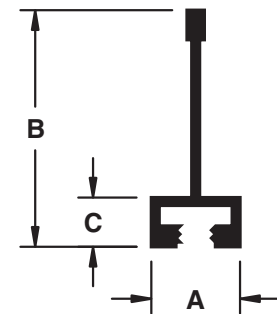


SERIES B is a narrow line design for use with regular acoustical tile. The grid slot will accept a threaded bolt permitting unlimited fastening and unfastening of partition headers without defacing grid or acoustical materials.



Module size as required.

TYPE	A	B	C	TILE	THREADED SLOT
B	9/16"	1-1/2"	5/16"	5/8", 3/4"	5/16" - 18
B-1	9/16"	1-1/2"	7/16"	3/4"	5/16" - 18
B-2	9/16"	1-1/2"	3/8"	5/8", 3/4"	5/16" - 18
B-3	9/16"	2-1/4"	5/16"	5/8", 3/4"	5/16" - 18
B-4	9/16"	1-7/8"	5/16"	5/8", 3/4"	5/16" - 18
B-5	9/16"	1-7/8"	3/8"	5/8", 3/4"	5/16" - 18
B-6	9/16"	1-7/8"	5/16"	5/8", 3/4"	1/8" - 32
B-7	9/16"	1-7/8"	5/16"	5/8", 3/4"	1/4" - 20
B-8	9/16"	1-7/8"	3/8"	5/8", 3/4"	1/4" - 20
B-9	9/16"	1-1/2"	3/8"	5/8", 3/4"	1/4" - 20
B-10	9/16"	2-1/4"	3/8"	5/8", 3/4"	1/8" - 32
B-11	9/16"	1-1/2"	7/16"	5/8", 3/4"	1/4" - 20
B-12	9/16"	1-1/2"	5/16"	3/4"	1/8" - 32
B-13	9/16"	2-1/16"	3/8"	5/8", 3/4"	1/4" - 20
B-14	9/16"	2-1/4"	3/8"	5/8", 3/4"	1/4" - 20
B-15	9/16"	1-3/4"	3/8"	5/8", 3/4"	1/4" - 20
B-16	9/16"	1-1/8"	3/8"	5/8", 3/4"	1/4" - 20
B-17	9/16"	1-15/16"	3/8"	5/8", 3/4"	1/8" - 32
B-60	9/16"	1-1/2"	9/32"	5/8", 3/4"	5/16" - 18



Intersections can be cross routed, butt cut or mitered.

Series B standard finish:

Acrylic "Wet" paint - smooth or textured (light, medium or heavy).