

EXTERIOR SYSTEMS



CISCA Construction Excellence
Award Winner



THE CHILDREN'S HOSPITAL AT OKLAHOMA
UNIVERSITY MEDICAL CENTER
Oklahoma City, OK
Featuring: Aluma Vault 3000 Ceilings

EXTERIOR SYSTEMS

Gordon Exterior Specialties sets the standard for performance-driven, metal products that are attractive, environmentally friendly, and economical.

Gordon provides fully integrated and engineered systems to meet your design criteria. With Gordon, you are assured of perfect fit and finish with consistent color matching of all components.

DESIGN APPLICATIONS & PRODUCTS

- Ceilings
- Column Enclosures
- Wall Systems
 - SOFFIT-SHIELD™ -
Miami-Dade County, Florida Approved
 Notice of Acceptance
 N.O.A. No. 08-0505.07
 Expiration Date: August 14, 2013
 Patent No.: US 8,166,728 B1
- Fascia Systems
- Rain Screens
- Screen Walls
- Soffit Systems
- Spandrel Panels
- Light Shelves
- Perforated Panels
- Acoustical Treatments
- Soffit Vents
- Porte Cocheres
- Canopies
- Sunscreens
- Sun Shades
- Louvers
- Exterior Accents
- Plaster Trims
- Extruded Aluminum
Suspension
- Signage
- ALPRO® Corrugated Systems
- MILLENNIUM® Systems



MILLION AIR
Lake Charles, LA
Featuring: Canopy & Column Enclosure



INTERCONTINENTAL HOTEL
Atlanta, GA
Featuring: Custom Canopy
Ceiling & Fascia System



L'AUBERGE CASINO & HOTEL
 Baton Rouge, LA
 Featuring: GreenWood™ Corrugated
 Panel and Metal Canopy Ceilings

PRE-CONSTRUCTION SERVICES

Gordon's pre-construction services help define the scope of work. Gordon provides:

- Custom product design and finish selection
- Specification writing assistance
- Design load and wind load requirements and recommended proper suspension and the product necessary to meet specific requirements
- Drawings showing conceptual design details through construction document details
- Budget quotations
- Design for feasibility and fabrication capability
- Engineering calculations and applicable PE stamp for the project location
- Recommend value engineered options
- Project kick-off meetings available at the manufacturing facility
- Samples and mockups throughout the design process as necessary
- Installation instructions and guidelines for the contractor
- Bill of material reconciliation with the contractor



EXTERIOR SYSTEMS

CANOPY CEILINGS



PIER 3
San Francisco, CA
Featuring: Aluma Vault 3000 Ceilings

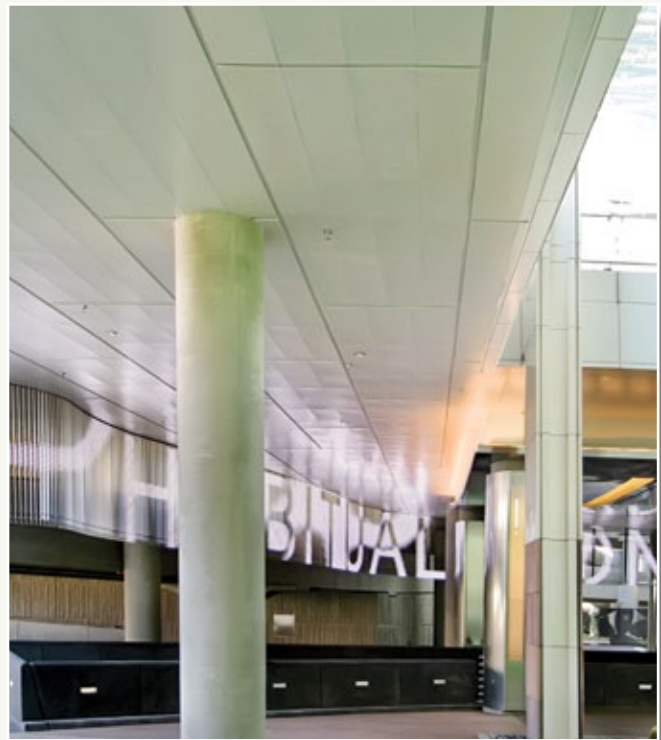


RIO VISTA RECREATION CENTER
Peoria, AZ
Featuring: ALPRO® Corrugated Panel Canopy



CISCA Construction Excellence
Award Winner

HARMON PLACE AT ARIA RESORT & CASINO, CITYCENTER
Las Vegas, NV
Featuring: Stainless Steel and Aluminum Canopy Ceilings



EXTERIOR SYSTEMS

SOFFITS



ARIZONA DISABILITY SERVICES CENTER
Phoenix, AZ
Featuring: ALPRO® Corrugated Soffit Panels





EXTERIOR SYSTEMS

SOFFIT-SHIELD



WILLIS KNIGHTON SOUTH EMERGENCY ENTRANCE
Shreveport, LA
Featuring: Soffit & Fascia Cladding,
Column Enclosures, & Soffit Vents





Gordon SOFFIT-SHIELD™ is the fascia and soffit solution to protect vertical and horizontal exterior building surfaces at times of devastating environmental events.

- Design Load Performance
- Meets the applicable requirements of Florida Building Code Test Protocols of design loads of +/- 125 psf
 - Large and Small Missile Impact Resistant
 - Hurricane Resistant up to Category 5
 - Tornado Resistant up to F4 (<222 MPH)
- Designed to maintain building integrity
- Sleek and Stable

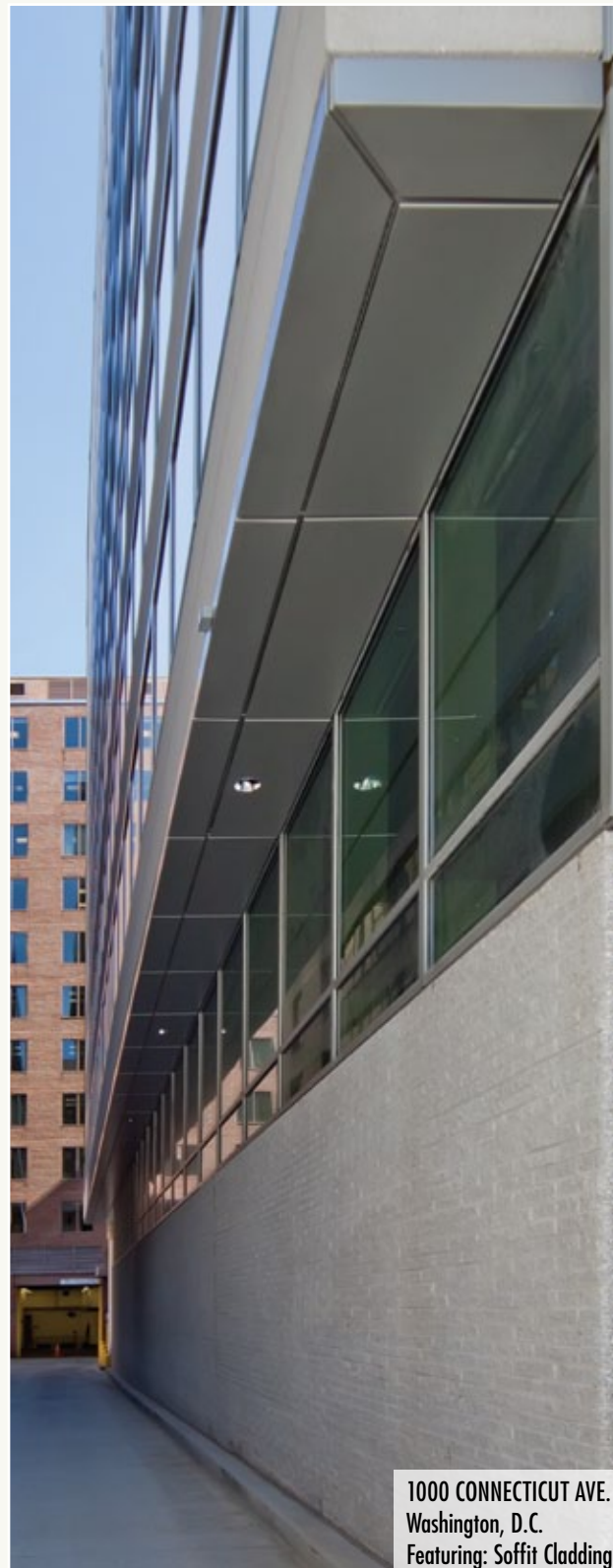
Miami-Dade County, Florida Approved

Notice of Acceptance

N.O.A. No. 08-0505.07

Expiration Date: August 14, 2013

Patent No.: US 8,166,728 B1



1000 CONNECTICUT AVE.
 Washington, D.C.
 Featuring: Soffit Cladding

EXTERIOR SYSTEMS

SCREENWALLS



CAPSTAR AT COMPASS PLAZA
 Austin, TX
 Featuring: MILLENNIUM® Screenwalls
 & MILLENNIUM Column Enclosures

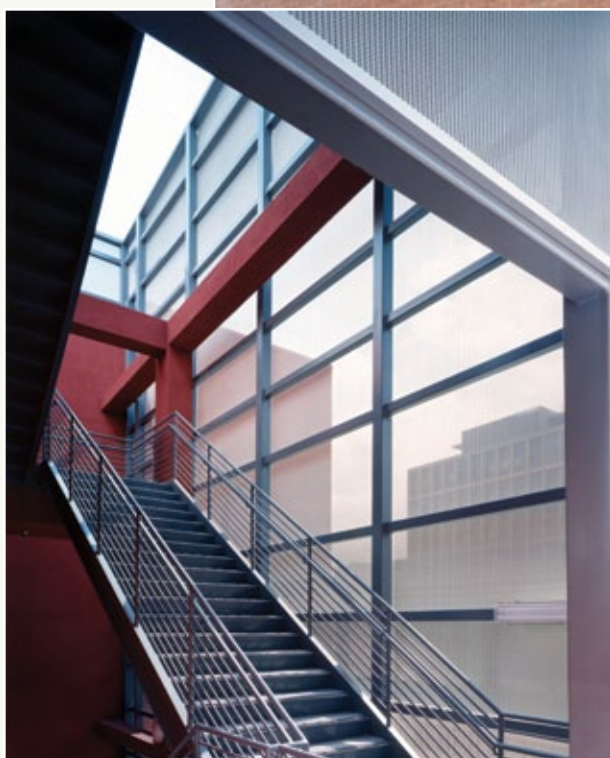




CISCA Construction Excellence
Award Winner

MILLENNIUM® panel systems create the decorative sunscreen facade for the stairwells and walls on the building exterior.

MILLENNIUM has a tubular slit pattern that is 40% open. When viewing the panels directly, the panels appear opaque. At angles, panels appear transparent.



CALIFORNIA STATE UNIVERSITY, GOLDEN EAGLE
Los Angeles, CA
Featuring: MILLENNIUM® Screenwalls

EXTERIOR SYSTEMS

COLUMN ENCLOSURES



U.S. FEDERAL COURTHOUSE
Jackson, MS



BELAMAR HOTEL
Manhattan Beach, CA



CAPSTAR AT COMPASS PLAZA
Austin, TX

Column Enclosures are custom manufactured and finished to your design objectives.

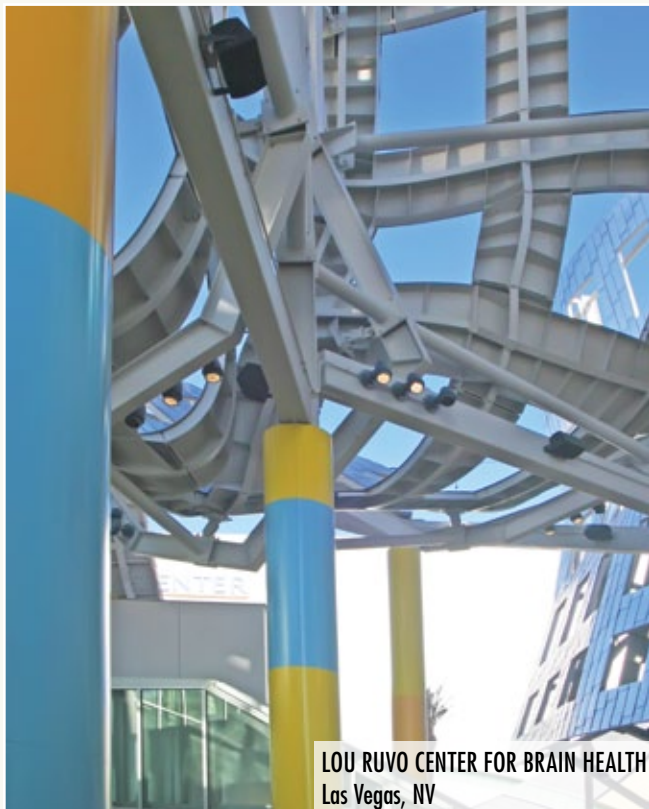
Materials:

- Aluminum
- Stainless Steel
 - Brushed
 - Polished
 - Mechanical
 - Textured
 - Embossed
- MILLENNIUM® tubular expanded aluminum

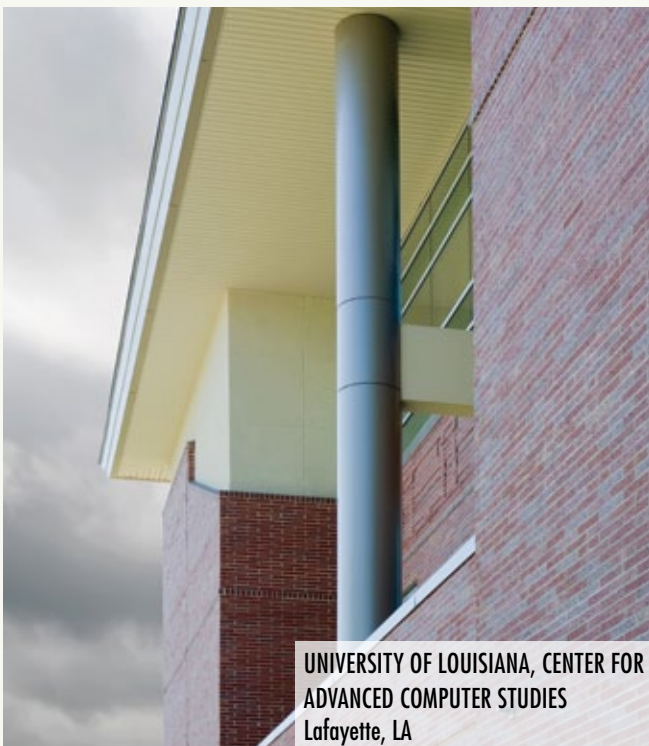
Connection:

- Patented N-gage™² connection system reduces installation time and labor costs and provides accessibility
- Mechanically fastened with caulked joints
- VE column connection system

²N-gage U.S. Patent #6,148,585



LOU RUVO CENTER FOR BRAIN HEALTH
Las Vegas, NV



UNIVERSITY OF LOUISIANA, CENTER FOR
ADVANCED COMPUTER STUDIES
Lafayette, LA



FIRST CASTLE FEDERAL CREDIT UNION
Covington, LA

EXTERIOR SYSTEMS

MISCELLANEOUS



PERFORATED CEILINGS



CORRUGATED SOFFITS



SOFFIT VENTS



PERFORATED SIGNAGE



MILLENNIUM STAIRWELL



CORRUGATED SCREENWALLS



CORRUGATED SHADES



DECORATIVE SHADE ACCENTS



CORRUGATED CANOPY CEILINGS



COLUMN ENCLOSURES WITH METAL CAPITALS & SOFFIT VENTS



ANNETTE STRAUSS SQUARE, SHANNON AND TED SKOKOS PAVILLION, AT&T PERFORMING ARTS CENTER
Dallas, TX
Featuring: ALPRO® Acoustical Baffles

FINISHES

- Custom and Standard Powder Coats
- Specialty Powder Coats
 - ACROGUARD®-UVX
 - ACROGUARD®
 - ACROSTAT™ - Antimicrobial
 - Luminescent
 - Metallic
 - Translucent
- GreenWood™ - Wood Grain Films
- Ceramatech™ Durable Porcelain finish
- Specialty Exterior Finishes
- Mechanical & Textured Stainless Steel

GREEN BY DESIGN

- LEED®¹ credits available
- In-House Finishes
 - Biodegradable pre-treatment (No phosphates) powder coat
 - No hazardous waste
 - No VOCs
 - No heavy metals
- Reference our sustainable solutions brochure and website for more information

GORDON
EXTERIOR SPECIALTIES DIVISION

5023 HAZEL JONES ROAD, BOSSIER CITY, LA 71111
800.747.8954
800.877.8746 FAX
SALES@GORDONEXTERIORS.COM
GORDONEXTERIORS.COM
AN EMPLOYEE OWNED COMPANY

GORDON Exterior Specialties is a Division of Gordon Incorporated.

¹LEED is a registered trademark of the U.S. Green Building Council.

