

DG 1.5 DATA CENTER CEILING SYSTEM

GORDON
INCORPORATED



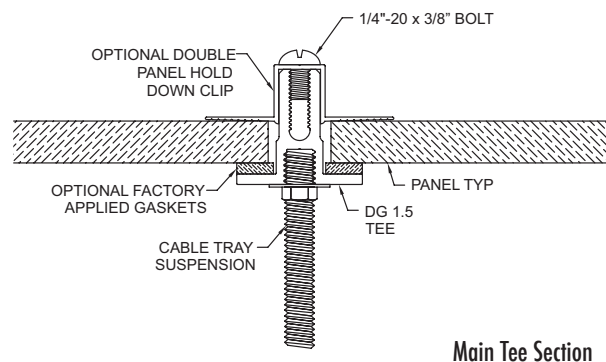
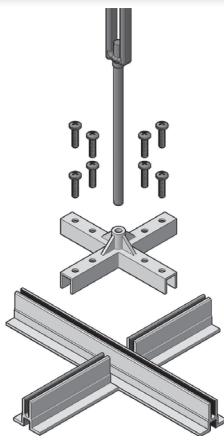
INFOMART DATA CENTERS
Dallas, TX

DG 1.5 DATA CENTER CEILING SYSTEM

The Most Versatile Design Platform for Tomorrow's Data Center

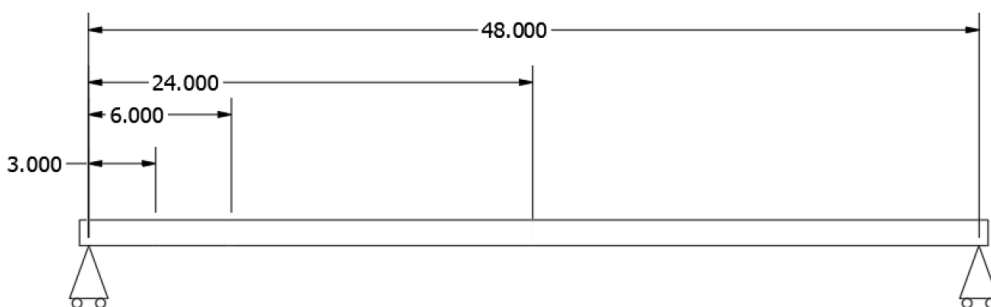
GORDON DATA CENTER CEILING SYSTEM BENEFITS

- Serves the dual purpose of both drop ceiling and structural support grid for overhead utility distribution
- Provides an attachment or suspension platform for containment barriers, partitions, or surface mounted equipment
- Greater installation and routing flexibility of distribution systems and partitions
- Totally accessible overhead suspension allows for simple expansion, upgrade, or distribution system changes
- Reduces the amount of interstitial support steel by up to 50%
- Eliminates the need for acoustical ceiling tile drop ceilings and strut grids for overhead distribution suspension
- No drop ceiling penetrations means no harmful debris that can damage electronic equipment
- Ceiling components are non-progressive and removable, without compromising the structural integrity of the installed ceiling grid.





DG 1.5 Data Center Grid - Load Data

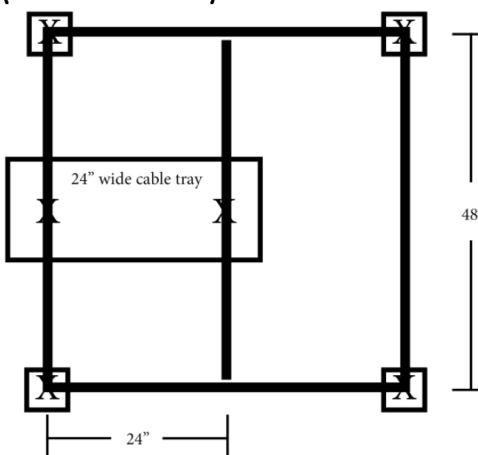


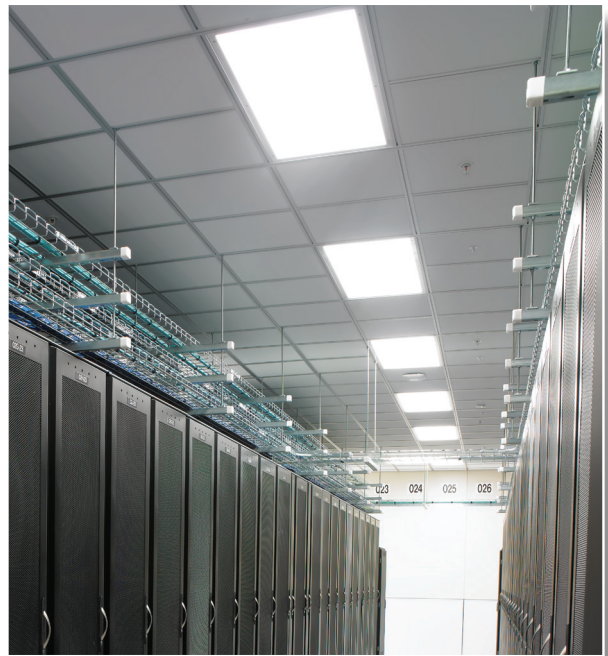
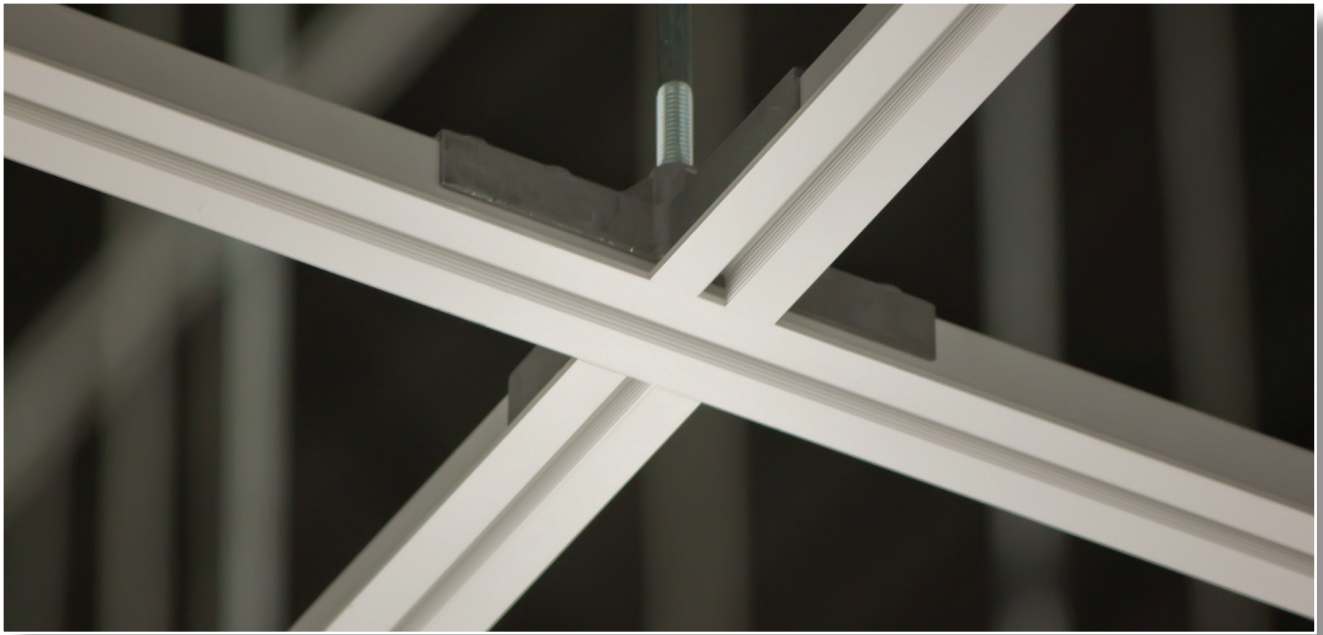
Hanger Span	Deflection Criterion	Deflection	Load Distance Suspension Point		
			24"	6"	3"
			Point Load / Lbs	Point Load / Lbs	Point Load / Lbs
48"	L/360	0.133"	63	135	335
48"	L/180	0.267"	127	275	530
48"	L/90	0.533"	241	550	1,000

Based on Worst Case Suspension Application (See Detail Below)

Hanger Span	Deflection Criterion	Number of Cat6 Cables with Cable Tray Supported 48" O.C.
48"	L/360	608
48"	L/180	1,347
48"	L/90	2,347

Design Distributed Load for Pre-Cast / Deck Connection
32 lbs / SF









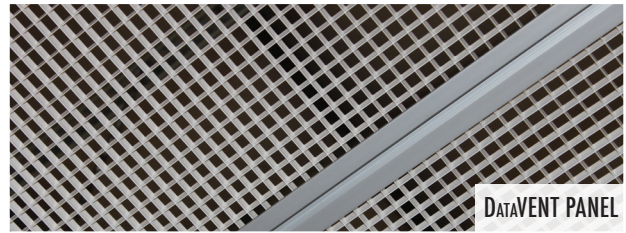
Building on the Platform

DESIGN ATTRIBUTES

- **Load Bearing Design** - The DG 1.5 ceiling suspension is engineered to support direct suspension of overhead cable distribution and containment barriers.
- All extrusions have a continuous 3/8-16 thread boss for attachment and/or suspension at any location
- Die cast intersection connectors join the extruded aluminum grid members and provide an attachment point for 4' x 4' suspension from building structure
- Perimeter can be fixed or floating
- **Standard Finish** - Clear Anodized. Black on white optional.

CEILING OPTIONS:

- **PANELS**
 - **DATAVENT** open cell, aluminum panels for hot air return
 - Twin wall polycarbonate panels
 - Perforated or solid metal panels
- **LIGHTING**
 - **DATA LUME** light fixtures with LED or T-8 fluorescent lamps
- **CONTAINMENT**
 - **DATA CEL** Containment Wall System for hot or cold aisle isolation
- **PARTITIONS**
 - Modular Chase Wall System for clean, safe barriers to separate equipment corridors
 - Security walls for tenant space dividers



DATAVENT PANEL



BARRIER ATTACHMENT



MODULAR CHASE WALL SYSTEM



DATA CEL CONTAINMENT WALL



THE EBM DATA CENTER
Phoenix, AZ

GREEN BY DESIGN

- Products contribute to LEED®¹ certification
- 70% recycled aluminum
 - 60% pre-consumer content
 - 10% post-consumer content
- In-House Finishes
 - Biodegradable pre-treatment (No phosphates) Powder Coat
 - No hazardous waste
 - No VOCs
 - No heavy metals
- Reference our sustainable products brochure and website for more information

Visit our website:



GORDON[®]
INCORPORATED

5023 HAZEL JONES ROAD, BOSSIER CITY, LA 71111
800.747.8954
800.877.8746 FAX
SALES@GORDON-INC.COM
GORDON-INC.COM
AN EMPLOYEE OWNED COMPANY

¹ LEED® is a registered trademark of the U.S. Green Building Council.



Find us on:

