

ALUMA VAULT 1000 / 2000 / 2000R

LAY-IN PANEL CEILINGS WITH EXPOSED SUSPENSION SYSTEMS



GE OIL & GAS
TECHNOLOGY CENTER
Oklahoma City, OK



KINGSTON ELEMENTARY SCHOOL
Benton, LA

ALUMA VAULT 1000 / 2000 / 2000R

CEILING SYSTEMS

AV1000, AV2000 and AV2000R use main tees, cross tees and lay-in panels. Main tees can be flat or curved to the specified radius. Flat lay-in panels are secured with hold down clips, conforming to the shape of the tee.

DESIGN ELEMENTS

- Custom engineered to your design
- Factory finished in powder coat, acrylic "wet" paint, or GreenWood™ - Wood Grain Films
- Specify the radius of your choice
- Convex, Concave, Sloped, Undulating and Flat
- Panels lay into the suspension
- Extruded aluminum suspension and perimeter
- Multiple standard perforation patterns
- Create your own perforation pattern
- Utilize FRP panels for backlighting
- Panel sizes up to 5' x 10'
- Access panels
- Acoustical treatment



HENDERSON ENGINEERS
Lenexa, KS



ANTIGUO HOSPITAL MILITAR
ESPAÑOL DE PONCE
Ponce, PR



LEXUS OF AUSTIN
Austin, TX



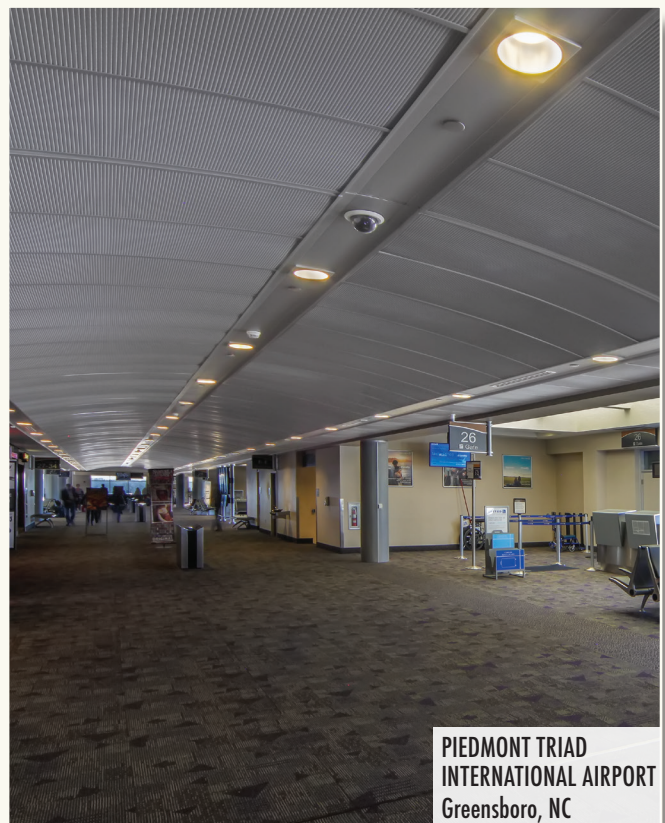
GRAND HYATT
New York, NY



CINEBISTRO
Hampton, VA



LOUISIANA STATE UNIVERSITY,
MEDICAL SCHOOL CAFETERIA
New Orleans, LA



PIEDMONT TRIAD
INTERNATIONAL AIRPORT
Greensboro, NC

ALUMA VAULT 1000 / 2000 / 2000R

SYSTEM INTEGRATION

- Air slots
- Lighting
- FlexHead^{®1} sprinklers
- Perimeter lights
- Perimeter pockets
- Penetrations
 - Speakers
 - Columns
 - Lights
 - Air
 - Sprinklers



FlexHead[®]
SPRINKLER



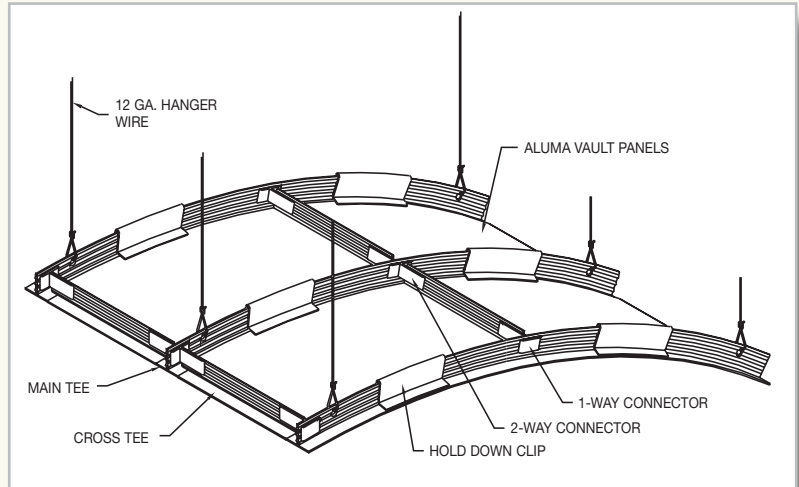
THE CHILDREN'S HOSPITAL AT OKLAHOMA UNIVERSITY MEDICAL CENTER
Oklahoma City, OK

PERFORMANCE

- Acoustical: NRC up to 1.00
- Seismic: All Zones
- Flame Spread: Class A

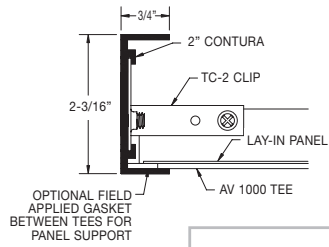


FRP PANELS

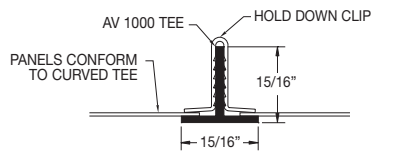


CEILING SYSTEMS

AV 1000 with 2" CONTURA Perimeter

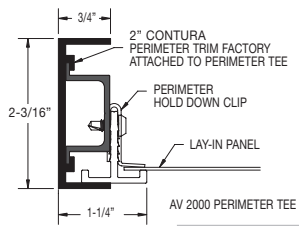


AV1000

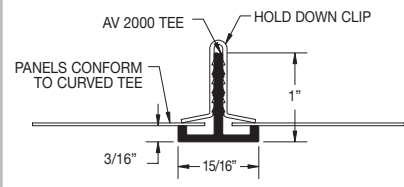


THOMAS EDISON HIGH SCHOOL
Alexandria, VA

AV 2000 with 2" CONTURA Perimeter

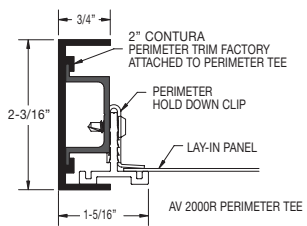


AV2000

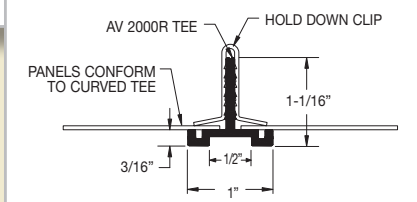


CINEBISTRO
Hampton, VA

AV 2000R with 2" CONTURA Perimeter



AV2000R



CADENA REEVES COURTHOUSE
San Antonio, TX

ALUMA VAULT 1000 / 2000 / 2000R

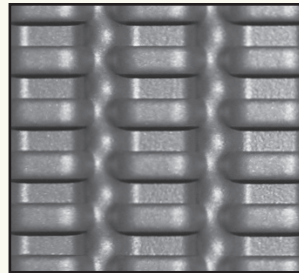
PANELS

- Perforating capabilities
 - Wide range of hole sizes and shapes
 - Multiple hole sizes on same panels
 - Embossing
 - Non-perforated borders
 - Designer perforations to create custom graphics
- Modules up to 5' x 10' on certain patterns
- Acoustical treatment
- Access panels
- Penetrations
 - Sprinklers ◦ Air
 - Speakers ◦ Columns
 - Lights
- Material Options
 - Aluminum
 - Steel
 - Stainless Steel
 - FRP
 - MILLENNIUM
- Design and engineering support

See binder and website for other perforation options.

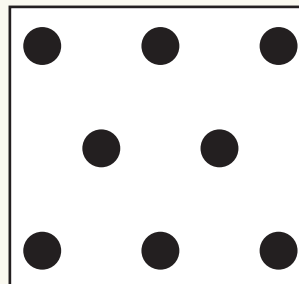
PERFORATIONS

ITEM#	HOLE SIZE	PATTERN	OPEN AREA
O116-10SS20	1/16" x 1"	Oblong side-staggered	20%
018-12SS32	1/8" x 1/2"	Oblong side-staggered	32%
018-10SS39	1/8" x 1"	Oblong side-staggered	39%
T116-12SS31	1/16" x 1/2"	Slot side-staggered	31%
T964-34ST42	9/64" x 3/4"	Slot straight centers	42%
R116-18ST20	1/16" x 1/8"	Round straight centers	20%
R116-14ST05	1/16" x 1/4"	Round straight centers	5%
R116-14SG06	1/16" x 1/4"	Round staggered centers	6%
R18-316SG40	1/8" x 3/16"	Round staggered centers	40%
R316-58SG08	3/16" x 5/8"	Round staggered centers	8%
R14-716SG30	1/4" x 7/16"	Round staggered centers	30%
R14-12ST20	1/4" x 1/2"	Round straight centers	20%
R38-3132SG13	3/8" x 31/32"	Round staggered centers	13%
R12-34ST35	1/2" x 3/4"	Round straight centers	35%
R12-10SG23	1/2" x 1"	Round staggered centers	23%
S14-12ST25	1/4" x 1/2"	Square straight centers	25%
S14-34SG13	1/4" x 3/4"	Square staggered centers	13%
S38-10ST14	3/8" x 1"	Square straight centers	14%



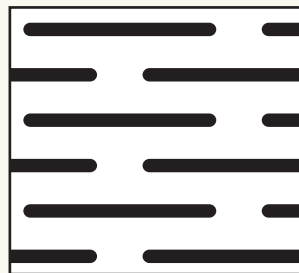
MILLENNIUM®

Tubular Aluminum 1/4" Thick
Straight Centers
40% Open Area



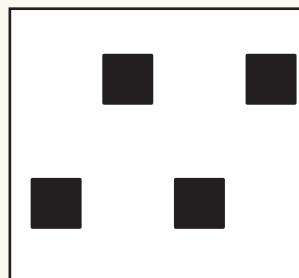
R316-58SG08

Round 3/16" x 5/8"
Staggered Centers
8% Open Area



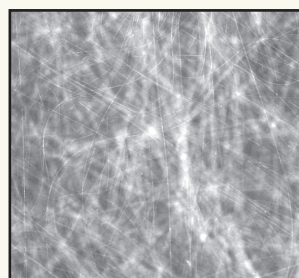
O116-10SS20

Oblong 1/16" X 1"
Side-Staggered
20% Open Area



S14-34SG13

Square 1/4" x 3/4"
Staggered Centers
13% Open Area



TRANSLUCENT FRP

Variety of colors available
Light Transmission: 82%

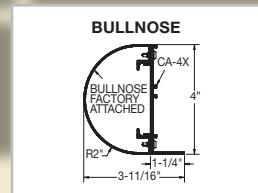
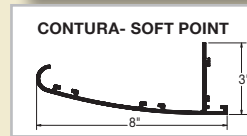
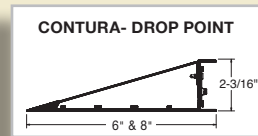
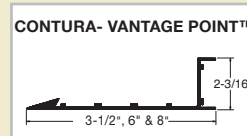
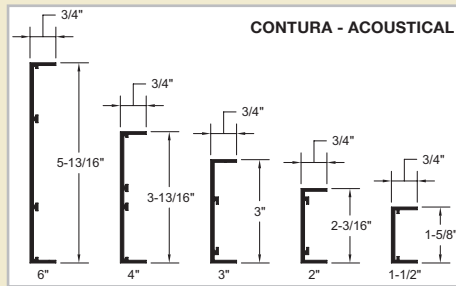
PERIMETERS

- Extruded aluminum
- Arched/reverse arched
- Undulating
- Curved, straight or twisted
- Compound curves
- Factory welded corners
- Crisp lines
- Tight curving capabilities

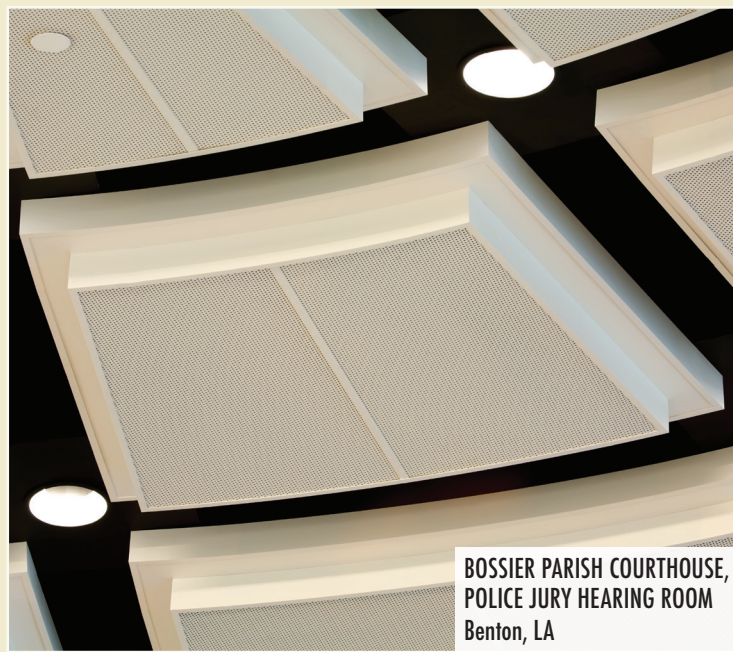
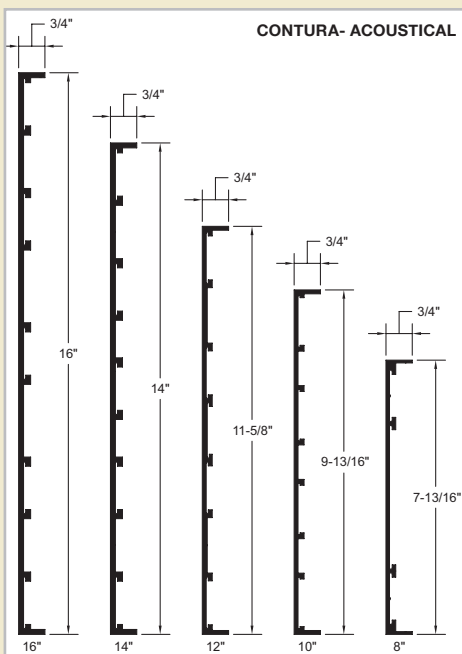


ARCHED/REVERSE ARCHED, CURVED OR STRAIGHT

STRAIGHT ONLY



STRAIGHT OR CURVED (NOT ARCHED)





HYATT REGENCY
Indianapolis, IN

FINISHES

- Acrylic Water Base “Wet” Paints
- Powder Coat - Durable Painted Finishes
 - Standard Finishes
 - ACROGUARD® Enhanced Durability Finishes
 - ACROGUARD® Patinaed Finishes
 - ACROGUARD®-UVX
 - ACROSTAT™ Antimicrobial
 - Metallic
- GreenWood™ Wooden Finishes
 - Wood Grain Films
 - Wood Grain Paints
 - Polyester
 - PVDF
- PVDF
 - 50% Resin Based Coatings
 - 70% High Performance Resin Based Coatings

GREEN BY DESIGN

- Products contribute to LEED®² certification
- Aluminum Extrusions - 38.1% recycled
 - 29.4% pre-consumer content
 - 8.7% post-consumer content
- Aluminum Coil - 28% recycled
 - 22% pre-consumer content
 - 6% post-consumer content
- In-House Finishes
 - Biodegradable pre-treatment (No phosphates)
 - No hazardous waste
 - No VOCs
 - No heavy metals
- Reference our sustainable products brochure and website for more information. Recycled content values are subject to change. Contact us for accurate values or job specific requirements.

GORDON[®]
INCORPORATED

5023 HAZEL JONES ROAD, BOSSIER CITY, LA 71111
800.747.8954
800.877.8746 FAX
SALES@GORDON-INC.COM
GORDON-INC.COM
AN EMPLOYEE OWNED COMPANY

¹ FlexHead® is a registered trademark of FlexHead Industries.

² LEED® is a registered trademark of the U.S. Green Building Council.

