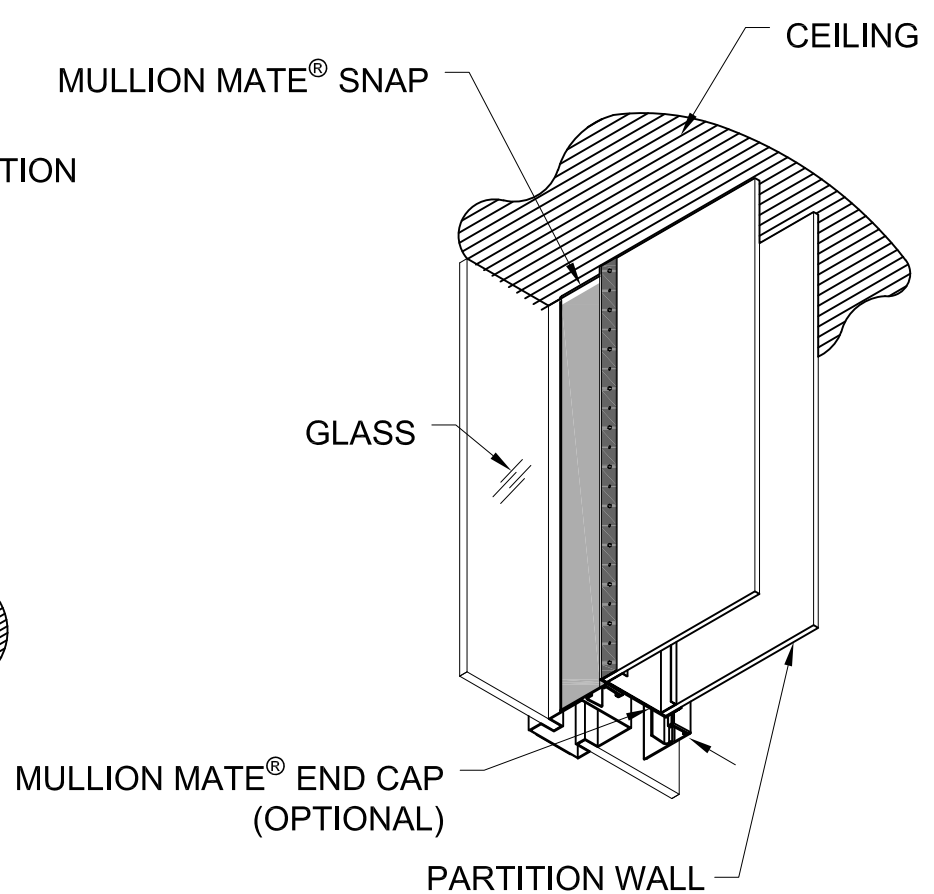
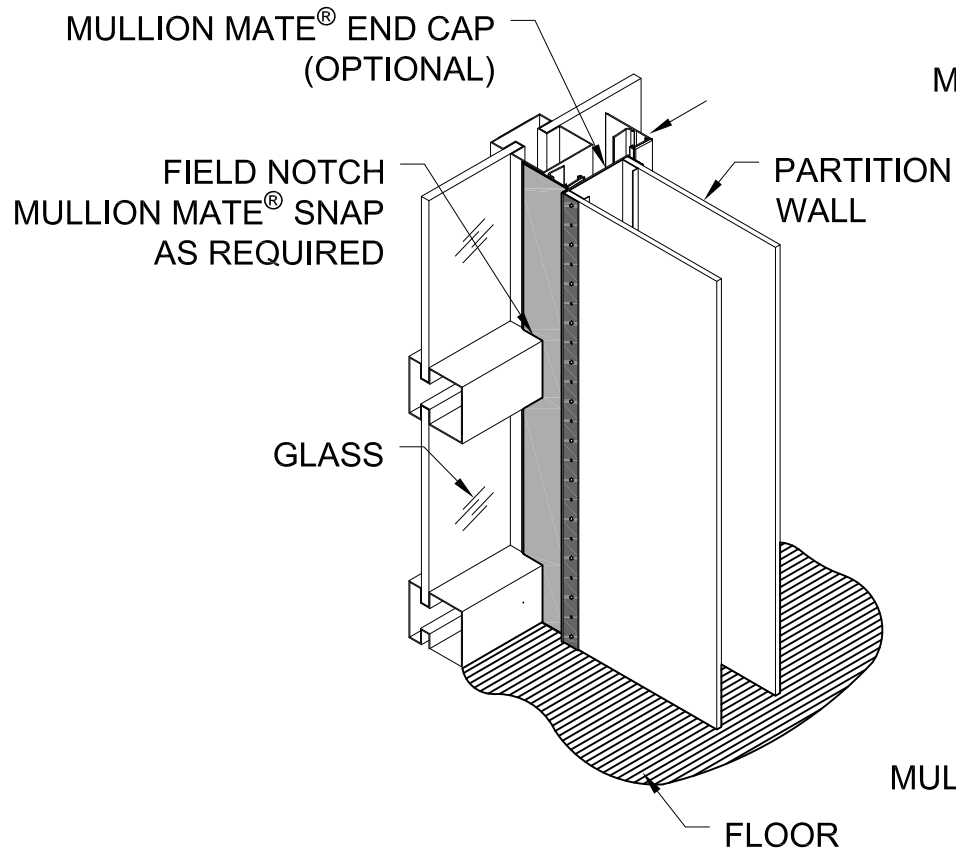


DETAIL AT FLOOR

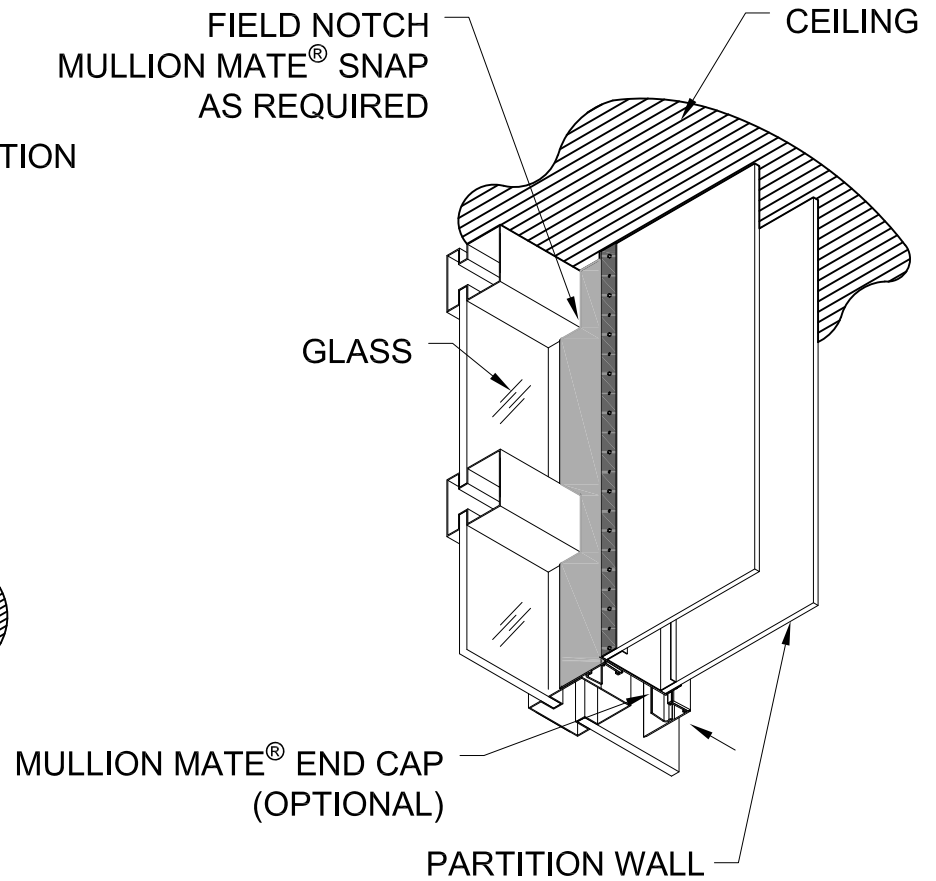


DETAIL AT CEILING

MULLION MATE® SNAP IS PATENT PENDING

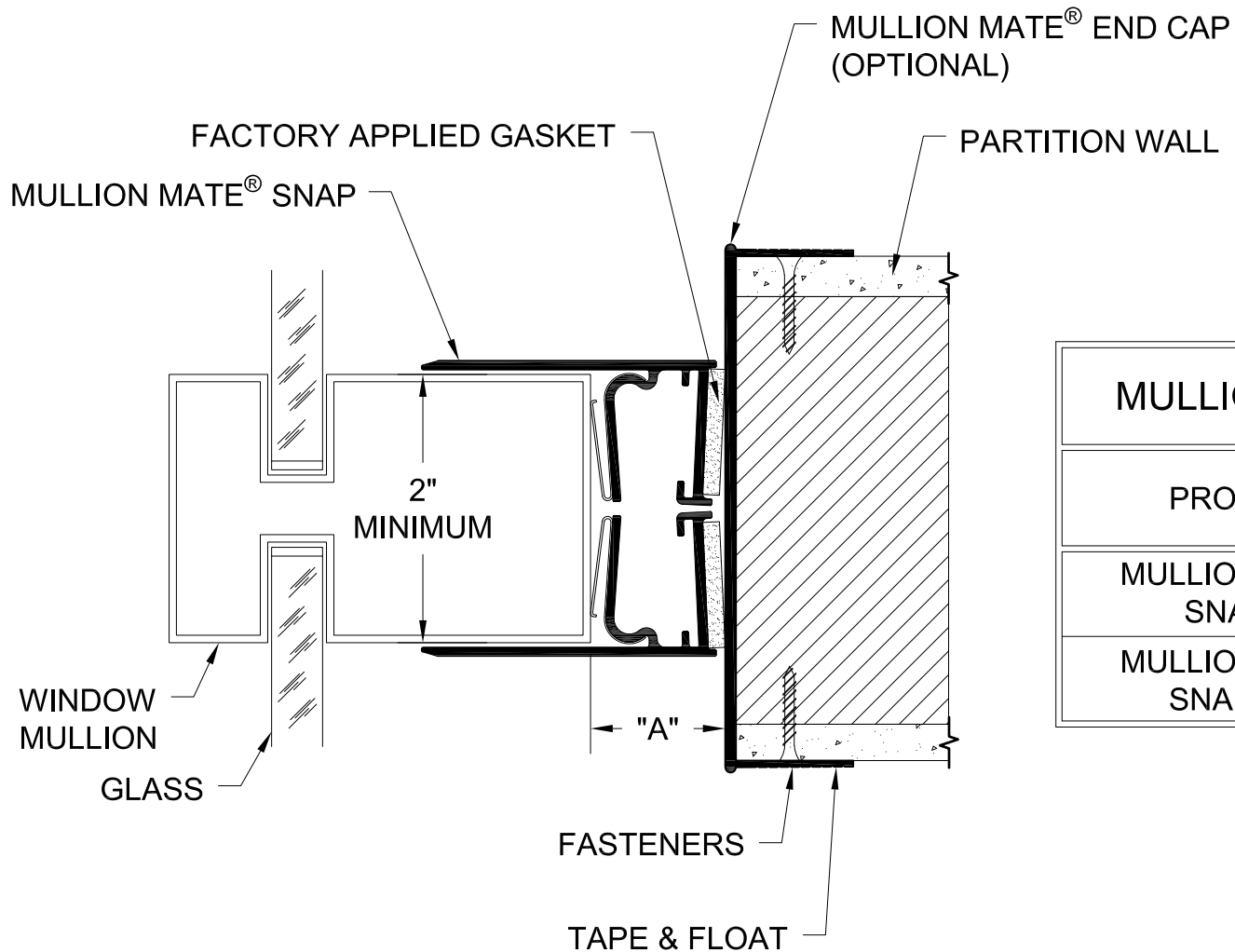


DETAIL AT FLOOR



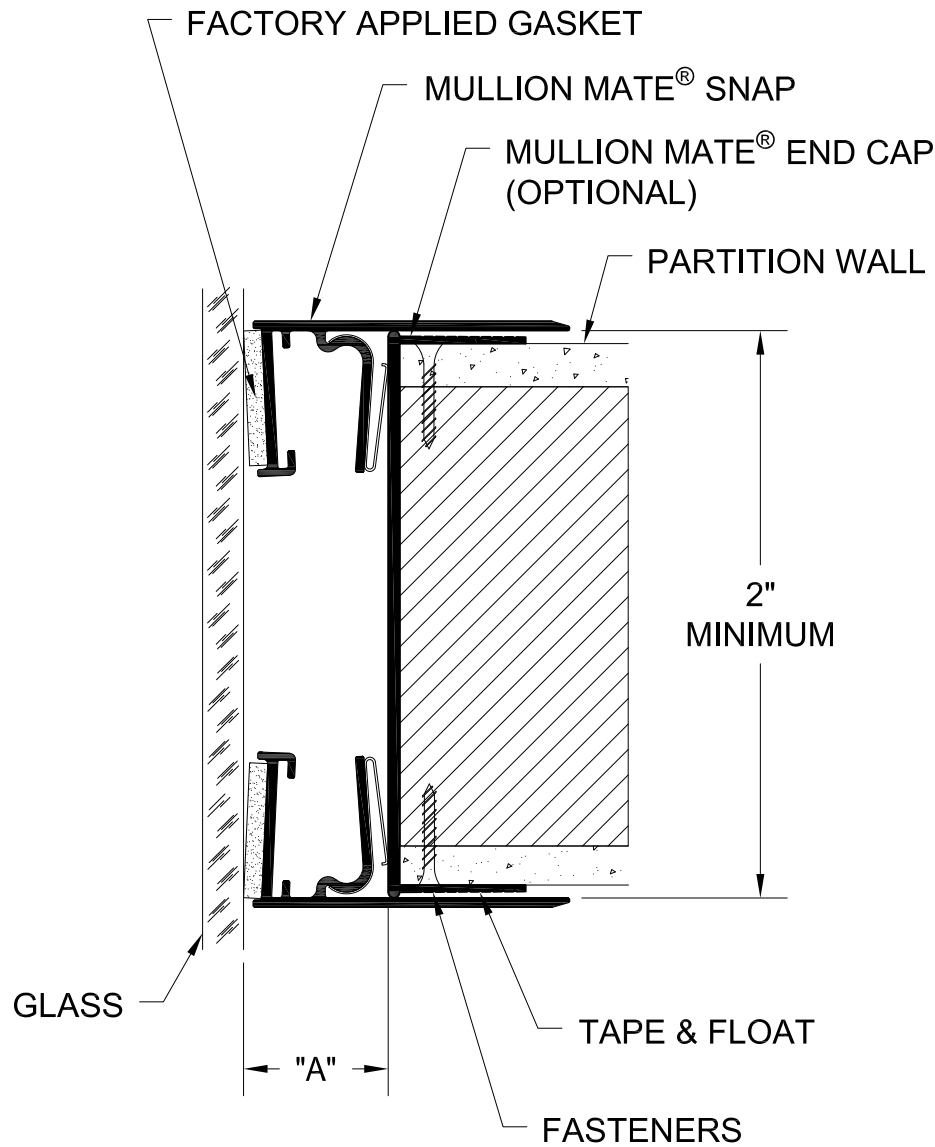
DETAIL AT CEILING

MULLION MATE® SNAP IS PATENT PENDING



MULLION MATE [®] SNAP SIZES	
PRODUCT	"A"
MULLION MATE [®] SNAP - 1	1" TO 1 7/16"
MULLION MATE [®] SNAP - 1.5	1 1/2" TO 2"

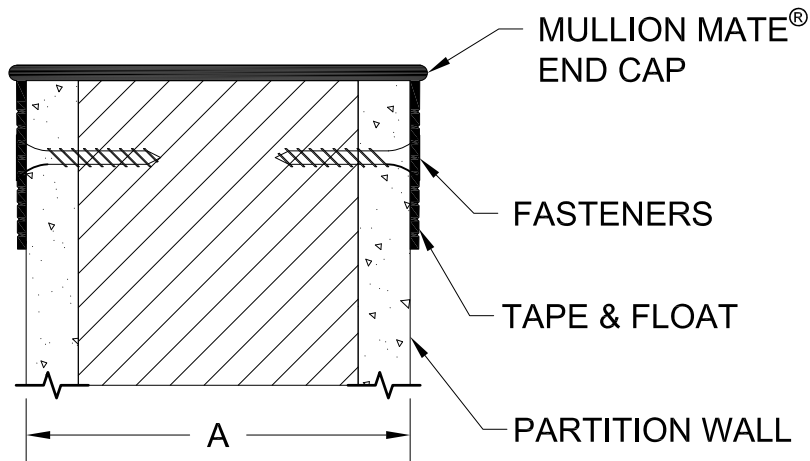
MULLION MATE[®] SNAP IS PATENT PENDING



MULLION MATE [®] SNAP SIZES	
PRODUCT	"A"
MULLION MATE [®] SNAP - 1	1" TO 1 7/16"
MULLION MATE [®] SNAP - 1.5	1 1/2" TO 2"

WALL-TO-GLASS APPLICATION
 MULLION MATE[®] SNAP MUST BE INSTALLED AGAINST MINIMUM 1/8" THICK GLASS.

MULLION MATE[®] SNAP IS PATENT PENDING



MULLION MATE[®] END CAPS

PART #	"A"
MMEC-375	3 3/4"
MMEC-487	4 7/8"
MMECBF-518	5 1/8"
MMECBF-514	5 1/4"
MMECBF-512	5 1/2"
MMEC-600	6"
MMECBF-618	6 1/8"
MMEC-725	7 1/4"
MMECBF-812	8 1/2"

* CONTACT FACTORY FOR OTHER SIZE OPTIONS