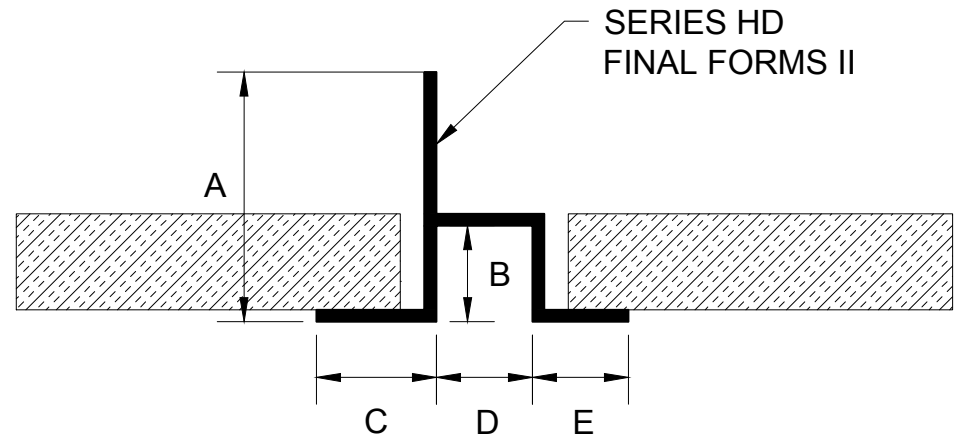
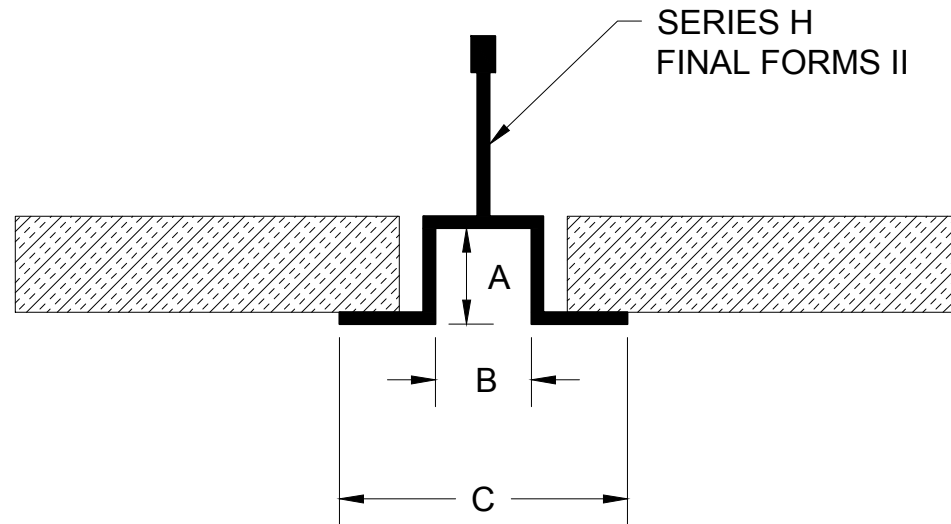


## C SERIES H

PART #	"A"	"B"	"C"
HA-1212	1/2"	1/2"	1-1/2"
HA-3434	3/4"	3/4"	2-1/4"
HA-3412	3/4"	3/4"	1-3/4"

## C SERIES HD

PART #	"A"	"B"	"C"	"D"	"E"
HD-1238	1-1/4"	3/8"	1"	1/2"	3/8"
HD-5812	1-5/16"	1/2"	5/8"	1/2"	1/2"



**GORDON**<sup>®</sup>  
INCORPORATED

5023 HAZEL JONES ROAD, BOSSIER CITY, LA 71111  
800.747.8954  
800.877.9746 FAX  
SALES@GORDON-INC.COM  
GORDON-INC.COM  
AN EMPLOYEE OWNED COMPANY

TITLE

FINAL FORMS II  
SERIES H + HD CUSTOM TRIM  
DETAIL