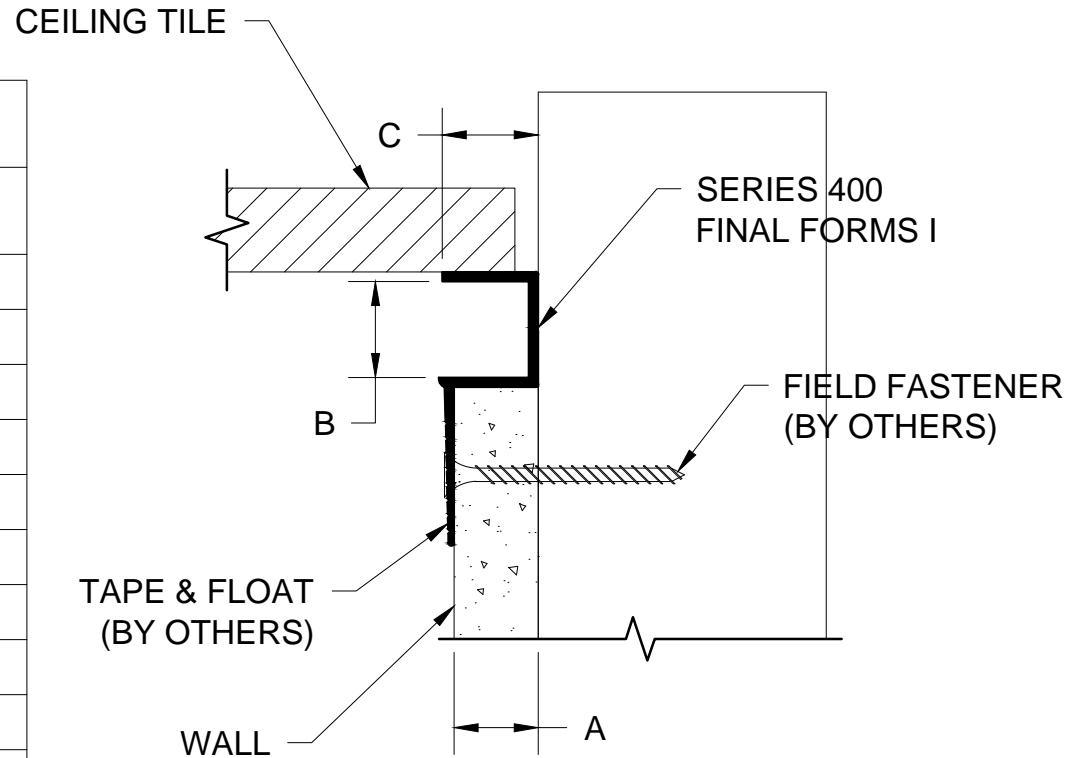


SERIES 400

PART #	"A"	"B"	"C"
412-1/2**	7/16"	1/2"	1/2"
434-1/2	7/16"	3/4"	3/4"*
410-1/2	7/16"	1"	1/2"
412-5/8**	5/8"	1/2"	5/8"
458-5/8	5/8"	5/8"	5/8"
434-5/8**	5/8"	3/4"	5/8"
410-5/8	5/8"	1"	5/8"
415-5/8	5/8"	1-1/2"	5/8"
*OVERHANG			
**EXTRUDED INSERT AVAILABLE			



GORDON
INTERIOR SPECIALTIES DIVISION

5023 HAZEL JONES ROAD, BOSSIER CITY, LA 71111
800.747.8954
800.877.8746 FAX
SALES@GORDONINTERIORS.COM
GORDONINTERIORS.COM
AN EMPLOYEE OWNED COMPANY

TITLE

FINAL FORMS I
SERIES 400 DETAILS