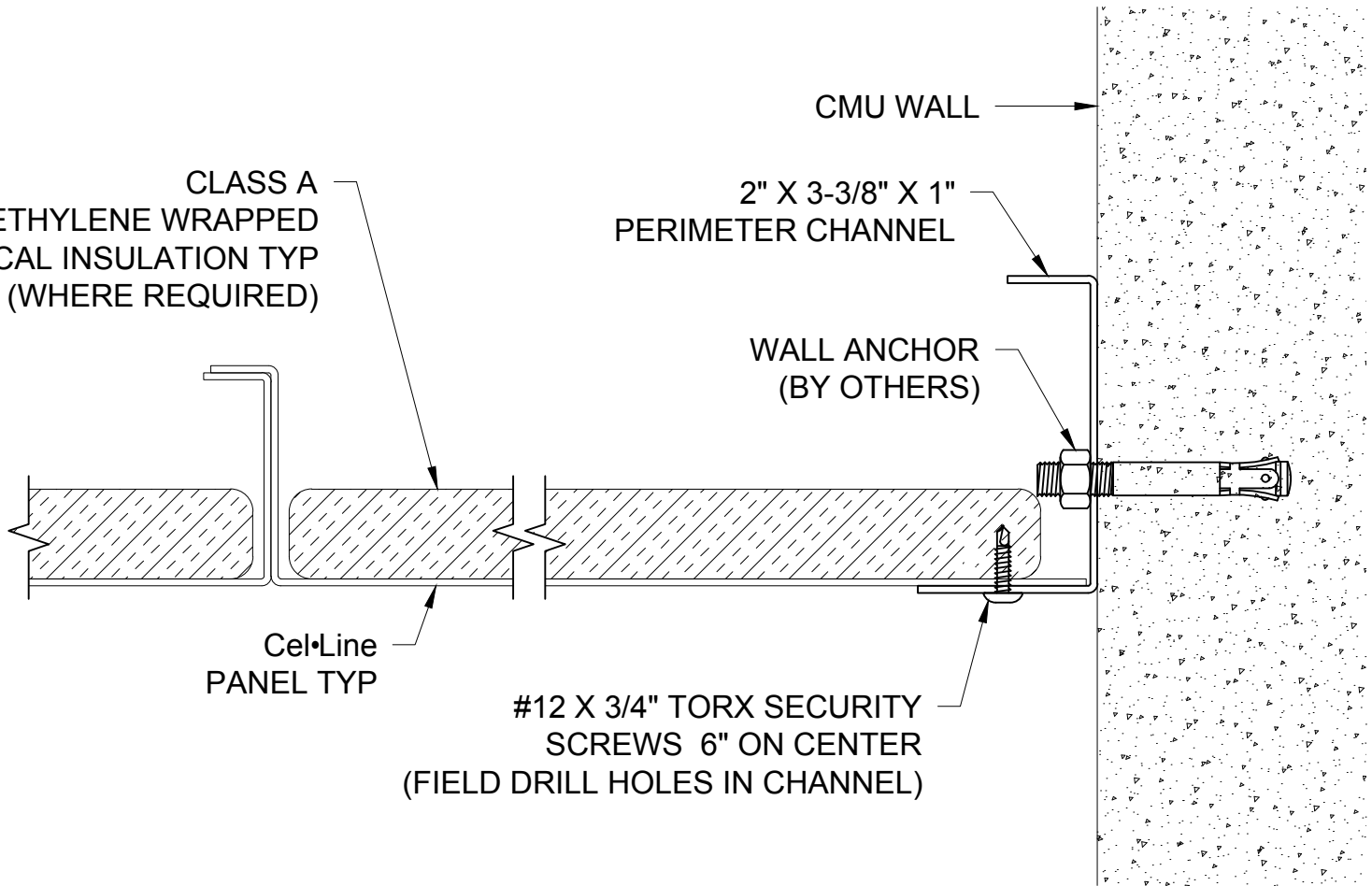


CLASS A  
POLYETHYLENE WRAPPED  
ACOUSTICAL INSULATION TYP  
(WHERE REQUIRED)



TORX® TAMPER RESISTANT SECURITY SCREWS IS A REGISTERED TRADEMARK OF CAMCAR

**GORDON**®  
ARCHITECTURAL+ENGINEERED SOLUTIONS

5023 Hazel Jones Rd.  
Bossier City, LA 71111  
800.747.8954  
GORDON-INC.COM  
sales@gordon-inc.com

TITLE

**CONCEALED FASTENER Cel-Line®**  
ALTERNATE DETAIL AT LAST PANEL  
(WHERE INACCESSIBLE FOR HOLD DOWN PLACEMENT)