

FINAL FORMS II

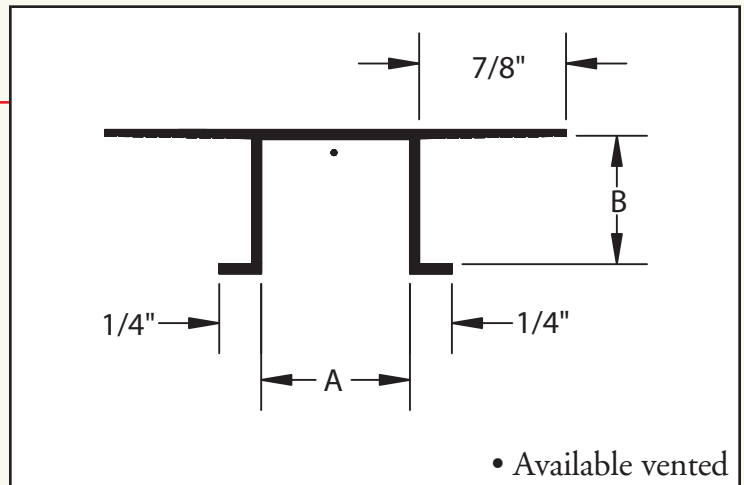
UNIQUE TRIMS AND SHAPES IN PREFINISHED ALUMINUM

GORDON
INCORPORATED

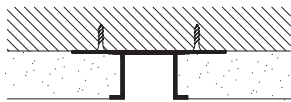
BUY ONLINE ▶

R REVEAL TRIMS

Trims are available in clear satin anodized or painted finishes.



PLASTER

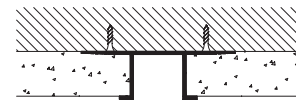


PART NUMBER	A	B
RH-1434 •	3/4"	1/4"
RH-1415 •	1-1/2"	1/4"
RH-1430 •	3"	1/4"
RH-3812 •	1/2"	3/8"
*RP-3414	1/4"	3/4"
RP-3412 •	1/2"	3/4"
RP-3434 •	3/4"	3/4"
RP-3410 •	1"	3/4"
RP-3415 •	1-1/2"	3/4"
RP-3420 •	2"	3/4"
RP-3425 •	2-1/2"	3/4"
RP-3430 •	3"	3/4"
RP-3440 •	4"	3/4"
RP-3460 •	6"	3/4"
RS-1010 •	1"	1"
RS-1030 •	3"	1-1/8"
RS-12520 •	2"	1-1/4"
RS-12530 •	3"	1-1/4"
RS-12560 •	6"	1-1/4"

PLASTER

Custom trim used to provide various widths feature reveals in ceiling, soffits, and walls. When vented, the reveal will act as an air vent and functions as a plaster screed.

DRYWALL



PART NUMBER	A	B
RD-1212 •	1/2"	1/2"
RD-1234 •	3/4"	1/2"
RD-1210 •	1"	1/2"
RD-1215 •	1-1/2"	1/2"
RD-1220 •	2"	1/2"
RD-1230 •	3"	1/2"
RD-1240 •	4"	1/2"
RD-5812 •	1/2"	5/8"
RD-5834 •	3/4"	5/8"
RD-5810 •	1"	5/8"
RD-5815 •	1-1/2"	5/8"
RD-5820 •	2"	5/8"
RD-5830 •	3"	5/8"
RD-5840 •	4"	5/8"

DRYWALL

Custom trim to be used as a feature reveal in vertical and horizontal drywall conditions.

*Appearance of part is different than detail above. See page 3 of the Shapes Catalog.

FINAL FORMS II

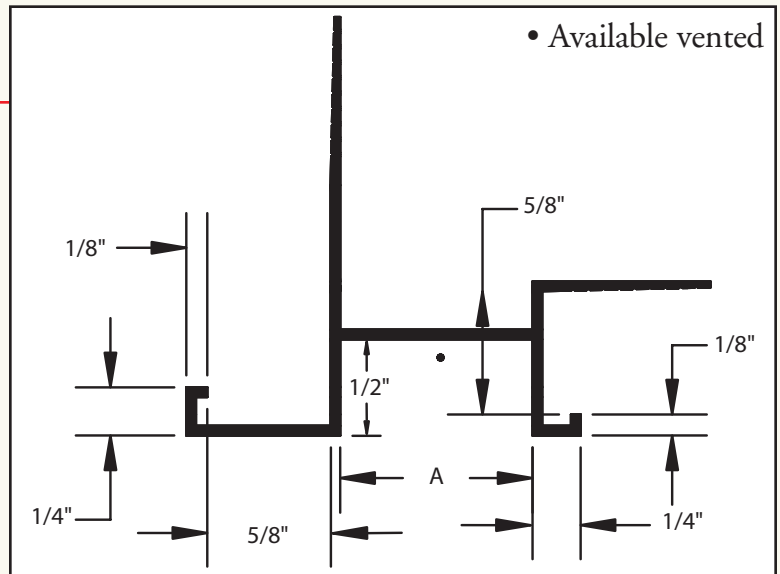
UNIQUE TRIMS AND SHAPES IN PREFINISHED ALUMINUM

GORDON
INCORPORATED

BUY ONLINE ▶

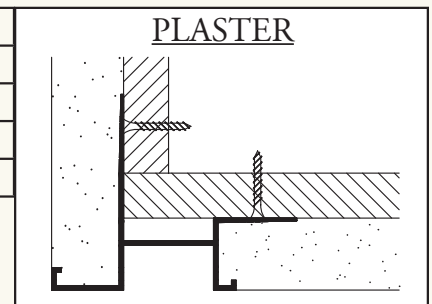
S REVEAL TRIMS

Trims are available in clear satin anodized or painted finishes.



PART NUMBER	A
SP-3434 •	3/4"
SP-3410 •	1"
SP-3420 •	2"
SP-3430 •	3"

Edge trim utilized as exterior drip trim . . . available with various width reveals . . . functions as a screed when used with plaster. When vented, the reveal will act as an air vent.



PART NUMBER	A
SD-5834 •	3/4"
SD-5810 •	1"
SD-5820 •	2"
SD-5830 •	3"

Edge trim utilized as interior fascia/soffit transition . . . creates a recess at soffit line.

