

WALL SYSTEMS

GORDON
INCORPORATED



UNIVERSITY OF TEXAS,
FOOTBALL LOCKER ROOM
Austin, TX



UNIVERSITY OF TEXAS,
FOOTBALL COMPLEX
Austin, TX

WALL SYSTEMS

WALL SYSTEMS

Gordon is an award winning manufacturer and provider of solutions for specialty interior finishes.

Gordon Wall Systems are designed and engineered for easy installation, high durability, and fabricated to your specific design requirements.



LITTLE CAESARS ARENA
Detroit, MI

METALS

Gordon offers many different metal options to meet your design criteria.

ALUMINUM - .063" - .188" thickness

- Smooth
- Textured / Embossed
- .063" MILLENNIUM®
- Mechanical finishes

GALVANIZED STEEL - 14 - 24 gauge

- Smooth
- 18 gauge MILLENNIUM®

MECHANICAL & TEXTURED STAINLESS STEEL - 14 - 24 gauge

- #4 Directional Brushed
- #6 Directional Brushed
- #8 Mirror
- Random Orbital
- Random Anti-Graffiti

Ceramatech™ - Durable Porcelain finish

- Scratch resistant
- White and Light Gray colors
- Extreme hardness - 8H

Contact us for other material types and thicknesses. Consider MILLENNIUM for backlighting applications.

FABRICATION

DESIGN APPLICATIONS

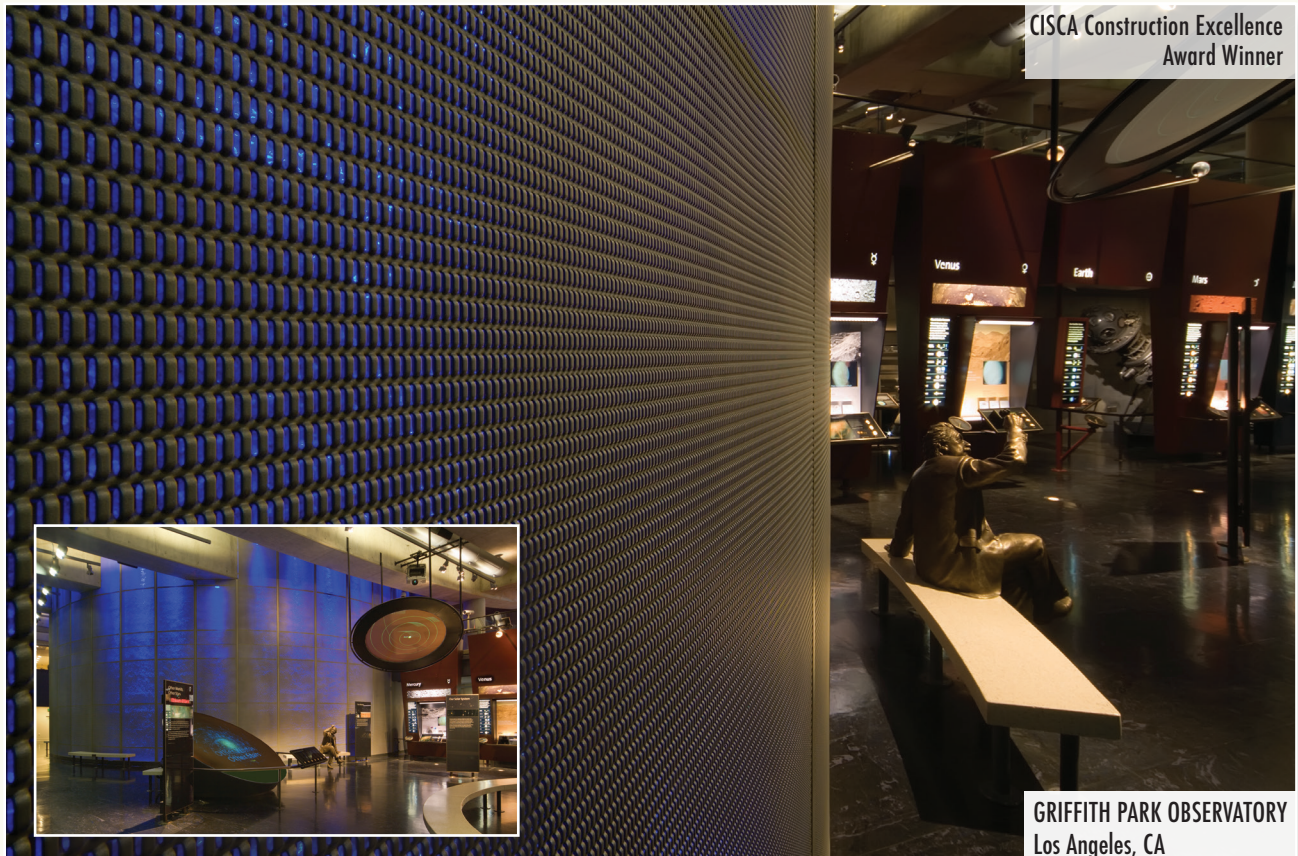
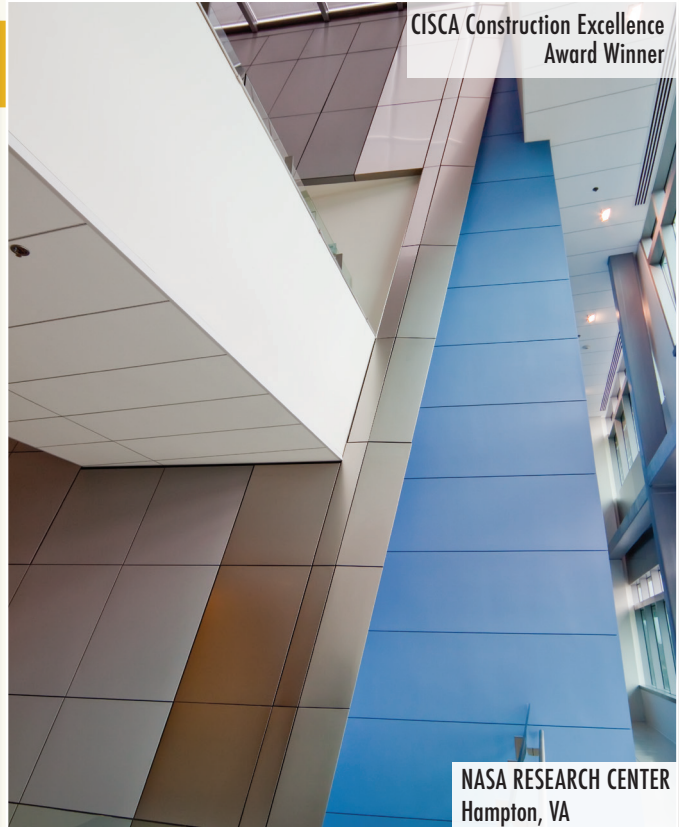
- Non-perforated
- Perforated for acoustics or decorative design
- Flat
- Corrugated
- Soft "V" joint
- Curved
- Reveal
- Double Reveal

PANEL SIZES - Up to 5' x 12'

Can be reinforced with: Corrugated metal, MDF, or Honeycomb backer panels for increased rigidity



GRAND CENTRAL TERMINAL
New York, NY



WALL SYSTEMS



WALGREEN'S BUCKTOWN
Chicago, IL

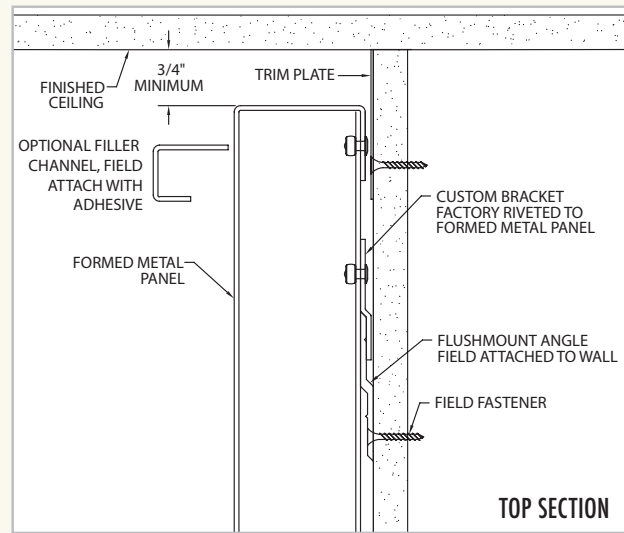
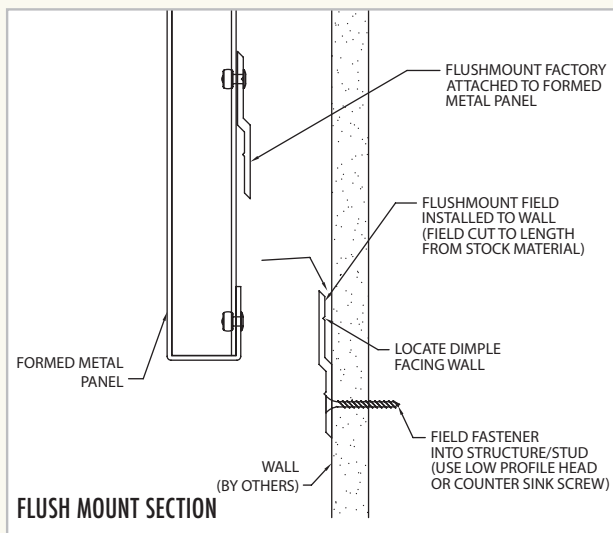
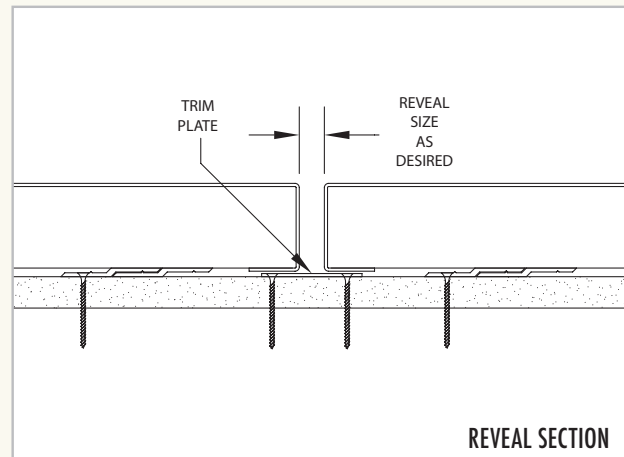
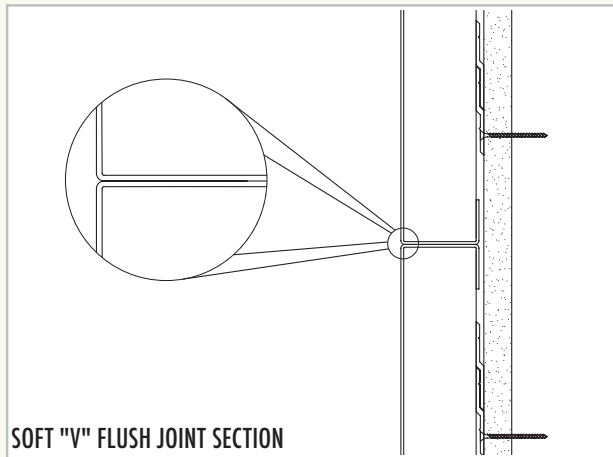


GRAND CENTRAL TERMINAL, TRACK 13
New York, NY

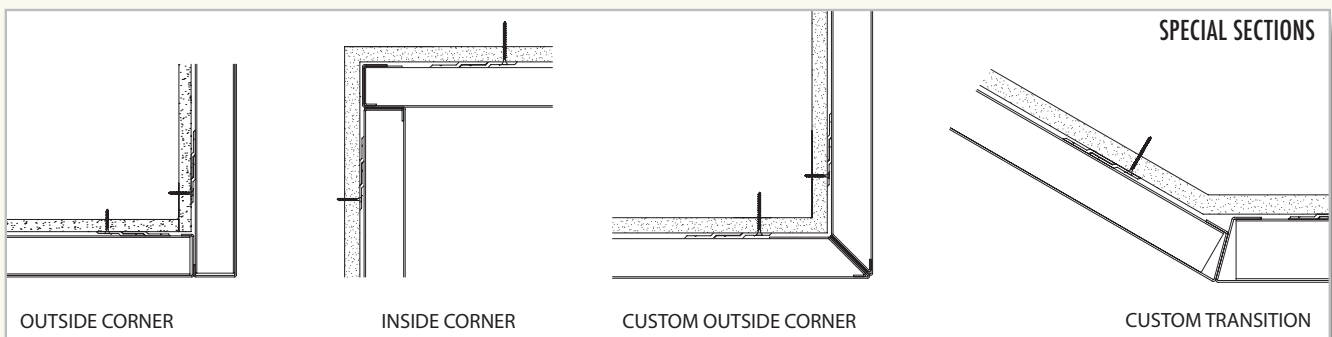


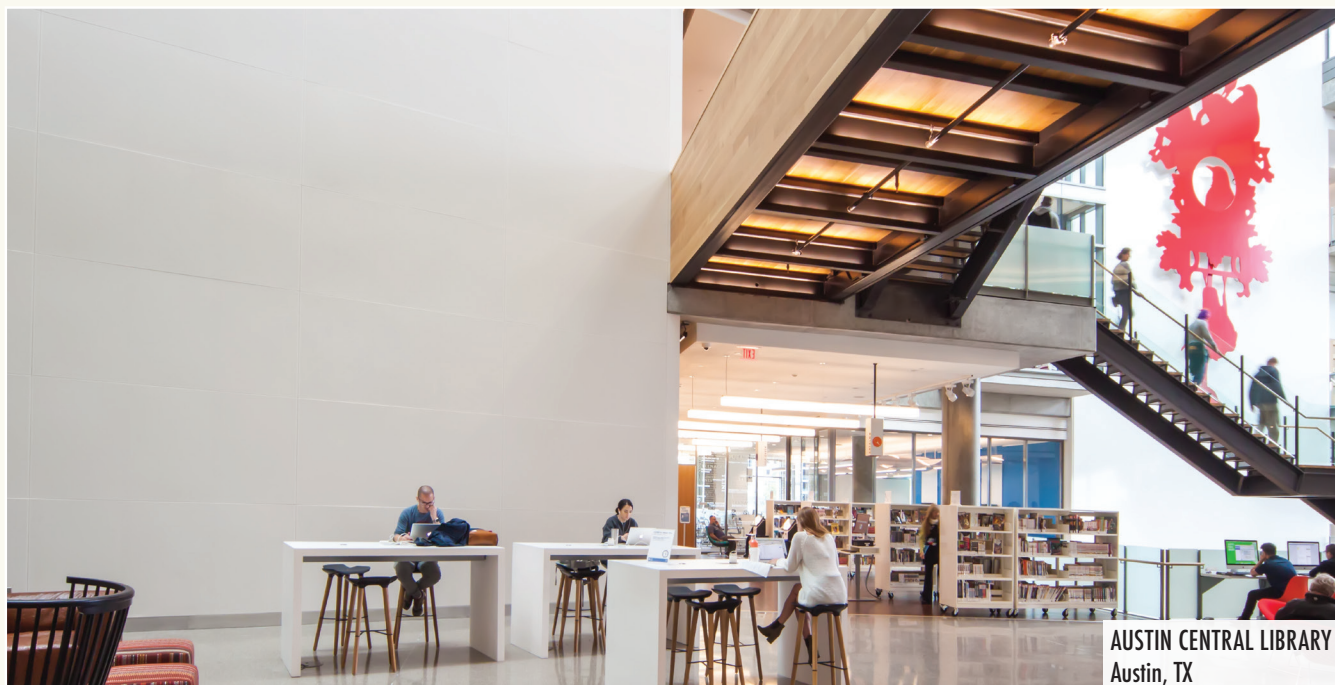
WALL SYSTEMS

DETAILS



DETAILS





AUSTIN CENTRAL LIBRARY
Austin, TX

FINISHES

- Powder Coat - Durable Painted Finishes
 - Standard Finishes
 - ACROGUARD® Enhanced Durability Finishes
 - ACROGUARD® Patinaed Finishes
 - ACROGUARD®-UVX
 - ACROSTAT™ Antimicrobial
 - Metallic
- GreenWood™ Wooden Finishes
 - Wood Grain Films
 - Wood Grain Paints
 - Polyester
 - PVDF
- Ceramatech™ Durable Porcelain finish
- PROCLAIM™ - Expressive Laminate Imagery
- PVDF
 - 50% Resin Based Coatings
 - 70% High Performance Resin Based Coatings
- Mechanical & Textured Stainless Steel

GREEN BY DESIGN

- Products contribute to LEED®¹ certification
- Aluminum Coil - 28% recycled
 - 22% pre-consumer content
 - 6% post-consumer content
- Steel Coil - 66.1% recycled
 - 11.2% pre-consumer content
 - 54.8% post-consumer content
- In-House Finishes
 - Biodegradable pre-treatment (No phosphates) powder coat
 - No hazardous waste
 - No VOCs
 - No heavy metals
- Reference our sustainable products brochure and website for more information. Recycled content values are subject to change. Contact us for accurate values or job specific requirements.

GORDON®
INCORPORATED

5023 HAZEL JONES ROAD, BOSSIER CITY, LA 71111
800.747.8954
800.877.8746 FAX
SALES@GORDON-INC.COM
GORDON-INC.COM
AN EMPLOYEE OWNED COMPANY

¹ LEED is a registered trademark of the U.S. Green Building Council.

